

Excellent Integrated System Limited

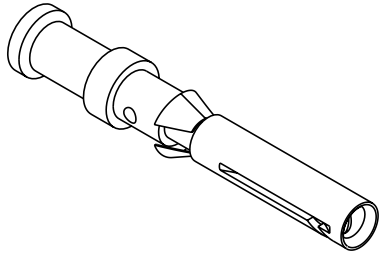
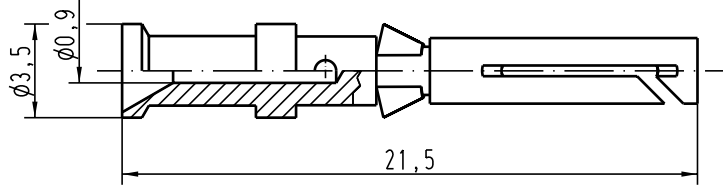
Stocking Distributor

Click to view price, real time Inventory, Delivery & Lifecycle Information:



[Harting](#)
[09150006404](#)

For any questions, you can email us directly:
sales@integrated-circuit.com

Alle Rechte vorbehalten/ All rights reserved



Leiterquerschnitt/ wire gauge: 0,14-0,37mm² / AWG 26-22
 Oberfläche/ surface: Gold Tec (NiP+Au)

 All Dimensions in mm Original Size DIN A 4			Techn. Character.			Nicht tolerierte Masse/ free size tolerances			
				Dat.	Name	Massstab/Scale 5:1	Kontaktbuchse-c <i>crimp contact</i>		
			Detail.	14.05.04	Loe.				
			Insp.		KR				
			Stand.						
411022			HARTING Electric GmbH & Co. KG D-32339 Espelkamp				TB 09 15 000 6404		Blatt/ page
Mod.	Dat.	Name					Sub.		