

## Excellent Integrated System Limited

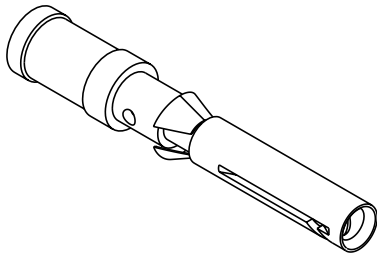
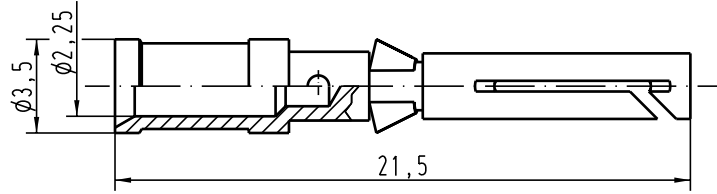
Stocking Distributor

Click to view price, real time Inventory, Delivery & Lifecycle Information:



[Harting](#)  
[09150006406](#)

For any questions, you can email us directly:  
[sales@integrated-circuit.com](mailto:sales@integrated-circuit.com)

Alle Rechte vorbehalten/ All rights reserved



Leiterquerschnitt/ wire gauge: 2,5mm<sup>2</sup> / AWG 14  
Oberfläche/ surface: Gold Tec (NiP+Au)

 All Dimensions in mm Original Size DIN A 4			Techn. Character.			Nicht tolerierte Masse/ free size tolerances			
				Dat.	Name	Massstab/Scale  <b>5:1</b>	<b>Kontaktbuchse-c</b> <i>crimp-contact</i>		
			Detail.	14.05.04	Loe.				
			Insp.		KR				
			Stand.						
411022			HARTING Electric GmbH & Co. KG D-32339 Espelkamp				<b>TB 09 15 000 6406</b>		Blatt/ page
Mod.	Dat.	Name					Sub.		