

Excellent Integrated System Limited

Stocking Distributor

Click to view price, real time Inventory, Delivery & Lifecycle Information:

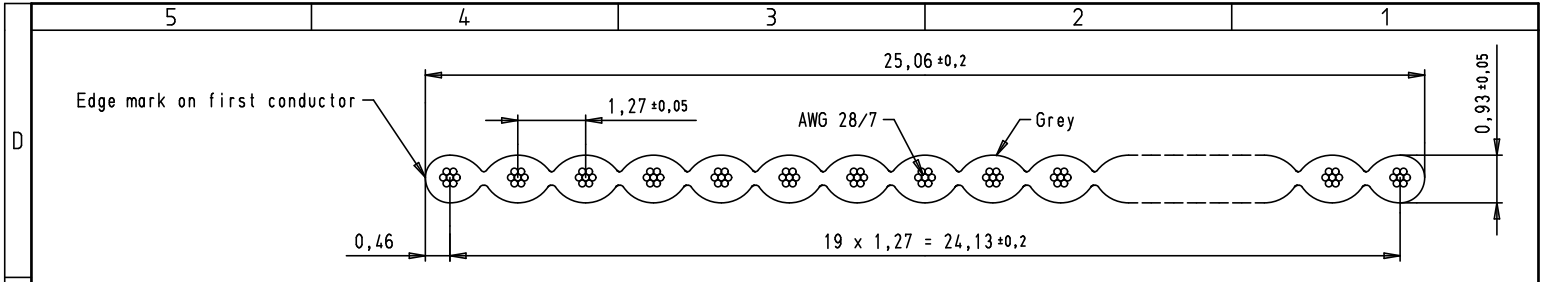
[Harting](#)

[09180207001](#)

For any questions, you can email us directly:



sales@integrated-circuit.com

Alle Rechte vorbehalten/ All rights reserved



D	
C	<p>Wire _____ Tinned copper</p> <p>Gauge _____ AWG 28/7 0,089 mm²</p> <p>Voltage rating _____ 300 Vr.m.s</p> <p>Current rating _____ 2,1A at 25°C</p> <p>Capacity unbalanced _____ 45,9 pF/m at 1 MHz</p> <p>Impedance unbalanced _____ 105 Ω</p> <p>Propagation delay _____ 4,9 ns/m nominal</p> <p>Insulation material _____ PVC</p> <p>Temperature rating _____ -20°C (operating) _____ -30°C (static) to +105°C</p> <p>Flammability rating _____ Flame retardant VW1</p> <p>Insulation resistance _____ 100 MΩ/km</p> <p>Approval _____ UL AWM style 2651</p>
B	
A	

09 18 020 7004	100 m (328 feet)
09 18 020 7001	30,48 m (100 feet)
Part number	Length per reel

				Det.	Name	 All Dim. in mm Orig. Size DIN A 4	SEK 18 flat cable 20 poles	Maßstab/ Scale 10:1
			Detail.	20/10/05	JMDR			
EC01360	19/02/10	SC	Insp.					
34400	17/09/07	PK	Stand.				TB 09 18 020 700X	Blatt/ Page 1 / 1
33246	20/10/05	JMDR						
				HARTING EURL F-95972 Paris				
				Mod.	Det.	Name	Sub.	