

Excellent Integrated System Limited

Stocking Distributor

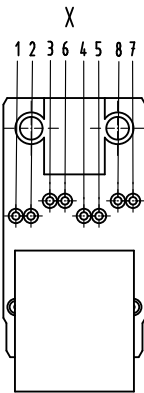
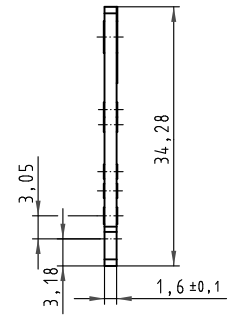
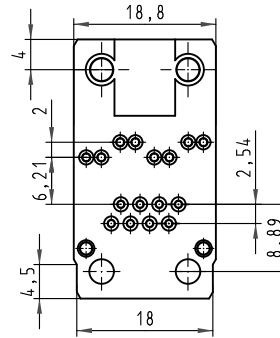
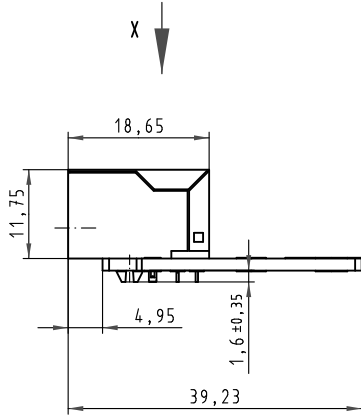
Click to view price, real time Inventory, Delivery & Lifecycle Information:

[Harting](#)
[09455451134](#)

For any questions, you can email us directly:
sales@integrated-circuit.com

Alle Rechte vorbehalten. All rights reserved.

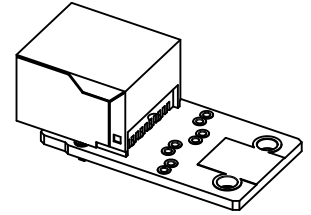
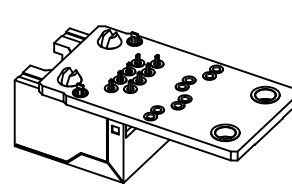
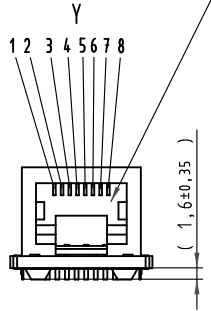
PCB dimensions



Loading-Plan

- 1 ————— 1
- 2 ————— 2
- 3 ————— 3
- 4 ————— 4
- 5 ————— 5
- 6 ————— 6
- 7 ————— 7
- 8 ————— 8

Mating face RJ45 according to IEC 60603-7



RJI PCB with RJ 45 Jack	09 45 545 1134
Description	Part-No.

All Dimensions in mm Original Size DIN A 3	Techn. Character.			Nicht tolerierte Maß/Free size tolerances	
	Bel.	Name	Maßstab/Scale	RJI PCB with RJ 45 Jack TB 09 45 545 1134	
	Detail: 13.03.07 MS		2:1		
Insp.					
Stand.					
34070	HARTING Electronics GmbH & Co. KG			TB 09 45 545 1134	Blatt/page Sub.
Mod.	Dat.	Name	D-32339 ESPELKAMP		