

Excellent Integrated System Limited

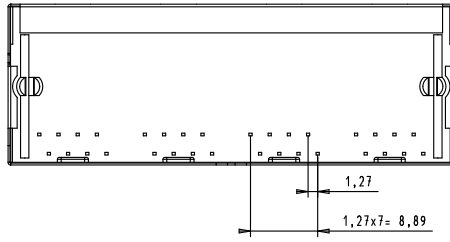
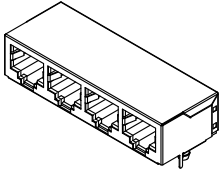
Stocking Distributor

Click to view price, real time Inventory, Delivery & Lifecycle Information:

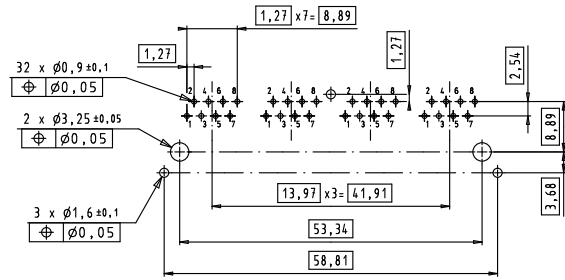
[Harting](#)
[09455511124](#)

For any questions, you can email us directly:
sales@integrated-circuit.com

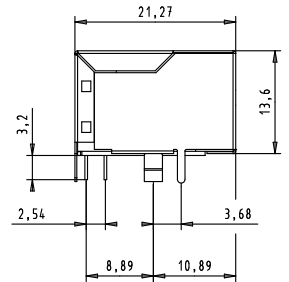
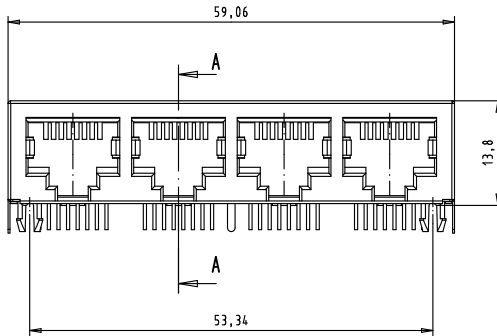
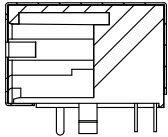
Alle Rechte vorbehalten. All rights reserved.



PCB layout, component side
PCB thickness up to 2,4mm



A-A



Material:
Shielding: brass plating nickel alloy
Insert: Thermoplastic, UL-94-V0, black
Contact: -Phosphor Bronze, selective gold plating
 -15µ" over nickel in contact area
 -Tin plating over nickel in solder area

All Dimensions in mm Original Size DIN A 3			Techn. Character.			Nicht tolerierte Maß/Free size tolerances			
Mod.	Dat.	Name	Dat.	Name	Maßstab/Scale	HARTING RJ Industrial® 4-ports modular RJ 45 Jack with 4x8 signal solder pins and 3 grounding solder pins			
			Detail: 09/DEC/11	BH	2:1			TB 09 45 551 1124	
			Insp.: 09/DEC/11	JB					
			Stand.						
36299	20/04/12	SD	HARTING EURL F-95972 Paris			Sub.			
EC03766									