



Distributor of Harting: Excellent Integrated System Limited

Datasheet of 09641147230 - D-Sub Connector Receptacle, Female Sockets 9 Position
Through Hole, Right Angle Solder

Contact us: sales@integrated-circuit.com Website: www.integrated-circuit.com

Excellent Integrated System Limited

Stocking Distributor

Click to view price, real time Inventory, Delivery & Lifecycle Information:

[Harting](#)

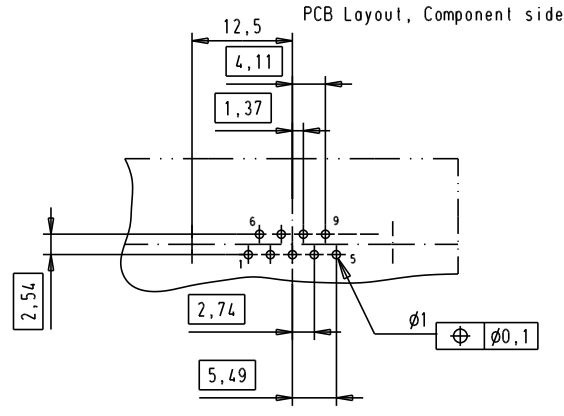
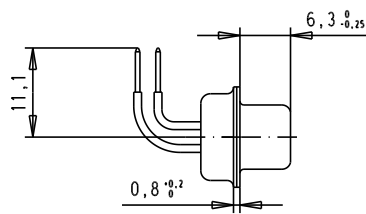
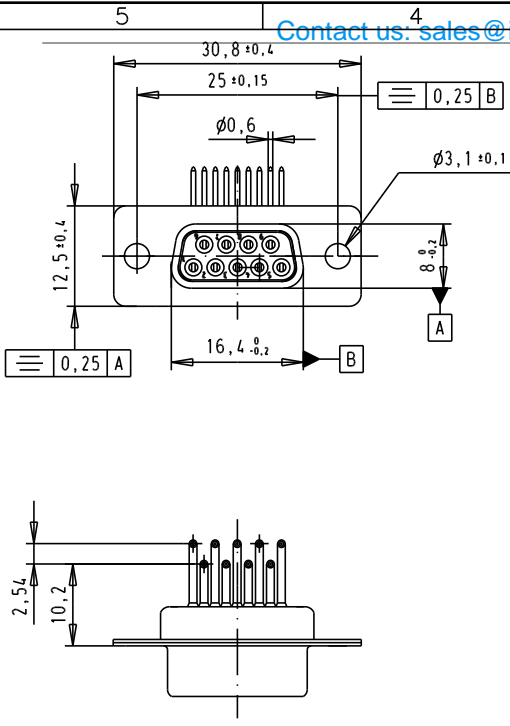
[09641147230](#)

For any questions, you can email us directly:

sales@integrated-circuit.com

Contact us: sales@integrated-circuit.com Website: www.integrated-circuit.com

D
C
B
A



SPECIFICATION

Mating Cycles	500
Filter type	C
Capacitance	1000pf±20%
Working Voltage	100V
Current Rating	7.5A
Insulation Resistance	>16Ω

Minimum Insertion Loss

FREQUENCY (MHz)	ATTENUATION dB
5	1dB
10	3dB
50	12dB
100	20dB
500	34dB
1000	30dB

				Det.	Name	 All Dim. in mm Orig. Size DIN A 4	D-Sub, female, angled, 9 Poles, with turned solder pin, and hole	Mo?No?lab/ Scale 1.5:1
			Detail.	8-Jul-02	CV			
			Insp.					
32114	08/12/03	AF	Stand.			 Sub.	TB 09641147230	Blatt / Page 1 / 1
31576	08/12/03	AF						
31058	8-Jul-02	CV						
	Mod.	Det.	Name	HARTING EURL F-95972 Paris				