



Distributor of Harting: Excellent Integrated System Limited

Datasheet of 09641147242 - D-Sub Connector Receptacle, Female Sockets 9 Position
Through Hole, Right Angle Solder

Contact us: sales@integrated-circuit.com Website: www.integrated-circuit.com

Excellent Integrated System Limited

Stocking Distributor

Click to view price, real time Inventory, Delivery & Lifecycle Information:

[Harting](#)

[09641147242](#)

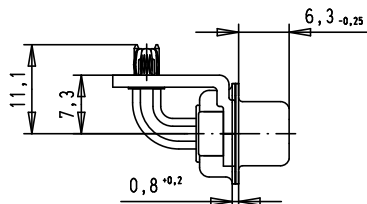
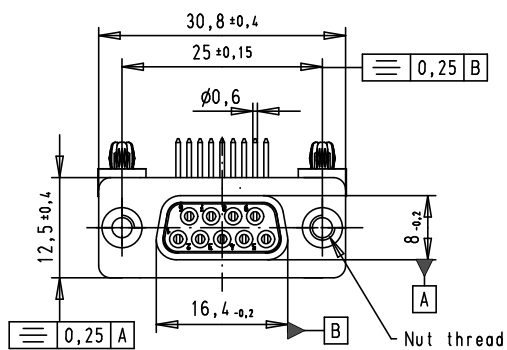
For any questions, you can email us directly:

sales@integrated-circuit.com

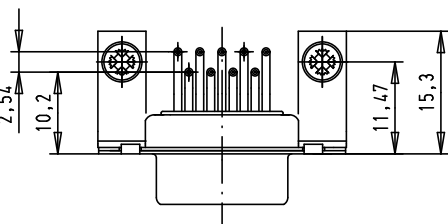
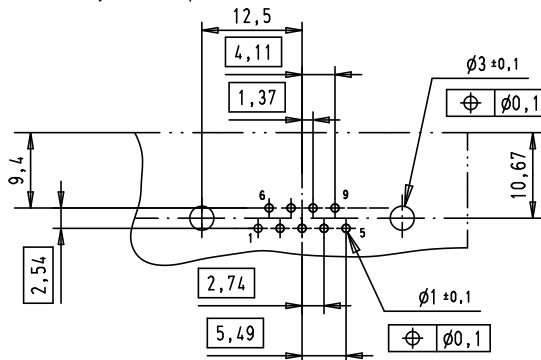
SPECIFICATION

Performance level	PL2
Filter type	C
Capacitance	3900pf±20%
Working Voltage	100v
Current Rating	7.5A
Insulation Resistance	>1GΩ

FREQUENCY (MHz)	ATTENUATION (dB)
5	6dB
10	11dB
50	25dB
100	35dB
500	35dB
1000	32dB



PCB Layout, Component side, thickness 1.6 mm



					Det.	Name	 All Dim. in mm Orig. Size DIN A 4	D-Sub, female, angled, 9 Poles, solder pins, board-locks and clinch nuts	M3/MS tab/ Scale 1.5:1	
					Detail.	8-JUL-02				CV
					Insp.	12/01/12				JB
					Stand.					
09641147243	M3	36283	12/01/12	SD	HARTING EURL F-95972 Paris				TB 0964114724x	Blatt/ Page 1 / 4
09641147242	UNC 4-40	33231	07/10/05	JMDR						
09641147242	UNC 4-40	31058	8-JUL-02	CV						
Part number	Nut thread	Mod.	Det.	Name	Sub.					