



Distributor of Harting: Excellent Integrated System Limited

Datasheet of 09652226803 - D-Sub Connector Plug, Male Pins 15 Position Through Hole Solder

Contact us: sales@integrated-circuit.com Website: www.integrated-circuit.com

Excellent Integrated System Limited

Stocking Distributor

Click to view price, real time Inventory, Delivery & Lifecycle Information:

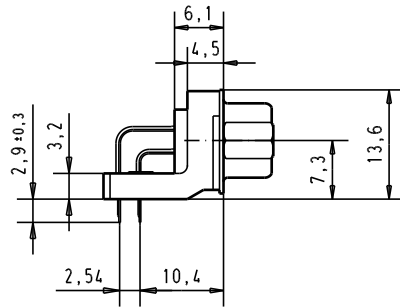
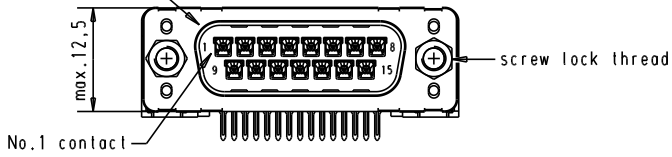
[Harting](#)

[09652226803](#)

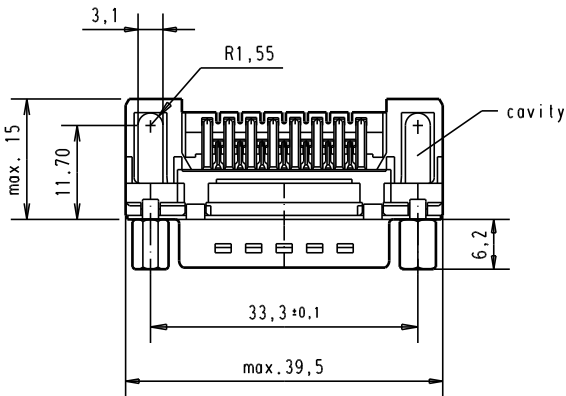
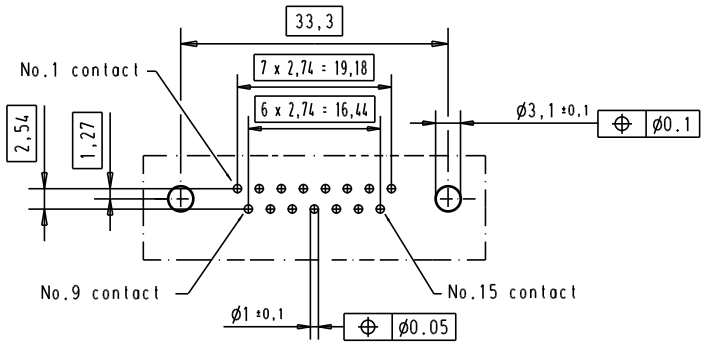
For any questions, you can email us directly:

sales@integrated-circuit.com

Mating face according to : MIL-C-24308 / DIN 41652 / CECC 75301-802



Printed board layout component side



						Del.	Name		D-Sub, male, standard angle 15 poles, with solder pin, screw lock and hole	Maßstab/ Scale 1.5:1
						Detail.	ALSPACE			
A						11/dec/00		All Dim. in mm Orig. Size DIN A 4		
	09 65 222 3803	4-40 UNC	1	29773	18-APR-02	CV				
	09 65 222 6803	4-40 UNC	2	29689	02/07/01	AA				
	09 65 222 7803	4-40 UNC	3	27960	11/dec/00	ALSPACE				
	Part number	Screw lock thread	Performance level	Mod.	Del.	Name	HARTING EURL F-95972 Paris			TB 0965222x80x Sub.