



**Distributor of Harting: Excellent Integrated System Limited**

Datasheet of 09653216703 - D-Sub Connector Plug, Male Pins 25 Position Through Hole Solder

Contact us: [sales@integrated-circuit.com](mailto:sales@integrated-circuit.com) Website: [www.integrated-circuit.com](http://www.integrated-circuit.com)

---

## **Excellent Integrated System Limited**

Stocking Distributor

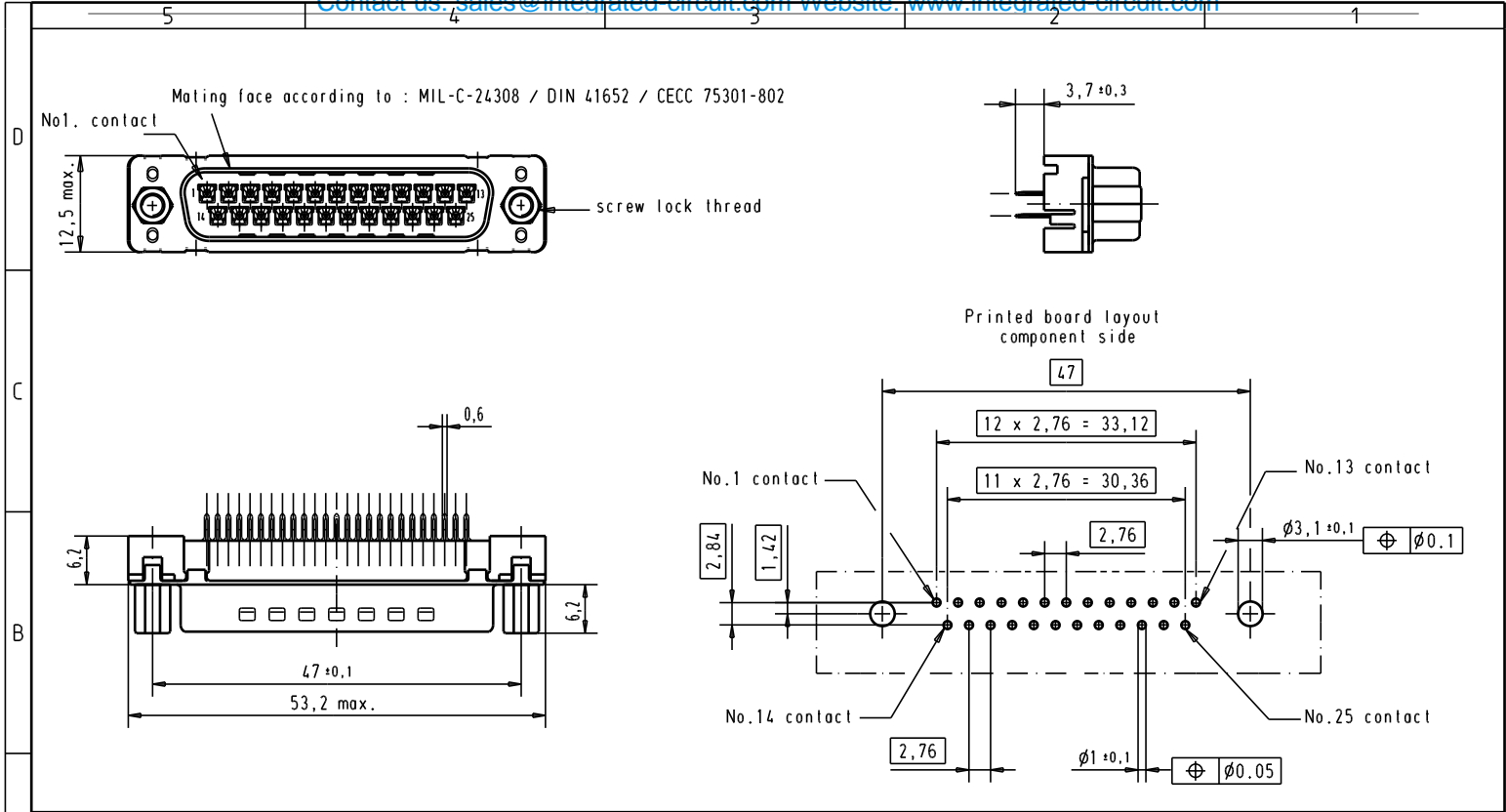
Click to view price, real time Inventory, Delivery & Lifecycle Information:

[Harting](#)

[09653216703](#)

For any questions, you can email us directly:

[sales@integrated-circuit.com](mailto:sales@integrated-circuit.com)



|                |                   |                   |       |          |      |               |          |  |   |                            |    |
|----------------|-------------------|-------------------|-------|----------|------|---------------|----------|--|---|----------------------------|----|
|                |                   |                   |       |          |      | Det.          | Name     | <br>All Dim. in mm<br>Orig. Size DIN A 4 | D-Sub, 25 poles,<br>male, straight,<br>with solder pins 3.7<br>and screw locks. | Maßstab/<br>Scale<br>1.5:1 |    |
|                |                   |                   |       |          |      | Detail.       | 05/03/02 |  |   |                            | CV |
|                |                   |                   |       |          |      | Insp.         |          |  |   |                            |    |
| 09 65 321 3703 | 4-40 UNC          | 1                 |       |          |      | Stand.        |          |  |   |                            |    |
| 09 65 321 6703 | 4-40 UNC          | 2                 | 31892 | 22/04/04 | JH   | HARTING EURL  |          | <b>TB 09 65 321 x70x</b>                 | Blatt/ Page<br>3  |                            |    |
| 09 65 321 7703 | 4-40 UNC          | 3                 | 29723 | 05/03/02 | CV   | F-95972 Paris |          |  |   |                            |    |
| Part number    | Screw lock thread | Performance level | Mod.  | Det.     | Name |               |          | Sub.                                     |   |                            |    |