

Excellent Integrated System Limited

Stocking Distributor

Click to view price, real time Inventory, Delivery & Lifecycle Information:

[BUD Industries, Inc.](#)
[NHC-14151](#)

For any questions, you can email us directly:

sales@integrated-circuit.com



Distributor of BUD Industries, Inc.: Excellent Integrated System Limited

Datasheet of NHC-14151 - VALULINE 8" X 17" X 1.75"

Contact us: sales@integrated-circuit.com Website: www.integrated-circuit.com

PART NAME

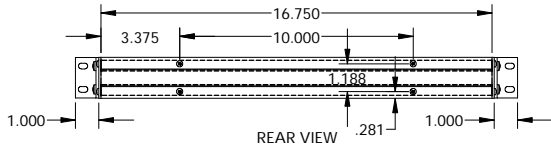
VALU/LINE SERIES CABINET

PART No.

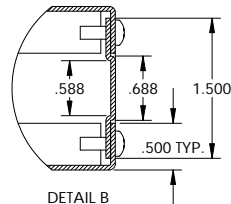
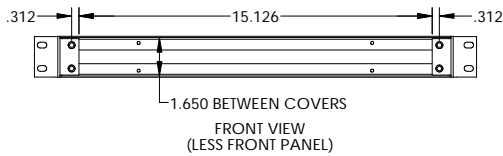
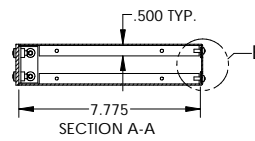
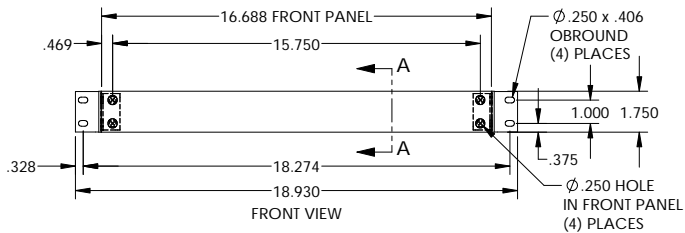
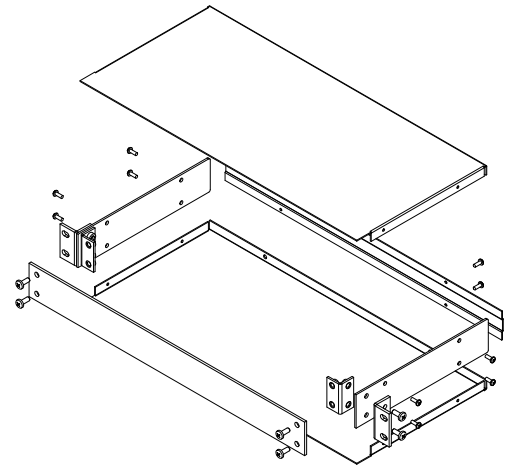
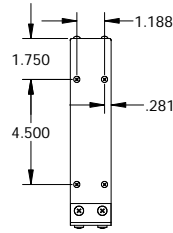
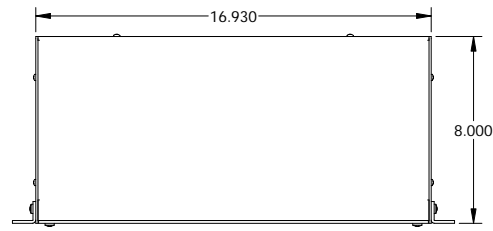
NHC-14151

REVISION DATE

11-1-07



UNIT SHIPPED UNASSEMBLED.
 OUTER BRACKETS FOR MOUNTING IN STANDARD 19" WIDE CABINETS.
 OPTIONAL SELF-ADHESIVE RUBBER FEET (SUPPLIED)
 LOAD RATING: 25 LBS. MAX.



MATERIAL:
 BACK & COVERS 0.050 THICK ALUMINUM
 SIDES & INNER BRACKETS 0.090 THICK ALUMINUM
 FRONT PANEL 0.125 THICK ALUMINUM
 OUTER BRACKETS 11 GA. C.R.S.

FINISH:
 BACK & COVERS PREPAINTED SMOOTH WHITE
 SIDES & OUTER BRACKETS WHITE TEXTURED
 FRONT PANEL NATURAL (OUTSIDE SURFACE TAPED WITH PVC)
 INNER BRACKETS NATURAL
 FEET BLACK