

## Excellent Integrated System Limited

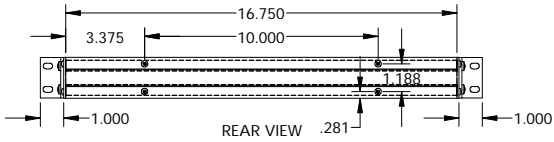
Stocking Distributor

Click to view price, real time Inventory, Delivery & Lifecycle Information:

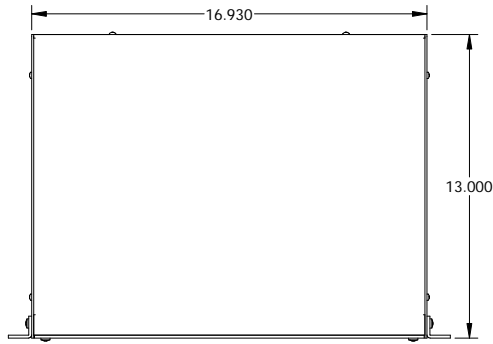
[BUD Industries, Inc.](#)  
[NHC-14152](#)

For any questions, you can email us directly:

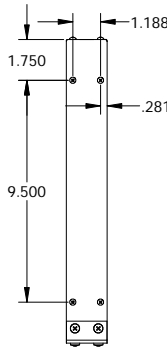
[sales@integrated-circuit.com](mailto:sales@integrated-circuit.com)



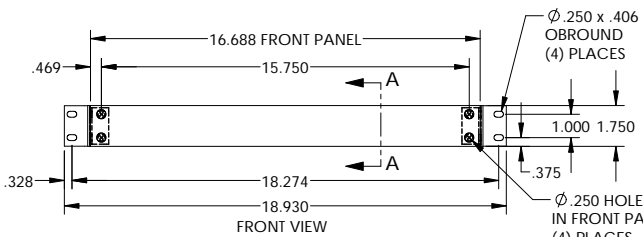
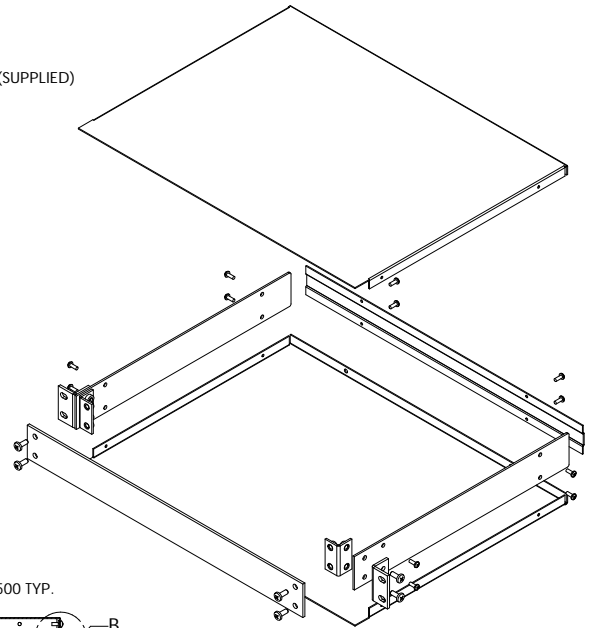
UNIT SHIPPED UNASSEMBLED.  
 OUTER BRACKETS FOR MOUNTING IN STANDARD 19" WIDE CABINETS.  
 OPTIONAL SELF-ADHESIVE RUBBER FEET (SUPPLIED)  
 LOAD RATING: 25 LBS. MAX.



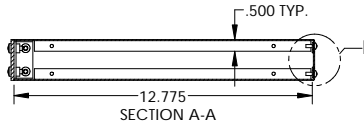
TOP VIEW



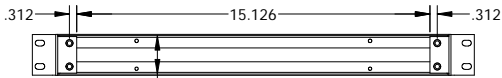
SIDE VIEW



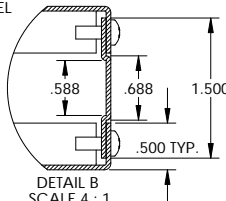
FRONT VIEW



SECTION A-A



FRONT VIEW (LESS FRONT PANEL)



DETAIL B SCALE 4:1

MATERIAL:  
 BACK & COVERS 0.050 THICK ALUMINUM  
 SIDES & INNER BRACKETS 0.090 THICK ALUMINUM  
 FRONT PANEL 0.125 THICK ALUMINUM  
 OUTER BRACKETS 11 GA. C.R.S.

FINISH:  
 BACK & COVERS PREPAINTED SMOOTH WHITE  
 SIDES & OUTER BRACKETS WHITE TEXTURED  
 FRONT PANEL NATURAL (OUTSIDE SURFACE TAPED WITH PVC)  
 INNER BRACKETS NATURAL  
 FEET BLACK