

## Excellent Integrated System Limited

Stocking Distributor

Click to view price, real time Inventory, Delivery & Lifecycle Information:

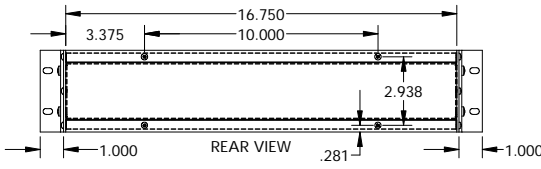
[BUD Industries, Inc.](#)

[NHC-14155](#)

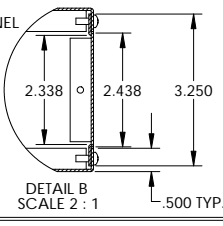
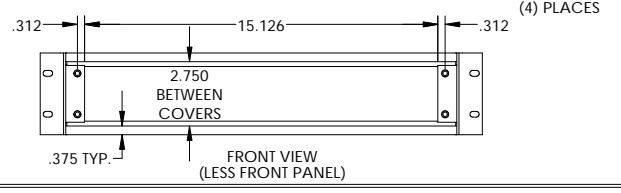
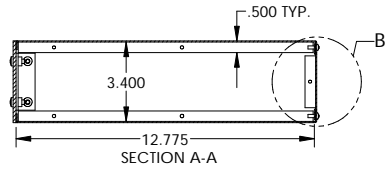
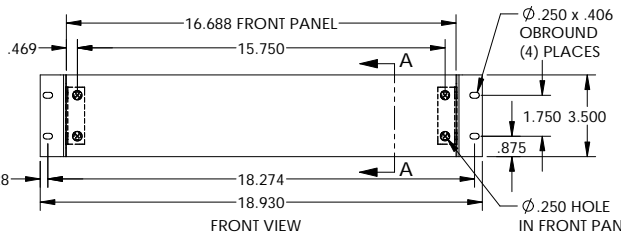
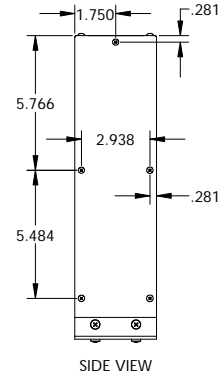
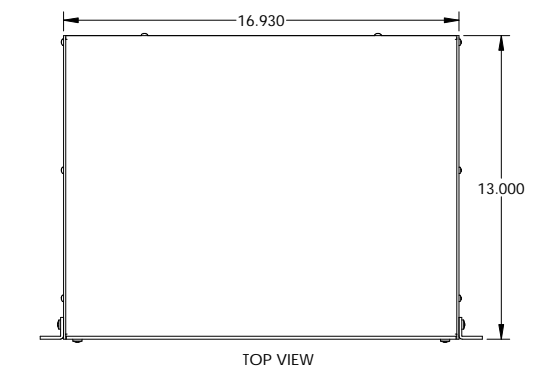
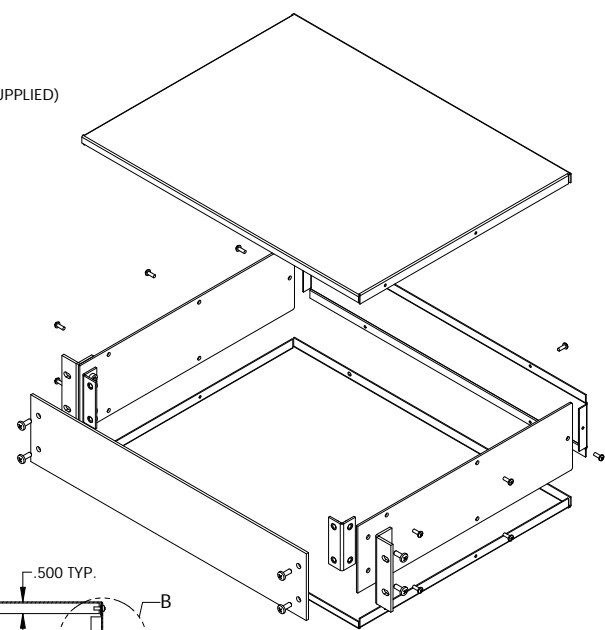
For any questions, you can email us directly:

[sales@integrated-circuit.com](mailto:sales@integrated-circuit.com)

PART NAME	VALU/LINE SERIES CABINET	PART No.	NHC-14155	REVISION DATE	11-1-07
-----------	--------------------------	----------	-----------	---------------	---------



UNIT SHIPPED UNASSEMBLED.  
 OUTER BRACKETS FOR MOUNTING IN STANDARD 19" WIDE CABINETS.  
 OPTIONAL SELF-ADHESIVE RUBBER FEET (SUPPLIED)  
 LOAD RATING: 25 LBS. MAX.



MATERIAL:  
 BACK & COVERS 0.050 THICK ALUMINUM  
 SIDES & INNER BRACKETS 0.090 THICK ALUMINUM  
 FRONT PANEL 0.125 THICK ALUMINUM  
 OUTER BRACKETS 11 GA. C.R.S.

FINISH:  
 BACK & COVERS PREPAINTED SMOOTH WHITE  
 SIDES & OUTER BRACKETS WHITE TEXTURED  
 FRONT PANEL NATURAL (OUTSIDE SURFACE TAPED WITH PVC)  
 INNER BRACKETS NATURAL  
 FEET BLACK