

Excellent Integrated System Limited

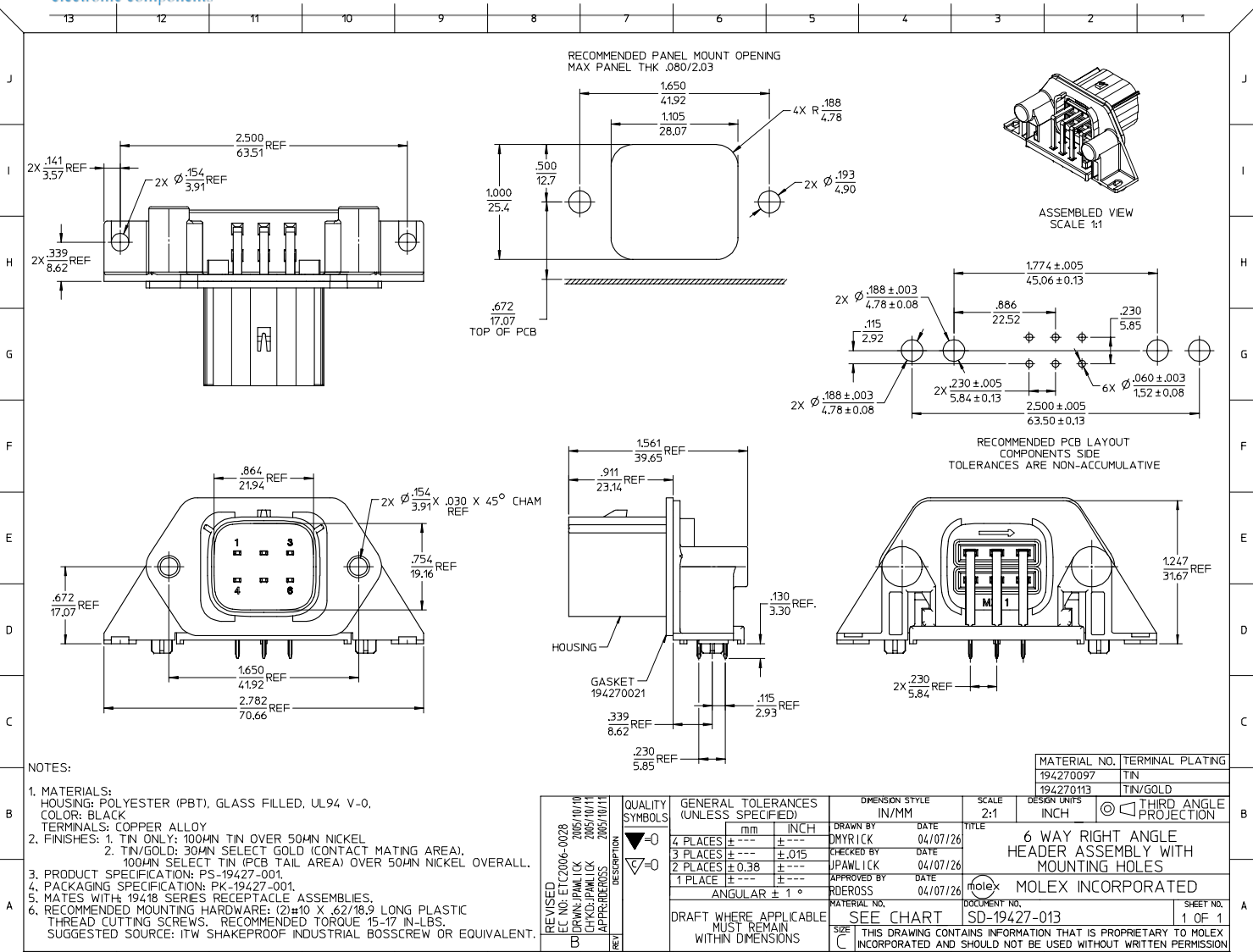
Stocking Distributor

Click to view price, real time Inventory, Delivery & Lifecycle Information:

[Molex Connector Corporation](#)
[0194270113](#)

For any questions, you can email us directly:

sales@integrated-circuit.com



NOTES:

1. MATERIALS:
HOUSING: POLYESTER (PBT), GLASS FILLED, UL94 V-0,
COLOR: BLACK
TERMINAL: COPPER ALLOY
2. FINISHES: 1. TIN ONLY: 100µN TIN OVER 50µN NICKEL
2. TIN/GOLD: 30µN SELECT GOLD (CONTACT MATING AREA),
100µN SELECT TIN (PCB TAIL AREA) OVER 50µN NICKEL OVERALL.
3. PRODUCT SPECIFICATION: PS-19427-001.
4. PACKAGING SPECIFICATION: PK-19427-001.
5. MATES WITH 19416 SERIES RECEPTACLE ASSEMBLIES.
6. RECOMMENDED MOUNTING HARDWARE: (2) #10 X .62/18.9 LONG PLASTIC
THREAD CUTTING SCREWS. RECOMMENDED TORQUE 15-17 IN-LBS.
SUGGESTED SOURCE: ITW SHAKEPROOF INDUSTRIAL BOSSCREW OR EQUIVALENT.

REVISED IEC NO: ETC2006-0028 2005/10/10 DRAWN: JPAWLICK 2005/10/11 CHECKED: JPAWLICK 2005/10/11 APPROVED: RDEROSS 2005/10/11 DESCRIPTION 6 WAY RIGHT ANGLE HEADER ASSEMBLY WITH MOUNTING HOLES	QUALITY SYMBOLS ▽=0 ▽=0	GENERAL TOLERANCES (UNLESS SPECIFIED)		DIMENSION STYLE IN/MM		SCALE 2:1	DESIGN UNITS INCH	THIRD ANGLE PROJECTION
		4 PLACES ± .015 ± .015 3 PLACES ± .015 ± .015 2 PLACES ± .038 ± .038 1 PLACE ± .038 ± .038 ANGULAR ± 1°	mm INCH	DRAWN BY DMYRICK 04/07/26 CHECKED BY JPAWLICK 04/07/26 APPROVED BY RDEROSS 04/07/26	DATE 04/07/26 DATE 04/07/26 DATE 04/07/26	TITLE 6 WAY RIGHT ANGLE HEADER ASSEMBLY WITH MOUNTING HOLES		MATERIAL NO. 194270097
DRAFT WHERE APPLICABLE MUST REMAIN WITHIN DIMENSIONS		MATERIAL NO. SEE CHART	DOCUMENT NO. SD-19427-013	MOLEX INCORPORATED		SHEET NO. 1 OF 1	THIS DRAWING CONTAINS INFORMATION THAT IS PROPRIETARY TO MOLEX INCORPORATED AND SHOULD NOT BE USED WITHOUT WRITTEN PERMISSION	