

## Excellent Integrated System Limited

Stocking Distributor

Click to view price, real time Inventory, Delivery & Lifecycle Information:

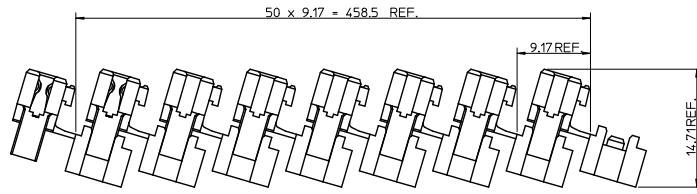
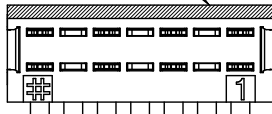
[Molex Connector Corporation](#)  
[0908720023](#)

For any questions, you can email us directly:

[sales@integrated-circuit.com](mailto:sales@integrated-circuit.com)

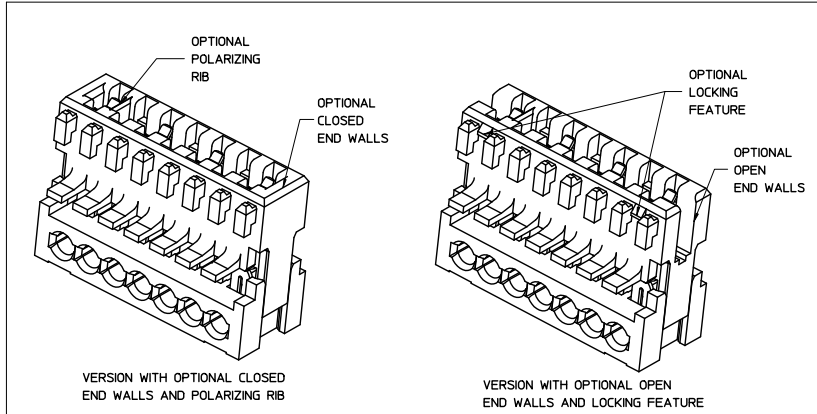
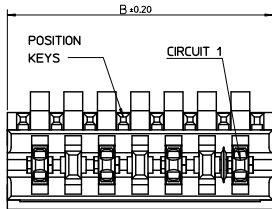
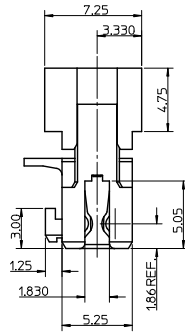
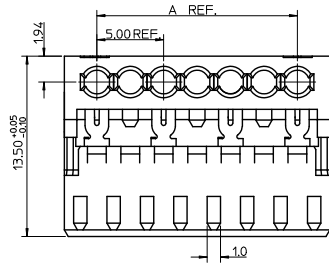
13 12 11 10 9 8 7 6 5 4 3 2 1

POSITION OF COLOUR STRIPE



CCT	'A'	'B'
2	5.0	9.875
3	10.0	14.875
4	15.0	19.875
5	20.0	24.875
6	25.0	29.875
7	30.0	34.875
8	35.0	39.875
9	40.0	44.875
10	45.0	49.875

SHIPPING ARRANGEMENT  
SCALE 3:1



SEE SUBSEQUENT SHEETS FOR RELEVANT PART NUMBERS.

NOTES:

- REFER TO PRODUCT SPECIFICATION: PS-99020-0040.
- MATERIAL: HOUSING - POLYESTER (PBT) 10% GLASS FILLED, UL94-V0, COLOUR: NATURAL (BEIGE).  
TERMINAL: PHOSPHOR BRONZE 0.30 REF. THICK - PLATING HOT TIN DIP.
- REFER TO APPLICATION SPEC (AS-99033-0008)
- REFER TO PACKAGING SPEC (PK-90871-001)

ADDED NEW P/N'S EC NO: E2010-0367 DRAWN BY: M MAGUIRE 2010/04/28 CHECKED BY: CHICK WHITE 1999/05/04 APPROVED BY: M MAGUIRE 2010/05/28 REV:	QUALITY SYMBOLS	GENERAL TOLERANCES (UNLESS SPECIFIED)	DIMENSION STYLE	SCALE	DESIGN UNITS	THIRD ANGLE PROJECTION															
	▽=0 ▽=0	<table border="1"> <thead> <tr> <th></th> <th>mm</th> <th>INCH</th> </tr> </thead> <tbody> <tr> <td>4 PLACES</td> <td>±---</td> <td>±---</td> </tr> <tr> <td>3 PLACES</td> <td>±0.05</td> <td>±---</td> </tr> <tr> <td>2 PLACES</td> <td>±0.10</td> <td>±---</td> </tr> <tr> <td>1 PLACE</td> <td>±0.2</td> <td>±---</td> </tr> </tbody> </table> ANGULAR ±1/2°		mm	INCH	4 PLACES	±---	±---	3 PLACES	±0.05	±---	2 PLACES	±0.10	±---	1 PLACE	±0.2	±---	MM ONLY DRAWN BY: LKIERMAN 1999/04/20 CHECKED BY: PWHITE 1999/05/04 APPROVED BY: MWLHITE 1999/05/04	5:1	METRIC	TITLE: APPLI-MATE 2.5 FEMALE 5MM TERMINAL PITCH MOLEX INCORPORATED DOCUMENT NO. SD-90872-001 SHEET NO. 1 OF 3
		mm	INCH																		
	4 PLACES	±---	±---																		
3 PLACES	±0.05	±---																			
2 PLACES	±0.10	±---																			
1 PLACE	±0.2	±---																			
DRAFT WHERE APPLICABLE MUST REMAIN WITHIN DIMENSIONS	SEE SHEET 2&3	MATERIAL NO.																			
		SIZE: A2																			

13 12 11 10 9 8 7 6 5 4 3 2 1

20 19 18 17 16 15 14 13 12 11 10 9 8 7 6 5 4 3 2 1

2 CIRCUIT									
MOLEX PART NO.	REMOVED POSITION KEYS	CONFIGURATION (SEE NOTE 1)	REF.	END WALLS	POLARIZING RIB	LOCKING DEVICE	CONTACT PITCH	CABLE TYPE (SEE NOTE 2)	COLOUR STRIPE
90872-0002	NONE		K00	OPEN	NO	NO	5.0	A	NATURAL
90872-0003	a		K30	OPEN	NO	NO	5.0	A	NATURAL
90872-0004	b		K31	OPEN	NO	NO	5.0	A	NATURAL
90872-0005	c		K32	OPEN	NO	NO	5.0	A	NATURAL
90872-0006	d		K33	OPEN	NO	NO	5.0	A	NATURAL
90872-0007	b d		K34	OPEN	NO	NO	5.0	A	NATURAL
90872-0008	a c		K35	OPEN	NO	NO	5.0	A	NATURAL
90872-0009	a d		K36	OPEN	NO	NO	5.0	A	NATURAL
90872-0010	a b		K37	OPEN	NO	NO	5.0	A	NATURAL
90872-0011	b c		K38	OPEN	NO	NO	5.0	A	NATURAL
90872-0012	c d		K39	OPEN	NO	NO	5.0	A	NATURAL
90872-0501	NONE		-	CLOSED	BETWEEN HSG CKT 1 & CKT 2	NO	5.0	A	NATURAL
90872-0014	b c d		K40	OPEN	NO	NO	5.0	A	NATURAL
90872-0351	d		K00	OPEN	NO	NO	5.0	B	GREEN
90872-0013	b c		K38	OPEN	NO	NO	5.0	A	RED
90872-0015	b c d		K40	OPEN	NO	NO	5.0	A	BLUE
90872-0016	c d		K39	OPEN	NO	NO	5.0	A	BLUE
90872-0017	NONE		-	OPEN	BETWEEN HSG CKT 2 & CKT 3	NO	5.0	A	NATURAL
90872-0018	NONE		-	OPEN	BETWEEN HSG CKT 1 & CKT 2	NO	5.0	A	NATURAL
90872-0354	d		K30	OPEN	NO	NO	5.0	B	NATURAL
90872-0019	a		K30	OPEN	NO	NO	5.0	A	RED
90872-0020	d		K33	OPEN	NO	NO	5.0	A	BLUE
90872-0352	a b		K37	OPEN	NO	NO	5.0	B	NATURAL
90872-0021	NONE		K00	OPEN	NO	NO	5.0	A	RED
90872-0022	c d		K39	OPEN	NO	NO	5.0	A	RED
90872-0023	c		-	1ST OPEN LAST CLOSED	NO	NO	5.0	A	NATURAL

2 CIRCUIT									
MOLEX PART NO.	REMOVED POSITION KEYS	CONFIGURATION (SEE NOTE 1)	REF.	END WALLS	POLARIZING RIB	LOCKING DEVICE	CONTACT PITCH	CABLE TYPE (SEE NOTE 2)	COLOUR STRIPE
90872-0024	a b d		-	OPEN	NO	NO	5.0	A	NATURAL
90872-0025	b d		-	OPEN	NO	NO	5.0	A	GREEN

3 CIRCUIT									
MOLEX PART NO.	REMOVED POSITION KEYS	CONFIGURATION (SEE NOTE 1)	REF.	END WALLS	POLARIZING RIB	LOCKING DEVICE	CONTACT PITCH	CABLE TYPE (SEE NOTE 2)	COLOUR STRIPE
90872-1001	NONE		K00	OPEN	NO	NO	5.0	A	NATURAL
90872-1002	b		K35	OPEN	NO	NO	5.0	A	NATURAL
90872-1003	c		K36	OPEN	NO	NO	5.0	A	NATURAL
90872-1004	c d e		K40	OPEN	NO	NO	5.0	A	NATURAL
90872-1005	NONE		-	OPEN	BETWEEN HSG CKT 4 & CKT 5	NO	5.0	A	NATURAL
90872-1007	NONE		-	OPEN	BETWEEN HSG CKT 1 & CKT 2	NO	5.0	A	NATURAL
90872-1008	b c e		K00	OPEN	NO	NO	5.0	A	NATURAL
90872-1009	d e		K38	OPEN	NO	NO	5.0	A	NATURAL
90872-1501	NONE		-	CLOSED	BETWEEN HSG CKT 1 & CKT 5	NO	5.0	A	NATURAL
90872-1010	a d e f		-	OPEN	NONE	NONE	5.0	A	NATURAL
90872-1011	e f		-	OPEN	NONE	NONE	5.0	A	NATURAL

**NOTES**  
 1. + DENOTES TERMINAL VOIDED POSITION  
 @ DENOTES TERMINAL LOADED POSITION  
 | DENOTES POLARIZING POSITION  
 2. A- APPLICABLE CABLE: 0.22 - 0.36 sqmm (12 CONDUCTORS)  
 B- APPLICABLE CABLE: 0.22 sqmm (7 CONDUCTORS)  
 0.34 sqmm (7 CONDUCTORS)

SEE SHEET 1 SEC. NO. E2010-0367 DRAWN BY: KIERAN CHECKED BY: MWL/WHITE APPROVED BY: MWL/WHITE DATE: 2010/04/28 1999/05/04 2010/05/20	<b>QUALITY SYMBOLS</b> 	<b>GENERAL TOLERANCES (UNLESS SPECIFIED)</b> <table border="1"> <tr> <th></th> <th>mm</th> <th>INCH</th> </tr> <tr> <td>4 PLACES</td> <td>± 0.10</td> <td>± 0.004</td> </tr> <tr> <td>3 PLACES</td> <td>± 0.05</td> <td>± 0.002</td> </tr> <tr> <td>2 PLACES</td> <td>± 0.10</td> <td>± 0.004</td> </tr> <tr> <td>1 PLACE</td> <td>± 0.2</td> <td>± 0.008</td> </tr> </table>		mm	INCH	4 PLACES	± 0.10	± 0.004	3 PLACES	± 0.05	± 0.002	2 PLACES	± 0.10	± 0.004	1 PLACE	± 0.2	± 0.008	<b>DIMENSION STYLE</b> MM ONLY DRAWN BY: DATE: KIERAN 1999/04/20 CHECKED BY: DATE: MWL/WHITE 1999/05/04 APPROVED BY: DATE: MWL/WHITE 1999/05/04 MATERIAL NO.: DOCUMENT NO.:	SCALE: 1:1 DESIGN UNITS: METRIC THIRD ANGLE PROJECTION <b>APPLI-MATE 2.5 FEMALE 5MM TERMINAL PITCH</b> <b>MOLEX INCORPORATED</b> SD-90872-001 SHEET NO. 2 OF 3
		mm	INCH																
	4 PLACES	± 0.10	± 0.004																
	3 PLACES	± 0.05	± 0.002																
2 PLACES	± 0.10	± 0.004																	
1 PLACE	± 0.2	± 0.008																	
DRAFT WHERE APPLICABLE MUST REMAIN WITHIN DIMENSIONS		<b>SEE CHARTS</b> THIS DRAWING CONTAINS INFORMATION THAT IS PROPRIETARY TO MOLEX INCORPORATED AND SHOULD NOT BE USED WITHOUT WRITTEN PERMISSION																	

19 18 17 16 15 14 13 12 11 10 9 8 7 6 5 4 3 2 1

4 CIRCUIT									
MOLEX PART NO.	REMOVED POSITION KEYS	CONFIGURATION (SEE NOTE 1)	REF.	END WALLS	POLARIZING RB	LOCKING DEVICE	CONTACT PITCH	CABLE TYPE (SEE NOTE 2)	COLOUR STRIPE
90872-2001	NONE	□□□□□□□□ ④+④+④+④+④+④ 2 3 4	K00	OPEN	NO	NO	5.0	A	NATURAL
90872-2002	a	□□□□□□□□ ④+④+④+④+④+④ 2 3 4	K30	OPEN	NO	NO	5.0	A	NATURAL
90872-2003	b	□□□□□□□□ ④+④+④+④+④+④ 2 3 4	K31	OPEN	NO	NO	5.0	A	NATURAL
90872-2004	d f	□□□□□□□□ ④+④+④+④+④+④ 2 3 4	K37	OPEN	NO	NO	5.0	A	NATURAL
90872-2005	a e g	□□□□□□□□ ④+④+④+④+④+④ 2 3 4	K43	OPEN	NO	NO	5.0	A	RED
90872-2006	c e	□□□□□□□□ ④+④+④+④+④+④ 2 3 4	K49	OPEN	NO	NO	5.0	A	NATURAL
90872-2007	b c d f	□□□□□□□□ ④+④+④+④+④+④ 2 3 4	-	OPEN	NO	NO	5.0	A	NATURAL
90872-2008	d e f g	□□□□□□□□ ④+④+④+④+④+④ 2 3 4	-	OPEN	NO	NO	5.0	A	NATURAL
90872-2009	a b e f h	□□□□□□□□ ④+④+④+④+④+④ 2 3 4	-	OPEN	NO	NO	5.0	A	NATURAL
90872-2010	a c e g	□□□□□□□□ ④+④+④+④+④+④ 2 3 4	-	OPEN	NONE	NONE	5.0	A	NATURAL
90872-2011	a b d f g h	□□□□□□□□ ④+④+④+④+④+④ 2 3 4	-	OPEN	NONE	NONE	5.0	A	NATURAL

7 CIRCUIT									
MOLEX PART NO.	REMOVED POSITION KEYS	CONFIGURATION (SEE NOTE 1)	REF.	END WALLS	POLARIZING RB	LOCKING DEVICE	CONTACT PITCH	CABLE TYPE (SEE NOTE 2)	COLOUR STRIPE
90872-5001	a c e g i k m	□□□□□□□□□□ ④+④+④+④+④+④+④+④+④+④+④ 2 3 4 5 6	K03	OPEN	NO	NO	5.0	A	NATURAL
90872-5002	c d g h i j k	□□□□□□□□□□ ④+④+④+④+④+④+④+④+④+④+④ 2 3 4 5 6 7	-	OPEN	NO	NO	5.0	A	NATURAL

8 CIRCUIT									
MOLEX PART NO.	REMOVED POSITION KEYS	CONFIGURATION (SEE NOTE 1)	REF.	END WALLS	POLARIZING RB	LOCKING DEVICE	CONTACT PITCH	CABLE TYPE (SEE NOTE 2)	COLOUR STRIPE
90872-6001	NONE	□□□□□□□□□□ ④+④+④+④+④+④+④+④+④+④+④ 2 3 4 5 6 7 8	K00	OPEN	NO	NO	5.0	A	NATURAL

5 CIRCUIT									
MOLEX PART NO.	REMOVED POSITION KEYS	CONFIGURATION (SEE NOTE 1)	REF.	END WALLS	POLARIZING RB	LOCKING DEVICE	CONTACT PITCH	CABLE TYPE (SEE NOTE 2)	COLOUR STRIPE
90872-3001	NONE	□□□□□□□□□□ ④+④+④+④+④+④+④+④+④+④+④ 2 3 4 5	K00	OPEN	NO	NO	5.0	A	NATURAL
90872-3002	a c	□□□□□□□□□□ ④+④+④+④+④+④+④+④+④+④+④ 2 3 4 5	K69	OPEN	NONE	NONE	5.0	A	NATURAL

6 CIRCUIT									
MOLEX PART NO.	REMOVED POSITION KEYS	CONFIGURATION (SEE NOTE 1)	REF.	END WALLS	POLARIZING RB	LOCKING DEVICE	CONTACT PITCH	CABLE TYPE (SEE NOTE 2)	COLOUR STRIPE
90872-4001	NONE	□□□□□□□□□□ ④+④+④+④+④+④+④+④+④+④+④ 2 3 4 5 6	K00	OPEN	NO	NO	5.0	A	NATURAL

- NOTES**
- + DENOTES TERMINAL VOIDED POSITION  
 ● DENOTES TERMINAL LOADED POSITION  
 † DENOTES POLARIZING RB POSITION
  - A - APPLICABLE CABLE: 0.22 - 0.30 sqmm (12 CONDUCTORS)  
 B - APPLICABLE CABLE: 0.22 sqmm (7 CONDUCTORS)  
 0.34 sqmm (7 CONDUCTORS)

SEE SHEET 1 SEC. NO. E2010-0367 (OR) N/A MOLEX (C) MOLEX WHITE APPROVED MOLEX 2010/05/20	QUALITY SYMBOLS	GENERAL TOLERANCES (UNLESS SPECIFIED)	DIMENSION STYLE	SCALE	DESIGN UNITS	THIRD ANGLE PROJECTION
	▽=0	mm INCH	MM ONLY	1:1	METRIC	
		4 PLACES ± 0.10	DRAWN BY DATE			
		3 PLACES ± 0.05	K IERNAN 1999/04/20	TITLE		
	2 PLACES ± 0.10	CHECKED BY DATE				
	1 PLACE ± 0.2	APPROVED BY DATE				
	ANGULAR ± 1/2°	M WILHITE 1999/05/04	NATURAL NO.	MOLEX	MOLEX INCORPORATED	
	DRAFT WHERE APPLICABLE MUST REMAIN WITHIN DIMENSIONS	SEE CHARTS	DOCUMENT NO.	SD-90872-001		
		SIZE 1 THIS DRAWING CONTAINS INFORMATION THAT IS PROPRIETARY TO MOLEX INCORPORATED AND SHOULD NOT BE USED WITHOUT WRITTEN PERMISSION			SHEET NO. 3 OF 3	