

## Excellent Integrated System Limited

Stocking Distributor

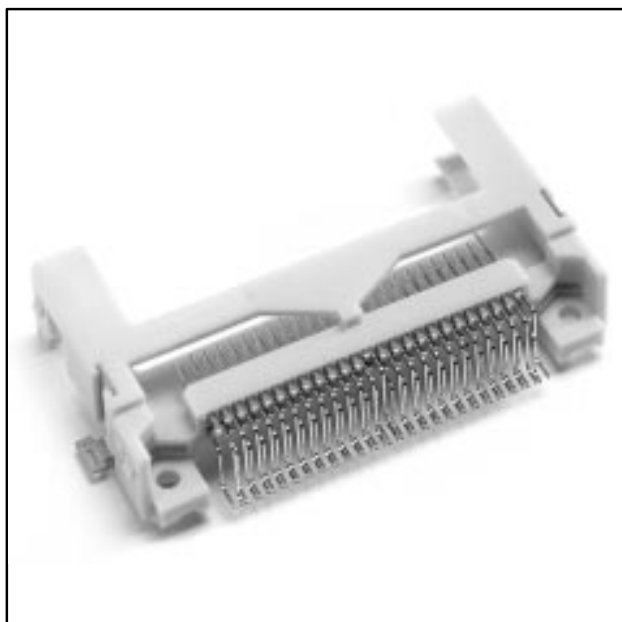
Click to view price, real time Inventory, Delivery & Lifecycle Information:

[3M](#)  
[D7E50-7316-03](#)

For any questions, you can email us directly:  
[sales@integrated-circuit.com](mailto:sales@integrated-circuit.com)

# .050" × .050" CF Card Header

Type I, Surface Mount



- Single row solder tails — 0.635 mm spacing
- Board component clearance — 1.64 mm standoff
- Ejector option — easy removal of CF Card from right angle header
- Meets CFA standards — known reliability
- Retainer Clip option — stability for mobile or high vibration applications

Date Modified: August 2, 2001

TS-0662-17  
Sheet 1 of 4

14

## Physical

### Insulation

Material: Liquid Crystal Polyester (LCP)  
 Flammability: UL 94V-0  
 Color: Beige

### Contact

Material: Copper Alloy

### Plating

Underplate: 100 μ" [ 2.54 μm ] Nickel — QQ-N-290, Class 2  
 Wiping Area: Gold Flash over 80/20 Palladium Nickel  
 Solder Tails: 50 μ" [ 1.27 μm ] 85/15 Tin Lead — MIL-P-81728

## Electrical

**Current Rating:** .5 A  
**Insulation Resistance:** >1 × 10<sup>9</sup> Ω at 500 Vdc  
 >1 × 10<sup>8</sup> Ω at 500 Vdc after Environmental Conditioning  
**Withstanding Voltage:** 500 Vrms at Sea Level

## Environmental

**Temperature Rating:** -55°C to +85°C  
**Process Rating:** Maximum 235°C, with 90 seconds over 215°C

UL File No.: E68080

### 3M Interconnect Solutions Division

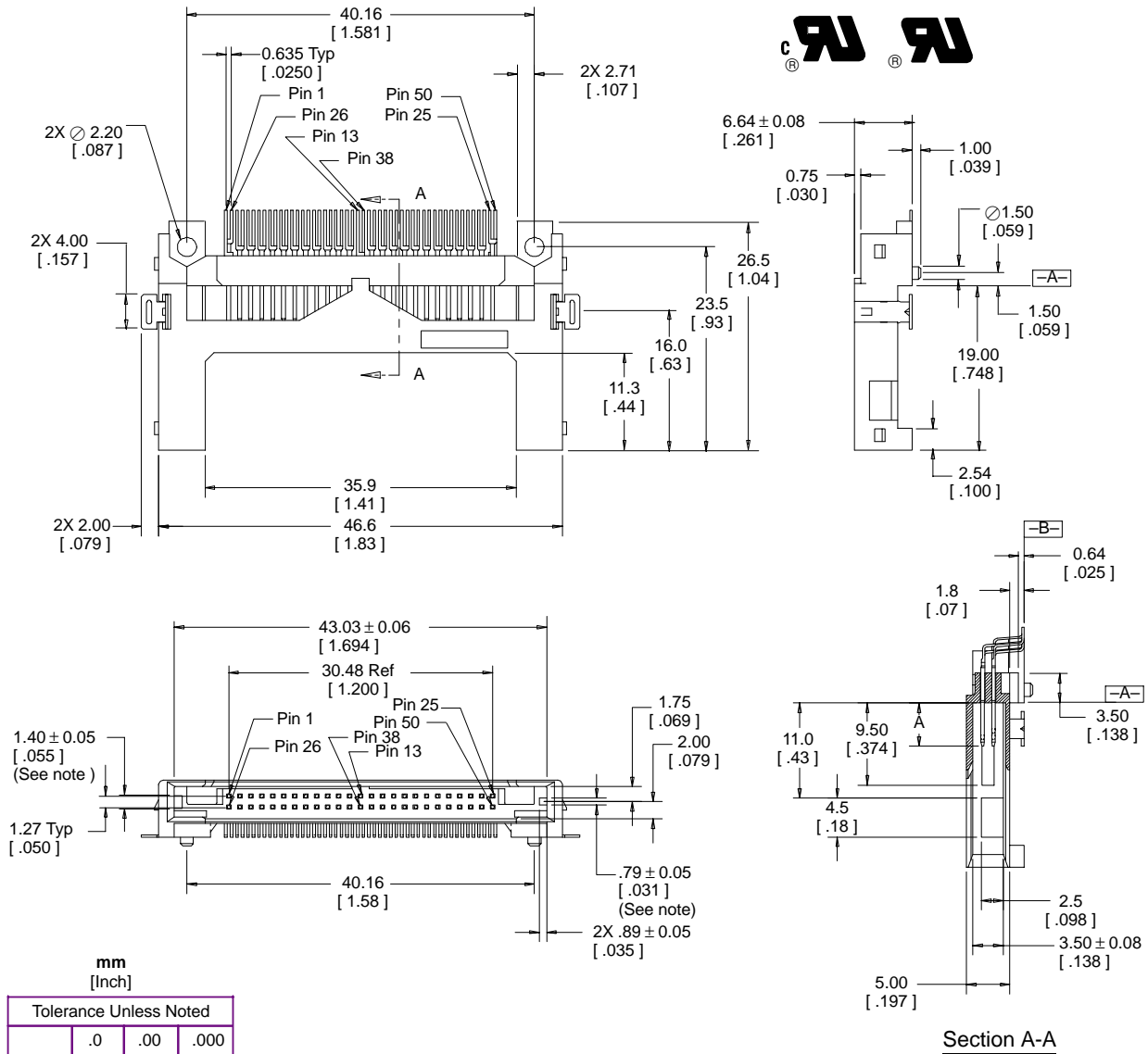
6801 River Place Blvd.  
 Austin, TX 78726-9000

For technical, sales or ordering information call  
**800-225-5373**

# .050" × .050" CF Card Header

## Type I, Surface Mount

Pin Type	Interface Dim A	Pin No.
detect	3.50 [ .138 ]	25, 26
general	4.25 [ .167 ]	all other pins
power	5.00 [ .197 ]	1, 13, 38 & 50



mm [Inch]

Tolerance Unless Noted			
	.0	.00	.000
mm	±.3	±.15	

[ ] Dimensions for Reference only

Note: Normal ( Option "7" ) style shown. For Inverse style rotate polarization keys and pin call outs 180°.

### Ordering Information

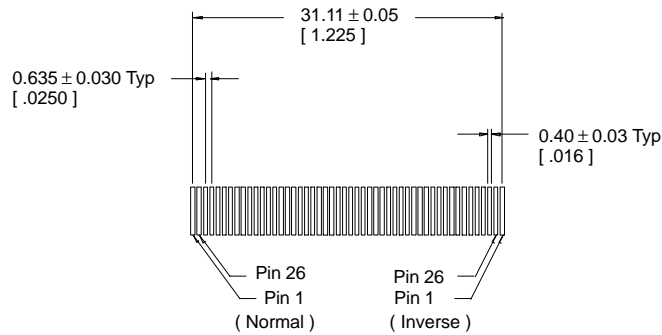
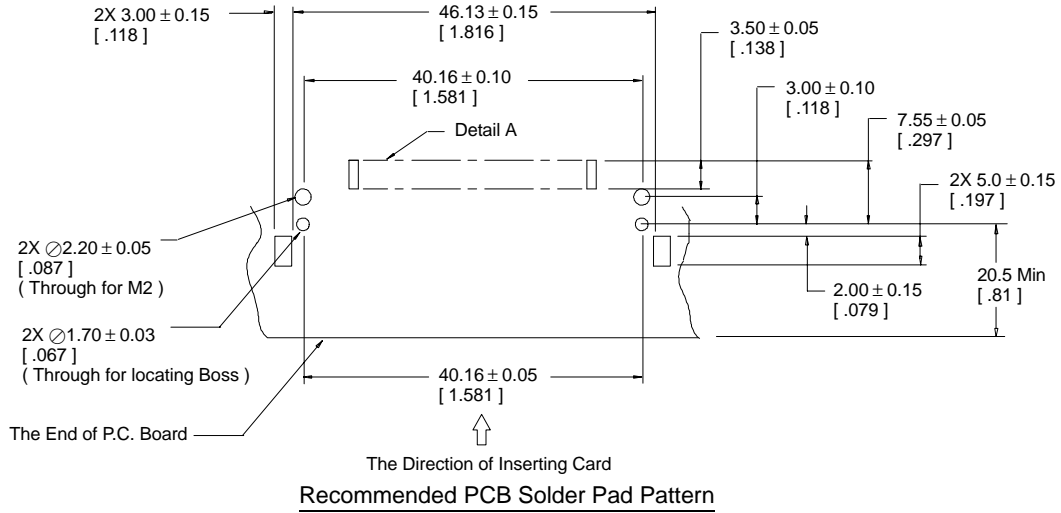
**N7E50-X516XX-20**

Options: CF Card Polarization  
 7 = Normal  
 A = Inverse

Plating  
 VU = Au Flash over 25μ" [ 0.64μm ] PdNi

TS-0662-17  
 Sheet 2 of 4

**.050" × .050" CF Card Header**  
 Type I, Surface Mount

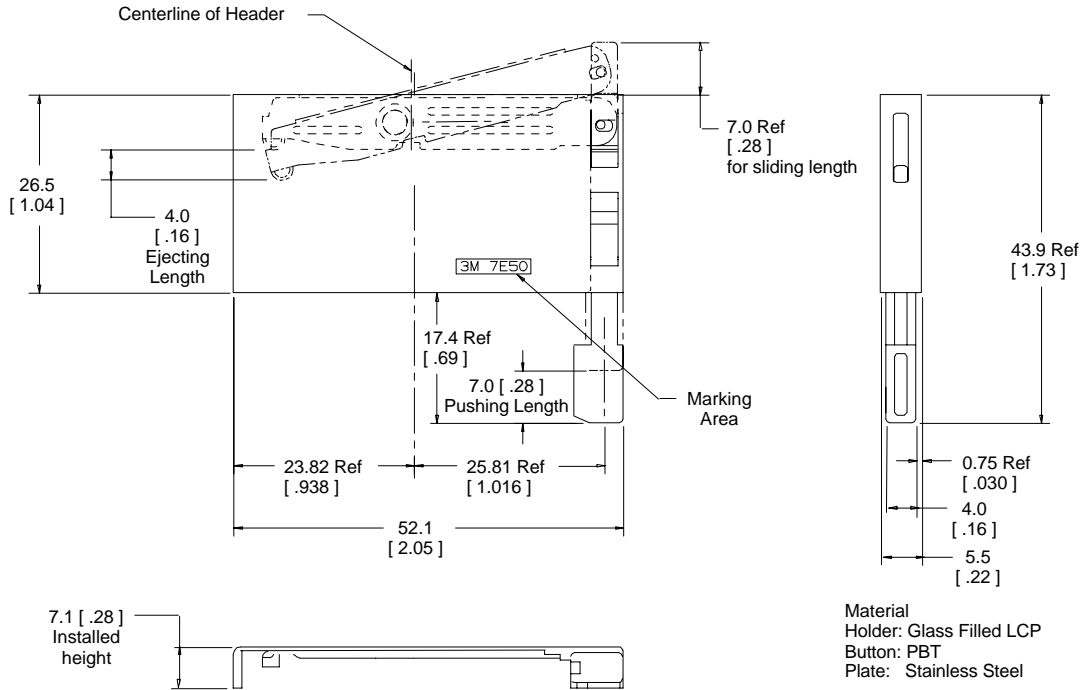


**Detail A**

**.050" × .050" CF Card Header**  
 Type I, Surface Mount

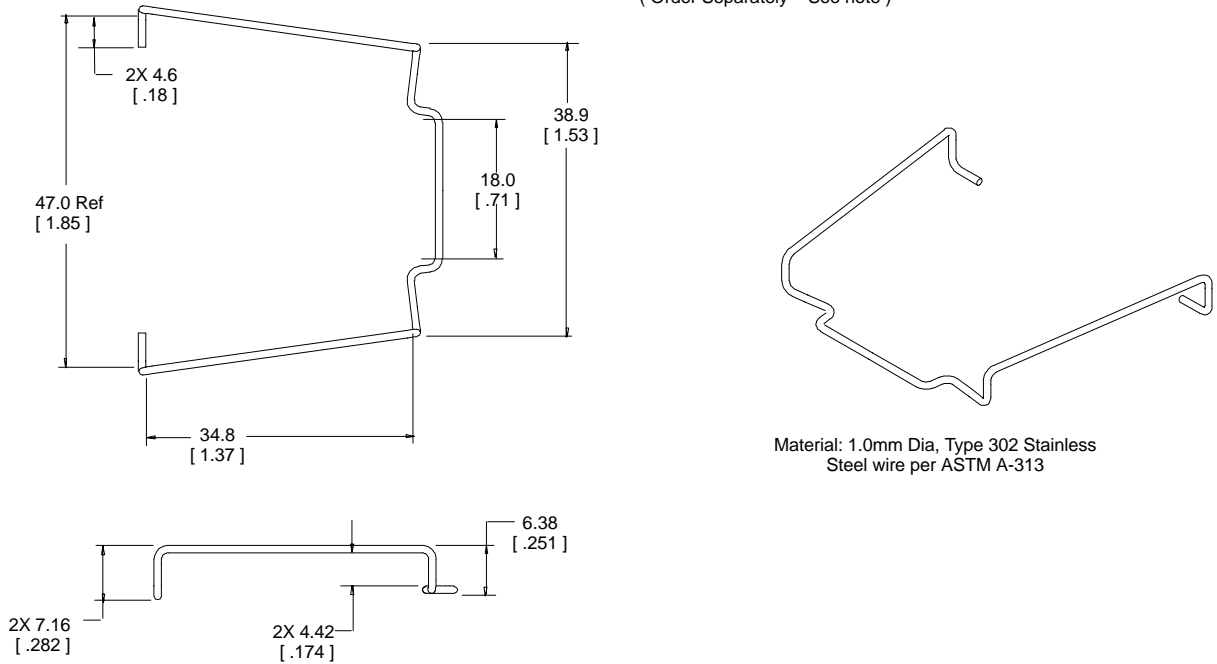
**Right Button Ejector 3M Part D7E50-7316-03**

( Order Separately – See note )



**CF Card Retainer Clip 3M Part 3505-34**

( Order Separately – See note )



Note: Use of either an ejector or a retainer clip excludes the use of the other.

TS-0662-17  
 Sheet 4 of 4