

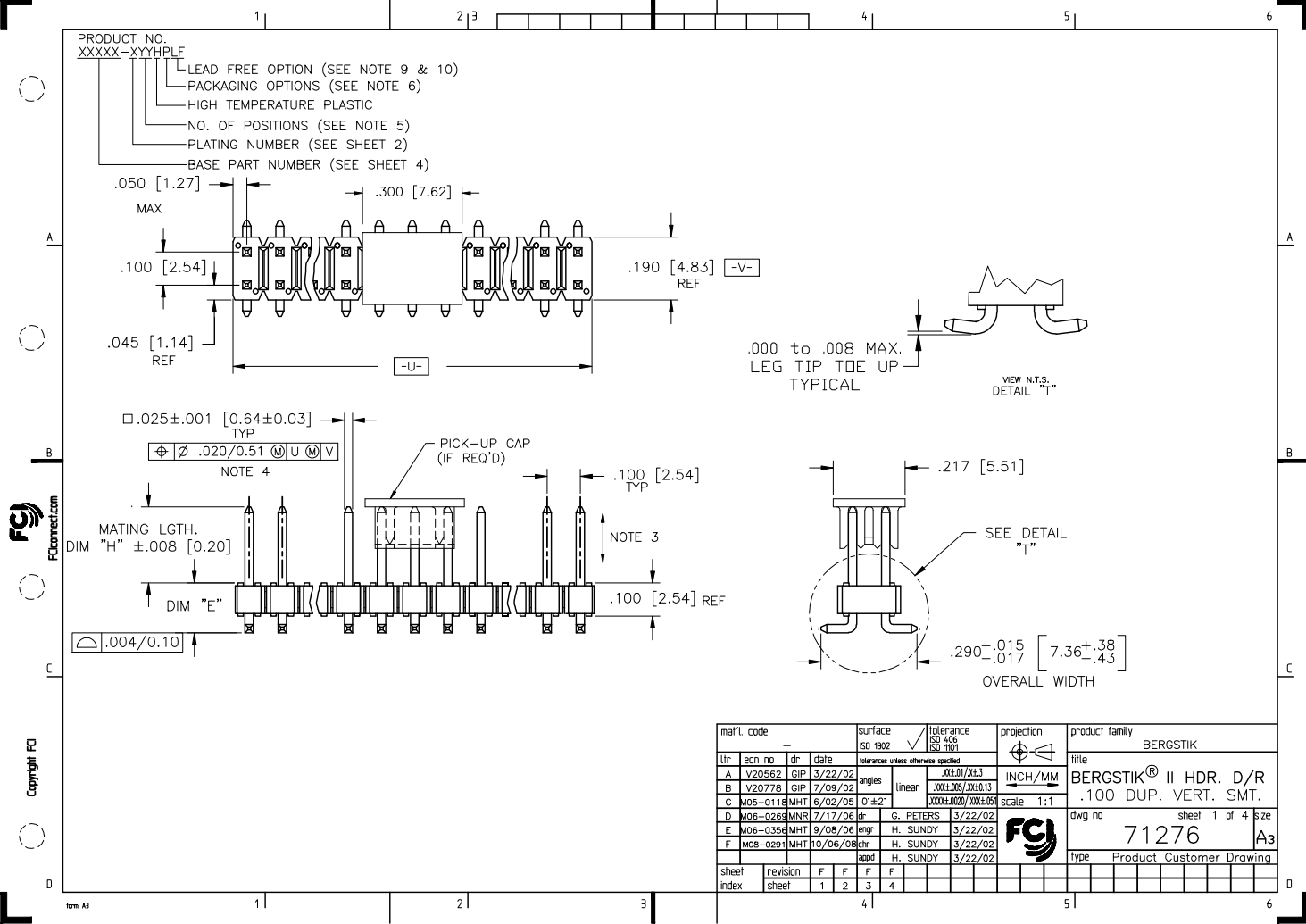
## Excellent Integrated System Limited

Stocking Distributor

Click to view price, real time Inventory, Delivery & Lifecycle Information:

[FCI](#)  
[71276-106HVLV](#)

For any questions, you can email us directly:  
[sales@integrated-circuit.com](mailto:sales@integrated-circuit.com)



mat'l. code		surface		tolerance		projection		product family		
-		ISO 1902		ISO 406 ISO 1101		INCH/MM		BERGSTIK		
tr	ecm no	dr	date	tolerances unless otherwise specified		scale		title		
A	V20562	GIP	3/22/02	angles	XXX.XX/XXX.XX	1:1		BERGSTIK® II HDR. D/R		
B	V20778	GIP	7/09/02	linear	XXX.XXX/XXX.XX	1:1		.100 DUP. VERT. SMT.		
C	M05-0118	MHT	6/02/05	0±2'	XXX.XXXX/XXX.XX	1:1		dwg no		
D	M06-0266	MNR	7/17/06	dr	G. PETERS	3/22/02		sheet 1 of 4 size		
E	M06-0356	MHT	9/08/06	enrg	H. SUNDY	3/22/02		71276		
F	M08-0291	MHT	10/06/06	chr	H. SUNDY	3/22/02		A3		
sheet index		revision	F	F	F	F	Type Product Customer Drawing			
1		sheet	1	2	3	4				

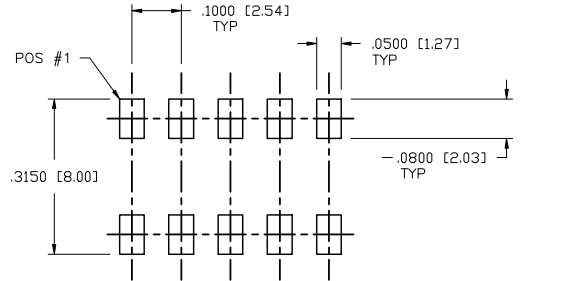
PRODUCT NUMBER	CONTACT AREA "DIM D" PLATING	TAIL PLATING
XXXXX-1YY	30u"/0.76um Au OVER 50u"/1.27um Ni.	100u"/2.54um Sn OVER 50u"/1.27um Ni.
XXXXX-2YY	15u"/0.38um Au OVER 50u"/1.27um Ni.	100u"/2.54um Sn OVER 50u"/1.27um Ni.
XXXXX-4YY	120u"/3.05um Sn OVER 50u"/1.27um Ni.	100u"/2.54um Sn OVER 50u"/1.27um Ni.
XXXXX-1YYLF	30u"/0.76um Au OVER 50u"/1.27um Ni.	100u"/2.54um Sn OVER 50u"/1.27um Ni.
XXXXX-2YYLF	15u"/0.38um Au OVER 50u"/1.27um Ni.	100u"/2.54um Sn OVER 50u"/1.27um Ni.
XXXXX-4YYLF	120u"/3.05um Sn OVER 50u"/1.27um Ni.	100u"/2.54um Sn OVER 50u"/1.27um Ni.

SEE NOTE 8 & 12

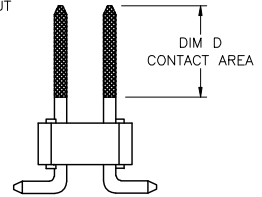
SEE NOTE 8 & 12

NOTES:

- ① BODY MATERIAL: GLASS FIBER REINFORCED PCT FLAME RETARDANT PER UL-94V-0. COLOR: BLACK  
OR  
MINERAL FILL LCP FLAME RETARDANT PER UL-94V-0. COLOR: BLACK
- ② PIN MATERIAL: PHOS-BRONZE.
- ③ 2 Lbs / 0.9 Kg MIN PIN RETENTION IN EITHER DIRECTION.
- ④ MEASURED WITH PART IN RESTRAINED CONDITION.
- ⑤ NUMBER OF POSITIONS FROM 4(2X2) THRU 40(2X20) EXCEPT TAPE-ON-REEL AVAILABLE 4(2X2) THRU 34(2X17) ONLY.
- ⑥ PACKAGING OPTIONS: CHECK SPECIFIC PART NUMBERS FOR AVAILABILITY. PART NUMBERS WITHOUT A SUFFIX ARE PACKAGED IN POLY BAGS. PART NUMBERS FOLLOWED BY A "T" SUFFIX ARE PACKAGED IN TUBES. PART NUMBERS FOLLOWED BY A "V" SUFFIX ARE PACKAGED TAPE-ON-REEL WITH A PICK-UP CAP INSTALLED. THE "Z" DIGIT FOLLOWING THE "V" INDICATES CUSTOMER SPECIAL TAPE.
- ⑦ CONTACT MARKETING BEFORE ORDERING ODD POSITION PART NUMBERS (2X3,2X5,2X7,ETC.).
- ⑧ TIN LEAD PLATED PARTS XXXXX-4XXH WILL NOT HAVE PLATING ON TWO SIDES OF THE PIN TIP TYPICAL BOTH ENDS.
- ⑨ PART NUMBER WITH "LF" SUFFIX AT THE END ARE LEAD FREE.
- ⑩ THIS PRODUCT MEETS EUROPEAN UNION DIRECTIVES AND OTHER COUNTRY REGULATION AS DESCRIBED IN GS-22-008.
11. THE HOUSING WILL WITHSTAND EXPOSURE TO 260°C PEAK TEMPERATURE FOR 20 SECONDS IN A CONVECTION, INFRA-RED OR VAPOR PHASE REFLOW OVEN. SEE APPLICATION NOTES/PROCEDURES IF THEY ARE AVAILABLE
- ⑫ "THIS PRODUCT HAS 100% PURE TIN PLATING IN THE INTERFACE AND HAS NOT BEEN TESTED FOR WHISKER GROWTH IN ALL INTERCONNECT ENVIRONMENTS."

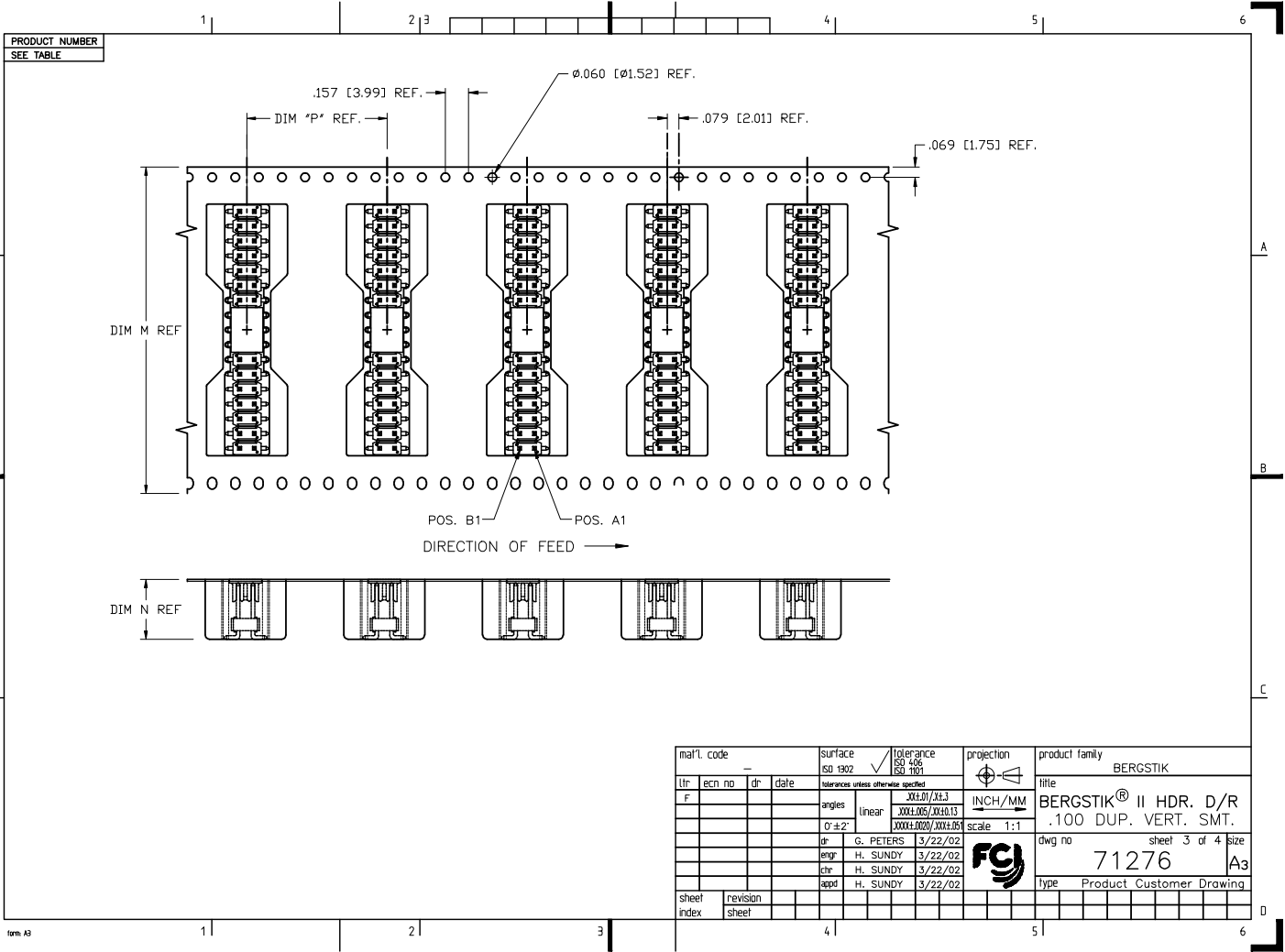


DOUBLE ROW RECOMMENDED PAD LAYOUT SCALE: 4/1



DOUBLE ROW SMT END VIEW

mat'l. code	surface	tolerance	projection	product family
	ISO 1902	ISO 406	ISO 1101	BERGSTIK
tr	ecm no	dr	date	title
F				BERGSTIK® II HDR. D/R
				.100 DUP. VERT. SMT.
				dwg no
				71276
				sheet 2 of 4 size
				A3
				Type Product Customer Drawing
sheet	revision			
index	sheet			



mat'l. code		surface		tolerance		projection		product family	
-		ISO 1902		ISO 406 ISO 1101				BERGSTIK	
tr		ecm no		date				title	
F								BERGSTIK® II HDR. D/R .100 DUP. VERT. SMT.	
						scale 1:1		dwg no	
								71276	
								sheet 3 of 4 size	
								A3	
								Type Product Customer Drawing	
sheet index		revision sheet							

PRODUCT NUMBER	MATING LENGTH DIM "H"	CONTACT AREA DIM "D"	DIM "E"	TAPE WIDTH DIM "M"	POCKET DEPTH DIM "N"	PACKAGING
71276-XYH	.230/5.84	.200/5.08	.150/3.81	2.205/56.00	.433/11.00	POLY BAGS/TAPE ON REEL
71276-408HV	.230/5.84	.200/5.08	.150/3.81	.945/24.00	.433/11.00	TAPE ON REEL
71276-410HV2	.230/5.84	.200/5.08	.150/3.81	.945/24.00	.415/10.54	TAPE ON REEL
71277-XYH	.318/8.08	.288/7.32	.150/3.81	2.205/56.00	.524/13.28	POLY BAGS/TAPE ON REEL, NOTE 7
71276-XYHLF	.230/5.84	.200/5.08	.150/3.81	2.205/56.00	.433/11.00	POLY BAGS/TAPE ON REEL
71276-408HVLV	.230/5.84	.200/5.08	.150/3.81	.945/24.00	.433/11.00	TAPE ON REEL
71276-410HV2LF	.230/5.84	.200/5.08	.150/3.81	.945/24.00	.415/10.54	TAPE ON REEL
71277-XYHLF	.318/8.08	.288/7.32	.150/3.81	2.205/56.00	.524/13.28	POLY BAGS/TAPE ON REEL, NOTE 7

mat'l. code		surface		tolerance		projection		product family	
-		ISO 1902		ISO 406 ISO 1101				BERGSTIK	
tr	ecm no	dr	date	tolerances unless otherwise specified		INCH/MM		title	
F				angles	linear	$\frac{.00150}{.00100}$ $\frac{.00100}{.00100}$ $\frac{.00100}{.00100}$		BERGSTIK® II HDR. D/R .100 DUP. VERT. SMT.	
				0±2'			scale	1:1	
		dr	G. PETERS	3/22/02				dwg no	71276
		engr	H. SUNDY	3/22/02				sheet	4 of 4
		chr	H. SUNDY	3/22/02				size	A3
		appd	H. SUNDY	3/22/02				Type	Product Customer Drawing
sheet index	revision sheet								