

Excellent Integrated System Limited

Stocking Distributor

Click to view price, real time Inventory, Delivery & Lifecycle Information:

[FCI](#)

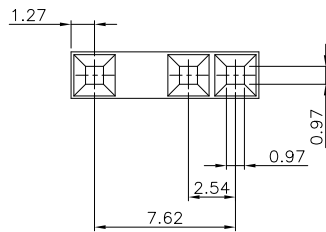
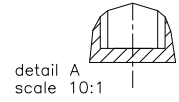
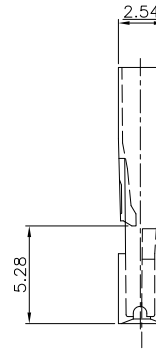
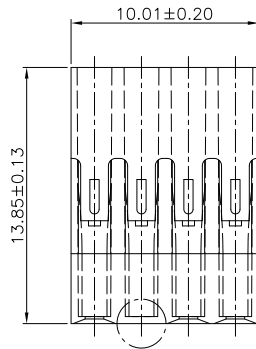
[71627-001LF](#)

For any questions, you can email us directly:

sales@integrated-circuit.com

PRODUCT NUMBER
71627-001LF

"LF" INDICATES THE PRODUCT IS RoHS COMPLIANT, SEE NOTE 5.



NOTES:

1. MATERIAL: POLYPHENYLENE OXYDE (NORYL) COLOR BLACK UL 94V-1
 2. LATCH TERMINAL MUST WITHSTAND A MIN PULL-OUT FORCE OF 2.9 Kg
 3. TERMINALS MUST BE CRIMPED PROPERLY FOR SATISFACTORY LATCHING SEE TA-295 FOR CRIMPING INSTRUCTIONS.
 4. THIS HOUSING IS INTENDED FOR USE WITH MINI PV TERMINAL WITH 22-36 GAUGE WIRE.
 5. - RoHS COMPATIBLE PRODUCT SPECIFICATIONS
 - a - LABELING:
 - MEETS PACKAGING SPECS AS PER GS-14-920
 - LEGAL STATEMENT: SEE GS-22-008
- THE PRODUCT IS NOT INTENDED TO BE EXPOSED TO A MANUFACTURING SOLDER PROCESS.

mat'l code 16-502-001		surface ISO 1902	tolerance ISO 406 ISO 1101	projection 	product family BERGCON
ltr	ec'n no	dr	date	tolerances unless otherwise specified	title
A	H88078	CVE	89.01.12	angles	MINI-LATCH
B	F00405	VIB	00.05.16	linear	POLARIZED S.R.HOUSING
C	F05-0239	DLE	05.08.25	linear	scale 1:1
D	F05-0286	DLE	05.11.07	dr	D LEGRAND 05.08.18
E	F06-0218	DLE	06.07.11	engr	P NIZZI 05.08.18
F	F07-0226	LMU	07.06.26	chr	P NIZZI 05.08.18
G	B-14321	LMU	13.03.21	appd	P NZ 05.08.18
sheet	revision				
index	sheet				