

Excellent Integrated System Limited

Stocking Distributor

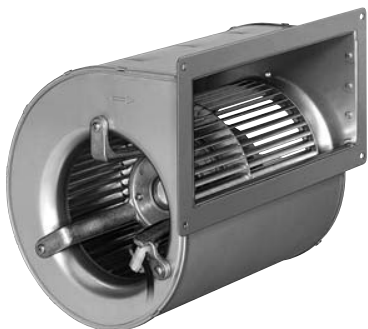
Click to view price, real time Inventory, Delivery & Lifecycle Information:

[ebm-papst Inc.](#)
[D4E146-AA07-22](#)

For any questions, you can email us directly:
sales@integrated-circuit.com

D4E146 Series Centrifugal Blower

Ø 146mm



- AC dual inlet, forward curved centrifugal blower. Via a bracket, the integrated external-rotor motor is mounted on one side of the housing.
- Direction of rotation is CCW as seen from inlet opposite the cable exit. Insulation class "B".
- Maintenance-free ball bearings.
- Housing and impeller made of galvanised sheet-steel. Forward curved impellers are directly press-fitted onto the rotor of the external-rotor motor.
- UL, CSA, VDE approvals on some models, please contact application engineering.

Part Number	Curve	CFM @ 0	VAC	Hertz	Power (W)	dBA	Max Amb. Temp C	Bearing Type	Features	Capacitor (µF)	Wgt. (lbs)
D4E146-AA25-34	1	450	115	60	128	55	50	Ball	Leads	8	7.72
D4E146-AA07-22	1	450	230	60*	116	53	50	Ball	Leads	2	7.72

* 50Hz data available.

