

Excellent Integrated System Limited

Stocking Distributor

Click to view price, real time Inventory, Delivery & Lifecycle Information:

[FCI](#)

[92993-001LF](#)

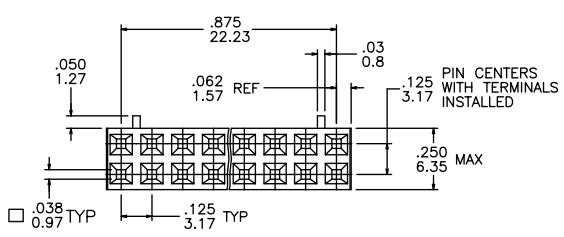
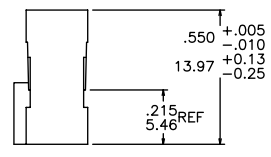
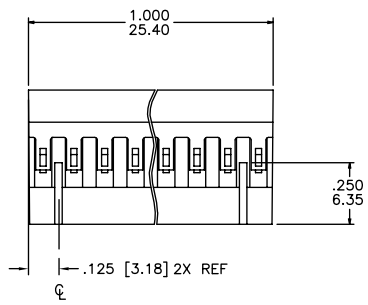
For any questions, you can email us directly:

sales@integrated-circuit.com

Tous droits strictement réservés. Reproduction ou communication à des tiers sans autorisation écrite de FCI. Propriété de FCI. Droits de reproduction FCI.

All rights strictly reserved. Reproduction or issue to third parties in any form without written authority from the proprietor. Property of FCI. Copyright FCI.

PRODUCT NUMBER
92993-001



- NOTES:
- MOLDING MAT'L: MODIFIED POLYPHENYLENE ETHER, COLOR - BLACK, MEETING UL-94V-0.
 - PIN LENGTH TO BE .210/5.33 MIN. RECOMMENDED PIN LENGTH IS .225±.015/5.72±0.38.
 - SEE MINI-P.V.™ TERMINAL TA-75 FOR CORRECT CRIMP HEIGHT FOR EACH WIRE SIZE. IF THIS SPECIFICATION IS NOT MET LATCHING WILL NOT BE SATISFACTORY.
 - THIS HOUSING IS INTENDED FOR USE WITH MINI P.V.™ TERMINAL AND C.T.W. MALE PIN WITH 22-36 A.W.G. WIRE.

NOTE 1				tolerances unless otherwise specified		CUSTOMER COPY		FCI	
ltr	ecn no	dr	date	linear	.xx ±.01/xx±.3	projection	title	www.fciconnect.com	
A	V30270	DEW	D1/18/93	linear	.xxx ±.005/xxx±.13		MINI LATCH HOUSING		
B	V30308	JWB	D1/26/98	angles	.xxxx ±.0020/xxx±.051		DR. .125/3.18x.125/3.18cc	product family	code
C	V51219	MSC	I1/22/95	angles	0° ±2°	INCH/MM	MINI LATCH	size	213
D	V90983	DKE	D6/24/99	dr	D.WHITING D1/18/93	scale	92993	dwg no	sheet
E	V03-1363	PJ	D2/21/04	enrg	T.HANNA D1/18/93	2:1	A		1 of 1
				chr	T.HANNA D1/18/93				
				appd	T.HANNA D1/18/93				
sheet	revision	E							
index	sheet	1							

cage code
22526

ACAD