



Distributor of FCI: Excellent Integrated System Limited

Datasheet of DA7W2S300A00LF - D-Sub Connector Receptacle, Female Sockets 7 (5 + 2 Power) Position Through Hole Solder

Contact us: sales@integrated-circuit.com Website: www.integrated-circuit.com

Excellent Integrated System Limited

Stocking Distributor

Click to view price, real time Inventory, Delivery & Lifecycle Information:

[FCI](#)

[DA7W2S300A00LF](#)

For any questions, you can email us directly:

sales@integrated-circuit.com

Contact us: sales@integrated-circuit.com Website: www.integrated-circuit.com

A

B

C

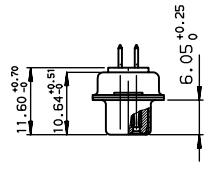
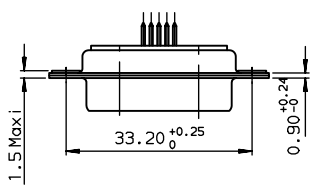
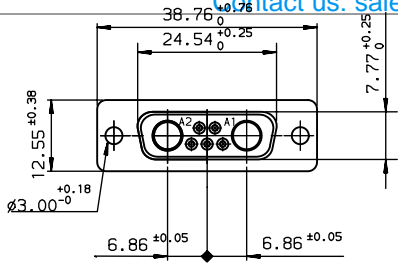
D

A

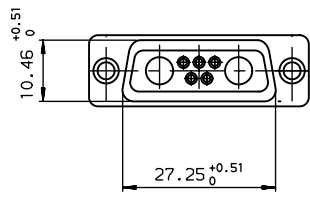
B

C

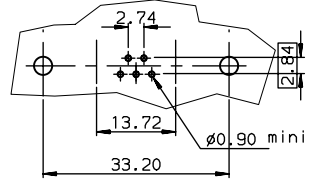
D



DA7W2S300A00LF
PART-NUMBER



LAYOUT DIMENSIONS (after plating)
CONNECTOR SIDE VIEW



GENERAL CHARACTERISTICS AND ROHS INFORMATIONS.
SEE DRAWING C01-8639-0000

European Views

www.fciconnect.com		surface ISO 1302	tolerance std ISO 406 ISO 1101	projection	mm																																							
		TOLERANCES UNLESS OTHERWISE SPECIFIED		size	Scale																																							
Dr	PESSON	2005/12/07	ANGULAR	A3	1.5																																							
Eng	PESSON	2005/12/07	LINEAR	ECN	LS06-0095																																							
Chr	LEGARE	2005/12/07	0.XX ±0.1	Product family	D-SUB																																							
Appr	LEGARE	2005/12/07	0.XXX ±0.1	Spec ref	-																																							
<table border="1"> <thead> <tr> <th>rev</th> <th>ecn no</th> <th>dr</th> <th>date</th> </tr> </thead> <tbody> <tr> <td>A</td> <td>LS05-0106</td> <td>MPE</td> <td>2005/12/07</td> </tr> <tr> <td>B</td> <td>LS06-0095</td> <td>LGO</td> <td>2006/06/15</td> </tr> <tr> <td>-</td> <td>-</td> <td>-</td> <td>-</td> </tr> <tr> <td>-</td> <td>-</td> <td>-</td> <td>-</td> </tr> <tr> <td>-</td> <td>-</td> <td>-</td> <td>-</td> </tr> <tr> <td>-</td> <td>-</td> <td>-</td> <td>-</td> </tr> </tbody> </table>				rev	ecn no	dr	date	A	LS05-0106	MPE	2005/12/07	B	LS06-0095	LGO	2006/06/15	-	-	-	-	-	-	-	-	-	-	-	-	-	-	-	-	<table border="1"> <tr> <td rowspan="2">FCI</td> <td>SOCKET CONNECTOR WITH STRAIGHT</td> <td rowspan="2">2</td> <td rowspan="2">C01-8639-2247</td> <td rowspan="2">Rev. B</td> </tr> <tr> <td>CONTACTS</td> </tr> <tr> <td>catalog no</td> <td>-</td> <td>CUSTOMER</td> <td>sheet 1 of 1</td> <td></td> </tr> </table>		FCI	SOCKET CONNECTOR WITH STRAIGHT	2	C01-8639-2247	Rev. B	CONTACTS	catalog no	-	CUSTOMER	sheet 1 of 1	
rev	ecn no	dr	date																																									
A	LS05-0106	MPE	2005/12/07																																									
B	LS06-0095	LGO	2006/06/15																																									
-	-	-	-																																									
-	-	-	-																																									
-	-	-	-																																									
-	-	-	-																																									
FCI	SOCKET CONNECTOR WITH STRAIGHT	2	C01-8639-2247	Rev. B																																								
	CONTACTS																																											
catalog no	-	CUSTOMER	sheet 1 of 1																																									

Copyright FCI.

REV F - 2008-04-17