



Distributor of FCI: Excellent Integrated System Limited

Datasheet of DAL7W2S443A00LF - D-Sub Connector Receptacle, Female Sockets 7 (5 + 2 Power) Position Through Hole Wire Wrap

Contact us: sales@integrated-circuit.com Website: www.integrated-circuit.com

Excellent Integrated System Limited

Stocking Distributor

Click to view price, real time Inventory, Delivery & Lifecycle Information:

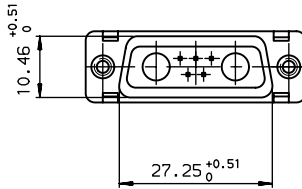
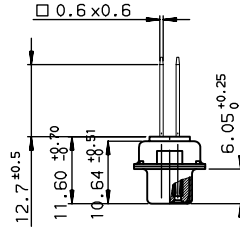
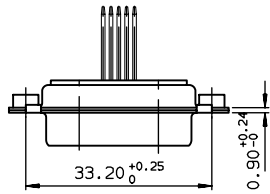
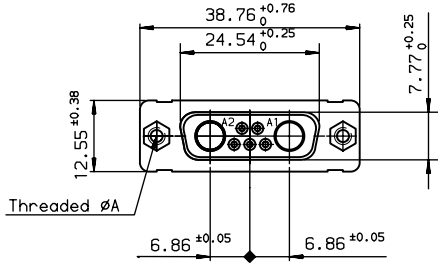
[FCI](#)

[DAL7W2S443A00LF](#)

For any questions, you can email us directly:

sales@integrated-circuit.com

Contact us: sales@integrated-circuit.com Website: www.integrated-circuit.com



DAL7W2S400A00LF	M 3
DA07W2S400A00LF	UNC 4.40
PART NUMBER	Threaded A

GENERAL CHARACTERISTICS AND ROHS INFORMATIONS.
SEE DRAWING C01-8639-0000

European Views

www.fciconnect.com		surface ISO 1302	tolerance std ISO 406 ISO 1101	projection	mm
		TOLERANCES UNLESS OTHERWISE SPECIFIED			
Dr	PESSON	2005/11/22	ANGULAR	size A3	Scale 1.5
Eng	PESSON	2005/11/22	LINEAR	ECN	LS06-0095
Chr	LEGARE	2005/11/22	0.XX ±2	Product family	D-SUB
Appr	LEGARE	2005/11/22	0.XXX ±2	Spec ref	-
FCI		SOCKET CONNECTOR WITH WIRE WRAP		Rev. B	
catalog no	-		CUSTOMER	C01-8639-2252 sheet 1 of 1	

REV F - 2008-04-17

PDM: Rev:B

STATUS **Released**

Printed: Oct 01, 2010