

Excellent Integrated System Limited

Stocking Distributor

Click to view price, real time Inventory, Delivery & Lifecycle Information:

[FCI](#)
[DAM15P500CN](#)

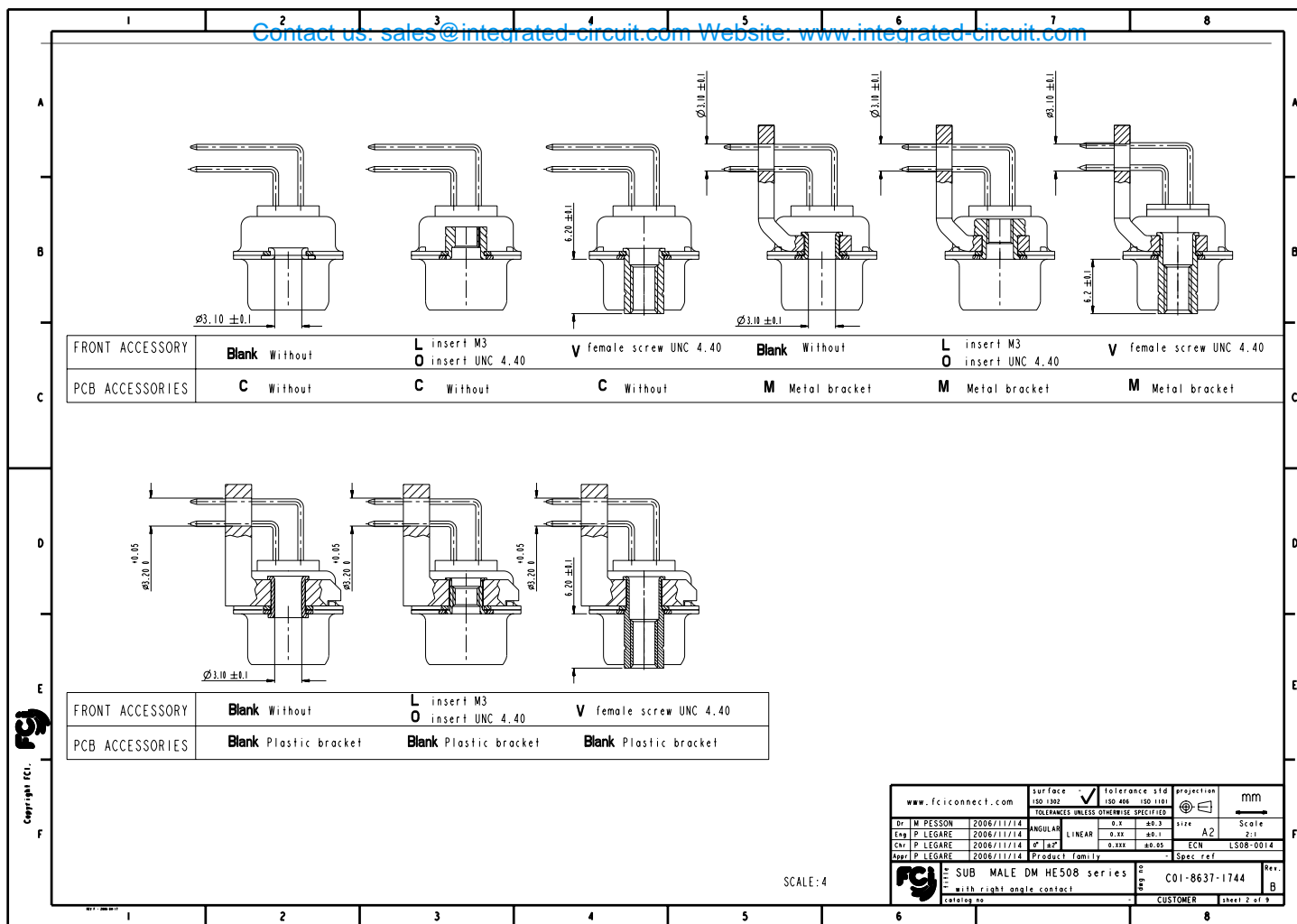
For any questions, you can email us directly:

sales@integrated-circuit.com

Contact us: sales@integrated-circuit.com Website: www.integrated-circuit.com

	1	2	3	4	5	6	7	8																																		
A	REFERENCE SPECIFICATIONS			<div style="text-align: center;"> <h1>DBML25P500MN</h1> <p>Series</p> <p>Shell size: E A B C D (see sheet 3)</p> <p>Front accessory definition (see sheet 2)</p> <p>Blank : without accessory L : threaded insert M3 O : threaded insert UNC 4-40 V : female screw UNC 4-40</p> <p>Layout of contacts (see sheet 3) 9,15,25,37,50</p> <p>Contacts P : Pin</p> <p>Termination type 5 Right angle/Europe standard</p> <p>Plating 00 Right angle 500 matings/unmatings 43 Right angle 500 matings/unmatings for harsh environment</p> <p>PCB accessories definition(see sheet 2) Blank : Plastic brackets C : Without brackets M : Metal brackets</p> </div>																																						
	-NFC 93425 (in compliance with HE 508)																																									
	PHYSICAL CHARACTERISTICS																																									
	-INSULATOR MATERIAL: THERMOSET UL94V0																																									
	-CONTACT MATERIAL: BRASS GOLD OVER NICKEL																																									
B	-ACCESSORIES:																																									
	STEEL FOR METAL BRACKETS Cadmium plated, yellow passivation																																									
	THERMOPLASTIC UL94V0 FOR PLASTIC BRACKETS BRASS FOR OTHERS ACCESSORIES Cadmium plated, yellow passivation																																									
	-SHELLS:																																									
	STEEL Cadmium plated, yellow passivation																																									
C	ELECTRICAL CHARACTERISTICS																																									
	-NOMINAL CURRENT: 7.5A																																									
	-CONTACT RESISTANCE: <:7.3 m Ohms																																									
	-CONTACT/CONTACT : >>1000 V																																									
	-CONTACT/GROUND : >>1200 V																																									
D	-INSULATION RESISTANCE: >>5000 MOhms																																									
	ENVIRONMENTAL CHARACTERISTICS																																									
	-CLIMATIC CATEGORY: 55/155/56																																									
	TEMPERATURE RANGE -55°C TO +155°C																																									
	DAMP HEAT STEADY STATE 56 DAYS SALT SPRAY 48 HOURS																																									
E	MECHANICAL CHARACTERISTICS																																									
	RETENTION AGAINST TORQUE: -Threaded insert:0.7 N.m min -Female screw:0.5 N.m min																																									
	<div style="text-align: center;"> <p>25 WAY FOR EXAMPLE</p> </div>																																									
F	<table border="1"> <thead> <tr> <th>REV</th> <th>REV NO</th> <th>REV DATE</th> <th>REV</th> <th>REV DATE</th> </tr> </thead> <tbody> <tr> <td>A</td> <td>558-0014</td> <td>2006/11/14</td> <td>2006/11/14</td> <td>2006/11/14</td> </tr> <tr> <td>B</td> <td>558-0014</td> <td>2006/11/14</td> <td>2006/11/14</td> <td>2006/11/14</td> </tr> <tr> <td>C</td> <td>558-0014</td> <td>2006/11/14</td> <td>2006/11/14</td> <td>2006/11/14</td> </tr> <tr> <td>D</td> <td>558-0014</td> <td>2006/11/14</td> <td>2006/11/14</td> <td>2006/11/14</td> </tr> <tr> <td>E</td> <td>558-0014</td> <td>2006/11/14</td> <td>2006/11/14</td> <td>2006/11/14</td> </tr> </tbody> </table>			REV	REV NO	REV DATE	REV	REV DATE	A	558-0014	2006/11/14	2006/11/14	2006/11/14	B	558-0014	2006/11/14	2006/11/14	2006/11/14	C	558-0014	2006/11/14	2006/11/14	2006/11/14	D	558-0014	2006/11/14	2006/11/14	2006/11/14	E	558-0014	2006/11/14	2006/11/14	2006/11/14									
	REV	REV NO	REV DATE	REV	REV DATE																																					
	A	558-0014	2006/11/14	2006/11/14	2006/11/14																																					
	B	558-0014	2006/11/14	2006/11/14	2006/11/14																																					
	C	558-0014	2006/11/14	2006/11/14	2006/11/14																																					
D	558-0014	2006/11/14	2006/11/14	2006/11/14																																						
E	558-0014	2006/11/14	2006/11/14	2006/11/14																																						
<table border="1"> <thead> <tr> <th>Dr</th> <th>M. PESSON</th> <th>2006/11/14</th> <th>2006/11/14</th> <th>2006/11/14</th> <th>2006/11/14</th> <th>2006/11/14</th> <th>2006/11/14</th> <th>2006/11/14</th> <th>2006/11/14</th> </tr> </thead> <tbody> <tr> <td>Eng</td> <td>P. LEGARE</td> <td>2006/11/14</td> <td>2006/11/14</td> <td>2006/11/14</td> <td>2006/11/14</td> <td>2006/11/14</td> <td>2006/11/14</td> <td>2006/11/14</td> <td>2006/11/14</td> </tr> <tr> <td>Eng</td> <td>P. LEGARE</td> <td>2006/11/14</td> <td>2006/11/14</td> <td>2006/11/14</td> <td>2006/11/14</td> <td>2006/11/14</td> <td>2006/11/14</td> <td>2006/11/14</td> <td>2006/11/14</td> </tr> <tr> <td>Eng</td> <td>P. LEGARE</td> <td>2006/11/14</td> <td>2006/11/14</td> <td>2006/11/14</td> <td>2006/11/14</td> <td>2006/11/14</td> <td>2006/11/14</td> <td>2006/11/14</td> <td>2006/11/14</td> </tr> </tbody> </table>			Dr	M. PESSON	2006/11/14	2006/11/14	2006/11/14	2006/11/14	2006/11/14	2006/11/14	2006/11/14	2006/11/14	Eng	P. LEGARE	2006/11/14	2006/11/14	2006/11/14	2006/11/14	2006/11/14	2006/11/14	2006/11/14	2006/11/14	Eng	P. LEGARE	2006/11/14	2006/11/14	2006/11/14	2006/11/14	2006/11/14	2006/11/14	2006/11/14	2006/11/14	Eng	P. LEGARE	2006/11/14	2006/11/14	2006/11/14	2006/11/14	2006/11/14	2006/11/14	2006/11/14	2006/11/14
Dr	M. PESSON	2006/11/14	2006/11/14	2006/11/14	2006/11/14	2006/11/14	2006/11/14	2006/11/14	2006/11/14																																	
Eng	P. LEGARE	2006/11/14	2006/11/14	2006/11/14	2006/11/14	2006/11/14	2006/11/14	2006/11/14	2006/11/14																																	
Eng	P. LEGARE	2006/11/14	2006/11/14	2006/11/14	2006/11/14	2006/11/14	2006/11/14	2006/11/14	2006/11/14																																	
Eng	P. LEGARE	2006/11/14	2006/11/14	2006/11/14	2006/11/14	2006/11/14	2006/11/14	2006/11/14	2006/11/14																																	
<table border="1"> <thead> <tr> <th>surface</th> <th>150-180</th> <th>150-400</th> <th>150-1100</th> <th>projection</th> <th>mm</th> </tr> </thead> <tbody> <tr> <td>ANGULAR</td> <td>0.2</td> <td>0.3</td> <td>0.4</td> <td>0.5</td> <td>0.6</td> </tr> <tr> <td>LINEAR</td> <td>0.1</td> <td>0.2</td> <td>0.3</td> <td>0.4</td> <td>0.5</td> </tr> <tr> <td>Product family</td> <td colspan="5">Sub Male DM HE508 series</td> </tr> <tr> <td>with right angle contact</td> <td colspan="5">C01-8637-1744</td> </tr> <tr> <td>CUSTOMER</td> <td colspan="5">sheet 1 of 3</td> </tr> </tbody> </table>			surface	150-180	150-400	150-1100	projection	mm	ANGULAR	0.2	0.3	0.4	0.5	0.6	LINEAR	0.1	0.2	0.3	0.4	0.5	Product family	Sub Male DM HE508 series					with right angle contact	C01-8637-1744					CUSTOMER	sheet 1 of 3								
surface	150-180	150-400	150-1100	projection	mm																																					
ANGULAR	0.2	0.3	0.4	0.5	0.6																																					
LINEAR	0.1	0.2	0.3	0.4	0.5																																					
Product family	Sub Male DM HE508 series																																									
with right angle contact	C01-8637-1744																																									
CUSTOMER	sheet 1 of 3																																									

Contact us: sales@integrated-circuit.com Website: www.integrated-circuit.com



Contact us: sales@integrated-circuit.com Website: www.integrated-circuit.com

PART NUMBER	FRONT ACCESSORY	PCB ACCESSORY
D*MxxP500CN	without	without
D*MLxxP500CN	insert M3	without
D*MOxxP500CN	insert UNC 4.40	without
D*MVxxP500CN	female screw UNC 4.40	without
D*MxxP500MN	without	Metal bracket
D*MLxxP500MN	insert M3	Metal bracket
D*MOxxP500MN	insert UNC 4.40	Metal bracket
D*MVxxP500MN	female screw UNC 4.40	Metal bracket
D*MxxP500N	without	Plastic bracket
D*MLxxP500N	insert M3	Plastic bracket
D*MOxxP500N	insert UNC 4.40	Plastic bracket
D*MVxxP500N	female screw UNC 4.40	Plastic bracket

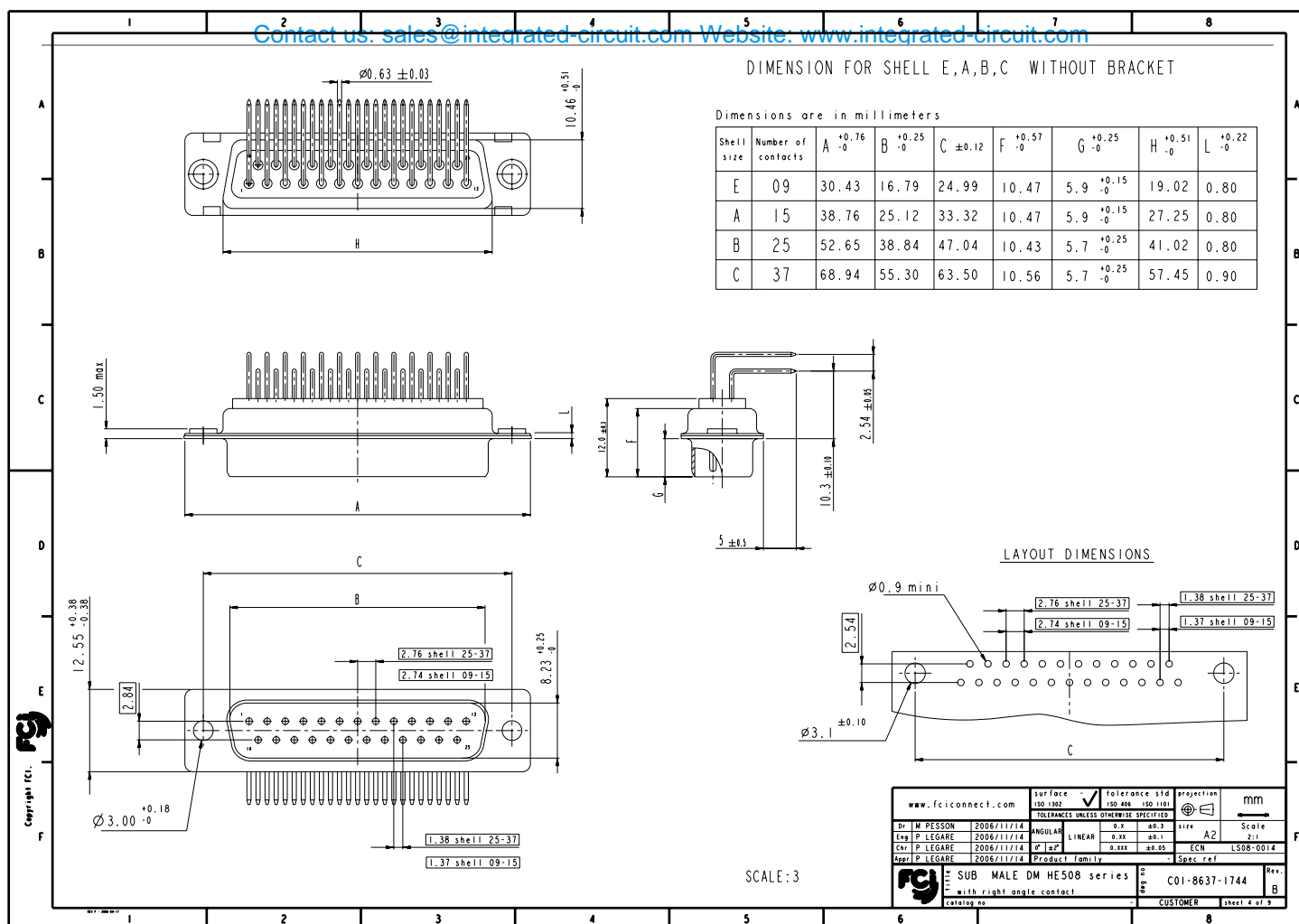
shell size	Contact number
E	09
A	15
B	25
C	37
D	50

PART NUMBER	FRONT ACCESSORY	PCB ACCESSORY
D*MxxP543CN	without	without
D*MLxxP543CN	insert M3	without
D*MOxxP543CN	insert UNC 4.40	without
D*MVxxP543CN	female screw UNC 4.40	without
D*MxxP543MN	without	Metal bracket
D*MLxxP543MN	insert M3	Metal bracket
D*MOxxP543MN	insert UNC 4.40	Metal bracket
D*MVxxP543MN	female screw UNC 4.40	Metal bracket
D*MxxP543N	without	Plastic bracket
D*MLxxP543N	insert M3	Plastic bracket
D*MOxxP543N	insert UNC 4.40	Plastic bracket
D*MVxxP543N	female screw UNC 4.40	Plastic bracket

CROSS REFERENCES HE501 and FCI

HE508 P/N	FCI P/N	FRONT ACCESSORY	PCB ACCESSORY
HE508PxxVP6	D*MxxP500N	without	Plastic bracket
HE508MxxVP6	D*MxxP500MN	without	Metal bracket

www.fciconnect.com		surface <input checked="" type="checkbox"/> 150-1902 <input type="checkbox"/> 150-400 <input type="checkbox"/> 150-1100		tolerance std		projection		mm	
TOLERANCES UNLESS OTHERWISE SPECIFIED									
Dr	M. PESSON	2006/11/14	ANGULAR	0.2	0.3	size	A2	Scale	2:1
Eng	P. LEGARE	2006/11/14	LINEAR	0.1x	0.1	ECN	LS08-0014		
Chk	P. LEGARE	2006/11/14	0.1x	0.05	Spec ref				
Appr	P. LEGARE	2006/11/14	Product family						
SUB MALE DM HE508 series		C01-8637-1744		Rev.		B			
with right angle contact		CUSTOMER		sheet 3 of 9					

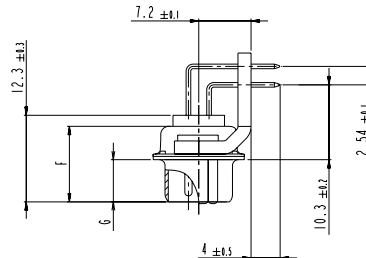
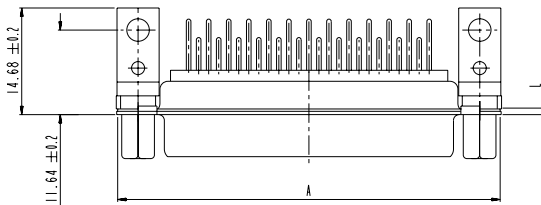
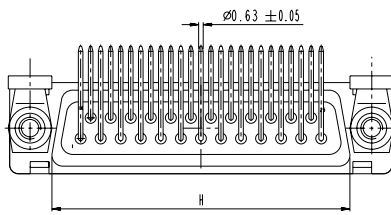


Contact us: sales@integrated-circuit.com Website: www.integrated-circuit.com

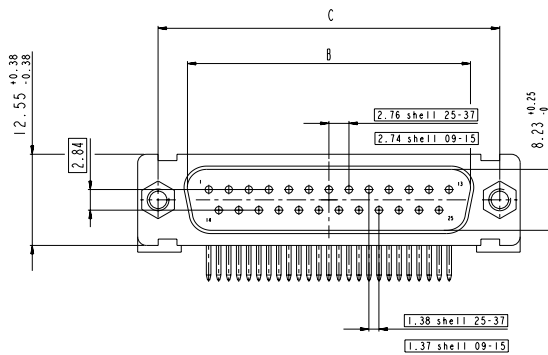
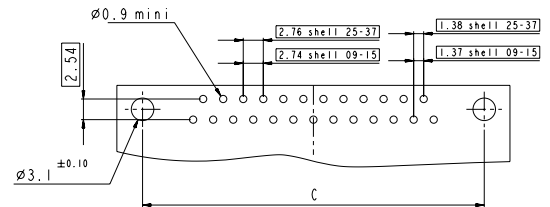
DIMENSION FOR SHELL E,A,B,C WITH METAL BRACKET

Dimensions are in millimeters

Shell size	Number of contacts	A $\begin{smallmatrix} +0.76 \\ -0 \end{smallmatrix}$	B $\begin{smallmatrix} +0.25 \\ -0 \end{smallmatrix}$	C ± 0.12	F $\begin{smallmatrix} +0.57 \\ -0 \end{smallmatrix}$	G $\begin{smallmatrix} +0.25 \\ -0 \end{smallmatrix}$	H $\begin{smallmatrix} +0.51 \\ -0 \end{smallmatrix}$	L $\begin{smallmatrix} +0.22 \\ -0 \end{smallmatrix}$
E	09	30.43	16.79	24.99	10.47	5.9 $\begin{smallmatrix} +0.15 \\ -0 \end{smallmatrix}$	19.02	0.80
A	15	38.76	25.12	33.32	10.47	5.9 $\begin{smallmatrix} +0.15 \\ -0 \end{smallmatrix}$	27.25	0.80
B	25	52.65	38.84	47.04	10.43	5.7 $\begin{smallmatrix} +0.25 \\ -0 \end{smallmatrix}$	41.02	0.80
C	37	68.94	55.30	63.50	10.56	5.7 $\begin{smallmatrix} +0.25 \\ -0 \end{smallmatrix}$	57.45	0.90



LAYOUT DIMENSIONS



SCALE: 3

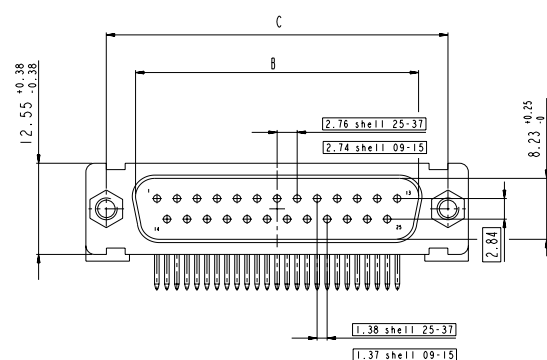
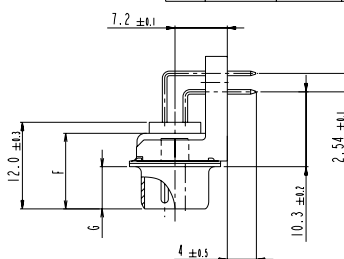
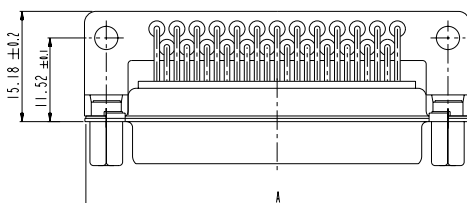
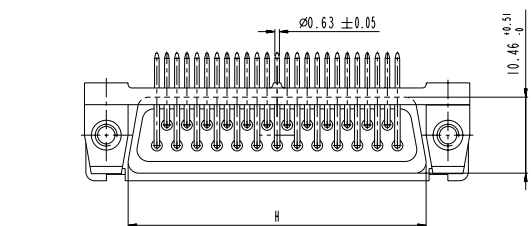
www.fciconnect.com		surface \checkmark tolerance std		projection		mm	
150-1902		150-400		150-1100			
TOLERANCES UNLESS OTHERWISE SPECIFIED							
Dr	M. PESSON	2006/11/14	ANGULAR	0.2	0.3	size	A2
Eng	P. LEGARE	2006/11/14	LINEAR	0.1	0.1	scale	2:1
Chr	P. LEGARE	2006/11/14	0.1	0.1	0.05	ECN	LS08-0014
Appr	P. LEGARE	2006/11/14	Product family	Spec. ref.			
SUB MALE DM HE508 series			C01-8637-1744		Rev.		
with right angle contact			CUSTOMER		sheet 5 of 9		

Contact us: sales@integrated-circuit.com Website: www.integrated-circuit.com

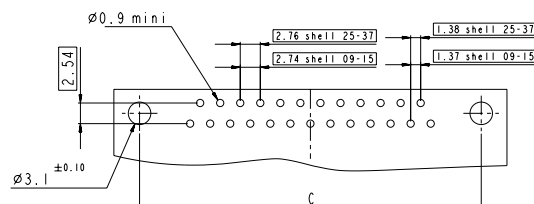
DIMENSION FOR SHELL E,A,B,C WITH PLASTIC BRACKET

Dimensions are in millimeters

Shell size	Number of contacts	A $+0.76$ -0	B $+0.25$ -0	C ± 0.12	F $+0.57$ -0	G $+0.25$ -0	H $+0.51$ -0	L $+0.22$ -0
E	09	30.43	16.79	24.99	10.47	5.9 $+0.15$ -0	19.02	0.80
A	15	38.76	25.12	33.32	10.47	5.9 $+0.15$ -0	27.25	0.80
B	25	52.65	38.84	47.04	10.43	5.7 $+0.25$ -0	41.02	0.80
C	37	68.94	55.30	63.50	10.56	5.7 $+0.25$ -0	57.45	0.90

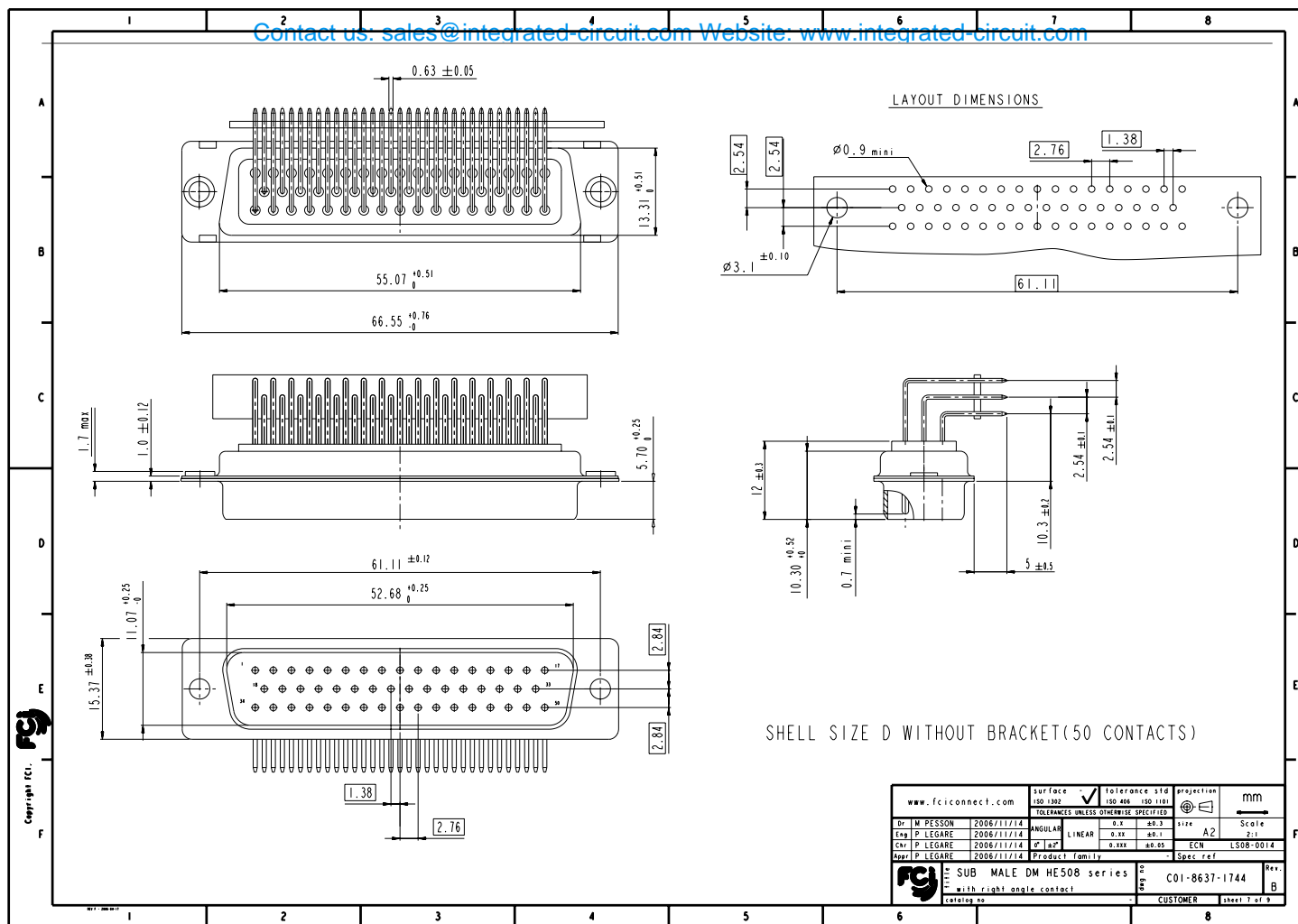


LAYOUT DIMENSIONS

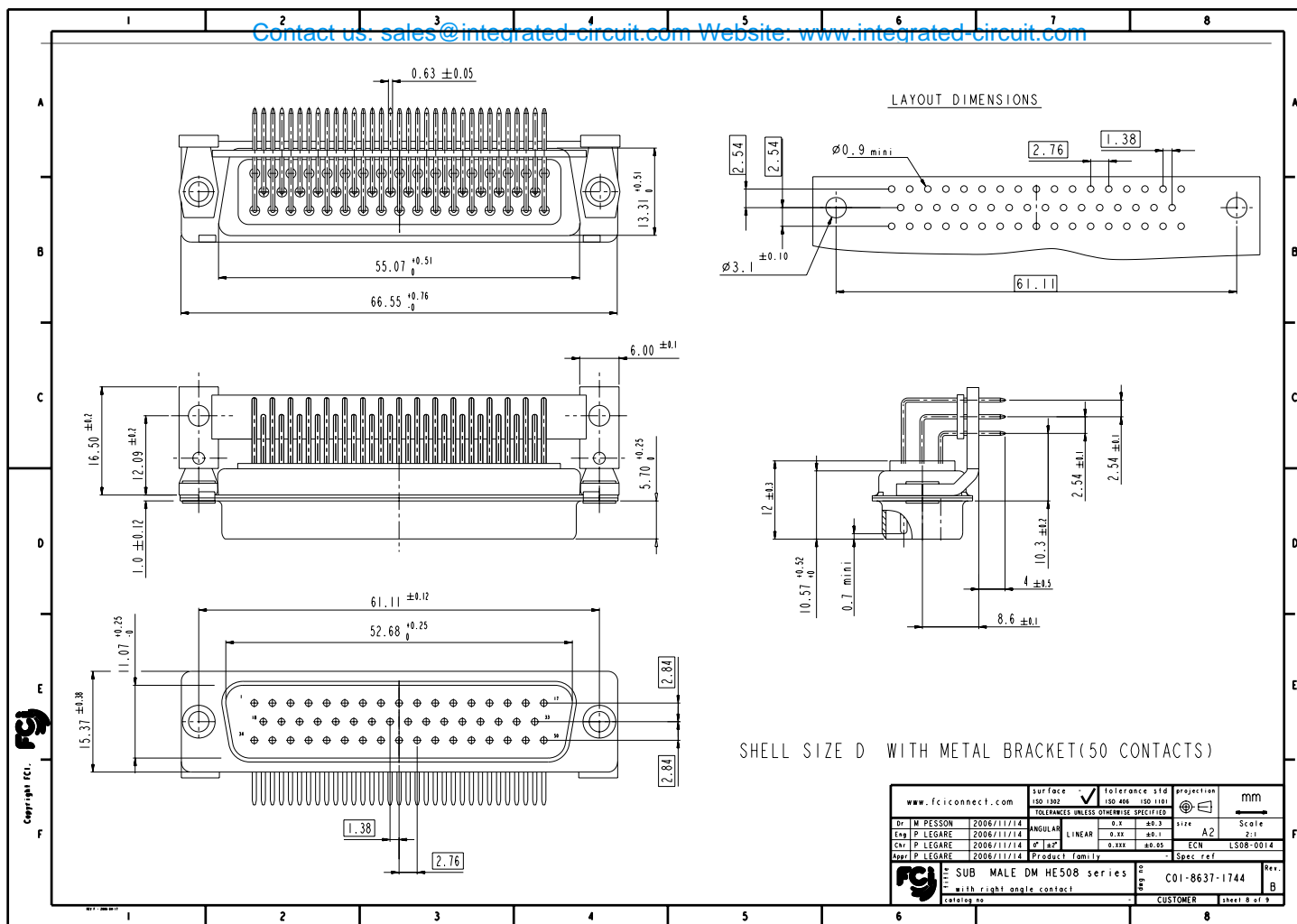


www.fciconnect.com		surface	150-180	150-180	150-180	tolerance std	projection	mm
Dr M PESSON		2006/11/14	ANGULAR	0.1	0.1	0.1	size	Scale
Eng P LEGARE		2006/11/14	LINEAR	0.1	0.1	0.1	A2	2:1
Cdr P LEGARE		2006/11/14	0.1	0.1	0.1	0.1	ECN	LS08-0014
Appr P LEGARE		2006/11/14	Product family	0.1	0.1	0.1	Spec ref	
SUB MALE DM HE508 series		0.1	0.1	0.1	0.1	0.1	C01-8637-1744	Rev.
with right angle contact		0.1	0.1	0.1	0.1	0.1	CUSTOMER	sheet 6 of 9

Contact us: sales@integrated-circuit.com Website: www.integrated-circuit.com



Contact us: sales@integrated-circuit.com Website: www.integrated-circuit.com



Contact us: sales@integrated-circuit.com Website: www.integrated-circuit.com

