

Excellent Integrated System Limited

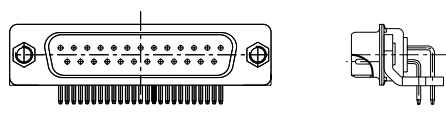
Stocking Distributor

Click to view price, real time Inventory, Delivery & Lifecycle Information:

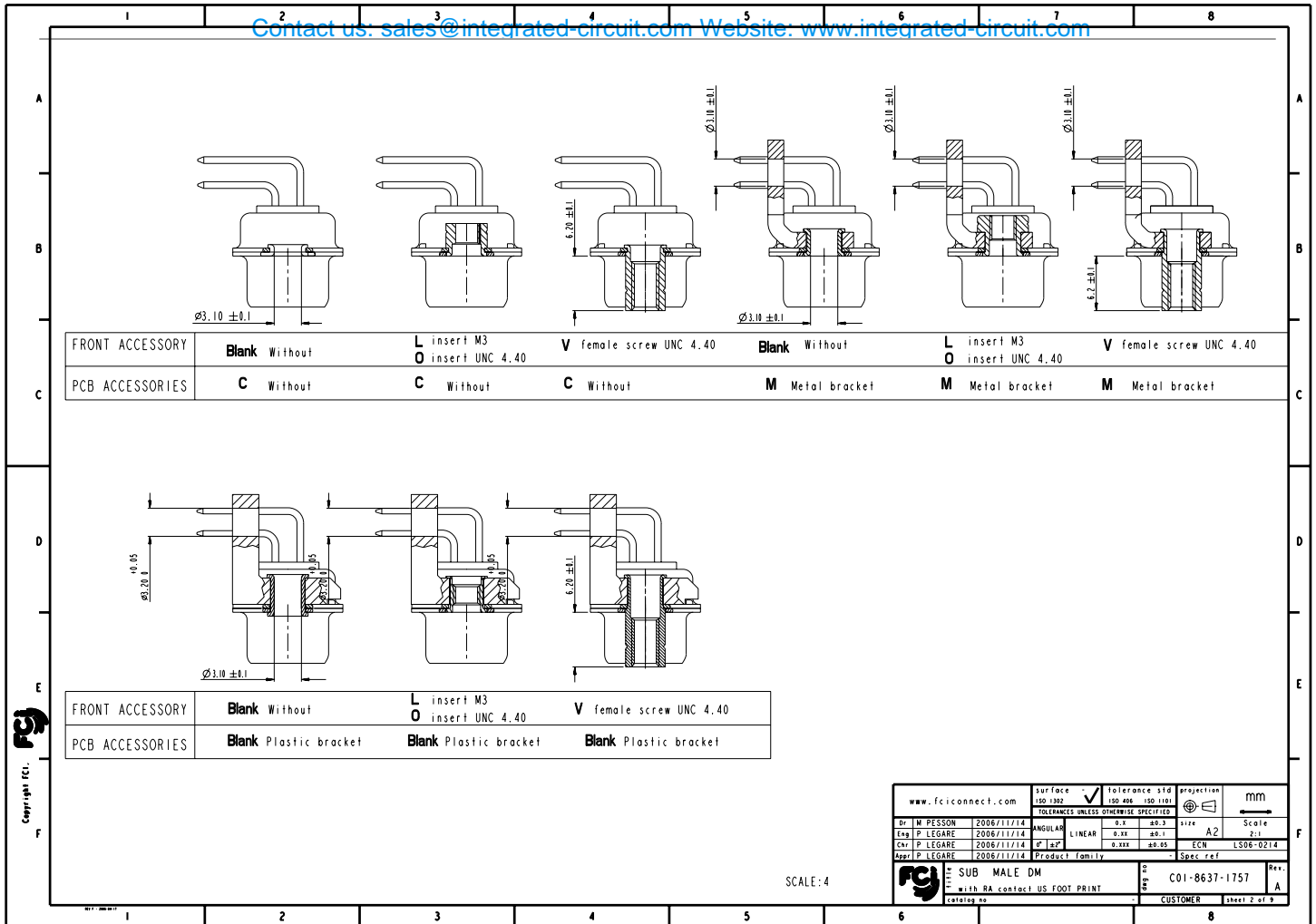
[FCI](#)
[DAM15P743](#)

For any questions, you can email us directly:

sales@integrated-circuit.com

	1	2	3	4	5	6	7	8																																																																																				
A	REFERENCE SPECIFICATIONS			<p>Series DBML25P700M</p> <p>Shell size: E A B C D (see sheet 3)</p> <p>Front accessory definition (see sheet 2)</p> <p>Blank :without accessory L :threaded insert M3 O :threaded insert UNC 4-40 V :female screw UNC 4-40</p> <p>Layout of contacts (see sheet 3) 9,15,25,37,50</p> <p>Contacts P :Pin</p> <p>Termination type 7 Right angle/US foot print</p> <p>Plating 00 Right angle 500 matings/unmatings 43 Right angle 500 matings/unmatings for harsh environment</p> <p>PCB accessories definition(see sheet 2) Blank :Plastic brackets C :Without brackets M :Metal brackets</p>																																																																																								
	MIL-DTL-24308 FOR DIMENSIONS																																																																																											
	NFC-93425 FOR CHARACTERISTICS																																																																																											
	PHYSICAL CHARACTERISTICS																																																																																											
	<p>-INSULATOR MATERIAL: THERMOPLASTIC UL94V0</p> <p>-CONTACT MATERIAL: BRASS, GOLD OVER NICKEL</p> <p>-ACCESSORIES: STEEL FOR METAL BRACKETS, cadmium plated yellow passivation THERMOPLASTIC UL94V0 FOR PLASTIC BRACKETS</p> <p>BRASS FOR OTHERS ACCESSORIES, cadmium plated yellow passivation</p> <p>-SHELLS: STEEL, cadmium plated yellow passivation</p>																																																																																											
B	ELECTRICAL CHARACTERISTICS																																																																																											
	<p>-NOMINAL CURRENT: 7.5A</p> <p>-CONTACT RESISTANCE: <7.3 m Ohms</p> <p>-CONTACT/CONTACT : >=1000 V</p> <p>-CONTACT/GROUND : >=1200 V</p> <p>-INSULATION RESISTANCE: >=5000 MOhms</p>																																																																																											
	ENVIRONMENTAL CHARACTERISTICS																																																																																											
	<p>- CLIMATIC CATEGORY: 55/125/56</p> <p>TEMPERATURE RANGE -55°C to +125°C</p> <p>DAMP HEAT STEADY STATE 56 DAYS</p> <p>SALT SPRAY 48 HOURS</p>																																																																																											
	MECHANICAL CHARACTERISTICS																																																																																											
C	RETENTION AGAINST TORQUE: -Threaded insert:0.7 N.m min -Female screw:0.5 N.m min																																																																																											
D				<p>25 WAY for Example</p>  <table border="1"> <thead> <tr> <th colspan="4">www.fciconnect.com</th> <th colspan="2">surface</th> <th colspan="2">tolerance std</th> <th colspan="2">projection</th> <th colspan="2">mm</th> </tr> <tr> <th colspan="4">TOLERANCES UNLESS OTHERWISE SPECIFIED</th> <th>150-192</th> <th>✓</th> <th>150-400</th> <th>150-1100</th> <th>mm</th> <th>mm</th> <th>mm</th> <th>mm</th> </tr> </thead> <tbody> <tr> <td>Dr</td> <td>M. PESSON</td> <td>2006/11/14</td> <td>ANGULAR</td> <td>LINEAR</td> <td>0.2</td> <td>0.3</td> <td>size</td> <td>A2</td> <td>Scale</td> <td>2:1</td> <td></td> </tr> <tr> <td>Eng</td> <td>P. LEGARE</td> <td>2006/11/14</td> <td>0.15</td> <td>0.2</td> <td>0.25</td> <td>0.3</td> <td>ECN</td> <td>LS06-0214</td> <td></td> <td></td> <td></td> </tr> <tr> <td>Rev</td> <td>P. LEGARE</td> <td>2006/11/14</td> <td>Product family</td> <td></td> <td></td> <td></td> <td>Spec ref</td> <td></td> <td></td> <td></td> <td></td> </tr> <tr> <td colspan="4">SUB MALE DM</td> <td colspan="2">with RA contact US FOOT PRINT</td> <td colspan="2">C01-8637-1757</td> <td colspan="2">Rev.</td> <td colspan="2">A</td> </tr> <tr> <td colspan="4">drawing no</td> <td colspan="2">CUSTOMER</td> <td colspan="2">sheet 1 of 9</td> <td colspan="4"></td> </tr> </tbody> </table>					www.fciconnect.com				surface		tolerance std		projection		mm		TOLERANCES UNLESS OTHERWISE SPECIFIED				150-192	✓	150-400	150-1100	mm	mm	mm	mm	Dr	M. PESSON	2006/11/14	ANGULAR	LINEAR	0.2	0.3	size	A2	Scale	2:1		Eng	P. LEGARE	2006/11/14	0.15	0.2	0.25	0.3	ECN	LS06-0214				Rev	P. LEGARE	2006/11/14	Product family				Spec ref					SUB MALE DM				with RA contact US FOOT PRINT		C01-8637-1757		Rev.		A		drawing no				CUSTOMER		sheet 1 of 9					
	www.fciconnect.com								surface		tolerance std		projection		mm																																																																													
	TOLERANCES UNLESS OTHERWISE SPECIFIED								150-192	✓	150-400	150-1100	mm	mm	mm	mm																																																																												
	Dr	M. PESSON	2006/11/14						ANGULAR	LINEAR	0.2	0.3	size	A2	Scale	2:1																																																																												
	Eng	P. LEGARE	2006/11/14						0.15	0.2	0.25	0.3	ECN	LS06-0214																																																																														
Rev	P. LEGARE	2006/11/14	Product family				Spec ref																																																																																					
SUB MALE DM				with RA contact US FOOT PRINT		C01-8637-1757		Rev.		A																																																																																		
drawing no				CUSTOMER		sheet 1 of 9																																																																																						
E																																																																																												
F																																																																																												

Contact us: sales@integrated-circuit.com Website: www.integrated-circuit.com



Contact us: sales@integrated-circuit.com Website: www.integrated-circuit.com

PART NUMBER	FRONT ACCESSORY	PCB ACCESSORY
D*MxxP700C	without	without
D*MLxxP700C	insert M3	without
D*MOxxP700C	insert UNC 4.40	without
D*MVxxP700C	female screw UNC 4.40	without
D*MxxP700M	without	Metal bracket
D*MLxxP700M	insert M3	Metal bracket
D*MOxxP700M	insert UNC 4.40	Metal bracket
D*MVxxP700M	female screw UNC 4.40	Metal bracket
D*MxxP700	without	Plastic bracket
D*MLxxP700	insert M3	Plastic bracket
D*MOxxP700	insert UNC 4.40	Plastic bracket
D*MVxxP700	female screw UNC 4.40	Plastic bracket

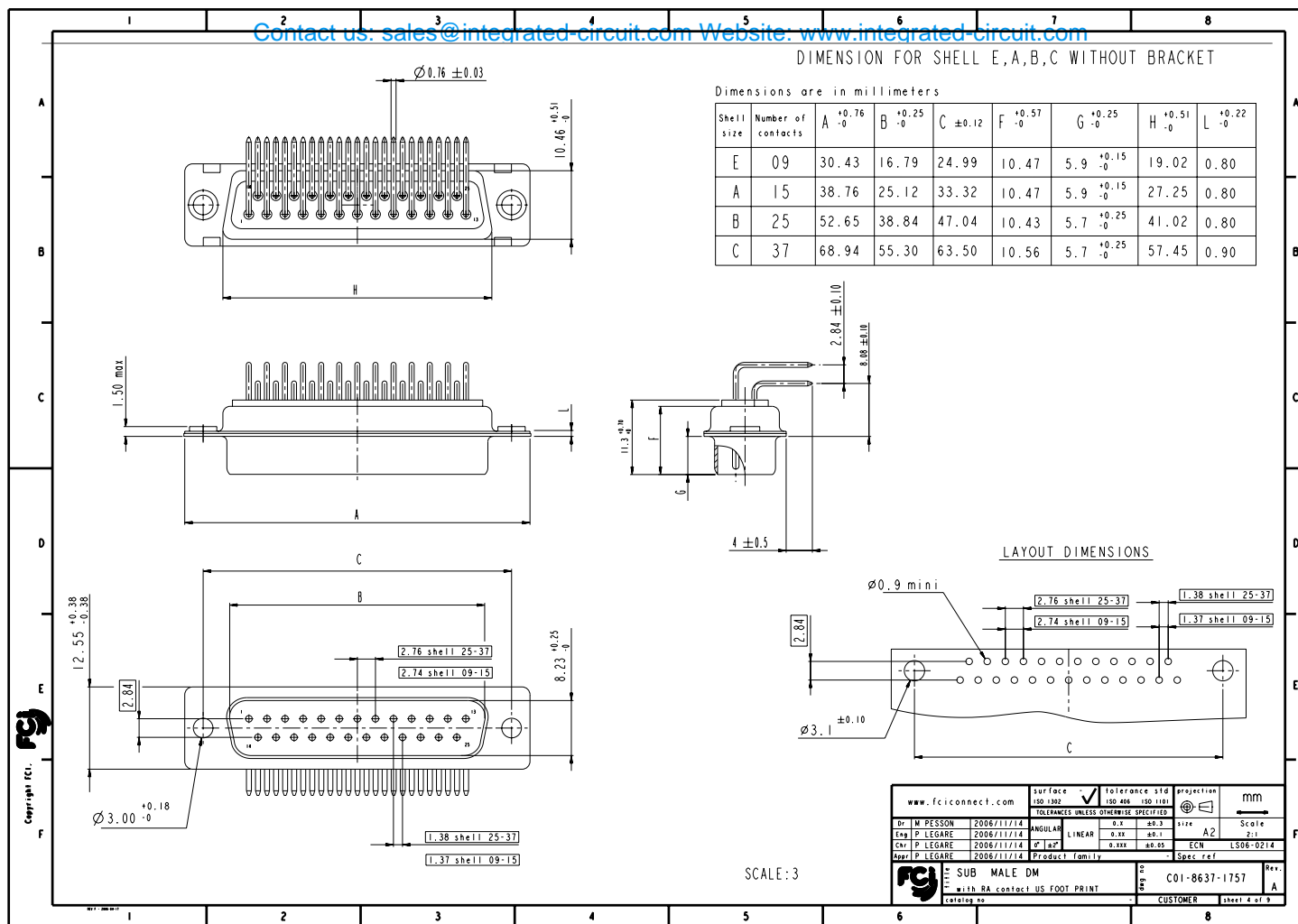
shell size	Contact number
#	XX
E	09
A	15
B	25
C	37
D	50

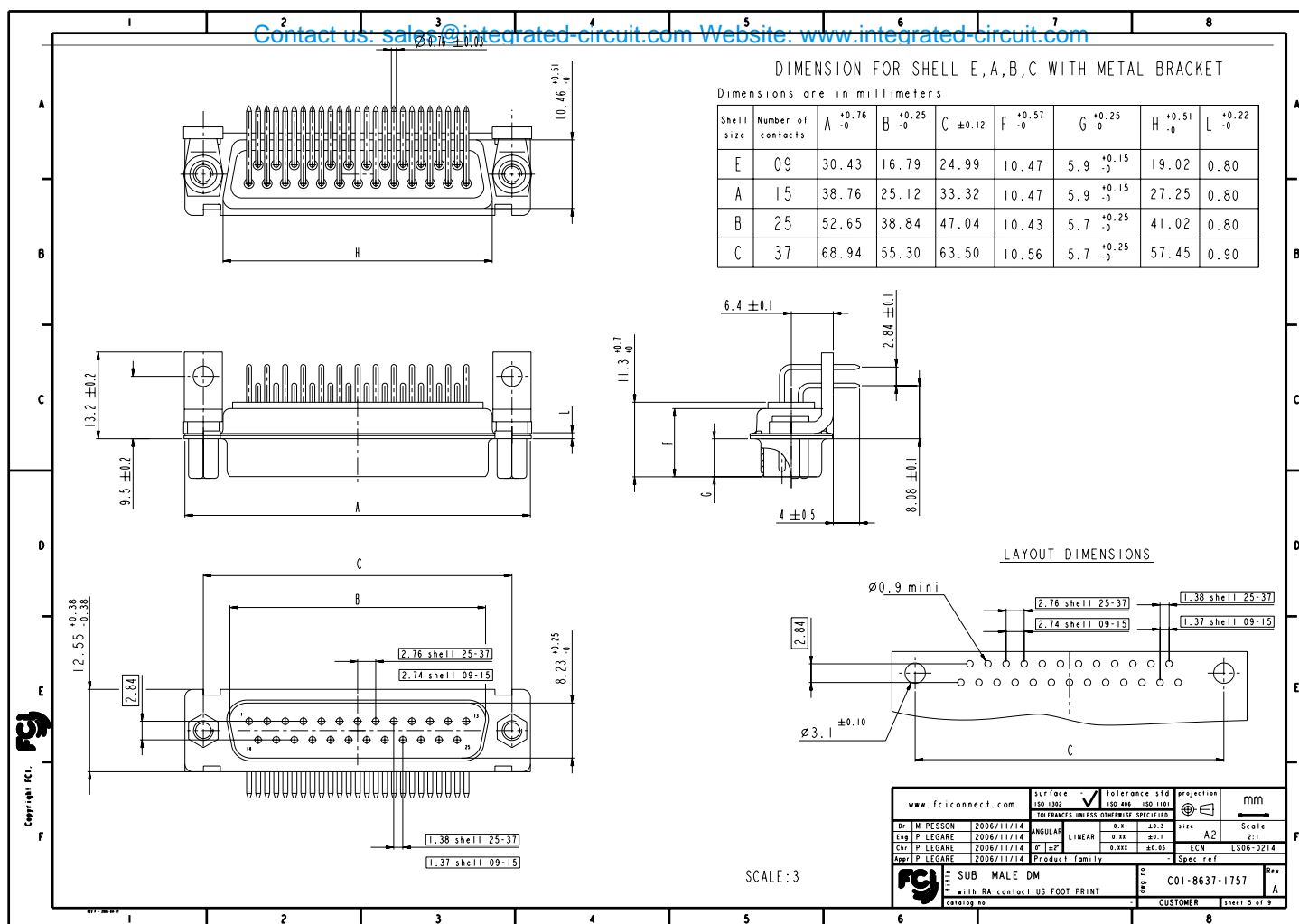
PART NUMBER	FRONT ACCESSORY	PCB ACCESSORY
D*MxxP743C	without	without
D*MLxxP743C	insert M3	without
D*MOxxP743C	insert UNC 4.40	without
D*MVxxP743C	female screw UNC 4.40	without
D*MxxP743M	without	Metal bracket
D*MLxxP743M	insert M3	Metal bracket
D*MOxxP743M	insert UNC 4.40	Metal bracket
D*MVxxP743M	female screw UNC 4.40	Metal bracket
D*MxxP743	without	Plastic bracket
D*MLxxP743	insert M3	Plastic bracket
D*MOxxP743	insert UNC 4.40	Plastic bracket
D*MVxxP743	female screw UNC 4.40	Plastic bracket

Copyright FCI

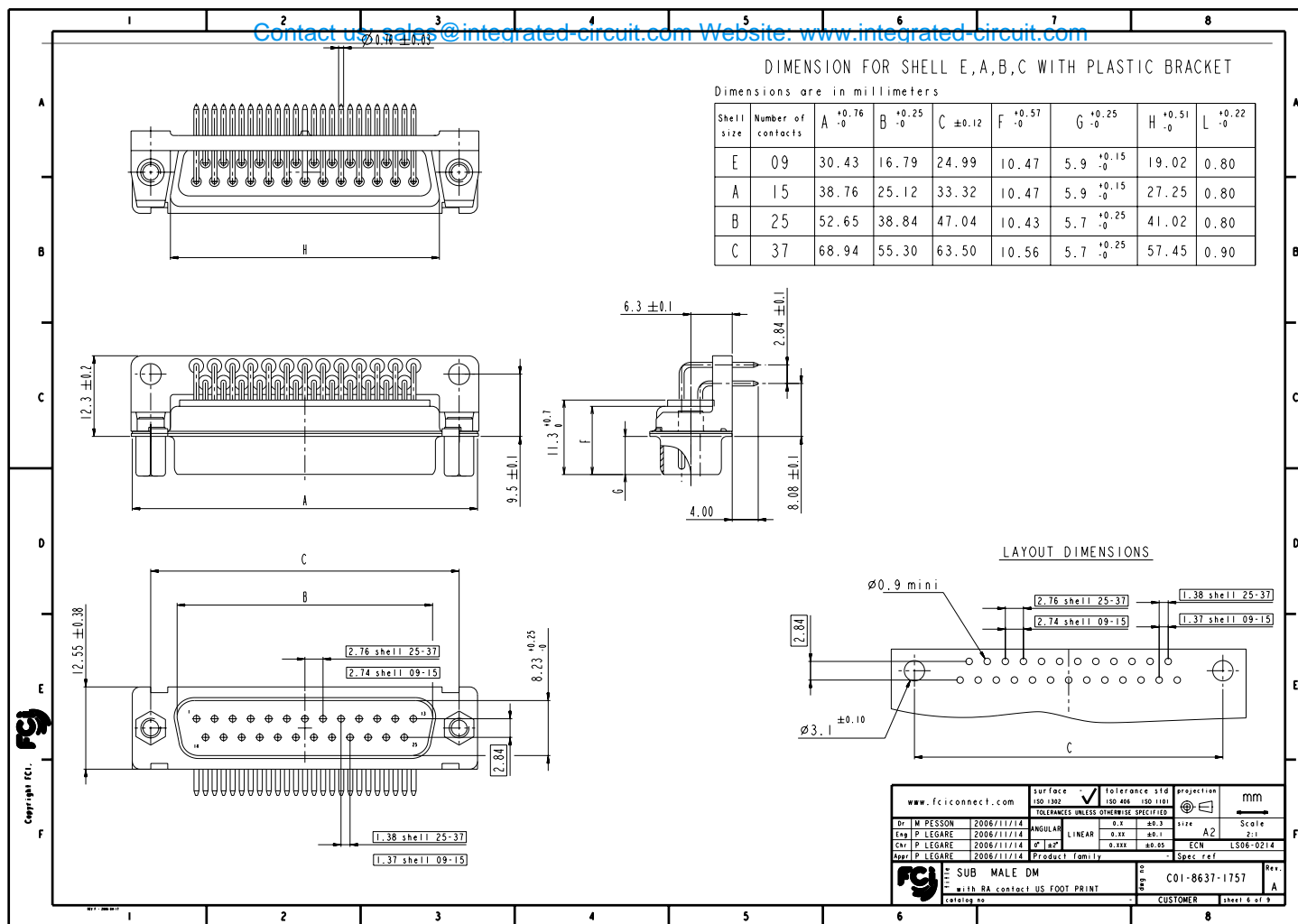
www.fciconnect.com		surface	tolerance std	projection	mm
		150-1902	150-400	150-1100	
		TOLERANCES UNLESS OTHERWISE SPECIFIED			
Dr	M. PESSON	2006/11/14	ANGULAR	0.2	0.3
Eng	P. LEGARE	2006/11/14	LINEAR	0.15	0.1
Chk	P. LEGARE	2006/11/14	0.15	0.15	0.05
Appr	P. LEGARE	2006/11/14	Product family	Spec. ref.	
SUB MALE DM		C01-8637-1757		Rev.	
with BA contact US FOOT PRINT		CUSTOMER		sheet 3 of 9	

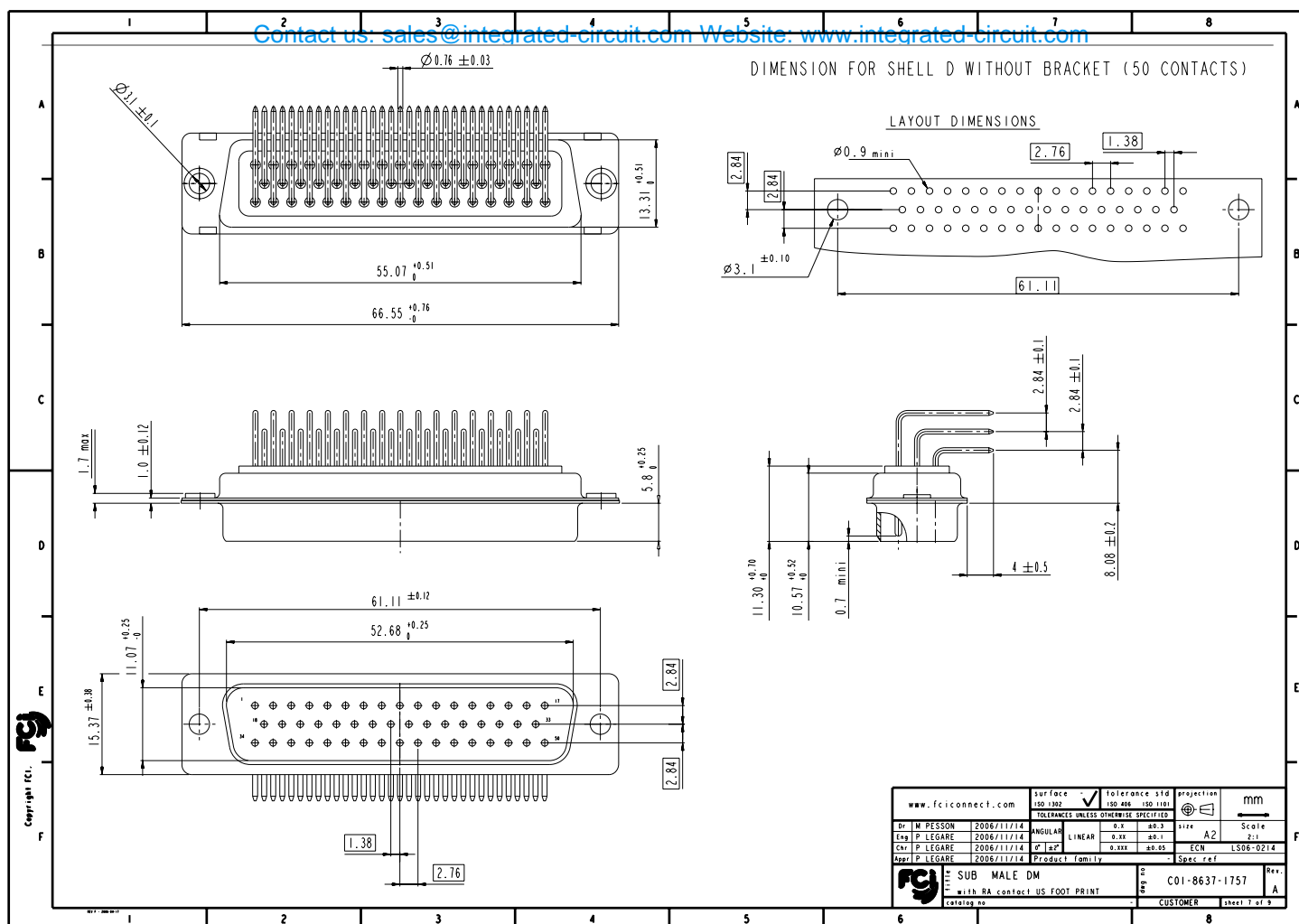
Contact us: sales@integrated-circuit.com Website: www.integrated-circuit.com





Contact us: sales@integrated-circuit.com Website: www.integrated-circuit.com





Contact us: sales@integrated-circuit.com Website: www.integrated-circuit.com

