



Distributor of Molex Connector Corporation: Excellent Integrated System Limited
Datasheet of 0009484034 - Connector Receptacle 3 Position 0.156" (3.96mm) Through Hole

Contact us: sales@integrated-circuit.com Website: www.integrated-circuit.com

Excellent Integrated System Limited

Stocking Distributor

Click to view price, real time Inventory, Delivery & Lifecycle Information:

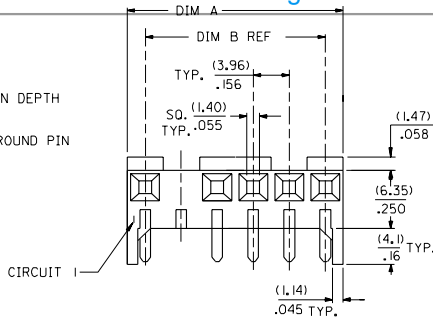
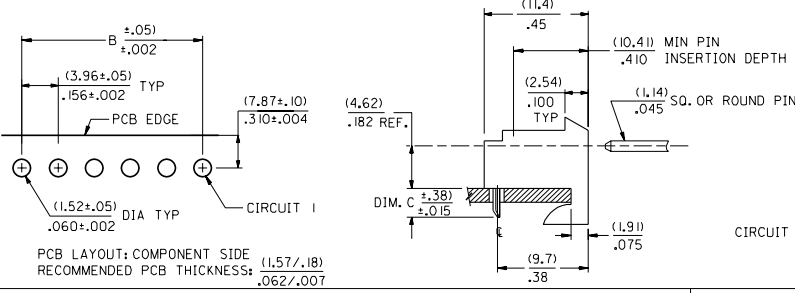
[Molex Connector Corporation](#)
[0009484034](#)

For any questions, you can email us directly:

sales@integrated-circuit.com

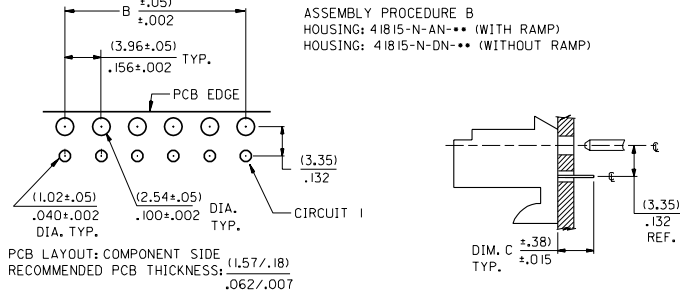
Contact us: sales@integrated-circuit.com Website: www.integrated-circuit.com

ASSEMBLY PROCEDURE A
 HOUSING: 41815-N-AN-**-** (WITH RAMP)
 HOUSING: 41815-N-DN-**-** (WITHOUT RAMP)

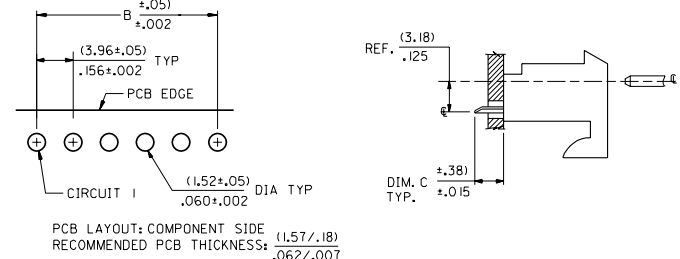


DIM. B	DIM. A	NO. OF CKTS
(3.96)	(7.82±.25)	2
.156	.308±.010	
(7.92)	(11.79±.25)	3
.312	.464±.010	
(11.89)	(15.75±.25)	4
.468	.620±.010	
(15.85)	(19.71±.25)	5
.624	.776±.010	
(19.81)	(23.67±.25)	6
.780	.932±.010	
(23.77)	(27.64±.30)	7
.936	1.088±.012	
(27.74)	(31.60±.25)	8
1.092	1.244±.012	
(31.70)	(35.56±.30)	9
1.248	1.400±.012	
(35.66)	(39.52±.30)	10
1.404	1.556±.012	
(39.62)	(43.48±.30)	11
1.560	1.712±.012	
(43.59)	(47.45±.30)	12
1.716	1.868±.012	
(47.55)	(51.41±.30)	13
1.872	2.024±.012	
(51.51)	(55.37±.36)	14
2.028	2.180±.014	
(55.47)	(59.33±.36)	15
2.184	2.336±.014	

ASSEMBLY PROCEDURE B
 HOUSING: 41815-N-AN-**-** (WITH RAMP)
 HOUSING: 41815-N-DN-**-** (WITHOUT RAMP)

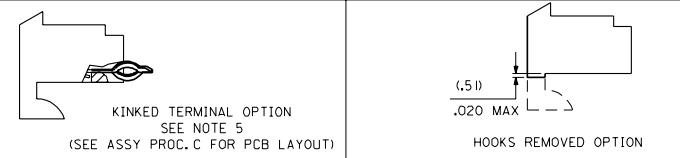


ASSEMBLY PROCEDURE C
 HOUSING: 41815-N-AN-**-** (WITH RAMP)
 HOUSING: 41815-N-DN-**-** (WITHOUT RAMP)



NOTES:

2. SOLDERABILITY: WHEN PARTS ARE SOLDERED AT A TEMPERATURE OF 230°C OR 446°F FOR 5 SECONDS EACH SOLDERED SURFACE SHALL BE A MINIMUM OF 95% COVERED WITH A SMOOTH CONTINUOUS ADHERENT COATING. FOR ADDITIONAL INFORMATION SEE ES-152.
3. MATERIAL: HOUSING: POLYESTER, 94V-0 COLOR NATURAL (WHITE)
5. SEE SMES-42329-*** FOR KINK PIN INFORMATION.
6. PRODUCT SPECIFICATION: PS-08-50
7. PARTS ARE STACKABLE END TO END ON (3.96)/.156 ⌀
8. FOR TOP ENTRY AND RIGHT ANGLE ASSEMBLIES WITH LOWER INSERTION FORCE USE SINGLE BEAM CONTACT. (TERMINAL NO. 4244)



REL 0551 UCR2000-0200		DIMENSIONS SHOWN METRIC INCH UNLESS OTHERWISE SPECIFIED TOLERANCES IN MILLIMETERS		REVISE ONLY ON CAD SYSTEM	
9-13-99 SAMIEC		3 PLACE ± INCH METRIC		TITLE (3.96)/.156 ⌀ PC BOARD CONNECTOR ASSEMBLY	
RENO. FOR 5AP UCR1998-0502 99-12-15 SAMIEC		1 PLACE # #		DATE 1 OF 7 01/28/87	
REL -NC 102-0028 UCR1998-0103 98-3-24 SAMIEC		2 PLACE # #		MOLEX INCORPORATED	
		1 PLACE # #		PART NO. SDA-41815	
		DRAWING THESE APPLICABLE MUST REMAIN WITHIN DIMENSIONS		DRAWING NO. SDA-41815	
DRWG: SAMIEC		CHKD: PATEL		FILE NAME S41815X1	
APP'D: LENZ		SCALE: 1		THIS DRAWING CONTAINS INFORMATION THAT IS PROPRIETARY TO MOLEX INC. AND SHOULD NOT BE USED WITHOUT WRITTEN PERMISSION.	
LTR.	REVISIONS	LTR.	REVISIONS	DATE	FILE

7	AH1
6	AH
5	AH
4	AH
3	AH
2	AH
1	AH1

MFG. SKL. REV.

	13	12	11	10	9	8	7	6	4	3	2	1																																																																																					
J	ENG. NO.	HOUSING NO.	HOUSING TYPE	TERMINAL NO.	TERM. MAT'L	ASSEMBLY PROCEDURE	DIM. C	VOID LOC.	PACKING	KINKED TERMINAL	HOOKS REMOVED																																																																																						
	A-41815-0212/0225	41815-N-AN	WITH RAMPS	2144-BA-A1AA122B	PHOS BRONZE	A: SIDE ENTRY	(3.68) / .145	NONE	BULK	NO	NO																																																																																						
	A-41815-0226/0240	41815-N-AN	WITH RAMPS	2188-11587	BRASS	B: BOTTOM ENTRY	(3.18) / .125	2,4	BULK	NO	NO																																																																																						
	A-41815-0242/0254	41815-N-AN	WITH RAMPS	2188-11587	BRASS	B: BOTTOM ENTRY	(3.18) / .125	3	BULK	NO	NO																																																																																						
	A-41815-0255/0270	41815-N-AN	WITH RAMPS	2144-BA-A1AA122B	PHOS BRONZE	C: TOP ENTRY	(3.05) / .120	NONE	BULK	NO	NO																																																																																						
I	A-41815-0271/0284	41815-N-AN	WITH RAMPS	6298-1122	PHOS BRONZE	B: BOTTOM ENTRY	(4.06) / .160	NONE	BULK	NO	NO																																																																																						
	A-41815-0299/0312	41815-N-AN	WITH RAMPS	2144-AA-A2AA102B	BRASS	C: TOP ENTRY	(4.80) / .189	NONE	BULK	NO	YES																																																																																						
	A-41815-0313/0326	41815-N-AN	WITH RAMPS	2144-AA-A1AA-563B	BRASS	A: SIDE ENTRY	(3.68) / .145	NONE	BULK	NO	NO																																																																																						
H	A-41815-0212/0225			A-41815-0226/0240			A-41815-0242/0254			A-41815-0255/0270																																																																																							
	PART NO.	ENG. NO.	CKT	PART NO.	ENG. NO.	CKT	PART NO.	ENG. NO.	CKT	PART NO.	ENG. NO.	CKT																																																																																					
		A-41815-0212	2		A-41815-0226	2		A-41815-0242	2		09-48-4024	A-41815-0255	2																																																																																				
		A-41815-0213	3		A-41815-0227	3	S	09-48-5032	A-41815-0243	3		09-48-4034	A-41815-0256	3																																																																																			
		A-41815-0214	4		A-41815-0228	4			A-41815-0244	4		09-48-4044	A-41815-0257	4																																																																																			
		A-41815-0215	5	S	09-48-5051	A-41815-0229	5		A-41815-0245	5		09-48-4054	A-41815-0258	5																																																																																			
		A-41815-0216	6		A-41815-0230	6			A-41815-0246	6		09-48-4064	A-41815-0259	6																																																																																			
		A-41815-0217	7		A-41815-0231	7			A-41815-0247	7		09-48-4074	A-41815-0260	7																																																																																			
		A-41815-0218	8		A-41815-0232	8			A-41815-0248	8		09-48-4084	A-41815-0261	8																																																																																			
		A-41815-0219	9		A-41815-0233	9			A-41815-0249	9		09-48-4094	A-41815-0262	9																																																																																			
		A-41815-0220	10		A-41815-0234	10			A-41815-0250	10		09-48-4104	A-41815-0263	10																																																																																			
		A-41815-0221	11		A-41815-0235	11			A-41815-0251	11		09-48-4114	A-41815-0265	11																																																																																			
		A-41815-0222	12		A-41815-0236	12			A-41815-0252	12		09-48-4124	A-41815-0266	12																																																																																			
		A-41815-0223	13		A-41815-0237	13			A-41815-0253	13		09-48-4134	A-41815-0267	13																																																																																			
		A-41815-0224	14		A-41815-0239	14			A-41815-0254	14		09-48-4144	A-41815-0269	14																																																																																			
	A-41815-0225	15		A-41815-0240	15				15		09-48-4154	A-41815-0270	15																																																																																				
	WAS	A-41815-NA122-0011		WAS	A-41815-NB587-0012		WAS	A-41815-NB587-0013		WAS	A-41815-NC122-0011																																																																																						
G	A-41815-0271/0284						A-41815-0299/0312			A-41815-0313/0326																																																																																							
	PART NO.	ENG. NO.	CKT	PART NO.	ENG. NO.	CKT	PART NO.	ENG. NO.	CKT	PART NO.	ENG. NO.	CKT																																																																																					
		A-41815-0271	2			2		09-48-4026	A-41815-0299	2		09-48-5023	A-41815-0313	2																																																																																			
		A-41815-0272	3			3		09-48-4036	A-41815-0300	3		09-48-5033	A-41815-0314	3																																																																																			
		A-41815-0273	4			4		09-48-4046	A-41815-0301	4		09-48-5043	A-41815-0315	4																																																																																			
		A-41815-0274	5			5		09-48-4056	A-41815-0302	5		09-48-5053	A-41815-0316	5																																																																																			
		A-41815-0275	6			6		09-48-4066	A-41815-0303	6		09-48-5063	A-41815-0317	6																																																																																			
		A-41815-0276	7			7		09-48-4076	A-41815-0304	7		09-48-5073	A-41815-0318	7																																																																																			
		A-41815-0277	8			8		09-48-4086	A-41815-0305	8		09-48-5083	A-41815-0319	8																																																																																			
		A-41815-0278	9			9		09-48-4096	A-41815-0306	9		09-48-5093	A-41815-0320	9																																																																																			
		A-41815-0279	10			10		09-48-4106	A-41815-0307	10		09-48-5103	A-41815-0321	10																																																																																			
		A-41815-0281	11			11		09-48-4116	A-41815-0308	11		09-48-5113	A-41815-0322	11																																																																																			
		A-41815-0282	12			12		09-48-4126	A-41815-0309	12		09-48-5123	A-41815-0323	12																																																																																			
		A-41815-0283	13			13		09-48-4136	A-41815-0310	13		09-48-5133	A-41815-0324	13																																																																																			
		A-41815-0284	14			14		09-48-4146	A-41815-0311	14		09-48-5143	A-41815-0325	14																																																																																			
		15			15		09-48-4156	A-41815-0312	15		09-48-5153	A-41815-0326	15																																																																																				
	WAS	A-41815-NB122-0008					WAS	A-41815-NC102-0015		WAS	A-41815-NA563-0001																																																																																						
D	A-41815-0299/0312						A-41815-0313/0326																																																																																										
	PART NO.	ENG. NO.	CKT	PART NO.	ENG. NO.	CKT	PART NO.	ENG. NO.	CKT	PART NO.	ENG. NO.	CKT																																																																																					
		A-41815-0299	2			2		09-48-5023	A-41815-0313	2																																																																																							
		A-41815-0300	3			3		09-48-5033	A-41815-0314	3																																																																																							
		A-41815-0301	4			4		09-48-5043	A-41815-0315	4																																																																																							
C	A-41815-0313/0326																																																																																																
	PART NO.	ENG. NO.	CKT	PART NO.	ENG. NO.	CKT	PART NO.	ENG. NO.	CKT	PART NO.	ENG. NO.	CKT																																																																																					
		A-41815-0313	2			2																																																																																											
		A-41815-0314	3			3																																																																																											
		A-41815-0315	4			4																																																																																											
B	A-41815-0313/0326																																																																																																
	PART NO.	ENG. NO.	CKT	PART NO.	ENG. NO.	CKT	PART NO.	ENG. NO.	CKT	PART NO.	ENG. NO.	CKT																																																																																					
		A-41815-0313	2			2																																																																																											
		A-41815-0314	3			3																																																																																											
		A-41815-0315	4			4																																																																																											
A	A-41815-0313/0326																																																																																																
	PART NO.	ENG. NO.	CKT	PART NO.	ENG. NO.	CKT	PART NO.	ENG. NO.	CKT	PART NO.	ENG. NO.	CKT																																																																																					
		A-41815-0313	2			2																																																																																											
		A-41815-0314	3			3																																																																																											
		A-41815-0315	4			4																																																																																											
<table border="1"> <tr> <td>SEE SHEET I</td> <td>SEE SHEET I</td> <td>SEE SHEET I</td> <td>SEE SHEET I</td> <td>SEE SHEET I</td> <td>SEE SHEET I</td> <td>SEE SHEET I</td> <td>SEE SHEET I</td> <td>SEE SHEET I</td> <td>SEE SHEET I</td> <td>SEE SHEET I</td> <td>SEE SHEET I</td> <td>SEE SHEET I</td> </tr> <tr> <td>SEE SHEET I</td> <td>SEE SHEET I</td> <td>SEE SHEET I</td> <td>SEE SHEET I</td> <td>SEE SHEET I</td> <td>SEE SHEET I</td> <td>SEE SHEET I</td> <td>SEE SHEET I</td> <td>SEE SHEET I</td> <td>SEE SHEET I</td> <td>SEE SHEET I</td> <td>SEE SHEET I</td> <td>SEE SHEET I</td> </tr> <tr> <td>SEE SHEET I</td> <td>SEE SHEET I</td> <td>SEE SHEET I</td> <td>SEE SHEET I</td> <td>SEE SHEET I</td> <td>SEE SHEET I</td> <td>SEE SHEET I</td> <td>SEE SHEET I</td> <td>SEE SHEET I</td> <td>SEE SHEET I</td> <td>SEE SHEET I</td> <td>SEE SHEET I</td> <td>SEE SHEET I</td> </tr> <tr> <td>SEE SHEET I</td> <td>SEE SHEET I</td> <td>SEE SHEET I</td> <td>SEE SHEET I</td> <td>SEE SHEET I</td> <td>SEE SHEET I</td> <td>SEE SHEET I</td> <td>SEE SHEET I</td> <td>SEE SHEET I</td> <td>SEE SHEET I</td> <td>SEE SHEET I</td> <td>SEE SHEET I</td> <td>SEE SHEET I</td> </tr> <tr> <td>SEE SHEET I</td> <td>SEE SHEET I</td> <td>SEE SHEET I</td> <td>SEE SHEET I</td> <td>SEE SHEET I</td> <td>SEE SHEET I</td> <td>SEE SHEET I</td> <td>SEE SHEET I</td> <td>SEE SHEET I</td> <td>SEE SHEET I</td> <td>SEE SHEET I</td> <td>SEE SHEET I</td> <td>SEE SHEET I</td> </tr> <tr> <td>LTR.</td> <td>REVISIONS</td> <td>LTR.</td> <td>REVISIONS</td> <td>LTR.</td> <td>REVISIONS</td> <td>LTR.</td> <td>REVISIONS</td> <td>LTR.</td> <td>REVISIONS</td> <td>LTR.</td> <td>REVISIONS</td> <td>LTR.</td> <td>REVISIONS</td> </tr> </table>													SEE SHEET I	SEE SHEET I	SEE SHEET I	SEE SHEET I	SEE SHEET I	SEE SHEET I	SEE SHEET I	SEE SHEET I	SEE SHEET I	SEE SHEET I	SEE SHEET I	SEE SHEET I	SEE SHEET I	SEE SHEET I	SEE SHEET I	SEE SHEET I	SEE SHEET I	SEE SHEET I	SEE SHEET I	SEE SHEET I	SEE SHEET I	SEE SHEET I	SEE SHEET I	SEE SHEET I	SEE SHEET I	SEE SHEET I	SEE SHEET I	SEE SHEET I	SEE SHEET I	SEE SHEET I	SEE SHEET I	SEE SHEET I	SEE SHEET I	SEE SHEET I	SEE SHEET I	SEE SHEET I	SEE SHEET I	SEE SHEET I	SEE SHEET I	SEE SHEET I	SEE SHEET I	SEE SHEET I	SEE SHEET I	SEE SHEET I	SEE SHEET I	SEE SHEET I	SEE SHEET I	SEE SHEET I	SEE SHEET I	SEE SHEET I	SEE SHEET I	SEE SHEET I	SEE SHEET I	SEE SHEET I	SEE SHEET I	SEE SHEET I	SEE SHEET I	SEE SHEET I	SEE SHEET I	SEE SHEET I	SEE SHEET I	SEE SHEET I	SEE SHEET I	SEE SHEET I	SEE SHEET I	LTR.	REVISIONS	LTR.	REVISIONS	LTR.	REVISIONS	LTR.	REVISIONS	LTR.	REVISIONS	LTR.	REVISIONS	LTR.	REVISIONS	DIMENSIONS SHOWN METRIC INCH UNLESS OTHERWISE SPECIFIED TOLERANCES ARE AS FOLLOWS: F. PLAC. ± .010 M. PLAC. ± .005 H. PLAC. ± .002 L. PLAC. ± .001		DRAFTING DEPARTMENT DATE: 01/29/87 FILE NO. 5418934 SCALE: 1:1 THIS DRAWING CONTAINS INFORMATION THAT IS PROPRIETARY TO MOLEX INC. AND SHOULD NOT BE USED WITHOUT MOLEX'S PERMISSION.		REVISE ONLY ON CAD SYSTEM TITLE: 13.961/.156 PC BOARD CONNECTOR ASSEMBLY 41815 SERIES DWG. MOLEX INCORPORATED SHEET NO. 4 DATE 01/29/87 SEE CHART SDA-41815	
SEE SHEET I	SEE SHEET I	SEE SHEET I	SEE SHEET I	SEE SHEET I	SEE SHEET I	SEE SHEET I	SEE SHEET I	SEE SHEET I	SEE SHEET I	SEE SHEET I	SEE SHEET I	SEE SHEET I																																																																																					
SEE SHEET I	SEE SHEET I	SEE SHEET I	SEE SHEET I	SEE SHEET I	SEE SHEET I	SEE SHEET I	SEE SHEET I	SEE SHEET I	SEE SHEET I	SEE SHEET I	SEE SHEET I	SEE SHEET I																																																																																					
SEE SHEET I	SEE SHEET I	SEE SHEET I	SEE SHEET I	SEE SHEET I	SEE SHEET I	SEE SHEET I	SEE SHEET I	SEE SHEET I	SEE SHEET I	SEE SHEET I	SEE SHEET I	SEE SHEET I																																																																																					
SEE SHEET I	SEE SHEET I	SEE SHEET I	SEE SHEET I	SEE SHEET I	SEE SHEET I	SEE SHEET I	SEE SHEET I	SEE SHEET I	SEE SHEET I	SEE SHEET I	SEE SHEET I	SEE SHEET I																																																																																					
SEE SHEET I	SEE SHEET I	SEE SHEET I	SEE SHEET I	SEE SHEET I	SEE SHEET I	SEE SHEET I	SEE SHEET I	SEE SHEET I	SEE SHEET I	SEE SHEET I	SEE SHEET I	SEE SHEET I																																																																																					
LTR.	REVISIONS	LTR.	REVISIONS	LTR.	REVISIONS	LTR.	REVISIONS	LTR.	REVISIONS	LTR.	REVISIONS	LTR.	REVISIONS																																																																																				