



Distributor of Molex Connector Corporation: Excellent Integrated System Limited
Datasheet of 0009521152 - Connector Receptacle, Bottom Entry 15 Position 0.156" (3.96mm)
Tin Through Hole

Contact us: sales@integrated-circuit.com Website: www.integrated-circuit.com

Excellent Integrated System Limited

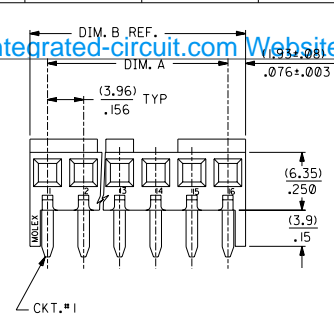
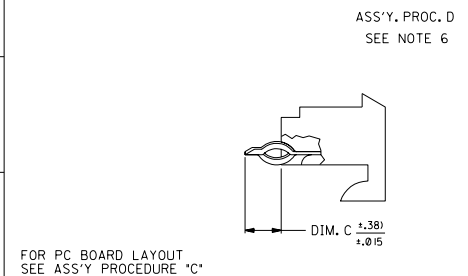
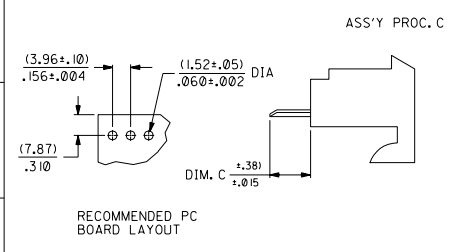
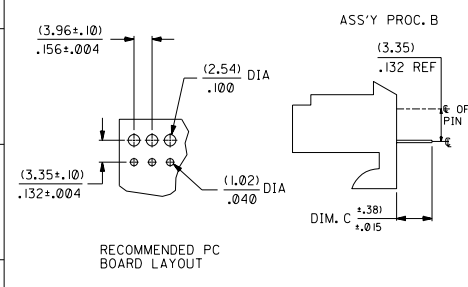
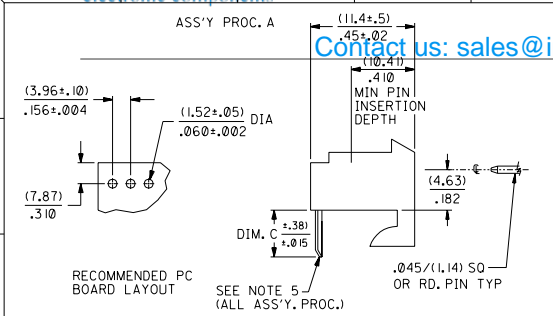
Stocking Distributor

Click to view price, real time Inventory, Delivery & Lifecycle Information:

[Molex Connector Corporation](#)
[0009521152](#)

For any questions, you can email us directly:
sales@integrated-circuit.com

Contact us: sales@integrated-circuit.com Website: www.integrated-circuit.com



- NOTES:
1. TERMINALS MUST CONFORM TO SOLDERABILITY SPEC. ES-152.
 2. PARTS CONFORM TO PRODUCT SPEC 08-50.
 3. HOUSING MATERIAL: NYLON, UL LISTED
 4. ** PRECEDING ENG. NO. IN CHARTS DESIGNATES STANDARD PRODUCT.
 5. TERMINAL TAIL CENTERLINES ARE TO BE WITHIN (.30)/.012 OF EACH OTHER.
 6. FOR KINKED PIN INFORMATION SEE SMES-42329-***.

A - 2145 - * * N * * * - *
 VOID LOCATION
 PACKAGING CODE
 BLANK=BULK PACK
 A=TUBE PACK PER PK-40873-0026

ASS'Y. PROCEDURE
 A=RIGHT ANGLE
 B=BOTTOM ENTRY
 C=TOP ENTRY
 D=TOP ENTRY WITH KINKED TAIL
 E=BOTTOM ENTRY WITH HOOKS CUT OFF
 F=TOP ENTRY WITH HOOKS CUT OFF

HOUSING NO.
 A=2145-N-AN
 94V-2 NATURAL WITH RAMPES AND HOOKS
 B=2145-NBK-AN
 94V-2 DYED BLACK WITH RAMPES AND HOOKS
 C=2145-A-AN
 94V-0 NATURAL WITH RAMPES AND HOOKS
 G=2145-N-CN
 94V-2 NATURAL WITH HOOKS ONLY
 H=2145-NGN-AN
 94V-2 DYED GREEN WITH RAMPES AND HOOKS
 J=2145-NYW-AN
 94V-2 DYED YELLOW WITH RAMPES AND HOOKS
 K=2145-NRD-AN
 94V-2 DYED RED WITH RAMPES AND HOOKS
 L=2145-N-AN-5
 94V-2 NATURAL W/ RAMPES AND HOOKS MOLDED IN VOIDS

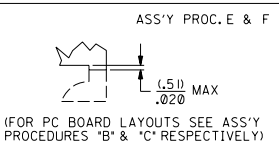
PLATING
 (102) 200 M.I. MIN TIN OVER 100 M.I. MIN COPPER
 (587) SELECT GOLD 15 M.I. MIN
 SELECT TIN-LEAD 75 M.I. MIN. OVER 50 M.I. MIN NICKEL

TERMINAL NO.
 A=2144-AA-AIAA(+B) (BRASS)
 B=2144-BA-AIAA(+B) (PHOS BRONZE)
 C=2144-AA-A2AA(+B) (BRASS)
 D=2144-BA-A2AA(+B) (PHOS BRONZE)
 E=6298-A(+*) (PHOS BRONZE)
 H=2188-(*) (BRASS)
 J=2188-(*) (BRASS)
 K=4244-(*) (BRASS)
 L=6298-(*) (PHOS BRONZE)
 M=2144-BA-BIAA(+B) (PHOS BRONZE)
 N=4244-A(+*) (PHOS BRONZE)

NO. OF CKTS.

NO. OF CKTS.	DIM. A	DIM. B	KINK PIN LOCATION (ASS'Y. PROC. D ONLY)
2	(3.96 ± .13) .156 ± .005	(7.82) .308	N/A
3	(7.92 ± .13) .312 ± .005	(11.79) .464	N/A
4	(11.89 ± .13) .468 ± .005	(15.75) .620	1, 2 3, 4
5	(15.85 ± .13) .624 ± .005	(19.71) .776	2, 3 4, 5
6	(19.81 ± .13) .780 ± .005	(23.67) .932	2, 3 4, 5
7	(23.77 ± .25) .936 ± .010	(27.64) 1.088	2, 3 5, 6
8	(27.74 ± .25) 1.092 ± .010	(31.60) 1.244	2, 3 6, 7
9	(31.70 ± .25) 1.248 ± .010	(35.56) 1.400	2, 3 7, 8
10	(35.66 ± .25) 1.404 ± .010	(39.52) 1.556	2, 3 8, 9
11	(39.62 ± .25) 1.560 ± .010	(43.48) 1.712	2, 3 9, 10
12	(43.59 ± .25) 1.716 ± .010	(47.45) 1.868	2, 3 10, 11
13	(47.55 ± .25) 1.872 ± .010	(51.41) 2.024	2, 3 11, 12
14	(51.51 ± .36) 2.028 ± .014	(55.37) 2.180	2, 3 12, 13
15	(55.47 ± .36) 2.184 ± .014	(59.33) 2.336	2, 3 13, 14
16	(59.44 ± .36) 2.340 ± .014	(63.30) 2.492	2, 3 14, 15

20	U
19	T
18	U7
17	M
16	T6
15	T
14	T2
13	U6
12	U5
11	R3
10	U
9	T
8	T
7	U3
6	U
5	U
4	U
3	U
2	U
1	U7



LTR.	REVISIONS	LTR.	REVISIONS
U7	REL AANN102 UCP2003-0130 7/22/2002 SAMIEC	U6	REL FANAS03 UCP2001-0247 9-18-00 SAMIEC

DIMENSIONS SHOWN (METRIC) INCH UNLESS OTHERWISE SPECIFIED TOLERANCES IN MILS ± 1/100"

± PLACE ± .010	---
± PLACE ± .014	± 0.25
± PLACE ---	± 0.36

DRIFT BEING DIMENSIONABLE MUST REMAIN WITHIN DIMENSIONS

DRG: PEREZ CHKD: ARQUELA PAT: PATL
 APPD: LENZ SCALE: 1:1

FILE NAME: S2145X1

TITLE: HOUSING ASS'Y, P.C. TAIL (3.96)/.156 2145 SERIES DRAWING

MOLEX INCORPORATED

SEE CHART SDA-2145

DATE: 10F 20 7 79 /87

THIS DRAWING CONTAINS INFORMATION THAT IS PROPRIETARY TO MOLEX INC AND SHOULD NOT BE USED WITHOUT WRITTEN PERMISSION.



Distributor of Molex Connector Corporation: Excellent Integrated System Limited
 Datasheet of 0009521152 - Connector Receptacle, Bottom Entry 15 Position 0.156" (3.96mm)
 Tin Through Hole

Contact us: sales@integrated-circuit.com Website: www.integrated-circuit.com

		13	12	11	10	9	8	7	6	2145	4	3	2	1		
		ENG. NO.	HOUSING NO.	TERMINAL NO.	DIM. C		EDP ON SHT/COL									
J	A-2145-AANA(I02)-*	2145-N-AN	2144-AA-A IAA-102B	(3.68) / .145	7	/ 1										
J	A-2145-AANA(I22)-*	2145-N-AN	2144-AA-A IAA-122B	(3.68) / .145	7	/ 2										
J	A-2145-AANA(S05)-*	2145-N-AN	2144-AA-A IAA-505B	(3.68) / .145	7	/ 3										
J	A-2145-AANA(S07)-*	2145-N-AN	2144-AA-A IAA-507B	(3.68) / .145	7	/ 4										
I	A-2145-AANB(S58)-*	2145-N-AN	2144-BA-A IAA-558B	(3.68) / .145	8	/ 1										
I	A-2145-AANA(P913)-*	2145-N-AN	2144-AA-A IAA-P913B	(3.68) / .145	8	/ 2										
I	A-2145-ABNA(I22)-*	2145-NBK-AN	2144-AA-A IAA-122B	(3.68) / .145	8	/ 3										
I	A-2145-ABNA(P913)-*	2145-NBK-AN	2144-AA-A IAA-P913B	(3.68) / .145	8	/ 4										
I	A-2145-AANA(S87)-*	2145-N-AN	2144-AA-A IAA-587B	(3.68) / .145	9	/ 1										
I	A-2145-AGNA(P913)-*	2145-N-CN	2144-AA-A IAA-587B	(3.68) / .145	9	/ 2										
H	A-2145-BANH(I02)-*	2145-N-AN	2188-(I02)	(4.06) / .160	9	/ 3										
H	A-2145-BANH(I22)-*	2145-N-AN	2188-(I22)	(4.06) / .160	9	/ 4										
H	A-2145-BANL(P913)-*	2145-N-AN	6298-(P913)	(4.06) / .160	10	/ 1										
H	A-2145-BANL(S65)-*	2145-N-AN	6298-(S65)	(4.06) / .160	10	/ 2										
H	A-2145-BBNH(I22)-*	2145-NBK-AN	2188-(I22)	(4.06) / .160	10	/ 3										
G	A-2145-CANA(I02)-*	2145-N-AN	2144-AA-A IAA-102B	(3.05) / .120	10	/ 4										
G	A-2145-CANA(I22)-*	2145-N-AN	2144-AA-A IAA-122B	(3.05) / .120	11	/ 1										
G	A-2145-CANB(S65)-*	2145-N-AN	2144-BA-A IAA-565B	(3.05) / .120	11	/ 2										
G	A-2145-CANB(P913)-*	2145-N-AN	2144-AA-A2AA-P913B	(4.80) / .189	11	/ 3										
G	A-2145-FGNA(S87)-*	2145-N-CN	2144-AA-A IAA-587B	(3.05) / .120	11	/ 4										
F	A-2145-FANA(P913)-*	2145-N-AN	2144-AA-A IAA-P913B	(3.05) / .120	12	/ 1										
F	A-2145-DANC(P913)-*	2145-N-AN	2144-AA-A2AA-P913B	(4.80) / .189	12	/ 2										
F	A-2145-BBNH(P913)-*	2145-NBK-AN	2188-(P913)	(4.06) / .160	12	/ 3										
F	A-2145-CBNA(P913)-*	2145-NBK-AN	2144-AA-A IAA-P913B	(3.05) / .120	12	/ 4										
F	A-2145-FGNA(S50)-*	2145-N-CN	2144-AA-A IAA-550B	(3.05) / .120	13	/ 1										
F	A-2145-BANH(P913)-*	2145-N-AN	2188-(P913)	(4.06) / .160	13	/ 2										
E	A-2145-BANH(S87)-*	2145-N-AN	2188-(S87)	(4.06) / .160	13	/ 3										
E	A-2145-FANA(S03)-*	2145-N-AN	2144-AA-A IAA-503B	(3.05) / .120	13	/ 4										
E	A-2145-EANH(P913)-*	2145-N-AN	2188-(P913)	(4.06) / .160	14	/ 1										
E	A-2145-AANK(P913)-*	2145-N-AN	4244-(P913)	(3.68) / .145	14	/ 2										
E	A-2145-ABNK(P913)-*	2145-NBK-AN	4244-(P913)	(3.68) / .145	14	/ 3										
D	A-2145-ABNA(S87)-*	2145-NBK-AN	2144-AA-A IAA-587B	(3.68) / .145	14	/ 4										
D	A-2145-AANA-(I09)-*	2145-N-AN	2144-AA-A IAA-109B	(3.68) / .145	15	/ 1										
D	A-2145-CANA(P913)-*	2145-N-AN	2144-AA-A IAA-P913B	(3.05) / .120	15	/ 2										
D	A-2145-AANB(I22)-*	2145-N-AN	2144-BA-A IAA(I22)B	(3.68) / .145	15	/ 3										
D	A-2145-BANL(I22)-*	2145-N-AN	6298-(I22)	(4.06) / .160	15	/ 4										
C	A-2145-CANB(I22)-*	2145-N-AN	2144-BA-A IAA(I22)B	(3.05) / .120	16	/ 1										
C	A-2145-EGNH(P913)-*	2145-N-CN	2188-(P913)	(4.06) / .160	16	/ 2										
C	A-2145-FGNA(P913)-*	2145-N-CN	2144-AA-A IAA-P913B	(3.05) / .120	16	/ 3										
C	A-2145-CANA(S87)-*	2145-N-AN	2144-AA-A IAA-587B	(3.05) / .120	16	/ 4										
B	A-2145-BBNH(I22)-*	2145-NGN-AN	2188-(I22)	(4.06) / .160	17	/ 1										
B	A-2145-BJNH(I22)-*	2145-NYW-AN	2188-(I22)	(4.06) / .160	17	/ 2										
B	A-2145-BKNH(I22)-*	2145-NRD-AN	2188-(I22)	(4.06) / .160	17	/ 3										
A																

SEE SHEET I	M1	SEE SHEET I	DIMENSIONS SHOWN IN METRIC INCH	▽ = 0	▽ = 0	REVISE ONLY ON CAD SYSTEM
SEE SHEET I	M	SEE SHEET I	UNLESS OTHERWISE SPECIFIED	TITLE HOUSING ASSY, P.C. TAIL		
SEE SHEET I	K	SEE SHEET I	TOLERANCES UNLESS AS NOTED	3.96 / .156		
SEE SHEET I	J3	SEE SHEET I	INCH METRIC	2145 SERIES DRAWING		
SEE SHEET I	J	SEE SHEET I	1 PLACE 2	MOLEX INCORPORATED SHEET NO. 5 DATE 17 / 9 / 87		
SEE SHEET I	H	SEE SHEET I	2 PLACE 4	PART NO. SDA-2145		
SEE SHEET I	G1	SEE SHEET I	3 PLACE 8	DRAWING CHART		
SEE SHEET I	G1	SEE SHEET I	4 PLACE 16	FILE NAME		
LTR. REVISIONS	LTR. REVISIONS	LTR. REVISIONS	DRAWN: PEREZ, J. DATE: 11/18/87	THIS DRAWING CONTAINS INFORMATION THAT IS PROPRIETARY TO MOLEX INC. AND SHOULD NOT BE LOANED, REPRODUCED, COPIED, OR DISSEMINATED WITHOUT PERMISSION. KK C		



Distributor of Molex Connector Corporation: Excellent Integrated System Limited
 Datasheet of 0009521152 - Connector Receptacle, Bottom Entry 15 Position 0.156" (3.96mm)
 Tin Through Hole

Contact us: sales@integrated-circuit.com Website: www.integrated-circuit.com

A-2145-AANA(587)-*			A-2145-AGNA(P913)-*			A-2145-BANH(102)-*			A-2145-BANH(122)-*		
PART NO.	ENG. NO(SUFFIX ONLY)	VOID CKT.	PART NO.	ENG. NO(SUFFIX ONLY)	VOID CKT.	PART NO.	ENG. NO(SUFFIX ONLY)	VOID CKT.	PART NO.	ENG. NO(SUFFIX ONLY)	VOID CKT.
09-62-3021	-AA2A(587)			-AG2A(P913)			-BA2H(102)			-BA2H(122)	
09-62-3031	-AA3A(587)			-AG3A(P913)			-BA3H(102)			-BA3H(122)	
09-62-3041	-AA4A(587)			-AG4A(P913)		09-52-1042	-BA4H(102)		09-86-3042	-BA4H(122)	
09-62-3051	-AA5A(587)			-AG5A(P913)			-BA5H(102)			-BA5H(122)	
09-62-3061	-AA6A(587)			-AG6A(P913)			-BA6H(102)			-BA6H(122)	
09-62-3071	-AA7A(587)			-AG7A(P913)			-BA7H(102)		09-86-3072	-BA7H(122)	
09-62-3081	-AA8A(587)			-AG8A(P913)			-BA8H(102)		09-86-3082	-BA8H(122)	
09-62-3091	-AA9A(587)		09-52-2097	-AG9A(P913)		09-52-1092	-BA9H(102)		09-86-3092	-BA9H(122)	
09-62-3101	-AA10A(587)			-AG10A(P913)			-BA10H(102)		09-86-3102	-BA10H(122)	
09-62-3111	-AA11A(587)			-AG11A(P913)			-BA11H(102)		09-86-3112	-BA11H(122)	
09-62-3121	-AA12A(587)			-AG12A(P913)			-BA12H(102)		09-86-3122	-BA12H(122)	
09-62-3131	-AA13A(587)			-AG13A(P913)			-BA13H(102)			-BA13H(122)	
09-62-3141	-AA14A(587)			-AG14A(P913)			-BA14H(102)			-BA14H(122)	
09-62-3151	-AA15A(587)			-AG15A(P913)		09-52-1152	-BA15H(102)		09-86-3152	-BA15H(122)	
	-AA16A(587)			-AG16A(P913)			-BA16H(102)			-BA16H(122)	

COLUMN NO. 1	CON'T. IN COLUMN NO.	SHEET NO.	COLUMN NO. 2	CON'T. IN COLUMN NO.	SHEET NO.	COLUMN NO. 3	CON'T. IN COLUMN NO.	SHEET NO.	COLUMN NO. 4	CON'T. IN COLUMN NO.	SHEET NO.

SEE SHEET I M7 SEE SHEET I

SEE SHEET I M1 SEE SHEET I

SEE SHEET I M SEE SHEET I

SEE SHEET I DB SEE SHEET I

T SEE SHEET I D1 SEE SHEET I

S SEE SHEET I D SEE SHEET I

P SEE SHEET I A SEE SHEET I

LTR. REVISIONS LTR. REVISIONS

DIMENSIONS SHOWN IN METRIC INCH

UNLESS OTHERWISE SPECIFIED

ALL DIMENSIONS ARE IN INCH

1 PLACE	2
2 PLACE	3
3 PLACE	4

ONLY A DIMENSION AND DIMENSION MUST

REMAIN WITHIN DIMENSIONS

DRW: PEREZ; CHN: PATEL

BY: JESSE LAM

APP: LENZ SCALE: 1:1

DATE: 12/19/87

REVISE ONLY ON CAD SYSTEM

TITLE: HOUSING ASSY, P.C. TAIL

(3.96)/.156 Q

2145 SERIES DRAWING

MOLEX INCORPORATED

FILE NAME: SDA-2145

THIS DRAWING CONTAINS INFORMATION THAT IS PROPRIETARY TO MOLEX INC. AND SHOULD NOT BE LOANED, REPRODUCED, COPIED, OR