



Distributor of Molex Connector Corporation: Excellent Integrated System Limited
Datasheet of 0009624061 - Connector Receptacle 6 Position 0.156" (3.96mm) Gold Through
Hole, Right Angle

Contact us: sales@integrated-circuit.com Website: www.integrated-circuit.com

Excellent Integrated System Limited

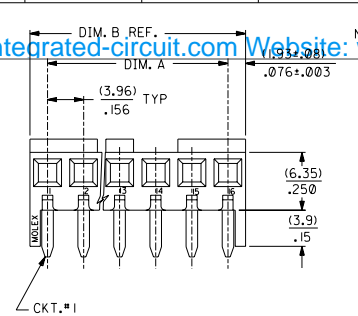
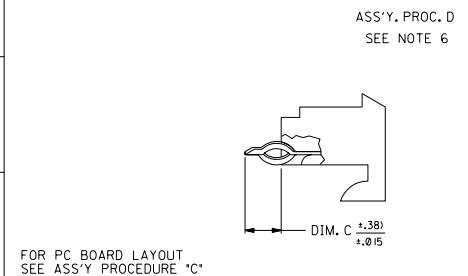
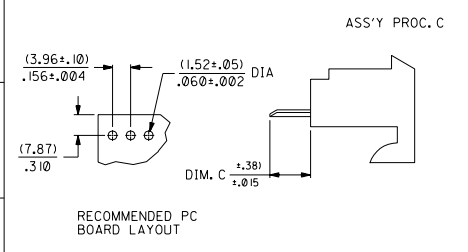
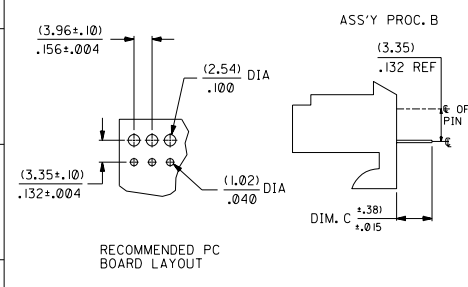
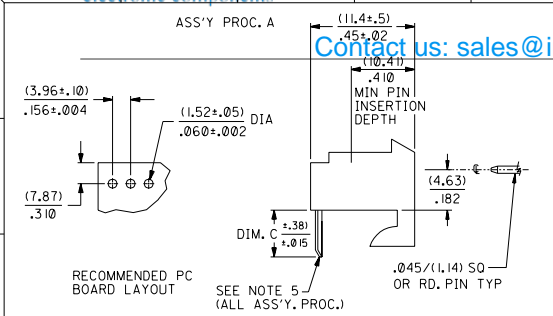
Stocking Distributor

Click to view price, real time Inventory, Delivery & Lifecycle Information:

[Molex Connector Corporation](#)
[0009624061](#)

For any questions, you can email us directly:
sales@integrated-circuit.com

Contact us: sales@integrated-circuit.com Website: www.integrated-circuit.com



- NOTES:
1. TERMINALS MUST CONFORM TO SOLDERABILITY SPEC. ES-152.
 2. PARTS CONFORM TO PRODUCT SPEC 08-50.
 3. HOUSING MATERIAL: NYLON, UL LISTED
 4. ** PRECEDING ENG. NO. IN CHARTS DESIGNATES STANDARD PRODUCT.
 5. TERMINAL TAIL CENTERLINES ARE TO BE WITHIN (.301)/.012 OF EACH OTHER.
 6. FOR KINKED PIN INFORMATION SEE SMES-42329-***.

A - 2145 - * * N * * * - *
 VOID LOCATION
 PACKAGING CODE
 BLANK-BULK PACK
 A-TUBE PACK PER PK-40873-0026

ASS'Y. PROCEDURE
 A=RIGHT ANGLE
 B=BOTTOM ENTRY
 C=TOP ENTRY
 D=TOP ENTRY WITH KINKED TAIL
 E=TOP ENTRY WITH HOOKS CUT OFF
 F=TOP ENTRY WITH HOOKS CUT OFF

HOUSING NO.
 A=2145-N-AN
 94V-2 NATURAL WITH RAMPES AND HOOKS
 B=2145-NBK-AN
 94V-2 DYED BLACK WITH RAMPES AND HOOKS
 C=2145-A-AN
 94V-0 NATURAL WITH RAMPES AND HOOKS
 G=2145-N-CN
 94V-2 NATURAL WITH HOOKS ONLY
 H=2145-NGN-AN
 94V-2 DYED GREEN WITH RAMPES AND HOOKS
 J=2145-NYW-AN
 94V-2 DYED YELLOW WITH RAMPES AND HOOKS
 K=2145-NRD-AN
 94V-2 DYED RED WITH RAMPES AND HOOKS
 L=2145-N-AN-5
 94V-2 NATURAL W/ RAMPES AND HOOKS MOLDED IN VOIDS

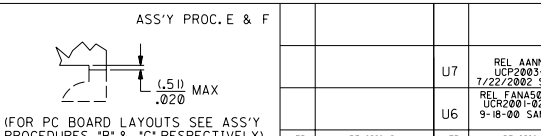
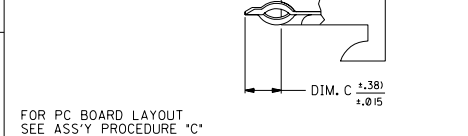
PLATING
 (102) 200 M.I. MIN TIN OVER 100 M.I. MIN COPPER
 (587) SELECT GOLD 15 M.I. MIN
 SELECT TIN-LEAD 75 M.I. MIN. OVER 50 M.I. MIN NICKEL

TERMINAL NO.
 A=2144-AA-AIAA(+B) (BRASS)
 B=2144-BA-AIAA(+B) (PHOS BRONZE)
 C=2144-AA-A2AA(+B) (BRASS)
 D=2144-BA-A2AA(+B) (PHOS BRONZE)
 E=6298-A(+*) (PHOS BRONZE)
 H=2188-(*) (BRASS)
 J=2188-(*) (BRASS)
 K=4244-(*) (BRASS)
 L=6298-(*) (PHOS BRONZE)
 M=2144-BA-BIAA(+B) (PHOS BRONZE)
 N=4244-A(+*) (PHOS BRONZE)

NO. OF CKTS.

NO. OF CKTS.	DIM. A	DIM. B	KINK PIN LOCATION (ASS'Y. PROC. D ONLY)
2	(3.96 ± .13) .156 ± .005	(7.82) .308	N/A
3	(7.92 ± .13) .312 ± .005	(11.79) .464	N/A
4	(11.89 ± .13) .468 ± .005	(15.75) .620	1, 2 3, 4
5	(15.85 ± .13) .624 ± .005	(19.71) .776	2, 3 4, 5
6	(19.81 ± .13) .780 ± .005	(23.67) .932	2, 3 4, 5
7	(23.77 ± .25) .936 ± .010	(27.64) 1.088	2, 3 5, 6
8	(27.74 ± .25) 1.092 ± .010	(31.60) 1.244	2, 3 6, 7
9	(31.70 ± .25) 1.248 ± .010	(35.56) 1.400	2, 3 7, 8
10	(35.66 ± .25) 1.404 ± .010	(39.52) 1.556	2, 3 8, 9
11	(39.62 ± .25) 1.560 ± .010	(43.48) 1.712	2, 3 9, 10
12	(43.59 ± .25) 1.716 ± .010	(47.45) 1.868	2, 3 10, 11
13	(47.55 ± .25) 1.872 ± .010	(51.41) 2.024	2, 3 11, 12
14	(51.51 ± .36) 2.028 ± .014	(55.37) 2.180	2, 3 12, 13
15	(55.47 ± .36) 2.184 ± .014	(59.33) 2.336	2, 3 13, 14
16	(59.44 ± .36) 2.340 ± .014	(63.30) 2.492	2, 3 14, 15

20	U
19	T
18	U7
17	M
16	T6
15	T
14	T2
13	U6
12	U5
11	R3
10	U
9	T
8	T
7	U3
6	U
5	U
4	U
3	U
2	U
1	U7



DIMENSIONS SHOWN (METRIC) INCH UNLESS OTHERWISE SPECIFIED TOLERANCES IN MILS ± 1/100"

± PLACE ± .010	---
± PLACE ± .014	± 0.25
± PLACE ---	± 0.36

DRIFT BEING SIGNIFICANT MUST REMAIN WITHIN DIMENSIONS

DRG: PEREZ CHKD: PATTEL
 BY: ARQUELA
 APPD: LENZ SCALE: 1:1

FILE NAME: S2145X1

TITLE: HOUSING ASS'Y, P.C. TAIL (3.96)/.156 2145 SERIES DRAWING

MOLEX INCORPORATED
 15000 W. 10TH AVE. GOSHEN, IN 46526 U.S.A.

PART NO.: SEE CHART
 DRG. NO.: SDA-2145

SHEET NO. 1 OF 20
 DATE 7/9/87

THIS DRAWING CONTAINS INFORMATION THAT IS PROPRIETARY TO MOLEX INC. AND SHOULD NOT BE USED WITHOUT WRITTEN PERMISSION.



Distributor of Molex Connector Corporation: Excellent Integrated System Limited
 Datasheet of 0009624061 - Connector Receptacle 6 Position 0.156" (3.96mm) Gold Through Hole, Right Angle

Contact us: sales@integrated-circuit.com Website: www.integrated-circuit.com

		13	12	11	10	9	8	7	6	2145	4	3	2	1		
ENG. NO.		HOUSING NO.			TERMINAL NO.			DIM. C		EDP ON SHT/COL						
J	A-2145-AANA(I02)-*	2145-N-AN			2144-AA-A IAA-102B			(3.68) / .145		7 / 1						
	A-2145-AANA(I22)-*	2145-N-AN			2144-AA-A IAA-122B			(3.68) / .145		7 / 2						
	A-2145-AANA(S05)-*	2145-N-AN			2144-AA-A IAA-505B			(3.68) / .145		7 / 3						
	A-2145-AANA(S07)-*	2145-N-AN			2144-AA-A IAA-507B			(3.68) / .145		7 / 4						
	A-2145-AANB(S58)-*	2145-N-AN			2144-BA-A IAA-558B			(3.68) / .145		8 / 1						
	A-2145-AANA(P913)-*	2145-N-AN			2144-AA-A IAA-P913B			(3.68) / .145		8 / 2						
I	A-2145-ABNA(I22)-*	2145-NBK-AN			2144-AA-A IAA-122B			(3.68) / .145		8 / 3						
	A-2145-ABNA(P913)-*	2145-NBK-AN			2144-AA-A IAA-P913B			(3.68) / .145		8 / 4						
	A-2145-AANA(S87)-*	2145-N-AN			2144-AA-A IAA-587B			(3.68) / .145		9 / 1						
	A-2145-AGNA(P913)-*	2145-N-CN			2144-AA-A IAA-587B			(3.68) / .145		9 / 2						
H	A-2145-BANH(I02)-*	2145-N-AN			2188-(I02)			(4.06) / .160		9 / 3						
	A-2145-BANH(I22)-*	2145-N-AN			2188-(I22)			(4.06) / .160		9 / 4						
	A-2145-BANL(P913)-*	2145-N-AN			6298-(P913)			(4.06) / .160		10 / 1						
	A-2145-BANL(S65)-*	2145-N-AN			6298-(S65)			(4.06) / .160		10 / 2						
	A-2145-BBNH(I22)-*	2145-NBK-AN			2188-(I22)			(4.06) / .160		10 / 3						
G	A-2145-CANA(I02)-*	2145-N-AN			2144-AA-A IAA-102B			(3.05) / .120		10 / 4						
	A-2145-CANA(I22)-*	2145-N-AN			2144-AA-A IAA-122B			(3.05) / .120		11 / 1						
	A-2145-CANB(S65)-*	2145-N-AN			2144-BA-A IAA-565B			(3.05) / .120		11 / 2						
	A-2145-CANB(P913)-*	2145-N-AN			2144-AA-A2AA-P913B			(4.80) / .189		11 / 3						
	A-2145-FGNA(S87)-*	2145-N-CN			2144-AA-A IAA-587B			(3.05) / .120		11 / 4						
	A-2145-FANA(P913)-*	2145-N-AN			2144-AA-A IAA-P913B			(3.05) / .120		12 / 1						
F	A-2145-DANB(P913)-*	2145-N-AN			2144-AA-A2AA-P913B			(4.80) / .189		12 / 2						
	A-2145-BBNH(P913)-*	2145-NBK-AN			2188-(P913)			(4.06) / .160		12 / 3						
	A-2145-CBNA(P913)-*	2145-NBK-AN			2144-AA-A IAA-P913B			(3.05) / .120		12 / 4						
	A-2145-FGNA(S50)-*	2145-N-CN			2144-AA-A IAA-550B			(3.05) / .120		13 / 1						
	A-2145-BANH(P913)-*	2145-N-AN			2188-(P913)			(4.06) / .160		13 / 2						
E	A-2145-BANH(S87)-*	2145-N-AN			2188-(S87)			(4.06) / .160		13 / 3						
	A-2145-FANA(S03)-*	2145-N-AN			2144-AA-A IAA-503B			(3.05) / .120		13 / 4						
	A-2145-EANH(P913)-*	2145-N-AN			2188-(P913)			(4.06) / .160		14 / 1						
	A-2145-AANK(P913)-*	2145-N-AN			4244-(P913)			(3.68) / .145		14 / 2						
	A-2145-ABNK(P913)-*	2145-NBK-AN			4244-(P913)			(3.68) / .145		14 / 3						
D	A-2145-ABNA(S87)-*	2145-NBK-AN			2144-AA-A IAA-587B			(3.68) / .145		14 / 4						
	A-2145-AANA-(I09)-*	2145-N-AN			2144-AA-A IAA-109B			(3.68) / .145		15 / 1						
	A-2145-CANA(P913)-*	2145-N-AN			2144-AA-A IAA-P913B			(3.05) / .120		15 / 2						
	A-2145-AANB(I22)-*	2145-N-AN			2144-BA-A IAA(I22)B			(3.68) / .145		15 / 3						
	A-2145-BANL(I22)-*	2145-N-AN			6298-(I22)			(4.06) / .160		15 / 4						
	A-2145-CANB(I22)-*	2145-N-AN			2144-BA-A IAA(I22)B			(3.05) / .120		16 / 1						
C	A-2145-EGNH(P913)-*	2145-N-CN			2188-(P913)			(4.06) / .160		16 / 2						
	A-2145-FGNA(P913)-*	2145-N-CN			2144-AA-A IAA-P913B			(3.05) / .120		16 / 3						
	A-2145-CANA(S87)-*	2145-N-AN			2144-AA-A IAA-587B			(3.05) / .120		16 / 4						
	A-2145-BHNH(I22)-*	2145-NGN-AN			2188-(I22)			(4.06) / .160		17 / 1						
	A-2145-BJNH(I22)-*	2145-NYW-AN			2188-(I22)			(4.06) / .160		17 / 2						
B	A-2145-BKNH(I22)-*	2145-NRD-AN			2188-(I22)			(4.06) / .160		17 / 3						
A																

SEE SHEET I	M1	SEE SHEET I	DIMENSIONS SHOWN IN METRIC INCH		<input type="checkbox"/> 0 <input type="checkbox"/> 0 REVISE ONLY ON CAD SYSTEM												
SEE SHEET I	M	SEE SHEET I	UNLESS OTHERWISE SPECIFIED TOLERANCES ARE AS FOLLOWS														
SEE SHEET I	K	SEE SHEET I	<table border="1"> <tr><td>PLACES</td><td>INCH</td><td>METRIC</td></tr> <tr><td>1 PLACE</td><td>± .010</td><td>± .25</td></tr> <tr><td>2 PLACE</td><td>± .005</td><td>± .13</td></tr> <tr><td>3 PLACE</td><td>± .002</td><td>± .05</td></tr> </table>		PLACES	INCH	METRIC	1 PLACE	± .010	± .25	2 PLACE	± .005	± .13	3 PLACE	± .002	± .05	TITLE: HOUSING ASSY, P.C. TAIL (3.96) / .156 Q 2145 SERIES DRAWING MOLEX INCORPORATED PART NO. SDA-2145 SHEET NO. 5 DATE 17 / 9 / 87
PLACES	INCH	METRIC															
1 PLACE	± .010	± .25															
2 PLACE	± .005	± .13															
3 PLACE	± .002	± .05															
SEE SHEET I	J3	SEE SHEET I	DRAFTING: PEREZ, J. / DESIGNED: PATEL, J. CHECKED: LENZ, S. / SCALE: 1:1 DATE: 11/18/87		THIS DRAWING CONTAINS INFORMATION THAT IS PROPRIETARY TO MOLEX INC. AND SHOULD NOT BE USED WITHOUT WRITTEN PERMISSION.												
SEE SHEET I	H	SEE SHEET I	LTR. REVISIONS		FILE NAME: SDA-2145												
SEE SHEET I	G1	SEE SHEET I	LTR. REVISIONS		INCH: 1/16 METRIC: 1.5												

