



**Distributor of Molex Connector Corporation: Excellent Integrated System Limited**  
Datasheet of 0190050017 - Connector Quick Connect Receptacle 10-12 AWG 0.250"  
(6.35mm) Crimp

Contact us: [sales@integrated-circuit.com](mailto:sales@integrated-circuit.com) Website: [www.integrated-circuit.com](http://www.integrated-circuit.com)

---

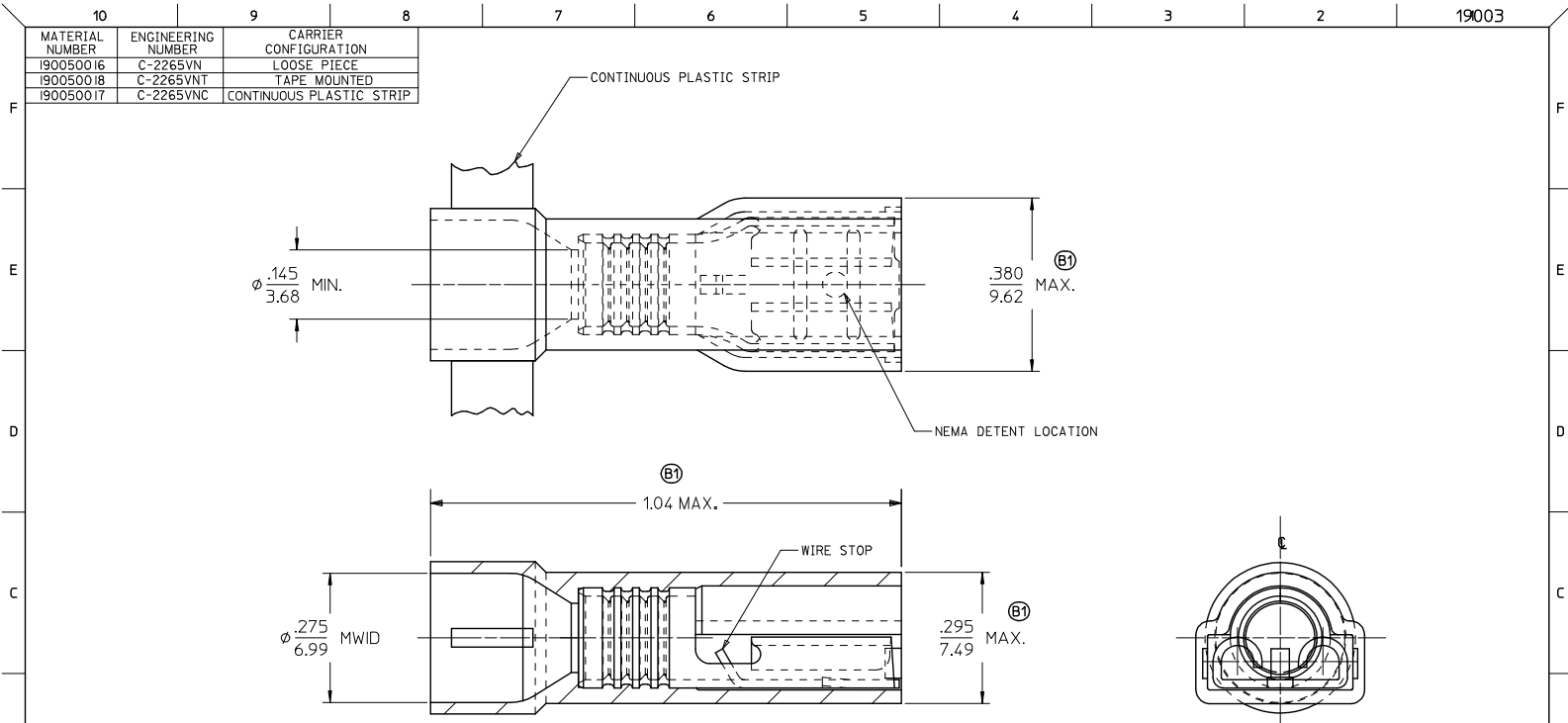
## **Excellent Integrated System Limited**

Stocking Distributor

Click to view price, real time Inventory, Delivery & Lifecycle Information:

[Molex Connector Corporation](#)  
[0190050017](#)

For any questions, you can email us directly:  
[sales@integrated-circuit.com](mailto:sales@integrated-circuit.com)



SALES DRAWING

NOTES:

1. MATERIAL: TERMINAL: BRASS .018/0.46.  
PLATING: ELECTRO-TIN  
INSULATION: NYLON 6/6 94V-0 RATING  
COLOR: YELLOW.
2. MWID = MAXIMUM WIRE INSULATION DIAMETER.
3. ALL DIMENSIONS = INCHES/MM
4. PARTS ARE ROHS COMPLIANT.

<b>CORRECT TOLERANCES</b> EC NO: WNA2009-0432 DRAWN BY: THRODAHL 2009/01/15 CHKD: MACNEIL 2009/01/16 APPR: MACNEIL 2009/01/16 REV: B1	<b>QUALITY SYMBOLS</b> $\nabla=0$ $\nabla=0$	<b>GENERAL TOLERANCES (UNLESS SPECIFIED)</b>		<b>DIMENSION STYLE</b> IN/MM		<b>SCALE</b> 5:1	<b>DESIGN UNITS</b> INCH	<input checked="" type="checkbox"/> THIRD ANGLE PROJECTION	
		4 PLACES $\pm$ --- $\pm$ --- 3 PLACES $\pm$ --- $\pm$ .005 2 PLACES $\pm$ 0.13 $\pm$ .01 1 PLACE $\pm$ 0.25 $\pm$ --- ANGULAR $\pm$ ---°	DRAWN BY: HEB DATE: 2001/06/07 CHECKED BY: RWD DATE: 2001/06/07 APPROVED BY: RWD DATE: 2001/06/07	<b>TITLE</b> FIQD FEMALE, INSULKRIMP 94V-0 MATERIAL 12-10 AWG					
		DRAFT WHERE APPLICABLE MUST REMAIN WITHIN DIMENSIONS		<b>MATERIAL NO.</b> SEE CHART		<b>DOCUMENT NO.</b> SD-19003-004		<b>SHEET NO.</b> 1 OF 1	
		THIS DRAWING CONTAINS INFORMATION THAT IS PROPRIETARY TO MOLEX INCORPORATED AND SHOULD NOT BE USED WITHOUT WRITTEN PERMISSION							