

Excellent Integrated System Limited

Stocking Distributor

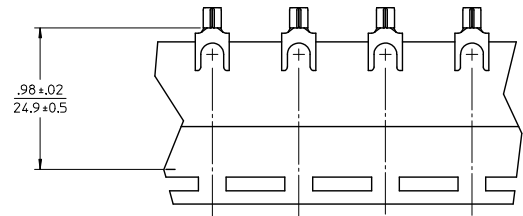
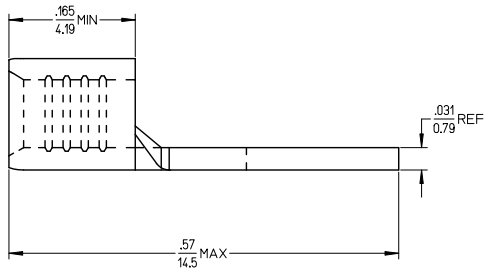
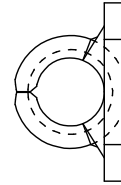
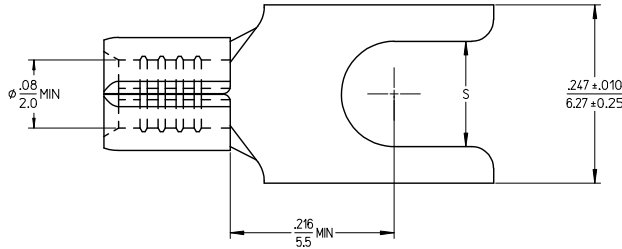
Click to view price, real time Inventory, Delivery & Lifecycle Information:

[Molex Connector Corporation](#)
[0191290032](#)

For any questions, you can email us directly:

sales@integrated-circuit.com

MATERIAL NO.	ENGINEERING NO.	STUD SIZE	DIMENSION	PACKAGING
191290032	BB-1471-04	4	S +.005/0.13	LOOSE PIECE
191290030	BB-1471-06	6	.119/3.02	LOOSE PIECE
191290028	BB-1471-06T	6	.146/3.71	TAPE MOUNTED



PARTS ON TAPE

SALES DRAWING

NOTES:
 1) MATERIAL: MATTE TIN-PLATED COPPER.
 2) PARTS ARE ROHS COMPLIANT.

RELEASED EC NO: IPG2014-0097 DRAWING: JASOT 2013/07/12 CHKD: JMACNEIL 2013/07/12 APPR: JMACNEIL 2013/07/31	QUALITY SYMBOLS ▽=0 ▽=0	GENERAL TOLERANCES (UNLESS SPECIFIED)		DIMENSION STYLE IN/MM		SCALE 10:1	DESIGN UNITS INCH	THIRD ANGLE PROJECTION
		4 PLACES ± --- ± --- 3 PLACES ± --- ± .005 2 PLACES ± 0.13 ± .01 1 PLACE ± 0.25 ± --- ANGULAR ± 1/2°	DRAWN BY RCM DATE 1989/10/17	CHECKED BY JMACNEIL DATE 2013/07/12	TITLE SPADE TONGUE TERMINAL (BLOCK), 16-14 AWG, KRIMPTITE			
DRAFT WHERE APPLICABLE MUST REMAIN WITHIN DIMENSIONS	SEE CHART	APPROVED BY JMACNEIL DATE 2013/07/31	MATERIAL NO. SD-19129-004		MOLEX INCORPORATED	SHEET NO. 1 OF 1		