

Excellent Integrated System Limited

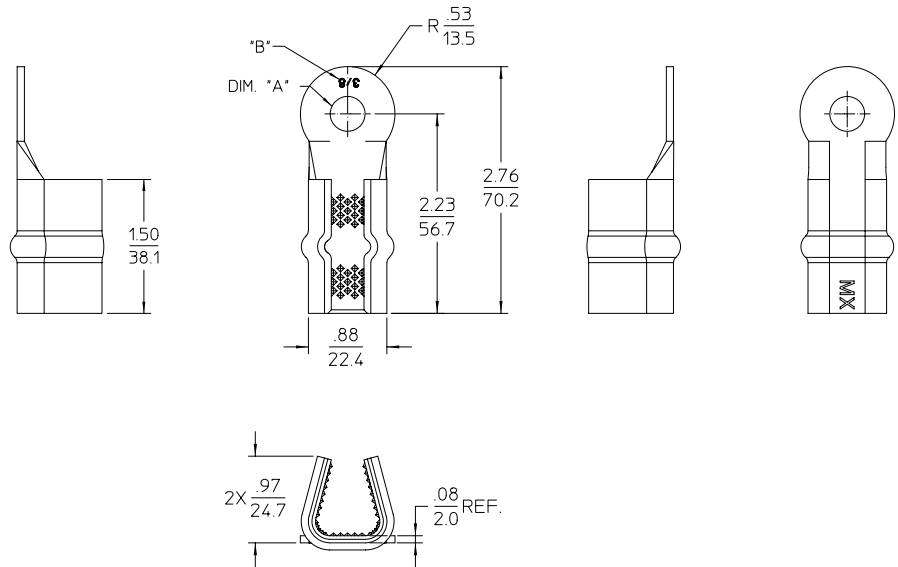
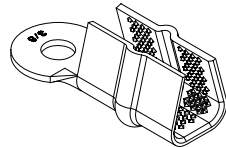
Stocking Distributor

Click to view price, real time Inventory, Delivery & Lifecycle Information:

[Molex Connector Corporation](#)
[0191951047](#)


For any questions, you can email us directly:

sales@integrated-circuit.com



NOTES:

1. MATERIAL: COPPER ALLOY.
2. FINISH: ELECTRO TIN PLATE.
THICKNESS=100MICRONS MINIMUM.
3. PRODUCT SPECIFICATION: PS-19195-001.
4. PART USED TO CONNECT COPPER OR ALUMINUM SINGLE MAGNET WIRE OR MULTIPLE WIRE COMBINATIONS.
5. COMBINATIONS OF WIRES ARE EITHER MAGNET WIRE TO MAGNET WIRE OR MAGNET WIRE TO LEAD WIRE.

EC NO. ETC2003-0089 DRWN JPAWLICK 2002/09/27 CHKD JPAWLICK 2002/09/27 APPR RDEROSS 2002/09/27	REV	DESCRIPTION	QUALITY SYMBOLS	GENERAL TOLERANCES (UNLESS SPECIFIED)		SCALE 1:1	DESIGN UNITS INCH		THIRD ANGLE PROJECTION	REVISE ON CAD ONLY	
					mm INCH	DIMENSION STYLE IN/MM		TITLE MAGKRIMP ROUND RING 165,000-230,000 CMA			
				▽.0	4 PLACES	± .005	± .005		DRAWN BY	DATE	
					3 PLACES	± .005	± .005		JHACKNEY	99/01/29	
					2 PLACES	± .005	± .010		CHECKED BY	DATE	
					1 PLACE	± 0.25	± .005		RDEROSS	99/01/29	
				▽.0	ANGULAR ± 2 °		APPROVED BY		DATE		
					DRAFT WHERE APPLICABLE		RDEROSS		99/01/29		
					MUST REMAIN WITHIN DIMENSIONS		THIS DRAWING CONTAINS INFORMATION THAT IS PROPRIETARY TO MOLEX INCORPORATED AND SHOULD NOT BE USED WITHOUT WRITTEN PERMISSION				
									MATERIAL NO	DOCUMENT NO	SHEET NO
									SEE CHART	SD-19195-005	1 OF 1
									B		