

Excellent Integrated System Limited

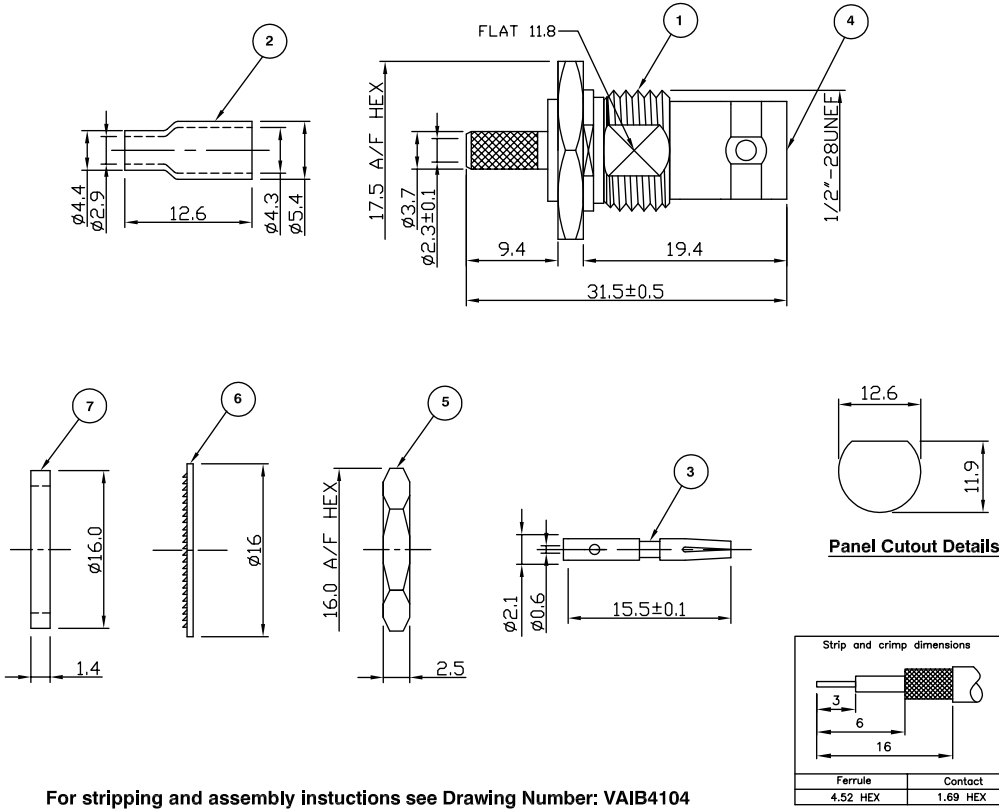
Stocking Distributor

Click to view price, real time Inventory, Delivery & Lifecycle Information:

[Bel Fuse Inc.](#)
[VB40-2071](#)

For any questions, you can email us directly:
sales@integrated-circuit.com

RoHS COMPLIANT



Electrical Characteristics

Nominal Impedance:	50 ohms
Frequency Range:	DC to 4 GHz
VSWR:	1.35:1 maximum
Insertion Loss:	0.2 dB at 3 GHz
Operating Voltage (rms):	500 V maximum at sea level
Dielectric Withstand Voltage (rms):	1500 V maximum at sea level
Contact Resistance:	1.5 milliohms maximum
Insulation Resistance:	5000 megohms minimum

Mechanical Characteristics

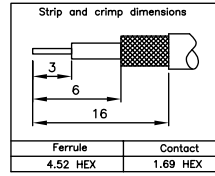
Mating Cycles:	500 cycles minimum
Interface Dimensions:	Conform to MIL-C-39012

Environmental Characteristics

Temperature Range:	-65 °C to +165 °C
--------------------	-------------------

PART	DESCRIPTION	
1	Body	Brass, nickel plated 1.78 μm
2	Ferrule	Brass, nickel plated 1.78 μm
3	Contact	Brass, gold plated 0.076 μm - 0.127 μm
4	Dielectric	PTFE
5	Nut	Brass, nickel plated 1.78 μm
6	Washer	Steel, nickel plated 1.78 μm
7	Gasket	Rubber, red

Panel Cutout Details



For stripping and assembly instructions see Drawing Number: VAIB4104



Cinch Connectivity Solutions
 7-13 Russel Way,
 Widford Industrial Estate,
 Chelmsford, Essex,
 CM1 3AA, UK.
 Tel: +44 (0) 1245 359515
 Fax: +44 (0) 1245 358938

SCALE: Not To Scale
 DIMENSIONS: mm
 TOLERANCES:
 ± 0.2mm unless
 otherwise stated

DRAWN BY:	J Williams
CHECKED BY:	M Terry
APPROVED BY:	A Tusi
DATE:	06 Jun 06

TITLE:
**BNC Bulkhead Crimp
 Jack for RG174**

PART NUMBER:

VB40-2071

PAGE: 1 of 1