

Excellent Integrated System Limited

Stocking Distributor

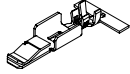
Click to view price, real time Inventory, Delivery & Lifecycle Information:

[Molex Connector Corporation](#)
[0194031131](#)

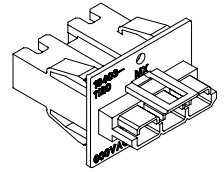
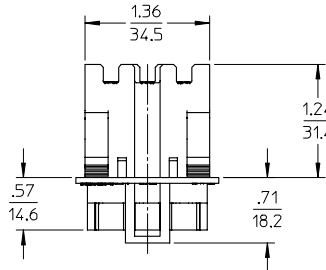
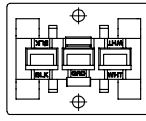
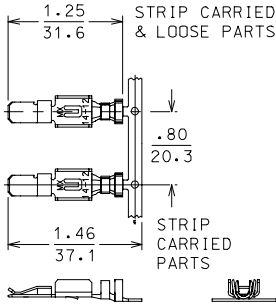
For any questions, you can email us directly:

sales@integrated-circuit.com

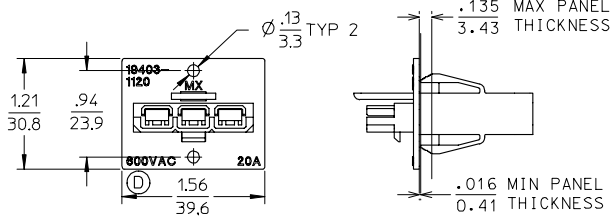
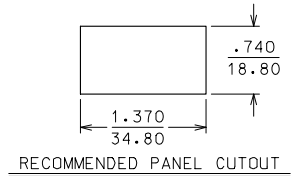
10	9	8	7	6	5	4	3	2	19403
MATERIAL NUMBER	DESCRIPTION								
194031120	SC HEADER								
194031130	TERMINAL, STRIP CARRIED								
194031131	TERMINAL, LOOSE PIECE								



ISOMETRIC VIEW
TERMINAL, STRIP CARRIED



ISOMETRIC VIEW
SC HEADER



SALES DRAWING

NOTES:

- 1) TERMINAL MATERIAL: HIGH COPPER ALLOY
PLATING: TIN
- 2) HOUSING MATERIAL: POLYESTER UL94-5VA

1600VAC WAS 300VAC EC NO: ETC2005-0125 DRAWN BY: CK 2005/01/26 CHECKED BY: RDEROSS 2005/01/26 APPROVED BY: RDEROSS 2005/01/26	QUALITY SYMBOLS ▽=0 ▽=0	GENERAL TOLERANCES (UNLESS SPECIFIED)		DIMENSION STYLE	SCALE	DESIGN UNITS	THIRD ANGLE PROJECTION	
			mm	INCH	IN/MM	1:1	INCH	
		4 PLACES	± .---	± .---	DRAWN BY	DATE	TITLE	
		3 PLACES	± .---	± .005	DYOUNG	00/01/18	CUSTOMER DRAWING	
	2 PLACES	± 0.13	± .01	CHECKED BY	DATE	SC PANEL MOUNT CONNECT		
	1 PLACE	± 0.3	± .---	RDEROSS	00/01/18	14-12 AWG		
		ANGULAR ±1/2°		APPROVED BY	DATE	MOLEX INCORPORATED		
		DRAFT WHERE APPLICABLE MUST REMAIN WITHIN DIMENSIONS		RDEROSS	00/01/18	MATERIAL NO.	DOCUMENT NO.	
				SEE CHART		SD-19403-117	SHEET NO.	
				THIS DRAWING CONTAINS INFORMATION THAT IS PROPRIETARY TO MOLEX INCORPORATED AND SHOULD NOT BE USED WITHOUT WRITTEN PERMISSION				