

## Excellent Integrated System Limited

Stocking Distributor

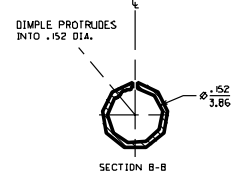
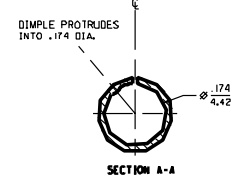
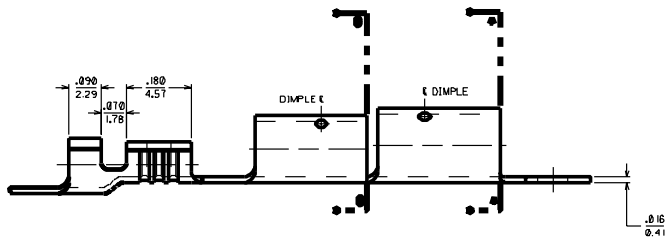
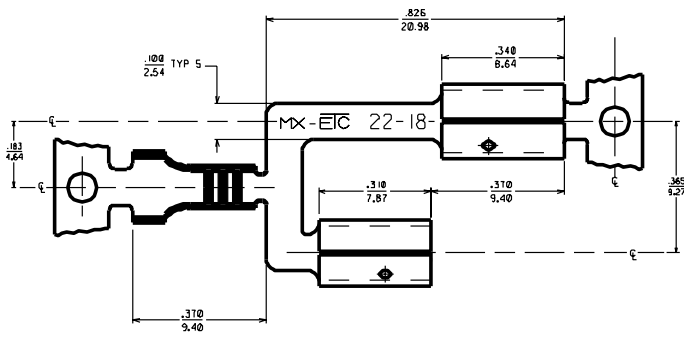
Click to view price, real time Inventory, Delivery & Lifecycle Information:

[Molex Connector Corporation](#)  
[0197254005](#)

For any questions, you can email us directly:

[sales@integrated-circuit.com](mailto:sales@integrated-circuit.com)

PART NUMBER	DESCRIPTION	FINISH
19725-4000	WITH DIMPLES	PLATED
19725-4001	WITHOUT DIMPLES	
19725-4002	WITH DIMPLES	UNPLATED
19725-4003	WITHOUT DIMPLES	



NOTES:  
 1. MATERIAL: C26000 BRASS  
 2. FINISH = TIN PLATED

CUSTOMER DRAWING

DIMENSIONS SHOWN UNLESS NOTED OTHERWISE		<b>REVISE ONLY ON CAD SYSTEM</b>	
UNLESS OTHERWISE SPECIFIED TOLERANCES ARE AS FOLLOWS:		TITLE	
INCH		KRMPTITE DOUBLE	
FRACTIONS		FEMALE BULLET RECEPTACLE	
DECIMALS		.156 & .180 DIA., 22-18 AWC	
ANGLES		DATE	
HOLE LOCATIONS		97/06/26	
HOLE DIAMETERS		SHEET NO.	
HOLE SPACINGS		C 19725-4005	
HOLE DRILLING		PART NO.	
HOLE TAPPING		SEE CHART	
HOLE REAMING		DRAWN BY	
HOLE POLISHING		RWD	
HOLE FINISHING		SCALE	
HOLE CLEANING		5:1	
HOLE INSPECTION		DATE	
HOLE REPORTING		C 19725-4005	
HOLE RECORDING		SIZE	
HOLE ARCHIVING		C	