

## Excellent Integrated System Limited

Stocking Distributor

Click to view price, real time Inventory, Delivery & Lifecycle Information:

[Molex Connector Corporation](#)  
[0340620021](#)

For any questions, you can email us directly:

[sales@integrated-circuit.com](mailto:sales@integrated-circuit.com)

20 19 18 17 16 15 14 13 12 11 10 9 8 7 6 5 4 3 2 1

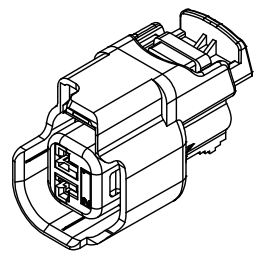
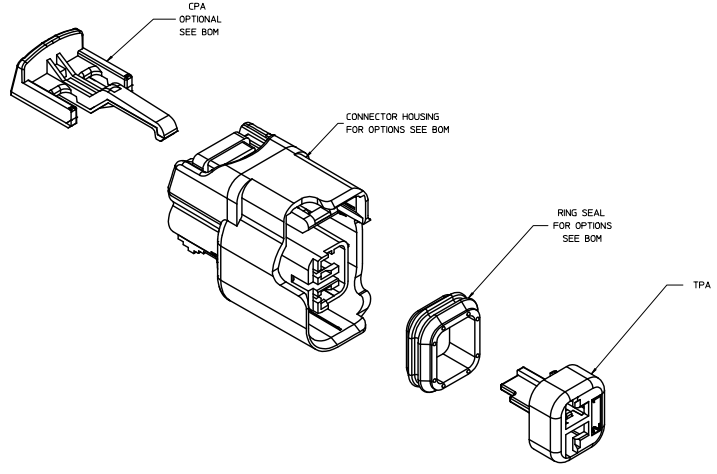
TABLE OF CONTENTS	
SHEET NO.	SHEET DESCRIPTION
1	NOTES
2, 3	CONFIGURATIONS
4	RECEPTACLE CONNECTOR ASSEMBLY
5	MOLEX INTERFACE

NOTES: VALID UNLESS OTHERWISE SPECIFIED

1. GENERAL:  
 a. APPLICATION SPECIFICATION SEE: AS-34062-000  
 -CONTAINS: PRODUCT INTRODUCTION, PRODUCT SUMMARY, CONNECTOR ASSEMBLY, PACKAGING INFORMATION, CONNECTOR MATING, SERVICE INSTRUCTIONS, ELECTRICAL CONTINUITY CHECKING, CRIMPING AND TROUBLESHOOTING.  
 -DESIGNED TO MATE WITH DEVICE CONNECTION AS SPECIFIED IN DRAWING EWCAP 150-S-002-1-Z01, AVAILABLE AT <http://www.ecpuscor/learnis.org/>.  
 -DESIGNED TO MATE WITH BLADE SEALED ASSEMBLY AS SPECIFIED IN DRAWING: SD-34675-001  
 -ASSEMBLY SHIPPED WITH TPA IN PRE-LOCK (SEE TPA PRE-LOCK VIEW IN SHEET 4)  
 b. PRODUCT SPECIFICATION SEE: PS-34062-000  
 -CONTAINS: SCOPE, PRODUCT DESCRIPTION, INTEGRAL COMPONENTS AND ACCESSORIES, APPLICABLE DOCUMENTS AND SPECIFICATIONS, RATINGS, PERFORMANCE, PACKAGING, GAUGE AND FIXTURES, AND OTHER INFORMATION.  
 c. PACKAGING SPECIFICATION PER MOLEX DRAWING: PK-30907-879  
 d. PARTS MUST BE IN COMPLIANCE TO MOLEX CHEMICAL SUBSTANCES FOR PRODUCTS AND PACKAGING SPECIFICATION: DCHS-699000-301  
 e. DATA MUST BE SUBMITTED UNDER THE MOLEX PART NUMBER TO MDS (COMPANY ID#13255)

2. DESIGN - MATERIALS:  
 g. SEE BOM TABLE IN SD-34062-004

3. DESIGN - GEOMETRY:  
 o. THIS IS A 100% CAD GENERATED PART. THE CAD MATHEMATICAL DATA IS THE MASTER FOR THIS PART. FOR DIMENSIONAL OR ANY INFORMATION NOT SHOWN ON THIS DRAWING, ANALYZE THE CAD MODEL  
 b. GEOMETRIC DIMENSIONS AND TOLERANCES PER ASME Y14.5M - 1994  
 c. EDGES AND UNDIMENSIONED DETAILS PER ISO13715  
 d. CORNERS SHOWN AS SHARP TO BE R.02 MAX.  
 e. LETTERING SHALL BE 0.15 MAX RAISED IN 0.25 MAX RECESS PAD. THIS INCLUDES RECYCLING CODE, CAVITY ID, VENDOR IDENTIFICATION, AND CUSTOMER MATERIAL NUMBER.  
 f. VISUAL DEFECTS SHALL MEET COSMETIC STANDARD PS-45499-002 (Class B)  
 g. LASER MARKING: TBD



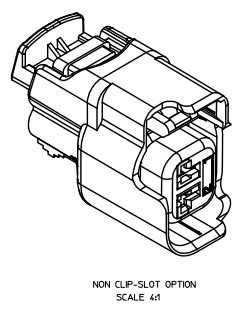
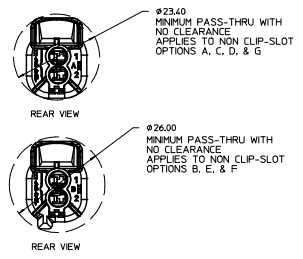
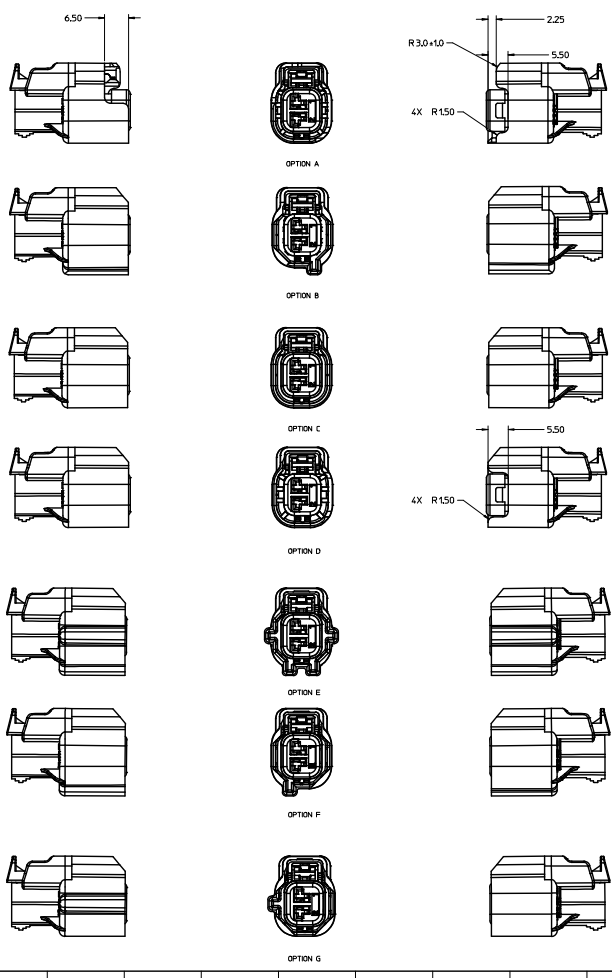
INSPECTION NUMBER LOG  
 LAST NUMBER USED: ICD 64  
 ADDED: ICD 64  
 REMOVED: ICD 7, ICD 8, ICD 9,  
 ICD 18, ICD 19, ICD 20, ICD 41, ICD 42

REV	DESCRIPTION
J18	ADDED DIM ICD 64

ENTER DESCRIPTION	QUALITY SYMBOLS	GENERAL TOLERANCES (UNLESS SPECIFIED)		DIMENSION STYLE		SCALE	DESIGN UNITS	THIRD ANGLE PROJECTION
		mm	INCH	MM ONLY	DATE			
EC: 0340620021	∇=0	4 PLACES ±----	±----	KCUNNINGHAM	2011/11/08	4:1	METRIC	MX150 2 WAY CABLE SEAL RECEPTACLE CONN. SYSTEM (5.0MM PITCH)
DRN: 0340620021	∇=0	3 PLACES ±----	±----	WANSIAMBROU	1/26/2012			
CHK: J18	∇=0	2 PLACES ±0.10	±----					
APP: J18	∇=0	1 PLACE ±0.3	±----					
REV: J18	∇=0	0 PLACE ±	±					
		ANGULAR ± 3 °		MATERIAL NO.		DOCUMENT NO.		SHEET NO.
		DRAFT WHERE APPLICABLE MUST REMAIN WITHIN DIMENSIONS		SEE NOTE 2a.		SD-34062-002		1 OF 5
		THIS DRAWING CONTAINS INFORMATION THAT IS PROPRIETARY TO MOLEX INCORPORATED AND SHOULD NOT BE USED WITHOUT WRITTEN PERMISSION						

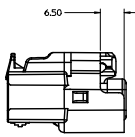
19 18 17 16 15 14 13 12 11 10 9 8 7 6 5 4 3 2 1

**SHEET DESCRIPTION**  
CONFIGURATIONS

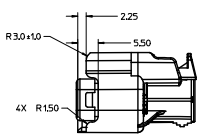


<b>ENTER DESCRIPTION</b> EC NO. VAL2016-1241 DRAWN BY: WANSIAMBROU / 2016/07/19 CHKD: J18 APPR: MANSOURI / 2016/07/22 REV:	QUALITY SYMBOLS ∇=0 ∇=0 ∇=0	GENERAL TOLERANCES (UNLESS SPECIFIED) <table border="1"> <thead> <tr> <th></th> <th>mm</th> <th>INCH</th> </tr> </thead> <tbody> <tr> <td>4 PLACES</td> <td>±0.15</td> <td>±0.005</td> </tr> <tr> <td>3 PLACES</td> <td>±0.20</td> <td>±0.008</td> </tr> <tr> <td>2 PLACES</td> <td>±0.30</td> <td>±0.012</td> </tr> <tr> <td>1 PLACE</td> <td>±0.50</td> <td>±0.020</td> </tr> <tr> <td>0 PLACE</td> <td>±0.75</td> <td>±0.030</td> </tr> </tbody> </table> ANGULAR ± 3° DRAFT WHERE APPLICABLE MUST REMAIN WITHIN DIMENSIONS		mm	INCH	4 PLACES	±0.15	±0.005	3 PLACES	±0.20	±0.008	2 PLACES	±0.30	±0.012	1 PLACE	±0.50	±0.020	0 PLACE	±0.75	±0.030	DIMENSION STYLE MM ONLY DRAWN BY: DATE KCUNNINGHAM 2011/11/08 CHECKED BY: DATE WANSIAMBROU 1/26/2012 APPROVED BY: DATE	SCALE 2:1 DESIGN UNITS METRIC THIRD ANGLE PROJECTION	TITLE MX150 2 WAY CABLE SEAL RECEPTACLE CONN. SYSTEM (5.0MM PITCH) <b>molex</b> DOCUMENT NO. SD-34062-002 SHEET NO. 2 OF 5
		mm	INCH																				
	4 PLACES	±0.15	±0.005																				
	3 PLACES	±0.20	±0.008																				
2 PLACES	±0.30	±0.012																					
1 PLACE	±0.50	±0.020																					
0 PLACE	±0.75	±0.030																					
MATERIAL NO. SEE NOTE 2a.	THIS DRAWING CONTAINS INFORMATION THAT IS PROPRIETARY TO MOLEX INCORPORATED AND SHOULD NOT BE USED WITHOUT WRITTEN PERMISSION																						
DRAFT WHERE APPLICABLE MUST REMAIN WITHIN DIMENSIONS																							
THIS DRAWING CONTAINS INFORMATION THAT IS PROPRIETARY TO MOLEX INCORPORATED AND SHOULD NOT BE USED WITHOUT WRITTEN PERMISSION																							

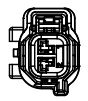
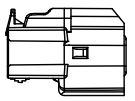
**SHEET DESCRIPTION**  
CONFIGURATIONS



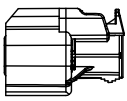
OPTION A WCLP-SLOT



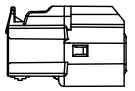
#25.50  
MINIMUM PASS-THRU WITH  
NO CLEARANCE  
APPLIES TO CLIP-SLOT  
OPTIONS A, C AND D



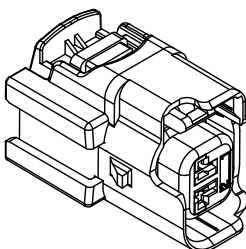
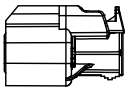
OPTION B WCLP-SLOT



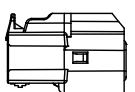
#26.00  
MINIMUM PASS-THRU WITH  
NO CLEARANCE  
APPLIES TO CLIP-SLOT  
OPTION B



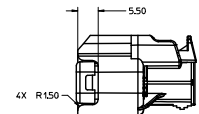
OPTION C WCLP-SLOT



CLIP-SLOT OPTION  
SCALE 4:1



OPTION D WCLP-SLOT



\*WITH CLIP-SLOT CONFIGURATIONS  
DO NOT MEET THE USCAR PACKAGING FRAME REQUIREMENTS

<b>ENTER DESCRIPTION</b> EC NO. UAL2006-1241 DRAWN BY: DORNAJIBORSKI 20/02/19 CHKD: [blank] APPR: [blank] J18	QUALITY SYMBOLS ∇=0 ∇=0 ∇=0	GENERAL TOLERANCES (UNLESS SPECIFIED): mm INCH 4 PLACES ±--- ±--- 3 PLACES ±--- ±--- 2 PLACES ±0.10 ±--- 1 PLACE ±0.3 ±--- 0 PLACE ± ±	DIMENSION STYLE MM ONLY DRAWN BY: KUNNINGHAM 2011/11/08 CHECKED BY: [blank] DATE: [blank] APPROVED BY: [blank] DATE: [blank]	SCALE 2:1 DESIGN UNITS METRIC	THIRD ANGLE PROJECTION		
		ANGULAR ±3°	MATERIAL NO.	SEE NOTE 2a.	DOCUMENT NO. SD-34062-002	SHEET NO. 3 OF 5	
		DRAFT WHERE APPLICABLE MUST REMAIN WITHIN DIMENSIONS	SIZE D	THIS DRAWING CONTAINS INFORMATION THAT IS PROPRIETARY TO MOLEX INCORPORATED AND SHOULD NOT BE USED WITHOUT WRITTEN PERMISSION			
		mox					

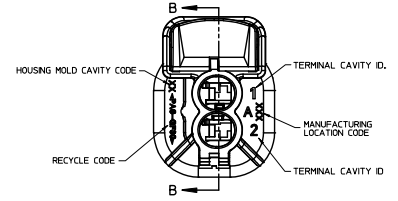
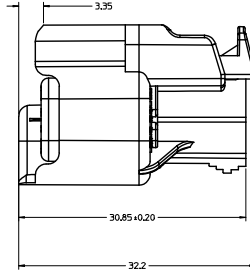
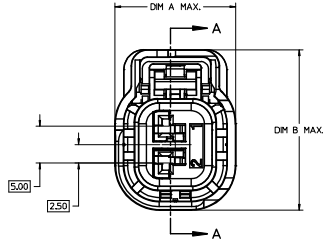
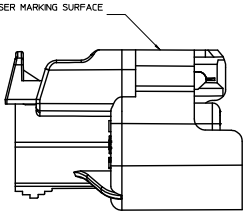
**SHEET DESCRIPTION**

RECEPTACLE CONNECTOR ASSEMBLY

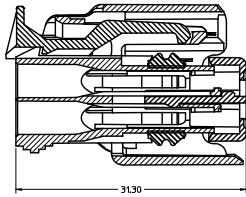
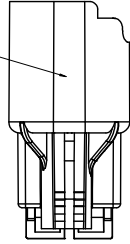
**CHARTED DIMENSIONS**

CONFIGURATIONS	DIMENSIONS	
	A	B
OPTIONS A, C, D	16.6	22.0
OPTION B	16.6	23.9
OPTION E	20.2	23.9
OPTION F	16.6	23.9
OPTION G	16.4	22.0
OPTIONS A, C, D W/CLIP-SLOT	19.2	22.0
OPTION B W/CLIP-SLOT	19.2	23.9

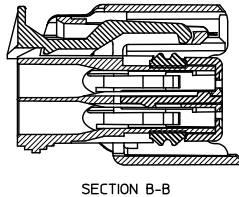
OPTIONAL LASER MARKING SURFACE  
SEE NOTE 3g



OPTIONAL LASER MARKING SURFACE  
SEE NOTE 3g

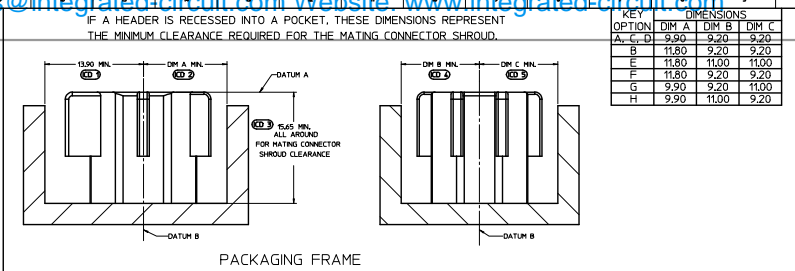
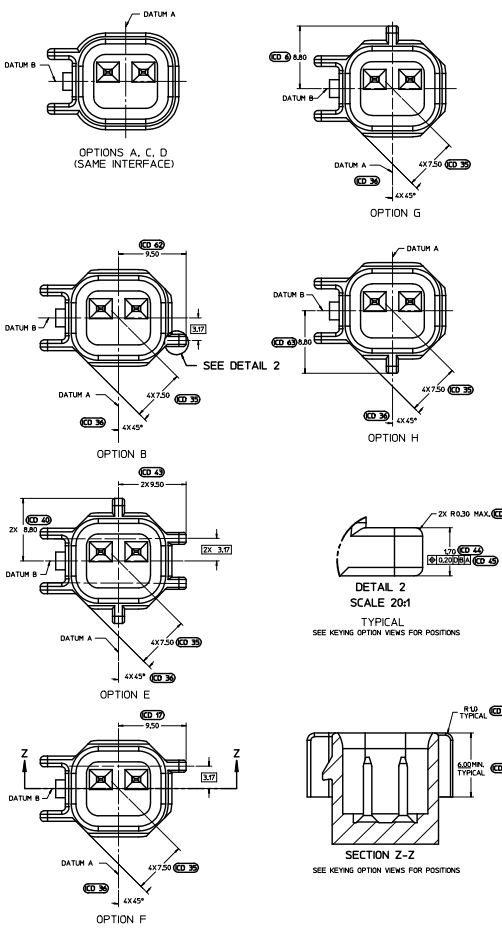


TPA SHOWN IN THE  
PRE-STAGED POSITION  
SECTION A-A

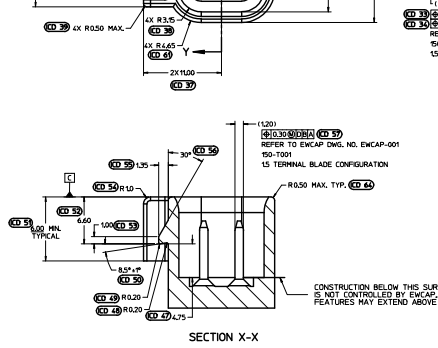
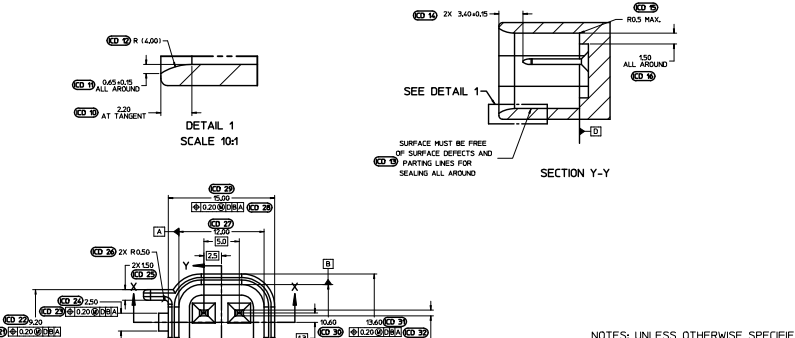
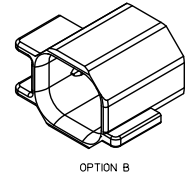


SECTION B-B  
TPA SHOWN IN  
FINAL-LOCK POSITION

<b>ENTER DESCRIPTION</b> EC NO. VAL2016-1241 DRAWING NUMBER: 0340620021/2016/02/19 CHKD: J18 APPR: [Signature] DATE: 2016/02/22	QUALITY SYMBOLS ∇=0 ∇=0 ∇=0	GENERAL TOLERANCES (UNLESS SPECIFIED) mm INCH 4 PLACES ± 0.15 ± 0.006 3 PLACES ± 0.25 ± 0.010 2 PLACES ± 0.50 ± 0.020 1 PLACE ± 0.75 ± 0.030 0 PLACE ± 1.50 ± 0.060 ANGULAR ± 3°	DIMENSION STYLE MM ONLY	SCALE 4:1	DESIGN UNITS METRIC	THIRD ANGLE PROJECTION	
	DRAWN BY: KCUNNINGHAM CHECKED BY: WVANSLAMBROU APPROVED BY: [Signature]	DATE: 2011/11/08 DATE: 1/26/2012 DATE:	MATERIAL NO. SEE NOTE 2a	DOCUMENT NO. SD-34062-002	TITLE MX150 2 WAY CABLE SEAL RECEPTACLE CONN. SYSTEM (5.0MM PITCH)	SHEET NO. 4 OF 5	
	DRAFT WHERE APPLICABLE MUST REMAIN WITHIN DIMENSIONS						
	THIS DRAWING CONTAINS INFORMATION THAT IS PROPRIETARY TO MOLEX INCORPORATED AND SHOULD NOT BE USED WITHOUT WRITTEN PERMISSION						



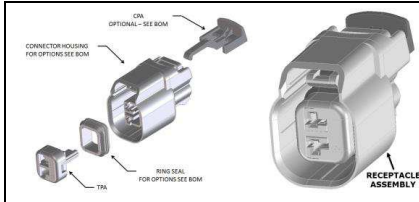
KEY	DIMENSIONS		
	OPTION	DIM A	DIM B
A, C, D	9.30	9.20	9.20
B	11.80	9.20	9.20
E	11.80	11.00	11.00
F	11.80	9.20	9.20
G	9.30	9.20	11.00
H	9.30	11.00	9.20



- NOTES: UNLESS OTHERWISE SPECIFIED
- ALL DIMENSIONS SHOWN IN MILLIMETERS.
  - DIMENSIONING AND TOLERANCING PER ASME Y14.5M-1994
  - 0.25 RADI ON ALL CORNERS SHOWN SHARP.
  - UNSPECIFIED RADII: 0.25 EXCEPT AS NOTED.
  - STANDARD COLORS FOR POLARIZATION (SEE CHART). DEVIATION REQUIRES APPROVAL OF AUTHORIZED PERSON.
  - REFER TO SAE/USCAR 12 CONNECTOR GUIDELINES FOR ADDITIONAL REQUIREMENTS.
  - EXCEPT WHERE NOTED, DRAFT ON OUTSIDE SURFACES IS PERMISSIBLE WITHIN TOLERANCE.
  - SYMBOL INDICATES DRAFT DIRECTION.
  - FOR TERMINAL MATERIAL, DIMENSIONAL, AND COATING REQUIREMENTS AND ANY BLADE TERMINAL DESIGN INFORMATION NOT SHOWN ON THIS DRAWING SEE EWCAP DWG. NO. EWCAP-001
  - A FULL SHROUD ON THE MATING CONNECTOR IS REQUIRED TO ENSURE THAT THE CONNECTOR-HEADER POLARIZATION FEATURES (OPTIONS A THRU H) WILL FUNCTION. THE FULL SHROUD ALSO PREVENTS SCOOP DAMAGE TO THE HEADER PINS. REFER TO SAE/USCAR-12 CONNECTOR DESIGN GUIDE LINES FOR ADDITIONAL INFORMATION.
  - REFER TO USCAR/EWCAP PART LIST AS FOUND ON WEBSITE <http://www.uscarteams.org>
  - THIS IS A 100% CAD GENERATED PART. THE CAD MATHEMATICAL DATA IS THE MASTER FOR THIS PART. FOR DIMENSIONAL OR ANY INFORMATION NOT SHOWN ON THIS DRAWING, ANALYZE THE CAD MODEL.

A, C, D	BLACK	A	
B	LIGHT GRAY	B	
E	BLACK	E	NOT RECOMMENDED
F	LIGHT GRAY	D	MATING CONNECTOR IS UNIVERSAL
G	BLACK	C	
H	LIGHT GRAY	F	
OPTION	COLOR	SIMILAR TO AFL DRAWING R63461 (OPTION GEOMETRY IDENTICAL)	COMMENTS

QUALITY SYMBOLS	GENERAL TOLERANCES (UNLESS SPECIFIED)		DESIGN STYLE	SCALE	DESIGN UNITS	THIRD ANGLE
	mm	INCH	MM ONLY	S:1	METRIC	PROJECTION
	4 PLACES	---	DATE			
	3 PLACES	---	DRAWN BY			
	2 PLACES	---	DATE			
	1 PLACE	---	APPROVED BY			
	0 PLACE	---	DATE			



ABBREVIATION	DESCRIPTION	DRAWING INFORMATION	ADDITIONAL INFORMATION
1	USCAR INTERFACE	150-S-002-1-001	LEGAL
2	MOLEX INTERFACE	SD-3402-002 SHEET 5	
3	MOLEX INLINE MALE CONNECTOR	E-34675-003	

ABBREVIATION	DESCRIPTION	COLOR	MATERIAL
A-BLK	HOUSING OPTION A	BLACK	PAGE 02/30
B-LG	HOUSING OPTION B	LIGHT GRAY	PAGE 02/30
C-BLK	HOUSING OPTION C	BLACK	PAGE 02/30
D-BLK	HOUSING OPTION D	BLACK	PAGE 02/30
E-LG	HOUSING OPTION E	LIGHT GRAY	PAGE 02/30
F-BLK	HOUSING OPTION F	BLACK	PAGE 02/30
G-LG	HOUSING OPTION G	LIGHT GRAY	PAGE 02/30
A-BLK-CLIP	HOUSING OPTION A WITH CLIP/SLIP	BLACK	PAGE 02/30
B-LG-CLIP	HOUSING OPTION B WITH CLIP/SLIP	LIGHT GRAY	PAGE 02/30
C-BLK-CLIP	HOUSING OPTION C WITH CLIP/SLIP	BLACK	PAGE 02/30
D-BLK-CLIP	HOUSING OPTION D WITH CLIP/SLIP	BLACK	PAGE 02/30
E-LG-CLIP	HOUSING OPTION E WITH CLIP/SLIP	LIGHT GRAY	PAGE 02/30
F-BLK-CLIP	HOUSING OPTION F WITH CLIP/SLIP	BLACK	PAGE 02/30
G-LG-CLIP	HOUSING OPTION G WITH CLIP/SLIP	LIGHT GRAY	PAGE 02/30
D-BLK-SV	HOUSING OPTION D - SEVERE VIBRATION	BLACK	PAGE 02/30
D-BLK-SV	HOUSING OPTION D - SEVERE VIBRATION	BLACK	PAGE 02/30
RI	RING SEAL TEMP CLASS 1	MEDIUM BLUE	INHERENTLY LUBRICATED SILICONE
RII	RING SEAL TEMP CLASS 2	GREEN	INHERENTLY LUBRICATED SILICONE
TR4	INSTR. TPA	NATURAL	PAGE 02/30

FOR ADDITIONAL INFORMATION SEE SD-3402-002

ASSEMBLY DESCRIPTION	ASSEMBLY PART NUMBER	COMPONENT					ASSEMBLY OPERATING TEMPERATURE	RECOMMENDED MATING DEVICE			PRODUCTION TOOL STATUS	COMMENTS
		THE PRESENCE OF AN ABBREVIATION INDICATES THE PRESENCE OF THAT COMPONENT.						1	2	3		
		HOUSING OPTION/COLOR	TPA	CPA	RING SEAL							
OPTION A, BLACK, W/O CPA	3402-0021	A-BLK	TPA		RI	40°C TO 120°C	0	2		1	SALEABLE	PREFERRED, FULLY SHROUDED
OPTION B, LIGHT GRAY, W/O CPA	3402-0022	B-LG	TPA		RI	40°C TO 120°C	0	2		1	SALEABLE	PREFERRED, FULLY SHROUDED
OPTION C, BLACK, W/O CPA	3402-0023	C-BLK	TPA		RI	40°C TO 120°C	0	2		1	SALEABLE	PREFERRED, FULLY SHROUDED
OPTION D, BLACK, W/O CPA	3402-0024	D-BLK	TPA		RI	40°C TO 120°C	0	2		1	SALEABLE	PREFERRED, FULLY SHROUDED
OPTION E, LIGHT GRAY, W/O CPA	3402-0025	E-LG	TPA		RI	40°C TO 120°C	0	2		1	SALEABLE	PREFERRED, FULLY SHROUDED
OPTION A, BLACK, W/ CPA	3402-0026	A-BLK	TPA	CPA	RI	40°C TO 120°C	0	2		1	SALEABLE	PREFERRED, FULLY SHROUDED
OPTION B, LIGHT GRAY, W/ CPA	3402-0027	B-LG	TPA	CPA	RI	40°C TO 120°C	0	2		1	SALEABLE	PREFERRED, FULLY SHROUDED
OPTION C, BLACK, W/ CPA	3402-0028	C-BLK	TPA	CPA	RI	40°C TO 120°C	0	2		1	SALEABLE	PREFERRED, FULLY SHROUDED
OPTION D, BLACK, W/ CPA	3402-0029	D-BLK	TPA	CPA	RI	40°C TO 120°C	0	2		1	SALEABLE	PREFERRED, FULLY SHROUDED
OPTION E, LIGHT GRAY, W/ CPA	3402-0030	E-LG	TPA	CPA	RI	40°C TO 120°C	0	2		1	SALEABLE	PREFERRED, FULLY SHROUDED
OPTION A, BLACK, WITH CLIP/SLIP, W/O CPA	3402-0031	A-BLK-CLIP	TPA		RI	40°C TO 120°C	0	2		1	SALEABLE	PREFERRED, FULLY SHROUDED
OPTION B, LIGHT GRAY, WITH CLIP/SLIP, W/O CPA	3402-0032	B-LG-CLIP	TPA		RI	40°C TO 120°C	0	2		1	SALEABLE	PREFERRED, FULLY SHROUDED
OPTION C, BLACK, WITH CLIP/SLIP, W/O CPA	3402-0033	C-BLK-CLIP	TPA		RI	40°C TO 120°C	0	2		1	SALEABLE	PREFERRED, FULLY SHROUDED
OPTION D, BLACK, WITH CLIP/SLIP, W/O CPA	3402-0034	D-BLK-CLIP	TPA		RI	40°C TO 120°C	0	2		1	SALEABLE	PREFERRED, FULLY SHROUDED
OPTION E, LIGHT GRAY, WITH CLIP/SLIP, W/O CPA	3402-0035	E-LG-CLIP	TPA		RI	40°C TO 120°C	0	2		1	SALEABLE	PREFERRED, FULLY SHROUDED
OPTION A, BLACK, WITH CLIP/SLIP, W/ CPA	3402-0036	A-BLK-CLIP	TPA	CPA	RI	40°C TO 120°C	0	2		1	SALEABLE	PREFERRED, FULLY SHROUDED
OPTION B, LIGHT GRAY, WITH CLIP/SLIP, W/ CPA	3402-0037	B-LG-CLIP	TPA	CPA	RI	40°C TO 120°C	0	2		1	SALEABLE	PREFERRED, FULLY SHROUDED
OPTION C, BLACK, WITH CLIP/SLIP, W/ CPA	3402-0038	C-BLK-CLIP	TPA	CPA	RI	40°C TO 120°C	0	2		1	SALEABLE	PREFERRED, FULLY SHROUDED
OPTION D, BLACK, WITH CLIP/SLIP, W/ CPA	3402-0039	D-BLK-CLIP	TPA	CPA	RI	40°C TO 120°C	0	2		1	SALEABLE	PREFERRED, FULLY SHROUDED
OPTION E, LIGHT GRAY, WITH CLIP/SLIP, W/ CPA	3402-0040	E-LG-CLIP	TPA	CPA	RI	40°C TO 120°C	0	2		1	SALEABLE	PREFERRED, FULLY SHROUDED
OPTION A, BLACK, SEVERE VIBRATION, W/ CPA	3402-0041	A-BLK-SV	TPA	CPA	RI	40°C TO 120°C	0	2		1	SALEABLE	PREFERRED, FULLY SHROUDED
OPTION B, LIGHT GRAY, SEVERE VIBRATION, W/ CPA	3402-0042	B-LG-SV	TPA	CPA	RI	40°C TO 120°C	0	2		1	SALEABLE	PREFERRED, FULLY SHROUDED
OPTION C, BLACK, SEVERE VIBRATION, W/ CPA	3402-0043	C-BLK-SV	TPA	CPA	RI	40°C TO 120°C	0	2		1	SALEABLE	PREFERRED, FULLY SHROUDED
OPTION D, BLACK, SEVERE VIBRATION, W/ CPA	3402-0044	D-BLK-SV	TPA	CPA	RI	40°C TO 120°C	0	2		1	SALEABLE	PREFERRED, FULLY SHROUDED
OPTION E, LIGHT GRAY, SEVERE VIBRATION, W/ CPA	3402-0045	E-LG-SV	TPA	CPA	RI	40°C TO 120°C	0	2		1	SALEABLE	PREFERRED, FULLY SHROUDED
OPTION A, BLACK, W/ CPA	3402-0046	A-BLK	TPA	CPA	RI	40°C TO 120°C	0	2		1	SALEABLE	PREFERRED, FULLY SHROUDED
OPTION B, LIGHT GRAY, W/ CPA	3402-0047	B-LG	TPA	CPA	RI	40°C TO 120°C	0	2		1	SALEABLE	PREFERRED, FULLY SHROUDED
OPTION C, BLACK, W/ CPA	3402-0048	C-BLK	TPA	CPA	RI	40°C TO 120°C	0	2		1	SALEABLE	PREFERRED, FULLY SHROUDED
OPTION D, BLACK, W/ CPA	3402-0049	D-BLK	TPA	CPA	RI	40°C TO 120°C	0	2		1	SALEABLE	PREFERRED, FULLY SHROUDED
OPTION E, LIGHT GRAY, W/ CPA	3402-0050	E-LG	TPA	CPA	RI	40°C TO 120°C	0	2		1	SALEABLE	PREFERRED, FULLY SHROUDED
OPTION A, BLACK, WITH CLIP/SLIP, W/O CPA	3402-0051	A-BLK	TPA		RI	40°C TO 120°C	0	2		1	SALEABLE	PREFERRED, FULLY SHROUDED
OPTION B, LIGHT GRAY, WITH CLIP/SLIP, W/O CPA	3402-0052	B-LG-CLIP	TPA		RI	40°C TO 120°C	0	2		1	SALEABLE	PREFERRED, FULLY SHROUDED
OPTION C, BLACK, WITH CLIP/SLIP, W/O CPA	3402-0053	C-BLK-CLIP	TPA		RI	40°C TO 120°C	0	2		1	SALEABLE	PREFERRED, FULLY SHROUDED
OPTION D, BLACK, WITH CLIP/SLIP, W/O CPA	3402-0054	D-BLK-CLIP	TPA		RI	40°C TO 120°C	0	2		1	SALEABLE	PREFERRED, FULLY SHROUDED
OPTION E, LIGHT GRAY, WITH CLIP/SLIP, W/O CPA	3402-0055	E-LG-CLIP	TPA		RI	40°C TO 120°C	0	2		1	SALEABLE	PREFERRED, FULLY SHROUDED
OPTION A, BLACK, SEVERE VIBRATION, W/ CPA	3402-0056	A-BLK-SV	TPA	CPA	RI	40°C TO 120°C	0	2		1	SALEABLE	PREFERRED, FULLY SHROUDED
OPTION B, LIGHT GRAY, SEVERE VIBRATION, W/ CPA	3402-0057	B-LG-SV	TPA	CPA	RI	40°C TO 120°C	0	2		1	SALEABLE	PREFERRED, FULLY SHROUDED
OPTION C, BLACK, SEVERE VIBRATION, W/ CPA	3402-0058	C-BLK-SV	TPA	CPA	RI	40°C TO 120°C	0	2		1	SALEABLE	PREFERRED, FULLY SHROUDED
OPTION D, BLACK, SEVERE VIBRATION, W/ CPA	3402-0059	D-BLK-SV	TPA	CPA	RI	40°C TO 120°C	0	2		1	SALEABLE	PREFERRED, FULLY SHROUDED
OPTION E, LIGHT GRAY, SEVERE VIBRATION, W/ CPA	3402-0060	E-LG-SV	TPA	CPA	RI	40°C TO 120°C	0	2		1	SALEABLE	PREFERRED, FULLY SHROUDED