

Excellent Integrated System Limited

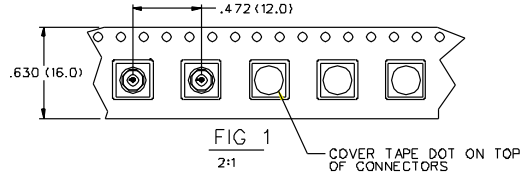
Stocking Distributor

Click to view price, real time Inventory, Delivery & Lifecycle Information:

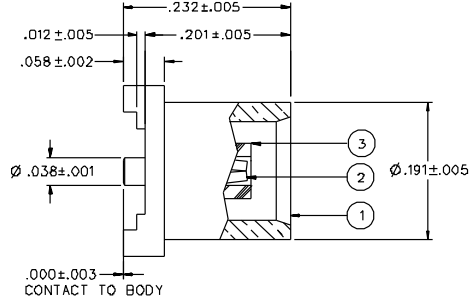
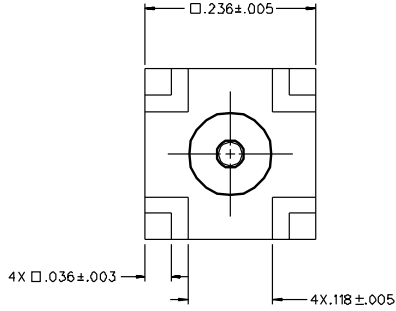
[Bel Fuse Inc.](#)
[133-3711-212](#)

For any questions, you can email us directly:
sales@integrated-circuit.com

| PART NUMBER | ITEM ① BODY | ITEM ② CONTACT | ITEM ③ INSULATOR | PACKAGING |
|--------------|---|--|---------------------|--|
| 133-3711-211 | BRASS GOLD PL .00001 MIN OVER NICKEL PL .00005 MIN OVER COPPER PL .00005 MIN | BERYLLIUM COPPER GOLD PL .00003 MIN OVER NICKEL PL .00005 MIN OVER COPPER PL .00005 MIN | TEFLON | BULK PACK 25 PCS |
| 133-3711-212 | BRASS GOLD PL .00001 MIN OVER NICKEL PL .00005 MIN OVER COPPER PL .00005 MIN | BERYLLIUM COPPER GOLD PL .00003 MIN OVER NICKEL PL .00005 MIN OVER COPPER PL .00005 MIN | TEFLON | TAPE AND REEL 750 PCS. PER FIG 1 |
| 133-3711-217 | BRASS TIN PL .00015 MIN OVER NICKEL PL .00003 MIN OVER COPPER PL .00003 MIN | BERYLLIUM COPPER GOLD PL .00003 MIN OVER NICKEL PL .00005 MIN OVER COPPER PL .00005 MIN | TEFLON | BULK PACK 25 PCS |
| 133-3711-218 | BRASS TIN PL .00015 MIN OVER NICKEL PL .00003 MIN OVER COPPER PL .00003 MIN | BERYLLIUM COPPER GOLD PL .00003 MIN OVER NICKEL PL .00005 MIN OVER COPPER PL .00005 MIN | TEFLON | TAPE AND REEL 750 PCS. PER FIG 1 |



| | |
|--|----------------------------|
| DRAWING NO. C - 133-3711-211/220 | |
| 0 REVISIONS | |
| ENGINEERING RELEASE | |
| 1 | 10-14-98 R J B E C N 45963 |
| CHANGED: 750 PCS WAS 500 PCS | |
| 10 | 11-24-98 R J B E C N 46030 |
| CONTACT RETENTION 2.3 LBS MIN WAS 4.0, 5.8 LBS MAX ENGAGE WAS 3.4 LBS TO 8.0 LBS DISENGAGE WAS 2.25 / 4.5. | |
| * REVISION NUMBER FOLLOWED BY AN ALPHA * * QUANTITY INDICATED DRAWING CLERE * * CATION OR PART NUMBER ADDITION ONLY * ***** | |
| 10 | 1-2-01 R J B E C N 47548 |

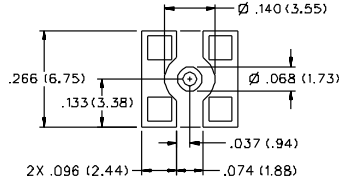


NOTES:

1. SPECIFICATIONS:

- IMPEDANCE: 50 OHMS
- FREQUENCY RANGE: 0-6 GHz
- VSWR: NOT APPLICABLE
- WORKING VOLTAGE: 335 VRMS MAX AT SEA LEVEL
- DIELECTRIC WITHSTANDING VOLTAGE: 1000 VRMS MIN AT SEA LEVEL
- INSULATION RESISTANCE: 10000 MEGOHM MIN
- CONTACT RESISTANCE:
 - CENTER CONTACT - INITIAL 5 MILLIOHM MAX, AFTER ENVIRONMENTAL 8 MILLIOHM MAX
 - OUTER CONDUCTOR - GOLD PLATED INITIAL 1 MILLIOHM MAX, AFTER ENVIRONMENTAL 1.5 MILLIOHM MAX, NICKEL PLATED INITIAL 2.5 MILLIOHM MAX, AFTER ENVIRONMENTAL 3.5 MILLIOHM MAX
- BRAID TO BODY - NOT APPLICABLE
- CORONA LEVEL: 250 VOLTS MINIMUM AT 70,000 FEET
- INSERTION LOSS: NOT APPLICABLE
- RF LEAKAGE: NOT APPLICABLE
- RF HIGH POTENTIAL WITHSTANDING VOLTAGE: 600 VRMS AT 4 AND 7 MHZ
- MECHANICAL:
 - ENGAGE/DISENGAGE FORCE: 5.6 LBS MAX ENGAGEMENT, 1.0 LB MIN DISENGAGEMENT, 8.0 LBS MAX DISENGAGEMENT
 - CONTACT RETENTION FORCE: 2.3 LBS MIN
 - CONTACT RETENTION TORQUE: NOT APPLICABLE
 - COUPLING MECHANISM RETENTION: NOT APPLICABLE
 - CABLE ACCEPTABILITY: NOT APPLICABLE
 - CABLE HEX CRIMP SIZE: NOT APPLICABLE
 - CABLE RETENTION: NOT APPLICABLE
 - DURABILITY: 5DD CYCLES MIN
- ENVIRONMENTAL:
 - (MEETS OR EXCEEDS THE APPLICABLE PARAGRAPH OF MIL-C-39012)
 - THERMAL SHOCK: MIL-STD-202, METHOD 107, CONDITION F
 - OPERATING TEMPERATURE: -65 DEG C TO 165 DEG C
 - CORROSION: MIL-STD-202, METHOD 101, CONDITION B
 - SHOCK: MIL-STD-202, METHOD 213, CONDITION B
 - VIBRATION: MIL-STD-202, METHOD 204, CONDITION B
 - MOISTURE RESISTANCE: MIL-STD-202, METHOD 106

RECOMMENDED SOLDER LAND PATTERN *



* NOTE: THIS PATTERN IS FOR REFERENCE ONLY. PATTERN MAY VARY DEPENDING ON ASSEMBLY PROCESS, BOARD TYPE OR SPECIFIC ELECTRICAL OR MECHANICAL REQUIREMENTS.

CUSTOMER DRAWING

THIS DRAWING TO BE INTERPRETED PER ANSI Y 14.5M - 1982

"µSTATION"

COMPANY CONFIDENTIAL

| | | | |
|--------------------------------------|--------------------|------------------|--|
| TOLERANCE UNLESS OTHERWISE SPECIFIED | DRAWN BY RJB | DATE 9-25-98 | <small>Quick Connectivity Solutions 299 Johnson Ave. Ste 100 Waukegan, IL 60087 1-800-247-8226</small> |
| DECIMALS .XX | CHECKED BY | DATE | |
| MIL | APPROVED BY RJB | DATE 10-16-98 | TITLE JACK ASSEMBLY STRAIGHT SURFACE MOUNT MCX |
| FINISH | APPROVED BY | DATE | CODE NO. |
| | RELEASE DATE | | DRAWING NO. C - 133-3711-211/220 |
| | | | SCALE 10:1 U/M INCH SHEET 2 OF 2 |