

Excellent Integrated System Limited

Stocking Distributor

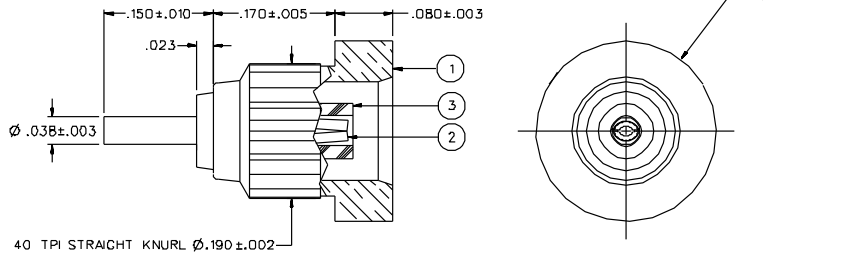
Click to view price, real time Inventory, Delivery & Lifecycle Information:

[Bel Fuse Inc.](#)
[133-3701-416](#)

For any questions, you can email us directly:
sales@integrated-circuit.com

| PART NUMBER | ITEM ① BODY | ITEM ② CONTACT | ITEM ③ INSULATOR |
|--------------|---|--|---------------------|
| 133-3701-411 | BRASS GOLD PL .00001 MIN OVER NICKEL PL .00005 MIN OVER COPPER PL .00005 MIN | BERYLLIUM COPPER GOLD PL .00003 MIN OVER NICKEL PL .00005 MIN OVER COPPER PL .00005 MIN | TEFLON |
| 133-3701-416 | BRASS NICKEL PL .0001 MIN OVER COPPER PL .00005 MIN | BERYLLIUM COPPER GOLD PL .00003 MIN OVER NICKEL PL .00005 MIN OVER COPPER PL .00005 MIN | TEFLON |

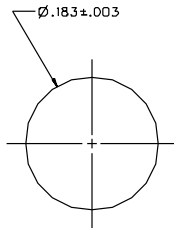
| | | | |
|---|----------|---|-----------|
| DRAWING NO. C - 133-3701-411/420 | | | |
| 0 REVISIONS | | | |
| ENGINEERING RELEASE | | | |
| 1 | 10-30-95 | R | 11-14-95 |
| CHANGED: 4.0 TPI WAS 30 TPI | | | |
| 1a | 11-9-98 | R | ECN 46025 |
| CONTACT RETENTION 2.3 LBS MIN WAS 4.0 MAX ENGAGE 5.6 LBS WAS 3.4, DISENGAGE 1.0 / B.D LBS WAS 3.0 LBS TYPICAL, DETAIL INTERFACE PER DECC 22220 DETAIL | | | |
| * REVISION NUMBER FOLLOWED BY AN ALPHABETIC CHARACTER INDICATES DRAWING CLASSIFICATION * * CAUTION ON PART NUMBER ADDITION ONLY. * | | | |
| 1b | 12-21-00 | A | ECN 47538 |



NOTES:

1. SPECIFICATIONS:

IMPEDANCE: 50 OHMS
 FREQUENCY RANGE: 0-6 GHz
 VSWR: NOT APPLICABLE
 WORKING VOLTAGE: 335 VRMS MAX AT SEA LEVEL
 DIELECTRIC WITHSTANDING VOLTAGE: 1000 VRMS MIN AT SEA LEVEL
 INSULATION RESISTANCE: 10000 MEGOHM MIN
 CONTACT RESISTANCE:
 CENTER CONTACT - INITIAL 5 MILLIOHM MAX, AFTER ENVIRONMENTAL 8 MILLIOHM MAX
 OUTER CONDUCTOR - GOLD PLATED INITIAL 1 MILLIOHM MAX, AFTER ENVIRONMENTAL 1.5 MILLIOHM MAX
 NICKEL PLATED INITIAL 2.5 MILLIOHM MAX, AFTER ENVIRONMENTAL 3.5 MILLIOHM MAX
 BRAND TO BODY - NOT APPLICABLE
 CORONA LEVEL: 250 VOLTS MINIMUM AT 70,000 FEET
 INSERTION LOSS: NOT APPLICABLE
 RF LEAKAGE: NOT APPLICABLE
 RF HIGH POTENTIAL WITHSTANDING VOLTAGE: 600 VRMS AT 4 AND 7 MHZ
 MECHANICAL:
 ENGAGE/DISENGAGE FORCE: 5.6 LBS MAX ENGAGEMENT
 1.0 LB MIN DISENGAGEMENT
 8.0 LBS MAX DISENGAGEMENT
 CONTACT RETENTION FORCE: 2.3 LBS MIN
 CONTACT RETENTION TORQUE: NOT APPLICABLE
 COUPLING MECHANISM RETENTION: NOT APPLICABLE
 CABLE ACCEPTABILITY: NOT APPLICABLE
 CABLE HEX CRIMP SIZE: NOT APPLICABLE
 CABLE RETENTION: NOT APPLICABLE
 DURABILITY: 500 CYCLES MIN
 ENVIRONMENTAL:
 (MEETS OR EXCEEDS THE APPLICABLE PARAGRAPH OF MIL-C-39012)
 THERMAL SHOCK: MIL-STD-202, METHOD 107, CONDITION F
 OPERATING TEMPERATURE: -65 DEC C TO 165 DEC C
 CORROSION: MIL-STD-202, METHOD 101, CONDITION B
 SHOCK: MIL-STD-202, METHOD 213, CONDITION B
 VIBRATION: MIL-STD-202, METHOD 204, CONDITION B
 MOISTURE RESISTANCE: MIL-STD-202, METHOD 106



RECOMMENDED MOUNTING HOLE

CUSTOMER DRAWING

THIS DRAWING TO BE INTERPRETED PER ANSI Y 14.5M - 1982

"µSTATION"

COMPANY CONFIDENTIAL

| | | | |
|--------------------------------------|--------------------------|------------------|---|
| TOLERANCE UNLESS OTHERWISE SPECIFIED | DRAWN BY SWC | DATE 10-25-95 | <small>Crush Connectivity Solutions 299 Johnson Ave. Ste. 100 Worcester, MA 01603 1-800-247-8226</small> |
| DECIMALS: .XX | CHECKED BY SWC | DATE 11-2-95 | |
| REF: .XXX | APPROVED BY TAK | DATE 11-10-95 | TITLE JACK ASSEMBLY BULKHEAD RECEPTACLE MCX |
| MATERIAL | APPROVED BY RUB | DATE 11-10-95 | CODE NO. |
| FINISH | RELEASE DATE 11-14-95 | | DRAWING NO. C - 133-3701-411/420 |
| | | | SCALE 10:1 U/N INCH SHEET 2 OF 2 |