

## Excellent Integrated System Limited

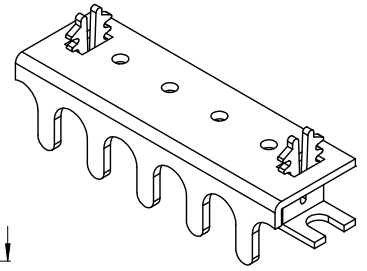
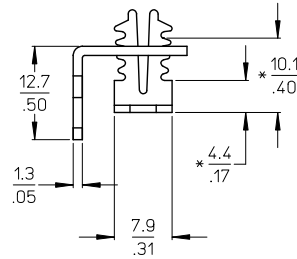
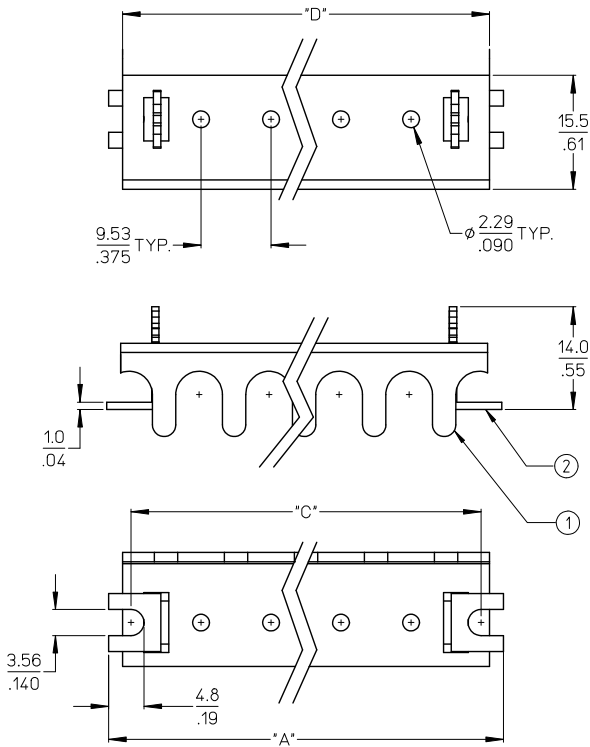
Stocking Distributor

Click to view price, real time Inventory, Delivery & Lifecycle Information:

[Molex Connector Corporation](#)  
[0387536718](#)

For any questions, you can email us directly:

[sales@integrated-circuit.com](mailto:sales@integrated-circuit.com)



NOTES:

1. MATERIAL: SEE TABLE.
2. FINISHES: SEE TABLE.
3. PRODUCT SPECIFICATION: AS REQUIRED.
4. MATES WITH: 75 SERIES BTS.
5. (\*) DIMENSIONS INDICATE MAX. AND MIN. COVER HEIGHT.
6. ROHS COMPLIANT.

ITEM	QTY.	DESCRIPTION	MATERIAL	FINISH
2	2	COVER CLIPS AS MO	ACETAL	NATURAL
1	1	COVER W-A-R CUTTH	PBT POLYESTER	BLACK

UPDATE DIM. A & D	2008/12/18
EC NO: WNA2009-0356	2008/01/15
DRAWN: JENCINAS	2009/07/15
CHKD: CYORK	
APPR: JMACNEIL	

QUALITY SYMBOLS	DESCRIPTION
▽=0	
▽=0	

GENERAL TOLERANCES (UNLESS SPECIFIED)	
mm	INCH
4 PLACES ± .005	± .0005
3 PLACES ± .01	± .001
2 PLACES ± 0.13	± .01
1 PLACE ± 0.3	± .01
ANGULAR ± 2°	

DIMENSION STYLE	
MM/IN	SCALE
MM/IN	2:1

SCALE	DESIGN UNITS	THIRD ANGLE PROJECTION
2:1	INCH	THIRD ANGLE PROJECTION

DRAWN BY	DATE
JENCINAS	2008/05/13
CHECKED BY	DATE
CYORK	2008/05/14
APPROVED BY	DATE
JMACNEIL	2008/05/16

MOLEX INCORPORATED		SHEET NO.
SD-38753-001		1 OF 2

DRAFT WHERE APPLICABLE MUST REMAIN WITHIN DIMENSIONS

SEE CHART

THIS DRAWING CONTAINS INFORMATION THAT IS PROPRIETARY TO MOLEX INCORPORATED AND SHOULD NOT BE USED WITHOUT WRITTEN PERMISSION

10 9 8 7 6 5 4 3 2 38753

NO. OF CIRCUITS	DIM. "A"		DIM. "C"		DIM. "D"		KIT MATERIAL
	mm	in	mm	in	mm	in	
02	34.7	1.37	28.58	1.125	30.7	1.21	387536702
03	44.2	1.74	38.10	1.500	40.3	1.59	387536703
04	53.7	2.12	47.63	1.875	49.8	1.96	387536704
05	63.2	2.49	57.15	2.250	59.3	2.34	387536705
06	72.8	2.87	66.68	2.625	68.8	2.71	387536706
07	82.3	3.24	76.20	3.000	78.4	3.09	387536707
08	91.8	3.62	85.73	3.375	87.9	3.46	387536708
09	101.3	3.99	95.25	3.750	97.4	3.84	387536709
10	110.9	4.37	104.78	4.125	106.9	4.21	387536710
11	120.4	4.74	114.30	4.500	116.5	4.59	387536711
12	129.9	5.12	123.83	4.875	126.0	4.96	387536712
13	139.4	5.49	133.35	5.250	135.5	5.34	387536713
14	149.0	5.87	142.88	5.625	145.0	5.71	387536714
15	158.5	6.24	152.40	6.000	154.6	6.09	387536715
16	168.0	6.62	161.93	6.375	164.1	6.46	387536716
17	177.5	6.99	171.45	6.750	173.6	6.84	387536717
18	187.1	7.37	180.98	7.125	183.1	7.21	387536718
19	196.6	7.74	190.50	7.500	192.7	7.59	387536719
20	206.1	8.12	200.03	7.875	202.2	7.96	387536720
21	215.6	8.49	209.55	8.250	211.7	8.34	387536721
22	225.2	8.87	219.08	8.625	221.2	8.71	387536722
23	234.7	9.24	228.60	9.000	230.8	9.09	387536723
24	244.2	9.62	238.13	9.375	240.3	9.46	387536724
25	253.7	9.99	247.65	9.750	249.8	9.84	387536725
26	263.3	10.37	257.18	10.125	259.3	10.21	387536726

SEE SHEET ONE EC NO: WNA2009-0356 DRAWN BY: JENC INAS 2008/12/18 CHECKED BY: CYORK 2009/01/15 APPR: JMACNE IL 2009/01/15 REV:	QUALITY SYMBOLS	GENERAL TOLERANCES (UNLESS SPECIFIED) mm INCH 4 PLACES ± .005 ± .005 3 PLACES ± .005 ± .005 2 PLACES ± 0.13 ± .01 1 PLACE ± 0.3 ± .01 ANGULAR ± 2° DRAFT WHERE APPLICABLE MUST REMAIN WITHIN DIMENSIONS	DIMENSION STYLE	SCALE	DESIGN UNITS	THIRD ANGLE PROJECTION	
	DESCRIPTION		MM/IN	2:1	INCH		
			DRAWN BY DATE	JENC INAS 2008/05/13	TITLE	COVER SR BTS KIT, W-A-R CUTTH	
			CHECKED BY DATE	CYORK 2008/05/14	APPROVED BY DATE	MOLEX INCORPORATED MATERIAL NO. SD-38753-001 DOCUMENT NO. SD-38753-001 SHEET NO. 2 OF 2	

9 8 7 6 5 4 3 2 1