



Distributor of Panduit: Excellent Integrated System Limited

Datasheet of D14-250MB-C - Connector Quick Connect Tab 14-16 AWG 0.250" (6.35mm)
Crimp

Contact us: sales@integrated-circuit.com Website: www.integrated-circuit.com

Excellent Integrated System Limited

Stocking Distributor

Click to view price, real time Inventory, Delivery & Lifecycle Information:

[Panduit](#)

[D14-250MB-C](#)

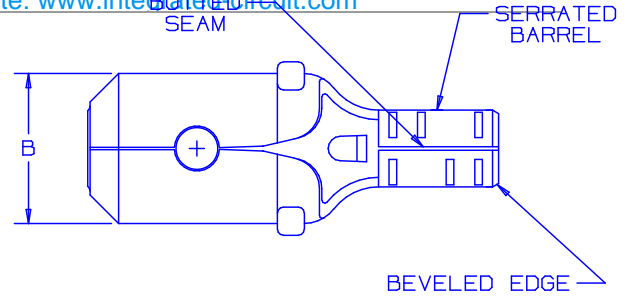
For any questions, you can email us directly:

sales@integrated-circuit.com

THIS COPY IS PROVIDED ON A RESTRICTED BASIS AND IS NOT TO BE USED IN ANY WAY DETRIMENTAL TO THE INTERESTS OF PANDUIT CORP.

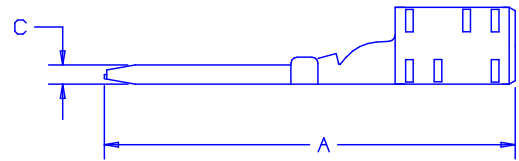
Contact us: sales@integrated-circuit.com Website: www.integrated-circuit.com

PART NUMBER	WIRE RANGE AWG	DIMENSIONS in.		
		A $\pm .02$	B $\pm .01$	C $\pm .01$
D18-250MB	22-18	.69 (17.4)	.25 (6.3)	.03 (0.76)
D14-250MB	16-14	.69 (17.4)	.25 (6.3)	.03 (0.76)



NOTES:

- USED FOR:
A. 302° F (150 C) MAX. TEMP RATING
B. STRANDED COPPER WIRE ONLY
- MATERIAL:
STAMPING - .016" (.406) THK BRASS,
NICKEL PLATED.
- PACKAGE QTY: STD. PKG. - C = 100
BULK PKG. - M = 1000
- DIMENSIONS IN BRACKETS ARE IN MILLIMETERS
- INSTALLATION TOOLS: CT-100, CT-200.
- WIRE STRIP LENGTH: $9/32 \begin{matrix} +1/32 \\ -0 \end{matrix} (7.1 \begin{matrix} +0.8 \\ -0 \end{matrix})$



07	2/04	JHNU		REVISED NOTE 5: ADDED CT-200.	11533					A41320_07	
06	8/97	TM	RJS	ADDED NOTE #6, WAS TIN PLATED	06105	LA	DH				
05	2/96	ED		REVISED NOTES, TABLE, & BARREL DESIGN FILESPEC WAS: A41320A.04	03967	LA	DH				
04	12/89	DL	LM	REVISED DWG. TO CURRENT DESIGN WITH LESS MAT'L IN TRANSITION AREA			LM	DH			
03	8/89	JP	LM	STAMPING WAS .032 COPPER			LM	DH			
REV	DATE	BY	CHK	DESCRIPTION	ECN#	CUST	PM	DRAWN BY	CHK'D	SCALE	DRAWING NO.
								DAW	LM	NONE	A41320

PANDUIT CORP.

TINLEY PARK, ILLINOIS

NON-INSULATED MALE DISCONNECT
.250 X .032 (6.35 X 0.81)