

## Excellent Integrated System Limited

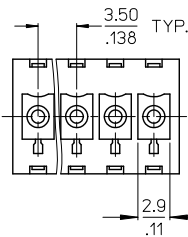
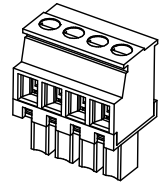
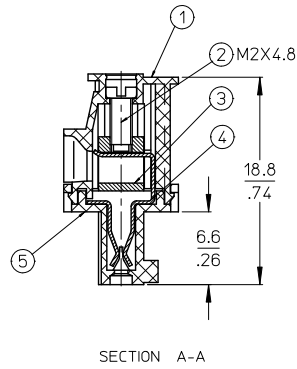
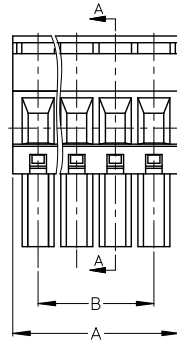
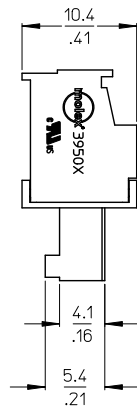
Stocking Distributor

Click to view price, real time Inventory, Delivery & Lifecycle Information:

[Molex Connector Corporation](#)  
[0395032020](#)

For any questions, you can email us directly:

[sales@integrated-circuit.com](mailto:sales@integrated-circuit.com)



**SPECIFICATIONS:**

1. MATERIAL:
  - (1). BODY: NYLON 66 (PA 66).
  - (2). SCREW: STEEL.
  - (3). CAGE (\*): BRASS
  - (4). TERMINAL: PHOSPHOR BRONZE (C)
  - (5). COVER: NYLON 66 (PA 66).
- (C) 2. PRODUCT SPECIFICATION: PS-39500-001.
3. WIRE RANGE: 30 - 16AWG.
4. TORQUE: 2 in-lbs.
5. WIRE STRIP LENGTH: 6.50/.256.
6. NUMBER OF CIRCUIT POSITIONS AVAILABLE = 2 THROUGH 20.
- (C) 7. ASSEMBLY IS ROHS COMPLIANT BY EXEMPTION. COMPONENTS MARKED WITH AN ASTERISK (\*) ARE ROHS COMPLIANT BY EXEMPTION, ALL OTHERS ARE ROHS COMPLIANT.

|  |                               |  |          |                 |            |  |   |                        |  |
|--|-------------------------------|--|----------|-----------------|------------|--|---|------------------------|--|
| FIX TYPO-TERM MATERIAL<br>EC NO: WNA2010-0708<br>DRAWN BY: C. YORK<br>CHKD BY: R. DEROSS<br>APPROVED BY: R. DEROSS | QUALITY SYMBOLS<br>▽=0<br>▽=0 | GENERAL TOLERANCES (UNLESS SPECIFIED)                |          | DIMENSION STYLE |            | SCALE  | DESIGN UNITS  | THIRD ANGLE PROJECTION |  |
|  |                               |  |          | MM/IN           |            | 3:1  | INCH  |                        |  |
|  |                               | 4 PLACES   | ± .005   | ± .005          | DRAWN BY   | DATE   | TITLE<br>3.50MM, EURO PLUG, VERTICAL, REAR WIRE ENTRY |                        |  |
|  |                               | 3 PLACES   | ± .013   | ± .013          | C. YORK    | 2006/03/17   |   |                        |  |
| 2 PLACES   | ± 0.13                        | ± .01  | 2 PLACES | ± .01           | 2006/03/17 | MOLEX INCORPORATED<br>MATERIAL NO. SEE SHT. 2<br>DOCUMENT NO. SD-39503-002<br>SHEET NO. 1 OF 2 |   |                        |  |
| 1 PLACE  | ± 0.3                         | ± .01  | 1 PLACE  | ± .01           | 2006/03/17 |  |   |                        |  |
|  |                               | ANGULAR ± 2°   |          | APPROVED BY     |            |  |   |                        |  |
|  |                               | DRAFT WHERE APPLICABLE MUST REMAIN WITHIN DIMENSIONS |          | R. DEROSS       |            |  |   |                        |  |

10 9 8 7 6 5 4 3 2 39503

| Circuit size | Material Numbers |           |           |                  |           |           |                  |           |           |                  |           |           | Dimensional Information |      |        |      |
|--------------|------------------|-----------|-----------|------------------|-----------|-----------|------------------|-----------|-----------|------------------|-----------|-----------|-------------------------|------|--------|------|
|              | Black            |           |           |                  |           |           | Green            |           |           |                  |           |           |                         |      |        |      |
|              | 100% Tin         |           |           | 30 u" Gold       |           |           | 100% Tin         |           |           | 30 u" Gold       |           |           | Dim. A                  |      | Dim. B |      |
|              | Printing Options |           | None      | Printing Options |           | None      | Printing Options |           | None      | Printing Options |           | None      | mm                      | inch | mm     | inch |
| 2            | 395032002        | 395032302 | 395032402 | 395032502        | 395032802 | 395032902 | 395037002        | 395037302 | 395037402 | 395037502        | 395037802 | 395037902 | 8.1                     | 0.32 | 3.5    | 0.14 |
| 3            | 395032003        | 395032303 | 395032403 | 395032503        | 395032803 | 395032903 | 395037003        | 395037303 | 395037403 | 395037503        | 395037803 | 395037903 | 11.6                    | 0.46 | 7.0    | 0.28 |
| 4            | 395032004        | 395032304 | 395032404 | 395032504        | 395032804 | 395032904 | 395037004        | 395037304 | 395037404 | 395037504        | 395037804 | 395037904 | 15.1                    | 0.59 | 10.5   | 0.41 |
| 5            | 395032005        | 395032305 | 395032405 | 395032505        | 395032805 | 395032905 | 395037005        | 395037305 | 395037405 | 395037505        | 395037805 | 395037905 | 18.6                    | 0.73 | 14.0   | 0.55 |
| 6            | 395032006        | 395032306 | 395032406 | 395032506        | 395032806 | 395032906 | 395037006        | 395037306 | 395037406 | 395037506        | 395037806 | 395037906 | 22.1                    | 0.87 | 17.5   | 0.69 |
| 7            | 395032007        | 395032307 | 395032407 | 395032507        | 395032807 | 395032907 | 395037007        | 395037307 | 395037407 | 395037507        | 395037807 | 395037907 | 25.6                    | 1.01 | 21.0   | 0.83 |
| 8            | 395032008        | 395032308 | 395032408 | 395032508        | 395032808 | 395032908 | 395037008        | 395037308 | 395037408 | 395037508        | 395037808 | 395037908 | 29.1                    | 1.15 | 24.5   | 0.97 |
| 9            | 395032009        | 395032309 | 395032409 | 395032509        | 395032809 | 395032909 | 395037009        | 395037309 | 395037409 | 395037509        | 395037809 | 395037909 | 32.6                    | 1.28 | 28.0   | 1.10 |
| 10           | 395032010        | 395032310 | 395032410 | 395032510        | 395032810 | 395032910 | 395037010        | 395037310 | 395037410 | 395037510        | 395037810 | 395037910 | 36.1                    | 1.42 | 31.5   | 1.24 |
| 11           | 395032011        | 395032311 | 395032411 | 395032511        | 395032811 | 395032911 | 395037011        | 395037311 | 395037411 | 395037511        | 395037811 | 395037911 | 39.6                    | 1.56 | 35.0   | 1.38 |
| 12           | 395032012        | 395032312 | 395032412 | 395032512        | 395032812 | 395032912 | 395037012        | 395037312 | 395037412 | 395037512        | 395037812 | 395037912 | 43.1                    | 1.70 | 38.5   | 1.52 |
| 13           | 395032013        | 395032313 | 395032413 | 395032513        | 395032813 | 395032913 | 395037013        | 395037313 | 395037413 | 395037513        | 395037813 | 395037913 | 46.6                    | 1.84 | 42.0   | 1.65 |
| 14           | 395032014        | 395032314 | 395032414 | 395032514        | 395032814 | 395032914 | 395037014        | 395037314 | 395037414 | 395037514        | 395037814 | 395037914 | 50.1                    | 1.97 | 45.5   | 1.79 |
| 15           | 395032015        | 395032315 | 395032415 | 395032515        | 395032815 | 395032915 | 395037015        | 395037315 | 395037415 | 395037515        | 395037815 | 395037915 | 53.6                    | 2.11 | 49.0   | 1.93 |
| 16           | 395032016        | 395032316 | 395032416 | 395032516        | 395032816 | 395032916 | 395037016        | 395037316 | 395037416 | 395037516        | 395037816 | 395037916 | 57.1                    | 2.25 | 52.5   | 2.07 |
| 17           | 395032017        | 395032317 | 395032417 | 395032517        | 395032817 | 395032917 | 395037017        | 395037317 | 395037417 | 395037517        | 395037817 | 395037917 | 60.6                    | 2.39 | 56.0   | 2.21 |
| 18           | 395032018        | 395032318 | 395032418 | 395032518        | 395032818 | 395032918 | 395037018        | 395037318 | 395037418 | 395037518        | 395037818 | 395037918 | 64.1                    | 2.52 | 59.5   | 2.34 |
| 19           | 395032019        | 395032319 | 395032419 | 395032519        | 395032819 | 395032919 | 395037019        | 395037319 | 395037419 | 395037519        | 395037819 | 395037919 | 67.6                    | 2.66 | 63.0   | 2.48 |
| 20           | 395032020        | 395032320 | 395032420 | 395032520        | 395032820 | 395032920 | 395037020        | 395037320 | 395037420 | 395037520        | 395037820 | 395037920 | 71.1                    | 2.80 | 66.5   | 2.62 |

|   |                               |   |  |                      |  |  |              |                        |  |
|---|-------------------------------|---|--|----------------------|--|--|--------------|------------------------|--|
| SEE SHEET 1<br>EC NO: WNA2010-0708<br>2010/06/28<br>CHRYNCLYORK<br>2006/03/17<br>CHYKDDITUS<br>2010/07/09<br>APPRETTIUS | QUALITY SYMBOLS<br>▽=0<br>▽=0 | GENERAL TOLERANCES (UNLESS SPECIFIED)   |  | DIMENSION STYLE      |  | SCALE  | DESIGN UNITS | THIRD ANGLE PROJECTION |  |
|   |                               |   |  | MM/IN                |  | 3:1  | INCH         |                        |  |
|   |                               |   |  | DRAWN BY DATE        |  | TITLE  |              |                        |  |
|   |                               |   |  | C. YORK 2006/03/17   |  | 3.50MM, EURO PLUG, VERTICAL, REAR WIRE ENTRY |              |                        |  |
|   |                               | CHECKED BY DATE   |  | APPROVED BY DATE     |  | MOLEX INCORPORATED                           |              |                        |  |
|   |                               | R. DEROSS 2006/03/17  |  | R. DEROSS 2006/03/17 |  | DOCUMENT NO. SD-39503-002                    |              |                        |  |
|   |                               | MATERIAL NO.  |  | SEE CHART            |  | SHEET NO. 2 OF 2                             |              |                        |  |
|   |                               | DRAFT WHERE APPLICABLE MUST REMAIN WITHIN DIMENSIONS  |  |                      |  |  |              |                        |  |
|   |                               | THIS DRAWING CONTAINS INFORMATION THAT IS PROPRIETARY TO MOLEX INCORPORATED AND SHOULD NOT BE USED WITHOUT WRITTEN PERMISSION |  |                      |  |  |              |                        |  |

9 8 7 6 5 4 3 2 1