

Excellent Integrated System Limited

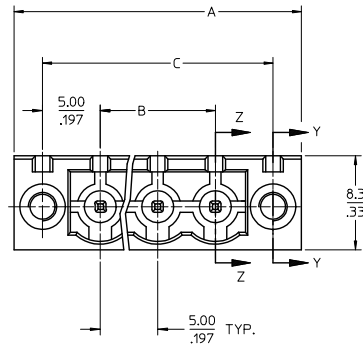
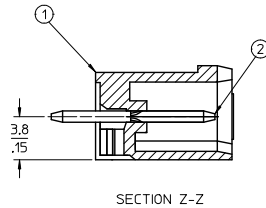
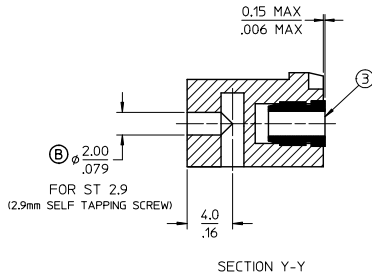
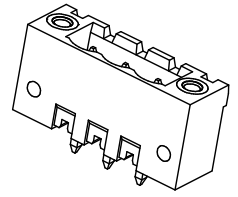
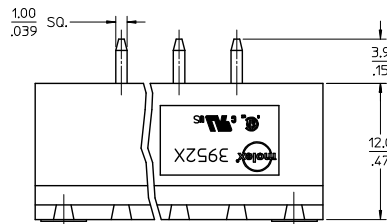
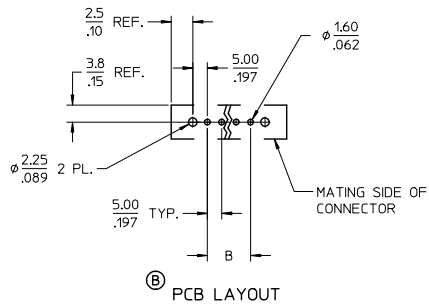
Stocking Distributor

Click to view price, real time Inventory, Delivery & Lifecycle Information:

[Molex Connector Corporation](#)
[0395255009](#)

For any questions, you can email us directly:

sales@integrated-circuit.com



SPECIFICATIONS:

1. Material:
 - (1). Body: PA66
 - (2). Pin: Brass
 - (3). Threaded insert: Brass
2. Wire range: N/A
3. Electrical rating: 300V, 15A
4. Wire strip length: N/A
5. Operating temperature: -40C to +105C
6. Max torque: N/A
7. Insulation resistance: DC 500V, 500M
8. Dielectric withstand: AC 2500V for 1 minute
9. Breakdown voltage: 4000V.
10. $A = (B + 15,0mm)$
11. $B = (N - 1) \times P$
12. $C = (B + 10mm)$
12. P (Pitch) = 5.0mm (.197")
13. N = Number of positions available 2 through 24
14. Dims shown are for reference only

| | | | | | | |
|---|-------------------------------|---|--|--|----------------------|---------------------------|
| ADD DIMS & PCB LYT EC NO: IPG206-1279 DRAWN/STAMPED 2016/03/12 CHK'D BY ZIEI LNSK 2016/03/28 APPR'D BY ZIEI 2016/03/25 | QUALITY SYMBOLS ▼=0 ▽=0 | GENERAL TOLERANCES (UNLESS SPECIFIED) | DIMENSION STYLE MM/IN | SCALE 4:1 | DESIGN UNITS INCH | THIRD ANGLE PROJECTION |
| | | 4 PLACES ± --- ± INCH 3 PLACES ± 0.038 ± 0.005 2 PLACES ± 0.13 ± 0.01 1 PLACE ± 0.3 ± --- 0 PLACE ± ± | DRAWN BY DATE LROTHAUS 12/6/05 CHECKED BY DATE C. YORK 01/06/06 APPROVED BY DATE | TITLE 5.0MM, EURO HEADER, VERTICAL, MOUNTING | | |
| | | ANGULAR ± 2° | MATERIAL NO. | DOCUMENT NO. | | |
| | | DRAFT WHERE APPLICABLE MUST REMAIN WITHIN DIMENSIONS | SEE SHEET 2 | SD-39525-002 | | |
| | | | SIZE | THIS DRAWING CONTAINS INFORMATION THAT IS PROPRIETARY TO MOLEX INCORPORATED AND SHOULD NOT BE USED WITHOUT WRITTEN PERMISSION | | |
| REV | | | | | | SHEET NO. 1 OF 2 |

10 9 8 7 6 5 4 3 2 39525

| Description | Circuit (N/A) | Material Numbers | | | | | | | | | | | | Dimensional Information | | | | | |
|--|------------------|------------------|-----------|-----------|-----------------|-----------|-----------|-----------------|-----------|-----------|-----------------|-----------|-----------|-------------------------|--------|--------|-------|--------|-------|
| | | Black | | | | | | Green | | | | | | | | | | | |
| | | 101% Fin | | | 30 u" Gold | | | 101% Fin | | | 30 u" Gold | | | | | | | | |
| | | Plating Options | | | Plating Options | | | Plating Options | | | Plating Options | | | | | | | | |
| | | None | 10uV | 11uV | None | 10uV | 11uV | None | 10uV | 11uV | None | 10uV | 11uV | Dim. A | Dim. B | Dim. C | | | |
| 5.0mm Euro Header, Vertical, Mounting Ends | 2 | 395250002 | 395250002 | 395250002 | 395250002 | 395250002 | 395250002 | 395250002 | 395250002 | 395250002 | 395250002 | 395250002 | 395250002 | 20.00 | 0.787 | 5.00 | 0.197 | 15.00 | 0.591 |
| 5.0mm Euro Header, Vertical, Mounting Ends | 3 | 395250003 | 395250003 | 395250003 | 395250003 | 395250003 | 395250003 | 395250003 | 395250003 | 395250003 | 395250003 | 395250003 | 395250003 | 25.00 | 0.984 | 10.00 | 0.394 | 20.00 | 0.787 |
| 5.0mm Euro Header, Vertical, Mounting Ends | 4 | 395250004 | 395250004 | 395250004 | 395250004 | 395250004 | 395250004 | 395250004 | 395250004 | 395250004 | 395250004 | 395250004 | 395250004 | 30.00 | 1.181 | 15.00 | 0.591 | 25.00 | 0.984 |
| 5.0mm Euro Header, Vertical, Mounting Ends | 5 | 395250005 | 395250005 | 395250005 | 395250005 | 395250005 | 395250005 | 395250005 | 395250005 | 395250005 | 395250005 | 395250005 | 395250005 | 35.00 | 1.379 | 20.00 | 0.787 | 30.00 | 1.181 |
| 5.0mm Euro Header, Vertical, Mounting Ends | 6 | 395250006 | 395250006 | 395250006 | 395250006 | 395250006 | 395250006 | 395250006 | 395250006 | 395250006 | 395250006 | 395250006 | 395250006 | 40.00 | 1.575 | 25.00 | 0.984 | 35.00 | 1.379 |
| 5.0mm Euro Header, Vertical, Mounting Ends | 7 | 395250007 | 395250007 | 395250007 | 395250007 | 395250007 | 395250007 | 395250007 | 395250007 | 395250007 | 395250007 | 395250007 | 395250007 | 45.00 | 1.772 | 30.00 | 1.181 | 40.00 | 1.575 |
| 5.0mm Euro Header, Vertical, Mounting Ends | 8 | 395250008 | 395250008 | 395250008 | 395250008 | 395250008 | 395250008 | 395250008 | 395250008 | 395250008 | 395250008 | 395250008 | 395250008 | 50.00 | 1.969 | 35.00 | 1.379 | 45.00 | 1.772 |
| 5.0mm Euro Header, Vertical, Mounting Ends | 9 | 395250009 | 395250009 | 395250009 | 395250009 | 395250009 | 395250009 | 395250009 | 395250009 | 395250009 | 395250009 | 395250009 | 395250009 | 55.00 | 2.166 | 40.00 | 1.575 | 50.00 | 1.969 |
| 5.0mm Euro Header, Vertical, Mounting Ends | 10 | 395250010 | 395250010 | 395250010 | 395250010 | 395250010 | 395250010 | 395250010 | 395250010 | 395250010 | 395250010 | 395250010 | 395250010 | 60.00 | 2.362 | 45.00 | 1.772 | 55.00 | 2.166 |
| 5.0mm Euro Header, Vertical, Mounting Ends | 11 | 395250011 | 395250011 | 395250011 | 395250011 | 395250011 | 395250011 | 395250011 | 395250011 | 395250011 | 395250011 | 395250011 | 395250011 | 65.00 | 2.559 | 50.00 | 1.969 | 60.00 | 2.166 |
| 5.0mm Euro Header, Vertical, Mounting Ends | 12 | 395250012 | 395250012 | 395250012 | 395250012 | 395250012 | 395250012 | 395250012 | 395250012 | 395250012 | 395250012 | 395250012 | 395250012 | 70.00 | 2.756 | 55.00 | 2.166 | 65.00 | 2.166 |
| 5.0mm Euro Header, Vertical, Mounting Ends | 13 | 395250013 | 395250013 | 395250013 | 395250013 | 395250013 | 395250013 | 395250013 | 395250013 | 395250013 | 395250013 | 395250013 | 395250013 | 75.00 | 2.953 | 60.00 | 2.362 | 70.00 | 2.166 |
| 5.0mm Euro Header, Vertical, Mounting Ends | 14 | 395250014 | 395250014 | 395250014 | 395250014 | 395250014 | 395250014 | 395250014 | 395250014 | 395250014 | 395250014 | 395250014 | 395250014 | 80.00 | 3.150 | 65.00 | 2.559 | 75.00 | 2.166 |
| 5.0mm Euro Header, Vertical, Mounting Ends | 15 | 395250015 | 395250015 | 395250015 | 395250015 | 395250015 | 395250015 | 395250015 | 395250015 | 395250015 | 395250015 | 395250015 | 395250015 | 85.00 | 3.347 | 70.00 | 2.756 | 80.00 | 2.362 |
| 5.0mm Euro Header, Vertical, Mounting Ends | 16 | 395250016 | 395250016 | 395250016 | 395250016 | 395250016 | 395250016 | 395250016 | 395250016 | 395250016 | 395250016 | 395250016 | 395250016 | 90.00 | 3.543 | 75.00 | 2.953 | 85.00 | 2.362 |
| 5.0mm Euro Header, Vertical, Mounting Ends | 17 | 395250017 | 395250017 | 395250017 | 395250017 | 395250017 | 395250017 | 395250017 | 395250017 | 395250017 | 395250017 | 395250017 | 395250017 | 95.00 | 3.740 | 80.00 | 3.150 | 90.00 | 2.362 |
| 5.0mm Euro Header, Vertical, Mounting Ends | 18 | 395250018 | 395250018 | 395250018 | 395250018 | 395250018 | 395250018 | 395250018 | 395250018 | 395250018 | 395250018 | 395250018 | 395250018 | 100.00 | 3.937 | 85.00 | 3.347 | 95.00 | 2.362 |
| 5.0mm Euro Header, Vertical, Mounting Ends | 19 | 395250019 | 395250019 | 395250019 | 395250019 | 395250019 | 395250019 | 395250019 | 395250019 | 395250019 | 395250019 | 395250019 | 395250019 | 105.00 | 4.134 | 90.00 | 3.543 | 100.00 | 2.362 |
| 5.0mm Euro Header, Vertical, Mounting Ends | 20 | 395250020 | 395250020 | 395250020 | 395250020 | 395250020 | 395250020 | 395250020 | 395250020 | 395250020 | 395250020 | 395250020 | 395250020 | 110.00 | 4.331 | 95.00 | 3.740 | 105.00 | 2.362 |
| 5.0mm Euro Header, Vertical, Mounting Ends | 21 | 395250021 | 395250021 | 395250021 | 395250021 | 395250021 | 395250021 | 395250021 | 395250021 | 395250021 | 395250021 | 395250021 | 395250021 | 115.00 | 4.528 | 100.00 | 3.937 | 110.00 | 2.362 |
| 5.0mm Euro Header, Vertical, Mounting Ends | 22 | 395250022 | 395250022 | 395250022 | 395250022 | 395250022 | 395250022 | 395250022 | 395250022 | 395250022 | 395250022 | 395250022 | 395250022 | 120.00 | 4.724 | 105.00 | 4.134 | 115.00 | 2.362 |
| 5.0mm Euro Header, Vertical, Mounting Ends | 23 | 395250023 | 395250023 | 395250023 | 395250023 | 395250023 | 395250023 | 395250023 | 395250023 | 395250023 | 395250023 | 395250023 | 395250023 | 125.00 | 4.921 | 110.00 | 4.331 | 120.00 | 2.362 |
| 5.0mm Euro Header, Vertical, Mounting Ends | 24 | 395250024 | 395250024 | 395250024 | 395250024 | 395250024 | 395250024 | 395250024 | 395250024 | 395250024 | 395250024 | 395250024 | 395250024 | 130.00 | 5.118 | 115.00 | 4.528 | 125.00 | 2.362 |

| | | | | | | | | |
|---|-------------------------------|---------------------------------------|------|------------------------|--|---|--------------|----------------------------|
| SHT-2 WAS ME10 DOC EC NO: PG2016-1279 DRAFTER: DR. J. K. SINGH CHECKED: Z. J. L. SINGH APPROVED: P. J. SINGH REV: 2016/03/25 | QUALITY SYMBOLS ▽=0 ▽=0 | GENERAL TOLERANCES (UNLESS SPECIFIED) | | DIMENSION STYLE | | SCALE | DESIGN UNITS | THIRD ANGLE PROJECTION |
| | | mm | INCH | MM/IN | | 1:1 | INCH | |
| | | DRAWN BY: L. THAUS | | DATE: 12/6/05 | | TITLE: 5.0MM, EURO HEADER, VERTICAL, MOUNTING | | |
| | | CHECKED BY: C. YORK | | DATE: 01/06/06 | | molex | | |
| APPROVED BY: _____ | | DATE: _____ | | MATERIAL NO. SEE CHART | | DOCUMENT NO. SD-39525-002 | | SHEET NO. 2 OF 2 |
| DRAFT WHERE APPLICABLE MUST REMAIN WITHIN DIMENSIONS THIS DRAWING CONTAINS INFORMATION THAT IS PROPRIETARY TO MOLEX INCORPORATED AND SHOULD NOT BE USED WITHOUT WRITTEN PERMISSION | | | | | | | | |

9 8 7 6 5 4 3 2 1

| Description | Circuit size | Material Numbers | | | | | | | | | | | | Dimensional Information | | | | | |
|---|--------------|------------------|-----------|-----------|------------------|-----------|-----------|------------------|-----------|-----------|------------------|-----------|--------|-------------------------|--------|-------|--------|-------|------|
| | | Black | | | | | | Green | | | | | | | | | | | |
| | | 100% Tin | | | 30 u" Gold | | | 100% Tin | | | 30 u" Gold | | | mm | inch | mm | inch | mm | inch |
| | | Printing Options | | | Printing Options | | | Printing Options | | | Printing Options | | | | | | | | |
| | | None | 10AV | 11AV | None | 10AV | 11AV | None | 10AV | 11AV | None | 10AV | 11AV | | | | | | |
| 5.0mm, Euro Header, Vertical, Mounting Ends | 2 | 395250002 | 395250002 | 395250402 | 395250002 | 395250002 | 395250002 | 395250002 | 395250002 | 395250002 | 395250002 | 395250002 | 20.00 | 0.787 | 5.00 | 0.197 | 15.00 | 0.591 | |
| 5.0mm, Euro Header, Vertical, Mounting Ends | 3 | 395250003 | 395250003 | 395250403 | 395250003 | 395250003 | 395250003 | 395250003 | 395250003 | 395250003 | 395250003 | 395250003 | 25.00 | 0.984 | 10.00 | 0.394 | 20.00 | 0.787 | |
| 5.0mm, Euro Header, Vertical, Mounting Ends | 4 | 395250004 | 395250004 | 395250404 | 395250004 | 395250004 | 395250004 | 395250004 | 395250004 | 395250004 | 395250004 | 395250004 | 30.00 | 1.181 | 15.00 | 0.591 | 25.00 | 0.984 | |
| 5.0mm, Euro Header, Vertical, Mounting Ends | 5 | 395250005 | 395250005 | 395250405 | 395250005 | 395250005 | 395250005 | 395250005 | 395250005 | 395250005 | 395250005 | 395250005 | 35.00 | 1.378 | 20.00 | 0.787 | 30.00 | 1.181 | |
| 5.0mm, Euro Header, Vertical, Mounting Ends | 6 | 395250006 | 395250006 | 395250406 | 395250006 | 395250006 | 395250006 | 395250006 | 395250006 | 395250006 | 395250006 | 395250006 | 40.00 | 1.575 | 25.00 | 0.984 | 35.00 | 1.378 | |
| 5.0mm, Euro Header, Vertical, Mounting Ends | 7 | 395250007 | 395250007 | 395250407 | 395250007 | 395250007 | 395250007 | 395250007 | 395250007 | 395250007 | 395250007 | 395250007 | 45.00 | 1.772 | 30.00 | 1.181 | 40.00 | 1.575 | |
| 5.0mm, Euro Header, Vertical, Mounting Ends | 8 | 395250008 | 395250008 | 395250408 | 395250008 | 395250008 | 395250008 | 395250008 | 395250008 | 395250008 | 395250008 | 395250008 | 50.00 | 1.969 | 35.00 | 1.378 | 45.00 | 1.772 | |
| 5.0mm, Euro Header, Vertical, Mounting Ends | 9 | 395250009 | 395250009 | 395250409 | 395250009 | 395250009 | 395250009 | 395250009 | 395250009 | 395250009 | 395250009 | 395250009 | 55.00 | 2.165 | 40.00 | 1.575 | 50.00 | 1.969 | |
| 5.0mm, Euro Header, Vertical, Mounting Ends | 10 | 395250010 | 395250010 | 395250410 | 395250010 | 395250010 | 395250010 | 395250010 | 395250010 | 395250010 | 395250010 | 395250010 | 60.00 | 2.362 | 45.00 | 1.772 | 55.00 | 2.165 | |
| 5.0mm, Euro Header, Vertical, Mounting Ends | 11 | 395250011 | 395250011 | 395250411 | 395250011 | 395250011 | 395250011 | 395250011 | 395250011 | 395250011 | 395250011 | 395250011 | 65.00 | 2.559 | 50.00 | 1.969 | 60.00 | 2.362 | |
| 5.0mm, Euro Header, Vertical, Mounting Ends | 12 | 395250012 | 395250012 | 395250412 | 395250012 | 395250012 | 395250012 | 395250012 | 395250012 | 395250012 | 395250012 | 395250012 | 70.00 | 2.756 | 55.00 | 2.165 | 65.00 | 2.559 | |
| 5.0mm, Euro Header, Vertical, Mounting Ends | 13 | 395250013 | 395250013 | 395250413 | 395250013 | 395250013 | 395250013 | 395250013 | 395250013 | 395250013 | 395250013 | 395250013 | 75.00 | 2.953 | 60.00 | 2.362 | 70.00 | 2.756 | |
| 5.0mm, Euro Header, Vertical, Mounting Ends | 14 | 395250014 | 395250014 | 395250414 | 395250014 | 395250014 | 395250014 | 395250014 | 395250014 | 395250014 | 395250014 | 395250014 | 80.00 | 3.150 | 65.00 | 2.559 | 75.00 | 2.953 | |
| 5.0mm, Euro Header, Vertical, Mounting Ends | 15 | 395250015 | 395250015 | 395250415 | 395250015 | 395250015 | 395250015 | 395250015 | 395250015 | 395250015 | 395250015 | 395250015 | 85.00 | 3.346 | 70.00 | 2.756 | 80.00 | 3.150 | |
| 5.0mm, Euro Header, Vertical, Mounting Ends | 16 | 395250016 | 395250016 | 395250416 | 395250016 | 395250016 | 395250016 | 395250016 | 395250016 | 395250016 | 395250016 | 395250016 | 90.00 | 3.543 | 75.00 | 2.953 | 85.00 | 3.346 | |
| 5.0mm, Euro Header, Vertical, Mounting Ends | 17 | 395250017 | 395250017 | 395250417 | 395250017 | 395250017 | 395250017 | 395250017 | 395250017 | 395250017 | 395250017 | 395250017 | 95.00 | 3.740 | 80.00 | 3.150 | 90.00 | 3.543 | |
| 5.0mm, Euro Header, Vertical, Mounting Ends | 18 | 395250018 | 395250018 | 395250418 | 395250018 | 395250018 | 395250018 | 395250018 | 395250018 | 395250018 | 395250018 | 395250018 | 100.00 | 3.937 | 85.00 | 3.346 | 95.00 | 3.740 | |
| 5.0mm, Euro Header, Vertical, Mounting Ends | 19 | 395250019 | 395250019 | 395250419 | 395250019 | 395250019 | 395250019 | 395250019 | 395250019 | 395250019 | 395250019 | 395250019 | 105.00 | 4.134 | 90.00 | 3.543 | 100.00 | 3.937 | |
| 5.0mm, Euro Header, Vertical, Mounting Ends | 20 | 395250020 | 395250020 | 395250420 | 395250020 | 395250020 | 395250020 | 395250020 | 395250020 | 395250020 | 395250020 | 395250020 | 110.00 | 4.331 | 95.00 | 3.740 | 105.00 | 4.134 | |
| 5.0mm, Euro Header, Vertical, Mounting Ends | 21 | 395250021 | 395250021 | 395250421 | 395250021 | 395250021 | 395250021 | 395250021 | 395250021 | 395250021 | 395250021 | 395250021 | 115.00 | 4.528 | 100.00 | 3.937 | 110.00 | 4.531 | |
| 5.0mm, Euro Header, Vertical, Mounting Ends | 22 | 395250022 | 395250022 | 395250422 | 395250022 | 395250022 | 395250022 | 395250022 | 395250022 | 395250022 | 395250022 | 395250022 | 120.00 | 4.724 | 105.00 | 4.134 | 115.00 | 4.531 | |
| 5.0mm, Euro Header, Vertical, Mounting Ends | 23 | 395250023 | 395250023 | 395250423 | 395250023 | 395250023 | 395250023 | 395250023 | 395250023 | 395250023 | 395250023 | 395250023 | 125.00 | 4.921 | 110.00 | 4.331 | 120.00 | 4.724 | |
| 5.0mm, Euro Header, Vertical, Mounting Ends | 24 | 395250024 | 395250024 | 395250424 | 395250024 | 395250024 | 395250024 | 395250024 | 395250024 | 395250024 | 395250024 | 395250024 | 130.00 | 5.118 | 115.00 | 4.528 | 125.00 | 4.921 | |

| | | | | | | | | |
|--|-------------------------------|---------------------------------------|--------|--------------------------|------------------|---|----------------------|----------------------------|
| SEE SHEET 1 IEC NO: NEO2006-0310 DRAWN BY: LROTHAUS CHKD BY: C. YORK APPR: JPAWL DATE: 2006/01/09 DATE: 2006/01/10 | QUALITY SYMBOLS ▽=0 ▽=0 | GENERAL TOLERANCES (UNLESS SPECIFIED) | | DIMENSION STYLE MM/IN | | SCALE 4:1 | DESIGN UNITS INCH | THIRD ANGLE PROJECTION |
| | | mm | INCH | DRAWN BY LROTHAUS | DATE 12/6/05 | TITLE 5.0MM, EURO HEADER, VERTICAL, MOUNTING | | |
| | | 4 PLACES ± --- | ±.0015 | CHECKED BY C. YORK | DATE 01/04/06 | | | |
| | | 3 PLACES ± 0.038 | ±.005 | APPROVED BY | DATE | | | |
| | | ANGULAR ± 2° | | | | MOLEX INCORPORATED | | |
| DRAFT WHERE APPLICABLE MUST REMAIN WITHIN DIMENSIONS | | SEE CHART | | MATERIAL NO. | | DOCUMENT NO. SD-39525-002 | | SHEET NO. 2 OF 2 |
| THIS DRAWING CONTAINS INFORMATION THAT IS PROPRIETARY TO MOLEX INCORPORATED AND SHOULD NOT BE USED WITHOUT WRITTEN PERMISSION | | | | | | | | |