

## Excellent Integrated System Limited

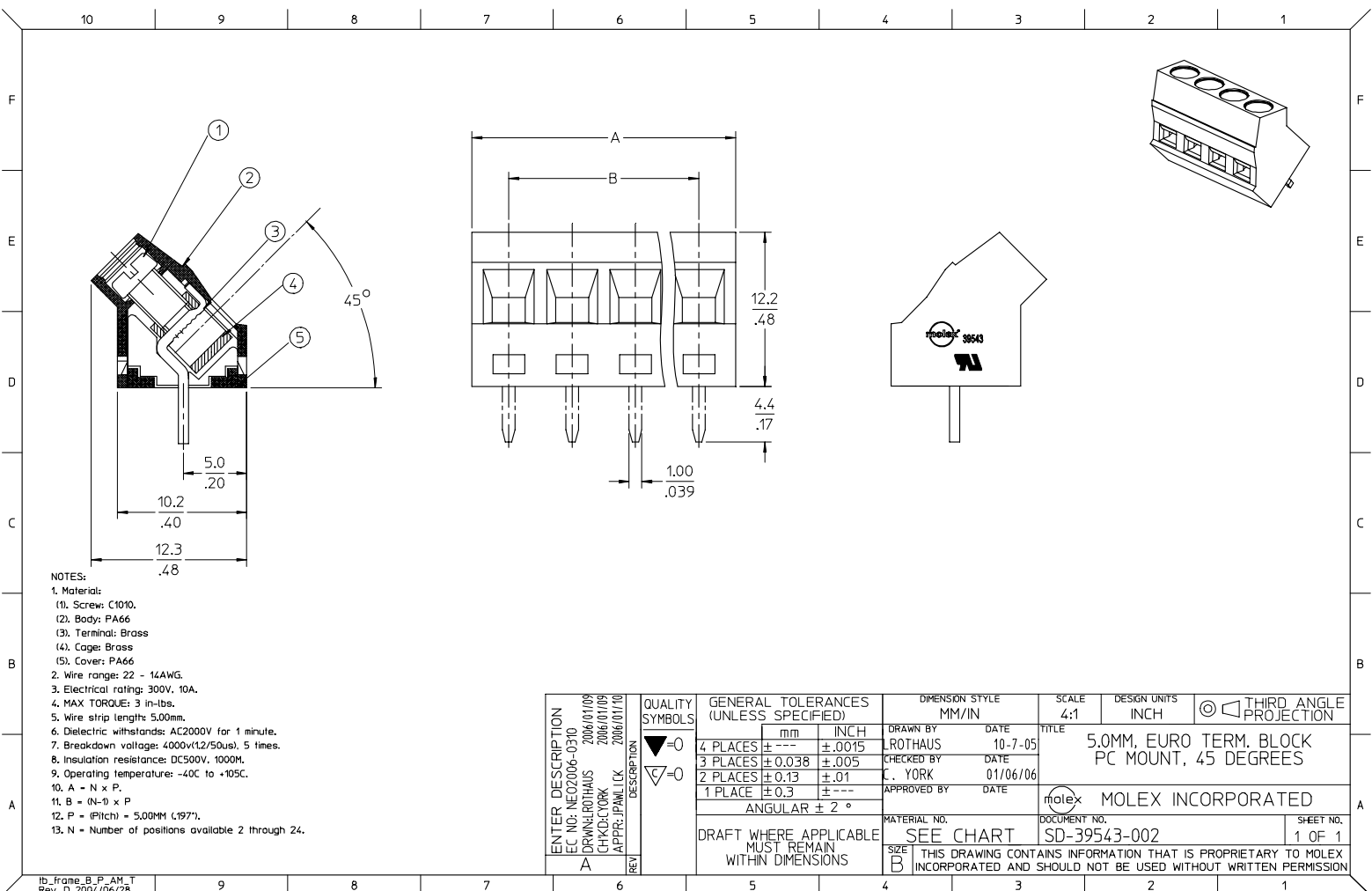
Stocking Distributor

Click to view price, real time Inventory, Delivery & Lifecycle Information:

[Molex Connector Corporation](#)  
[0395936306](#)

For any questions, you can email us directly:

[sales@integrated-circuit.com](mailto:sales@integrated-circuit.com)



- NOTES:
- Material:
  - (1), Screw: C1010.
  - (2), Body: PA66
  - (3), Terminal: Brass
  - (4), Cage: Brass
  - (5), Cover: PA66
  - Wire range: 22 - 14AWG.
  - Electrical rating: 300V, 10A.
  - MAX TORQUE: 3 in.-lbs.
  - Wire strip length: 5.0mm.
  - Dielectric withstands: AC2000V for 1 minute.
  - Breakdown voltage: 4000v\*(12/50us), 5 times.
  - Insulation resistance: DC500V, 1000M.
  - Operating temperature: -40C to +105C.
  - A = N x P.
  - B = (N-1) x P
  - P = (Pitch) = 5.00MM (.197").
  - N = Number of positions available 2 through 24.

|   |                               |   |                      |                              |   |                      |                        |
|---|-------------------------------|---|----------------------|------------------------------|---|----------------------|------------------------|
| ENTER DESCRIPTION<br>EC NO: NEO2006-0310<br>DRAWN: LROTHAUS 2006/01/08<br>CHECKED: YORK 2006/01/08<br>APPR: JPANLICK 2006/01/10 | QUALITY SYMBOLS<br>▽=0<br>▽=0 | GENERAL TOLERANCES (UNLESS SPECIFIED)   |                      | DIMENSION STYLE<br>MM/IN     | SCALE<br>4:1  | DESIGN UNITS<br>INCH | THIRD ANGLE PROJECTION |
|   |                               | 4 PLACES ± --- ± .0015<br>3 PLACES ± 0.038 ± .005<br>2 PLACES ± 0.13 ± .01<br>1 PLACE ± 0.3 ± --- | DRAWN BY<br>LROTHAUS | DATE<br>10-7-05              | TITLE<br>5.0MM, EURO TERM. BLOCK PC MOUNT, 45 DEGREES |                      |                        |
| A   | REV<br>DESCRIPTION            | DRAFT WHERE APPLICABLE MUST REMAIN WITHIN DIMENSIONS  |                      | CHECKED BY<br>C. YORK        | DATE<br>01/06/06                                      | MOLEX INCORPORATED   |                        |
|   |                               | MATERIAL NO.<br>SEE CHART   | APPROVED BY<br>DATE  | DOCUMENT NO.<br>SD-39543-002 | SHEET NO.<br>1 OF 1                                   |                      |                        |

10 9 8 7 6 5 4 3 2 1

| Description                       | Circuit size | Material Numbers |           |           |                  |           |           | Dimensional Information |       |        |       |
|-----------------------------------|--------------|------------------|-----------|-----------|------------------|-----------|-----------|-------------------------|-------|--------|-------|
|                                   |              | Black            |           |           | Green            |           |           | Dim. A mm inch mm inch  |       |        |       |
|                                   |              | 100% Tin         |           |           | 100% Tin         |           |           |                         |       |        |       |
|                                   |              | Printing Options |           |           | Printing Options |           |           |                         |       |        |       |
| None                              | 10A          | 11A              | None      | 10A       | 11A              |           |           |                         |       |        |       |
| 5.0mm Euro Block PC Mount, 45 Deg | 2            | 395434302        | 395436302 | 395438302 | 395934302        | 395936302 | 395938302 | 10.80                   | 0.425 | 5.00   | 0.197 |
| 5.0mm Euro Block PC Mount, 45 Deg | 3            | 395434303        | 395436303 | 395438303 | 395934303        | 395936303 | 395938303 | 15.80                   | 0.622 | 10.00  | 0.394 |
| 5.0mm Euro Block PC Mount, 45 Deg | 4            | 395434304        | 395436304 | 395438304 | 395934304        | 395936304 | 395938304 | 20.80                   | 0.819 | 15.00  | 0.591 |
| 5.0mm Euro Block PC Mount, 45 Deg | 5            | 395434305        | 395436305 | 395438305 | 395934305        | 395936305 | 395938305 | 25.80                   | 1.016 | 20.00  | 0.787 |
| 5.0mm Euro Block PC Mount, 45 Deg | 6            | 395434306        | 395436306 | 395438306 | 395934306        | 395936306 | 395938306 | 30.80                   | 1.213 | 25.00  | 0.984 |
| 5.0mm Euro Block PC Mount, 45 Deg | 7            | 395434307        | 395436307 | 395438307 | 395934307        | 395936307 | 395938307 | 35.80                   | 1.409 | 30.00  | 1.181 |
| 5.0mm Euro Block PC Mount, 45 Deg | 8            | 395434308        | 395436308 | 395438308 | 395934308        | 395936308 | 395938308 | 40.80                   | 1.606 | 35.00  | 1.378 |
| 5.0mm Euro Block PC Mount, 45 Deg | 9            | 395434309        | 395436309 | 395438309 | 395934309        | 395936309 | 395938309 | 45.80                   | 1.803 | 40.00  | 1.575 |
| 5.0mm Euro Block PC Mount, 45 Deg | 10           | 395434310        | 395436310 | 395438310 | 395934310        | 395936310 | 395938310 | 50.80                   | 2.000 | 45.00  | 1.772 |
| 5.0mm Euro Block PC Mount, 45 Deg | 11           | 395434311        | 395436311 | 395438311 | 395934311        | 395936311 | 395938311 | 55.80                   | 2.197 | 50.00  | 1.969 |
| 5.0mm Euro Block PC Mount, 45 Deg | 12           | 395434312        | 395436312 | 395438312 | 395934312        | 395936312 | 395938312 | 60.80                   | 2.394 | 55.00  | 2.166 |
| 5.0mm Euro Block PC Mount, 45 Deg | 13           | 395434313        | 395436313 | 395438313 | 395934313        | 395936313 | 395938313 | 65.80                   | 2.591 | 60.00  | 2.362 |
| 5.0mm Euro Block PC Mount, 45 Deg | 14           | 395434314        | 395436314 | 395438314 | 395934314        | 395936314 | 395938314 | 70.80                   | 2.787 | 65.00  | 2.559 |
| 5.0mm Euro Block PC Mount, 45 Deg | 15           | 395434315        | 395436315 | 395438315 | 395934315        | 395936315 | 395938315 | 75.80                   | 2.984 | 70.00  | 2.756 |
| 5.0mm Euro Block PC Mount, 45 Deg | 16           | 395434316        | 395436316 | 395438316 | 395934316        | 395936316 | 395938316 | 80.80                   | 3.181 | 75.00  | 2.953 |
| 5.0mm Euro Block PC Mount, 45 Deg | 17           | 395434317        | 395436317 | 395438317 | 395934317        | 395936317 | 395938317 | 85.80                   | 3.378 | 80.00  | 3.150 |
| 5.0mm Euro Block PC Mount, 45 Deg | 18           | 395434318        | 395436318 | 395438318 | 395934318        | 395936318 | 395938318 | 90.80                   | 3.575 | 85.00  | 3.346 |
| 5.0mm Euro Block PC Mount, 45 Deg | 19           | 395434319        | 395436319 | 395438319 | 395934319        | 395936319 | 395938319 | 95.80                   | 3.772 | 90.00  | 3.543 |
| 5.0mm Euro Block PC Mount, 45 Deg | 20           | 395434320        | 395436320 | 395438320 | 395934320        | 395936320 | 395938320 | 100.80                  | 3.969 | 95.00  | 3.740 |
| 5.0mm Euro Block PC Mount, 45 Deg | 21           | 395434321        | 395436321 | 395438321 | 395934321        | 395936321 | 395938321 | 105.80                  | 4.166 | 100.00 | 3.937 |
| 5.0mm Euro Block PC Mount, 45 Deg | 22           | 395434322        | 395436322 | 395438322 | 395934322        | 395936322 | 395938322 | 110.80                  | 4.362 | 105.00 | 4.134 |
| 5.0mm Euro Block PC Mount, 45 Deg | 23           | 395434323        | 395436323 | 395438323 | 395934323        | 395936323 | 395938323 | 115.80                  | 4.559 | 110.00 | 4.331 |
| 5.0mm Euro Block PC Mount, 45 Deg | 24           | 395434324        | 395436324 | 395438324 | 395934324        | 395936324 | 395938324 | 120.80                  | 4.756 | 115.00 | 4.528 |

|   |                                      |   |  |   |  |  |
|---|--------------------------------------|---|--|---|--|--|
| SEE SHEET 1<br>IEC NO: NEO2006-0310<br>DRAWN BY: L.ROTHAUS<br>CHECKED BY: C. YORK<br>APPR: J.PAWLIK<br>2006/01/08<br>2006/01/08<br>2006/01/10 | QUALITY SYMBOLS<br>▽=0<br>▽=0<br>▽=0 | GENERAL TOLERANCES (UNLESS SPECIFIED)<br>mm INCH<br>4 PLACES ± 0.38 ± .015<br>3 PLACES ± 0.38 ± .005<br>2 PLACES ± 0.13 ± .01<br>1 PLACE ± 0.3 ± .005<br>ANGULAR ± 2° | DIMENSION STYLE<br>MM/IN<br>DRAWN BY: L.ROTHAUS<br>CHECKED BY: C. YORK<br>APPROVED BY: | DATE: 12/16/05<br>DATE: 01/05/06<br>DATE:       | SCALE: 4:1<br>DESIGN UNITS: INCH<br>THIRD ANGLE PROJECTION | TITLE: 5.0MM, EURO TERM. BLOCK PC MOUNT, 45 DEGREE |
|   |                                      | DRAFT WHERE APPLICABLE MUST REMAIN WITHIN DIMENSIONS  | MATERIAL NO.: SEE CHART<br>SIZE: B   | DOCUMENT NO.: SD-39543-002<br>SHEET NO.: 2 OF 2 |  |  |
|   |                                      | THIS DRAWING CONTAINS INFORMATION THAT IS PROPRIETARY TO MOLEX INCORPORATED AND SHOULD NOT BE USED WITHOUT WRITTEN PERMISSION   |  |   |  |  |
|   |                                      | MOLEX INCORPORATED  |  |   |  |  |

9 8 7 6 5 4 3 2 1