

Excellent Integrated System Limited

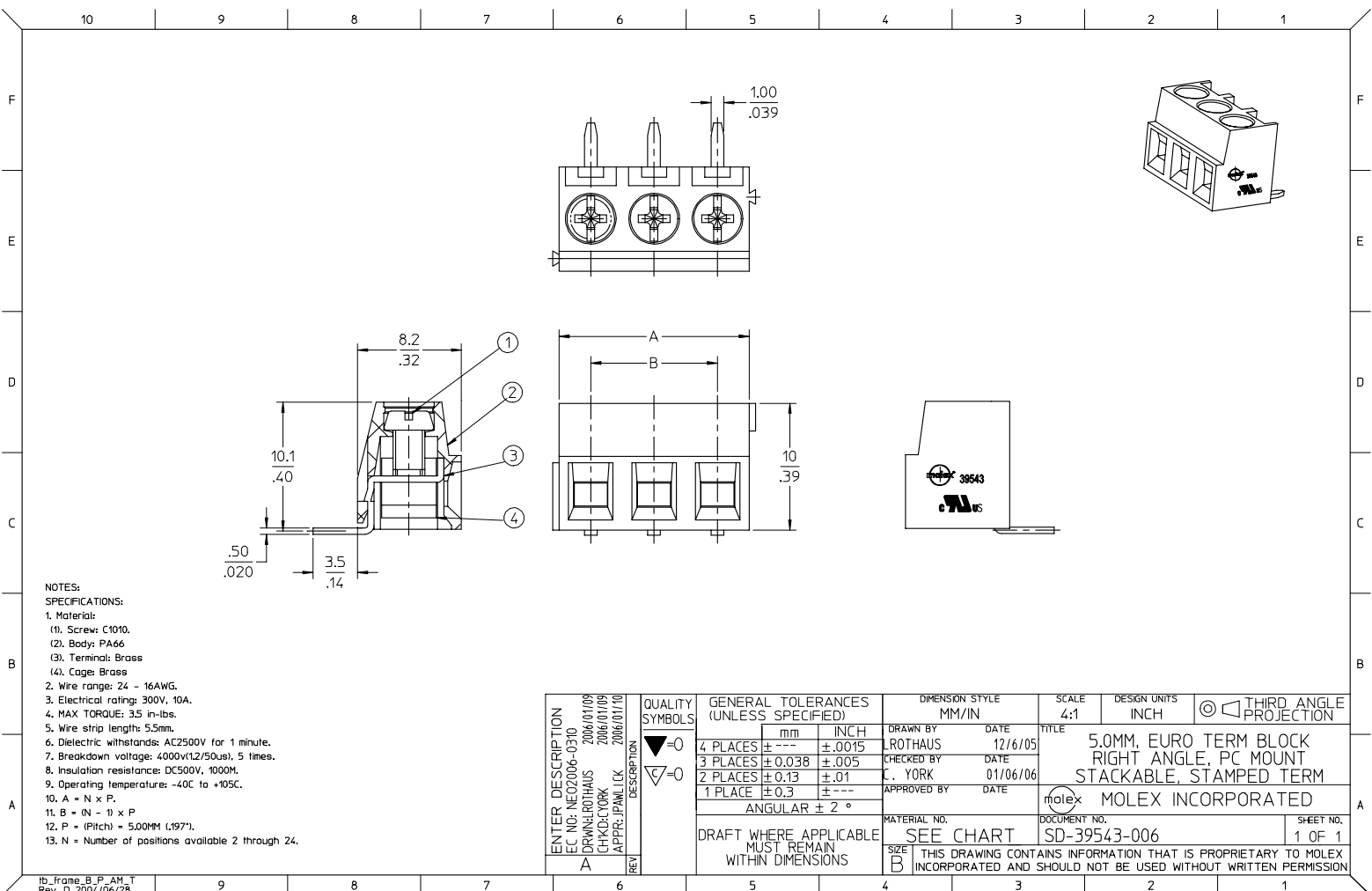
Stocking Distributor

Click to view price, real time Inventory, Delivery & Lifecycle Information:

[Molex Connector Corporation](#)
[0395937116](#)

For any questions, you can email us directly:

sales@integrated-circuit.com



- NOTES:
SPECIFICATIONS:
- Material:
 - (1). Screw: C1010.
 - (2). Body: PA66
 - (3). Terminal: Brass
 - (4). Cage: Brass
 - Wire range: 24 - 16AWG.
 - Electrical rating: 300V, 10A.
 - MAX TORQUE: 3.5 in-lbs.
 - Wire strip length: 5.5mm.
 - Dielectric withstands: AC2500V for 1 minute.
 - Breakdown voltage: 4000v(12/50us), 5 times.
 - Insulation resistance: DC500V, 1000M.
 - Operating temperature: -40C to +105C.
 - A = N x P.
 - B = (N - 1) x P
 - P = (Pitch) = 5.00MM (197").
 - N = Number of positions available 2 through 24.

| | | | | | | | |
|---|--|---|------------------------------|---|---|----------------------|------------------------|
| ENTER DESCRIPTION EC NO: NE02006-0310 DRAWN: LROTHAUS 2006/01/08 CHECKED: YORK 2006/01/08 APPR: JPAWLICK 2006/01/10 | QUALITY SYMBOLS ▽=0 ▽=0 | GENERAL TOLERANCES (UNLESS SPECIFIED) | | DIMENSION STYLE MM/IN | SCALE 4:1 | DESIGN UNITS INCH | THIRD ANGLE PROJECTION |
| | | 4 PLACES ± --- ± .0015 3 PLACES ± 0.038 ± .005 2 PLACES ± 0.13 ± .01 1 PLACE ± 0.3 ± --- | DRAWN BY LROTHAUS | DATE 12/6/05 | TITLE 5.0MM, EURO TERM BLOCK RIGHT ANGLE, PC MOUNT STACKABLE, STAMPED TERM | | |
| A | DRAFT WHERE APPLICABLE MUST REMAIN WITHIN DIMENSIONS | CHECKED BY C. YORK | DATE 01/06/06 | APPROVED BY | DATE | MOLEX INCORPORATED | SHEET NO. 1 OF 1 |
| REV | DESCRIPTION | MATERIAL NO. SEE CHART | DOCUMENT NO. SD-39543-006 | THIS DRAWING CONTAINS INFORMATION THAT IS PROPRIETARY TO MOLEX INCORPORATED AND SHOULD NOT BE USED WITHOUT WRITTEN PERMISSION | | | |

10 9 8 7 6 5 4 3 2 1

| Description | Circuit Size | Material Numbers Molded to Length | | | | | | | | | Material Numbers Stackable | | | | | | Dimensional Information | | | |
|--|--------------|-----------------------------------|-----------|-----------|------------------|-----------|-----------|------------------|-----------|-----------|----------------------------|-----------|-----------|--------|-------|--------|-------------------------|--|--|--|
| | | Black | | | Green | | | Black | | | Green | | | Dim. A | | Dim. B | | | | |
| | | 100% Tin | | | 100% Tin | | | 100% Tin | | | 100% Tin | | | mm | inch | mm | inch | | | |
| | | Printing Options | | | Printing Options | | | Printing Options | | | Printing Options | | | | | | | | | |
| None | 10A | 11A | None | 10A | 11A | None | 10A | 11A | None | 10A | 11A | None | 10A | 11A | | | | | | |
| 5.0mm, Euro Block, PC Mount, Right Angle | 2 | 395433102 | 395435102 | 395437102 | 395933102 | 395935102 | 395937102 | 395434502 | 395436502 | 395438502 | 395934502 | 395936502 | 395938502 | 10.00 | 0.394 | 5.00 | 0.197 | | | |
| 5.0mm, Euro Block, PC Mount, Right Angle | 3 | 395433103 | 395435103 | 395437103 | 395933103 | 395935103 | 395937103 | 395434503 | 395436503 | 395438503 | 395934503 | 395936503 | 395938503 | 15.00 | 0.591 | 10.00 | 0.394 | | | |
| 5.0mm, Euro Block, PC Mount, Right Angle | 4 | 395433104 | 395435104 | 395437104 | 395933104 | 395935104 | 395937104 | N/A | N/A | N/A | N/A | N/A | N/A | 20.00 | 0.787 | 15.00 | 0.591 | | | |
| 5.0mm, Euro Block, PC Mount, Right Angle | 5 | 395433105 | 395435105 | 395437105 | 395933105 | 395935105 | 395937105 | N/A | N/A | N/A | N/A | N/A | N/A | 25.00 | 0.984 | 20.00 | 0.787 | | | |
| 5.0mm, Euro Block, PC Mount, Right Angle | 6 | 395433106 | 395435106 | 395437106 | 395933106 | 395935106 | 395937106 | N/A | N/A | N/A | N/A | N/A | N/A | 30.00 | 1.181 | 25.00 | 0.984 | | | |
| 5.0mm, Euro Block, PC Mount, Right Angle | 7 | 395433107 | 395435107 | 395437107 | 395933107 | 395935107 | 395937107 | N/A | N/A | N/A | N/A | N/A | N/A | 35.00 | 1.378 | 30.00 | 1.181 | | | |
| 5.0mm, Euro Block, PC Mount, Right Angle | 8 | 395433108 | 395435108 | 395437108 | 395933108 | 395935108 | 395937108 | N/A | N/A | N/A | N/A | N/A | N/A | 40.00 | 1.575 | 35.00 | 1.378 | | | |
| 5.0mm, Euro Block, PC Mount, Right Angle | 9 | 395433109 | 395435109 | 395437109 | 395933109 | 395935109 | 395937109 | N/A | N/A | N/A | N/A | N/A | N/A | 45.00 | 1.772 | 40.00 | 1.575 | | | |
| 5.0mm, Euro Block, PC Mount, Right Angle | 10 | 395433110 | 395435110 | 395437110 | 395933110 | 395935110 | 395937110 | N/A | N/A | N/A | N/A | N/A | N/A | 50.00 | 1.969 | 45.00 | 1.772 | | | |
| 5.0mm, Euro Block, PC Mount, Right Angle | 11 | 395433111 | 395435111 | 395437111 | 395933111 | 395935111 | 395937111 | N/A | N/A | N/A | N/A | N/A | N/A | 55.00 | 2.166 | 50.00 | 1.969 | | | |
| 5.0mm, Euro Block, PC Mount, Right Angle | 12 | 395433112 | 395435112 | 395437112 | 395933112 | 395935112 | 395937112 | N/A | N/A | N/A | N/A | N/A | N/A | 60.00 | 2.362 | 55.00 | 2.166 | | | |
| 5.0mm, Euro Block, PC Mount, Right Angle | 13 | 395433113 | 395435113 | 395437113 | 395933113 | 395935113 | 395937113 | N/A | N/A | N/A | N/A | N/A | N/A | 65.00 | 2.559 | 60.00 | 2.362 | | | |
| 5.0mm, Euro Block, PC Mount, Right Angle | 14 | 395433114 | 395435114 | 395437114 | 395933114 | 395935114 | 395937114 | N/A | N/A | N/A | N/A | N/A | N/A | 70.00 | 2.756 | 65.00 | 2.559 | | | |
| 5.0mm, Euro Block, PC Mount, Right Angle | 15 | 395433115 | 395435115 | 395437115 | 395933115 | 395935115 | 395937115 | N/A | N/A | N/A | N/A | N/A | N/A | 75.00 | 2.953 | 70.00 | 2.756 | | | |
| 5.0mm, Euro Block, PC Mount, Right Angle | 16 | 395433116 | 395435116 | 395437116 | 395933116 | 395935116 | 395937116 | N/A | N/A | N/A | N/A | N/A | N/A | 80.00 | 3.150 | 75.00 | 2.953 | | | |
| 5.0mm, Euro Block, PC Mount, Right Angle | 17 | 395433117 | 395435117 | 395437117 | 395933117 | 395935117 | 395937117 | N/A | N/A | N/A | N/A | N/A | N/A | 85.00 | 3.346 | 80.00 | 3.150 | | | |
| 5.0mm, Euro Block, PC Mount, Right Angle | 18 | 395433118 | 395435118 | 395437118 | 395933118 | 395935118 | 395937118 | N/A | N/A | N/A | N/A | N/A | N/A | 90.00 | 3.543 | 85.00 | 3.346 | | | |
| 5.0mm, Euro Block, PC Mount, Right Angle | 19 | 395433119 | 395435119 | 395437119 | 395933119 | 395935119 | 395937119 | N/A | N/A | N/A | N/A | N/A | N/A | 95.00 | 3.740 | 90.00 | 3.543 | | | |
| 5.0mm, Euro Block, PC Mount, Right Angle | 20 | 395433120 | 395435120 | 395437120 | 395933120 | 395935120 | 395937120 | N/A | N/A | N/A | N/A | N/A | N/A | 100.00 | 3.937 | 95.00 | 3.740 | | | |
| 5.0mm, Euro Block, PC Mount, Right Angle | 21 | 395433121 | 395435121 | 395437121 | 395933121 | 395935121 | 395937121 | N/A | N/A | N/A | N/A | N/A | N/A | 105.00 | 4.134 | 100.00 | 3.937 | | | |
| 5.0mm, Euro Block, PC Mount, Right Angle | 22 | 395433122 | 395435122 | 395437122 | 395933122 | 395935122 | 395937122 | N/A | N/A | N/A | N/A | N/A | N/A | 110.00 | 4.331 | 105.00 | 4.134 | | | |
| 5.0mm, Euro Block, PC Mount, Right Angle | 23 | 395433123 | 395435123 | 395437123 | 395933123 | 395935123 | 395937123 | N/A | N/A | N/A | N/A | N/A | N/A | 115.00 | 4.528 | 110.00 | 4.331 | | | |
| 5.0mm, Euro Block, PC Mount, Right Angle | 24 | 395433124 | 395435124 | 395437124 | 395933124 | 395935124 | 395937124 | N/A | N/A | N/A | N/A | N/A | N/A | 120.00 | 4.724 | 115.00 | 4.528 | | | |

| | | | | | | | | |
|---|--|---|---|--|---|------------------------------|---------------------|--|
| SEE SHEET 1 IEC NO: NE02006-0310 DRAWN BY: LROTHAUS CHKD BY: C. YORK APPR: JIPAWLCK 2006/01/08 2006/01/08 2006/01/10 | QUALITY SYMBOLS ANGLAR ± 2° | GENERAL TOLERANCES (UNLESS SPECIFIED) 4 PLACES ± 0.015 3 PLACES ± 0.038 2 PLACES ± 0.13 1 PLACE ± 0.3 | DIMENSION STYLE MM/IN | SCALE 4:1 | DESIGN UNITS INCH | THIRD ANGLE PROJECTION | | |
| | | DRAWN BY: LROTHAUS CHECKED BY: C. YORK APPROVED BY: | DATE: 12/16/05 DATE: 01/06/06 DATE: | TITLE 5.0MM, EURO TERM. BLOCK RIGHT ANGLE, PC MOUNT, STACKABLE, STAMPED TERM. | MATERIAL NO. SEE CHART | DOCUMENT NO. SD-39543-006 | SHEET NO. 2 OF 2 | |
| | | DRAFT WHERE APPLICABLE MUST REMAIN WITHIN DIMENSIONS | | SIZE B | THIS DRAWING CONTAINS INFORMATION THAT IS PROPRIETARY TO MOLEX INCORPORATED AND SHOULD NOT BE USED WITHOUT WRITTEN PERMISSION | | | |
| | | MOLEX INCORPORATED | | | | | | |

9 8 7 6 5 4 3 2 1