

Excellent Integrated System Limited

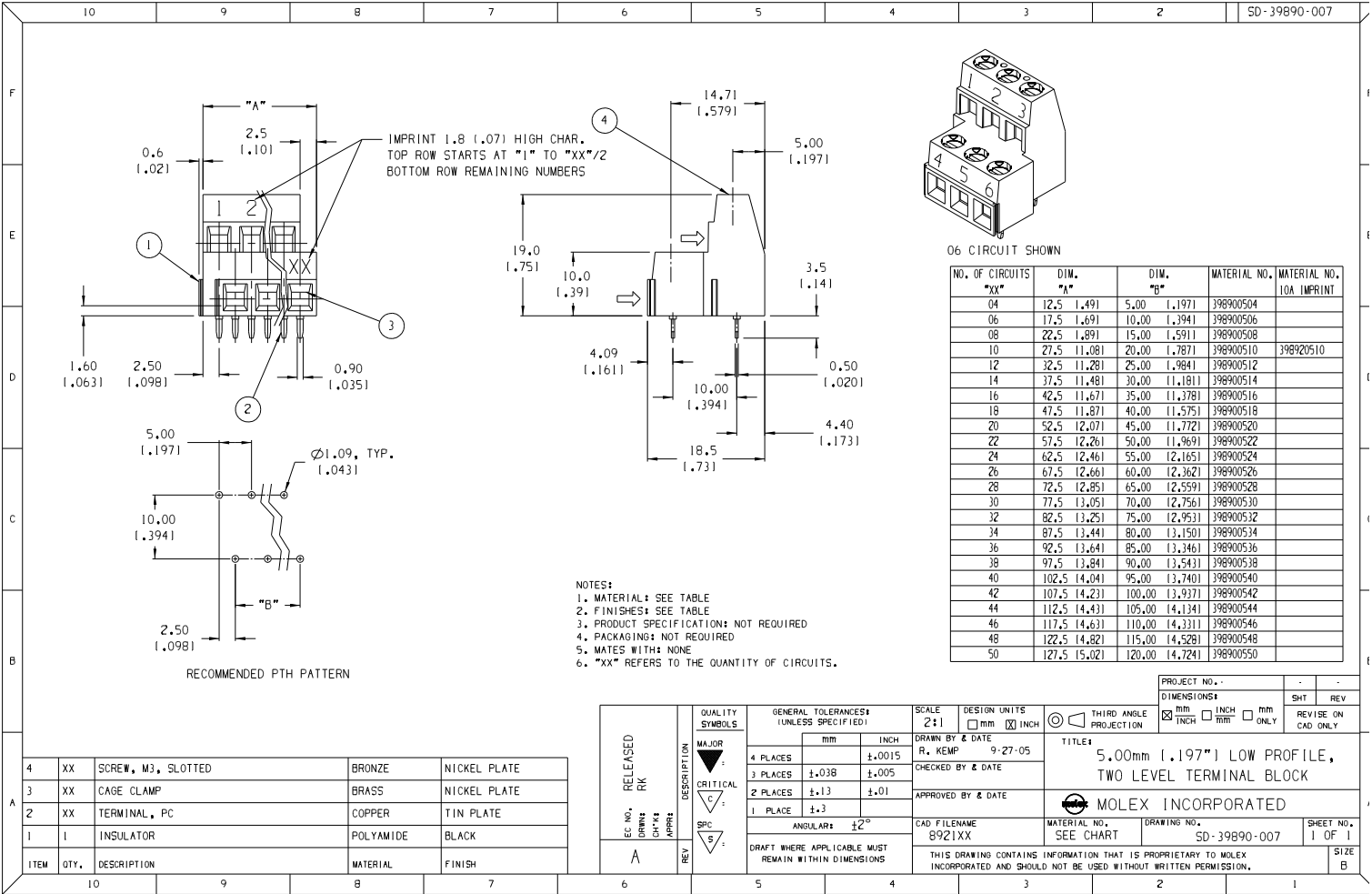
Stocking Distributor

Click to view price, real time Inventory, Delivery & Lifecycle Information:

[Molex Connector Corporation](#)
[0398900528](#)

For any questions, you can email us directly:

sales@integrated-circuit.com



| ITEM | QTY. | DESCRIPTION | MATERIAL | FINISH |
|------|------|--------------------|-----------|--------------|
| 4 | XX | SCREW, M3, SLOTTED | BRONZE | NICKEL PLATE |
| 3 | XX | CAGE CLAMP | BRASS | NICKEL PLATE |
| 2 | XX | TERMINAL, PC | COPPER | TIN PLATE |
| 1 | 1 | INSULATOR | POLYAMIDE | BLACK |

| | | | | |
|---|--|--|--|--|
| EC NO. RELEASED DRAWN: RK CH: K4 APPR: [Signature] REV: A | QUALITY SYMBOLS MAJOR [Symbol] CRITICAL [Symbol] SPC [Symbol] | GENERAL TOLERANCES: (UNLESS SPECIFIED) mm INCH 4 PLACES ±0.38 ±0.015 3 PLACES ±0.38 ±0.005 2 PLACES ±.13 ±.01 1 PLACE ±.3 | SCALE 2:1 DESIGN UNITS: <input type="checkbox"/> mm <input checked="" type="checkbox"/> INCH DRAWN BY & DATE: R. KEMP 9-27-05 CHECKED BY & DATE: APPROVED BY & DATE: | THIRD ANGLE PROJECTION DIMENSIONS: <input checked="" type="checkbox"/> mm <input type="checkbox"/> INCH <input type="checkbox"/> mm ONLY SHT REV REVISE ON CAD ONLY |
| | | CAD FILENAME: 8921XX DRAFT WHERE APPLICABLE MUST REMAIN WITHIN DIMENSIONS THIS DRAWING CONTAINS INFORMATION THAT IS PROPRIETARY TO MOLEX INCORPORATED AND SHOULD NOT BE USED WITHOUT WRITTEN PERMISSION. | TITLE: 5.00mm (1.197") LOW PROFILE, TWO LEVEL TERMINAL BLOCK MOLEX INCORPORATED MATERIAL NO. SEE CHART DRAWING NO. SD-39890-007 SHEET NO. 1 OF 1 SIZE B | |