

## Excellent Integrated System Limited

Stocking Distributor

Click to view price, real time Inventory, Delivery & Lifecycle Information:

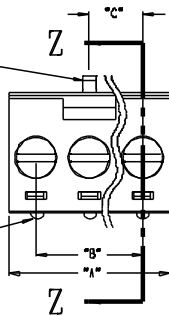
[Molex Connector Corporation](#)  
[0399800321](#)

For any questions, you can email us directly:

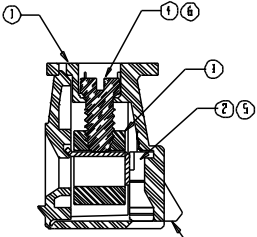
[sales@integrated-circuit.com](mailto:sales@integrated-circuit.com)

SD-39980-010

ALIGNMENT FEATURE PLACED  
IN LINE WITH SCREWDRIVER  
REMOVAL SLOT

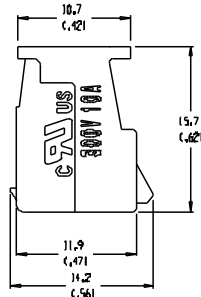
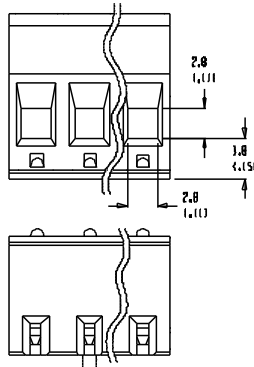


SEE NOTES



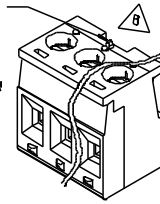
SECTION Z-Z

ALIGNMENT  
FEATURE



NOTES:  
SNAP FEATURES  
2 CKT 2 SNAPS  
3-24 CKT 3 SNAPS  
LOCATED ON ENDS AND  
ALIGNED WITH SCREWDRIVER  
REMOVAL SLOT

WINDOW ON PLUG  
ALIGNS WITH SNAP  
ON HEADER ALWAYS  
CENTERED ON PART  
OR ONE CIRCUIT TO  
THE LEFT OF CENTER



AUXILIARY VIEW  
SCALE 2:1

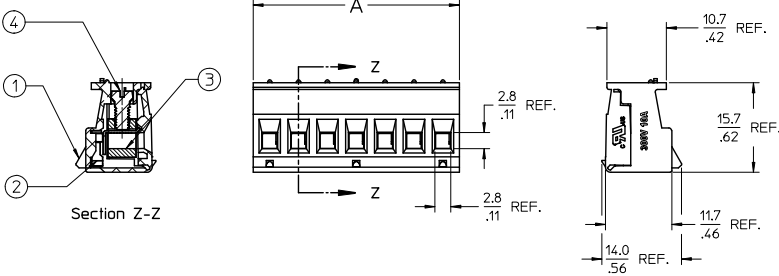
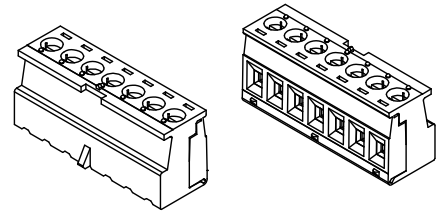
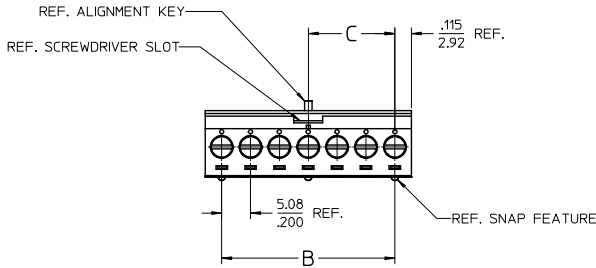
MATERIAL NO. (OPT. G30)	MATERIAL NO. STANDARD	NUMBER OF CIRCUITS *XX*	DIM. "A"	DIM. "B"	DIM. "C"
399810302	399800302	02	10.42	14.30	5.08
399810303	399800303	03	16.00	16.30	10.16
399810304	399800304	04	21.08	18.30	15.24
399810305	399800305	05	26.16	11.030	20.34
399810306	399800306	06	31.24	11.230	25.40
399810307	399800307	07	36.32	11.430	30.48
399810308	399800308	08	41.40	11.630	35.56
399810309	399800309	09	46.48	11.830	40.64
399810310	399800310	10	51.56	12.030	45.72
399810311	399800311	11	56.64	12.230	50.80
399810312	399800312	12	61.72	12.430	55.88
399810313	399800313	13	66.80	12.630	60.96
399810314	399800314	14	71.88	12.830	66.04
399810315	399800315	15	76.96	13.030	71.12
399810316	399800316	16	82.04	13.230	76.20
399810317	399800317	17	87.12	13.430	81.28
399810318	399800318	18	92.20	13.630	86.36
399810319	399800319	19	97.28	13.830	91.44
399810320	399800320	20	102.36	14.030	96.52
399810321	399800321	21	107.44	14.230	101.60
399810322	399800322	22	112.52	14.430	106.68
399810323	399800323	23	117.60	14.630	111.76
399810324	399800324	24	122.68	14.830	116.84

NOTES:  
1. MATERIALS SEE TABLE  
2. FINISHES: SEE TABLE  
3. PRODUCT SPECIFICATIONS NOT REQUIRED  
4. PACKAGING: NOT REQUIRED  
5. MATES WITH 98 SERIES HEADERS.

ITEM	QTY.	DESCRIPTION	MATERIAL	FINISH
6	XX	SCREW, M3 X 0.5, SLOTTED (1-830 OPTION)	PHOS. BRONZE	TIN
5	XX	TERMINAL (1-630 OPTION)	PHOS. BRONZE	GOLD
4	XX	SCREW, M3 X 0.5, SLOTTED	STEEL	ZN, CLEAR CHROMATE
3	XX	RISING CASE	BRASS	NICKEL
2	XX	TERMINAL	PHOS. BRONZE	TIN
1	1	INSULATOR	NYLON	BLACK

EE NO. 11499 DRWG. REV. 3-1-04 (DATE) (REV.) (APP.) (REV.)	QUALITY SYMBOLS MAJOR OPTIONAL MINOR	GENERAL TOLERANCES UNLESS SPECIFIED (mm) (in)	SCALE 3:1 DESIGN UNIT: mm (X) INCH	DRAWN BY & DATE R. KEMP 3-27-02 CHECKED BY & DATE ANP 3-27-02 APPROVED BY & DATE P. WALZ 3-27-02	THIRD ANGLE PROJECTION DIMENSIONS: (mm) (in) (mm) (in) ONLY	PROJECT NO. _____ DIMENSIONS: (mm) (in) (mm) (in) ONLY	SHEET NO. 1 OF 1
		DRIFT WHERE APPLICABLE MUST REMAIN WITHIN DIMENSIONS	THIS DRAWING CONTAINS INFORMATION THAT IS PROPRIETARY TO MOLEX INCORPORATED AND SHOULD NOT BE USED WITHOUT WRITTEN PERMISSION.	TITLE: SR EUROSTYLE PLUG, ASSEMBLY 5.08 (.2001)	MOLEX INCORPORATED	MATERIAL NO. SEE CHART DRAWING NO. SD-39980-010	SIZE B

(A) REF. THIS DRAWING IS SUPERSEDED CADKEY DOC SD-39980-010 REV-B



NOTES:

1. MATERIAL: SEE TABLE
2. FINISHES: SEE TABLE
3. ELECTRICAL SPECIFICATIONS  
VOLTAGE RATING: 300V  
CURRENT RATING: 10 AMPS
4. WIRE RANGE: 24-12AWG
5. WIRE STRIP: 6mm (.25 IN)
6. TIGHTENING TORQUE: .45NM (4 IN.LBS )
7. XX REFERS TO NUMBER OF CIRCUITS

CIRCUITS	PART NO.	DIM-A mm ±0.25	DIM-A IN ±.010	DIM-B mm	DIM-B IN	DIM-C mm	DIM-C IN
2	399800302	10.92	.430	5.08	.200	5.08	.200
3	399800303	16.00	.630	10.16	.400	10.16	.400
4	399800304	21.08	.830	15.24	.600	10.16	.400
5	399800305	26.16	1.030	20.32	.800	10.16	.400
6	399800306	31.24	1.230	25.40	1.000	15.24	.600
7	399800307	36.32	1.430	30.48	1.200	15.24	.600
8	399800308	41.40	1.630	35.56	1.400	20.34	.800
9	399800309	46.48	1.830	40.64	1.600	20.34	.800
10	399800310	51.56	2.030	45.72	1.800	25.40	1.000
11	399800311	56.64	2.230	50.80	2.000	25.40	1.000
12	399800312	61.72	2.430	55.88	2.200	30.48	1.200
13	399800313	66.80	2.630	60.96	2.400	30.48	1.200
14	399800314	71.88	2.830	66.04	2.600	35.56	1.400
15	399800315	76.96	3.030	71.12	2.800	35.56	1.400
16	399800316	82.04	3.230	76.20	3.000	40.64	1.600
17	399800317	87.12	3.430	81.28	3.200	40.64	1.600
18	399800318	92.20	3.630	86.36	3.400	45.72	1.800
19	399800319	97.28	3.830	91.44	3.600	45.72	1.800
20	399800320	102.36	4.030	96.52	3.800	50.80	2.000
21	399800321	107.44	4.230	101.60	4.000	50.80	2.000
22	399800322	112.52	4.430	106.68	4.200	55.88	2.200
23	399800323	117.60	4.630	111.76	4.400	55.88	2.200
24	399800324	122.68	4.830	116.84	4.600	60.96	2.400

4	XX	SCREW, M3 X 0.5	STEEL	ZN, CLEAR CHROMATE
3	XX	CAGE	BRASS	NICKEL PLATED
2	XX	TERMINAL	Cu ALLOY	TIN PLATED
1	1	PLUG BODY	NYLON	BLACK
ITEM	QTY.	DESCRIPTION	MATERIAL	FINISH

REDRAWN, REMOVE GOLD OPT EC NO: IPG2016-1588 DRAWN BY: RSTONE 2016/04/13 CHECKED BY: MZILELE INSKI 2016/04/20 APPROVED BY: BRUPERT 2016/04/22 DESCRIPTION: A REV:	QUALITY SYMBOLS	GENERAL TOLERANCES (UNLESS SPECIFIED)	DIMENSION STYLE	SCALE	DESIGN UNITS	THIRD ANGLE PROJECTION
	▽=0 ▽=0	mm INCH	MM/IN	2:1	INCH	
		4 PLACES ± --- ± ---	DRAWN BY: RSTONE DATE: 2016/04/13	TITLE: SINGLE ROW EURO PLUG 5,08MM (.200 IN) PITCH		
		3 PLACES ± --- ± .005	CHECKED BY: MZILELE INSKI DATE: 2016/04/20	SHEET NO. 1 OF 1		
	2 PLACES ± 0.13 ± .01	APPROVED BY: BRUPERT DATE: 2016/04/22				
	1 PLACE ± 0.3 ± ---	ANGULAR ± --- °		MATERIAL NO.	DOCUMENT NO.	
	0 PLACE ± --- ± ---	DRAFT WHERE APPLICABLE MUST REMAIN WITHIN DIMENSIONS		SEE TABLE		SD-39980-012
THIS DRAWING CONTAINS INFORMATION THAT IS PROPRIETARY TO MOLEX INCORPORATED AND SHOULD NOT BE USED WITHOUT WRITTEN PERMISSION						