

Excellent Integrated System Limited

Stocking Distributor

Click to view price, real time Inventory, Delivery & Lifecycle Information:

[Molex Connector Corporation](#)
[0399800323](#)

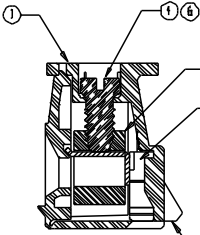
For any questions, you can email us directly:

sales@integrated-circuit.com

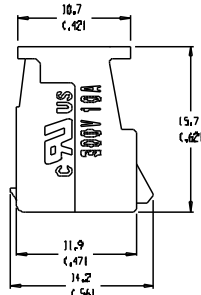
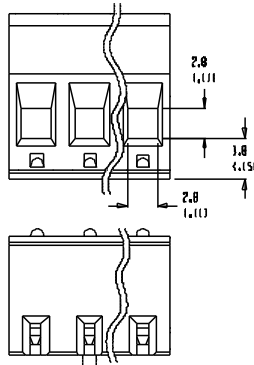
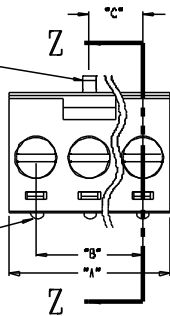
SD-39980-010

ALIGNMENT FEATURE PLACED
IN LINE WITH SCREWDRIVER
REMOVAL SLOT

SEE NOTES

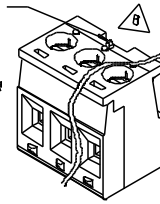


SECTION Z-Z



NOTES:
SNAP FEATURES
2 CKT 2 SNAPS
3-24 CKT 3 SNAPS
LOCATED ON ENDS AND
ALIGNED WITH SCREWDRIVER
REMOVAL SLOT

WINDOW ON PLUG
ALIGNS WITH SNAP
ON HEADER ALWAYS
CENTERED ON PART
OR ONE CIRCUIT TO
THE LEFT OF CENTER



AUXILIARY VIEW
SCALE 2:1

MATERIAL NO. (OPT. -G30)	MATERIAL NO. STANDARD	NUMBER OF CIRCUITS *XX*	DIM. "A"	DIM. "B"	DIM. "C"
399810302	399800302	02	10.42	1.430	5.08
399810303	399800303	03	16.00	1.630	10.16
399810304	399800304	04	21.08	1.830	15.24
399810305	399800305	05	26.16	1.930	20.34
399810306	399800306	06	31.24	1.930	25.40
399810307	399800307	07	36.32	1.930	30.48
399810308	399800308	08	41.40	1.930	35.56
399810309	399800309	09	46.48	1.930	40.64
399810310	399800310	10	51.56	1.930	45.72
399810311	399800311	11	56.64	1.930	50.80
399810312	399800312	12	61.72	1.930	55.88
399810313	399800313	13	66.80	1.930	60.96
399810314	399800314	14	71.88	1.930	66.04
399810315	399800315	15	76.96	1.930	71.12
399810316	399800316	16	82.04	1.930	76.20
399810317	399800317	17	87.12	1.930	81.28
399810318	399800318	18	92.20	1.930	86.36
399810319	399800319	19	97.28	1.930	91.44
399810320	399800320	20	102.36	1.930	96.52
399810321	399800321	21	107.44	1.930	101.60
399810322	399800322	22	112.52	1.930	106.68
399810323	399800323	23	117.60	1.930	111.76
399810324	399800324	24	122.68	1.930	116.84

- NOTES:
1. MATERIALS SEE TABLE
2. FINISHES SEE TABLE
3. PRODUCT SPECIFICATIONS NOT REQUIRED
4. PACKAGING NOT REQUIRED
5. MATES WITH 98 SERIES HEADERS.

ITEM	QTY.	DESCRIPTION	MATERIAL	FINISH
6	XX	SCREW, M3 X 0.5, SLOTTED (1-830 OPTION)	PHOS. BRONZE	TIN
5	XX	TERMINAL (1-630 OPTION)	PHOS. BRONZE	GOLD
4	XX	SCREW, M3 X 0.5, SLOTTED	STEEL	ZN, CLEAR CHROMATE
3	XX	RISING CASE	BRASS	NICKEL
2	XX	TERMINAL	PHOS. BRONZE	TIN
1	1	INSULATOR	NYLON	BLACK

EE No. 11499
Date: 3-31-04
REV: B

QUALITY SYMBOLS:
MAJOR
OPTIONAL
SPEC

GENERAL TOLERANCES UNLESS SPECIFIED:

F PLACES	±.030	±.0015
M PLACES	±.038	±.005
S PLACES	±.13	±.01
L PLACES	±.3	

 ANGULARITY ±2°

SCALE: 3:1
DESIGN UNIT: mm [X] INCH
DRAWN BY & DATE: R. KEMP 3-27-02
CHECKED BY & DATE: AMP 3-27-02
APPROVED BY & DATE: P. WALZ 3-27-02
CAD FILENAME: 9809XX

PROJECT NO.:

DIMENSIONS:
 mm INCH
 mm ONLY INCH ONLY

THIRD ANGLE PROJECTION

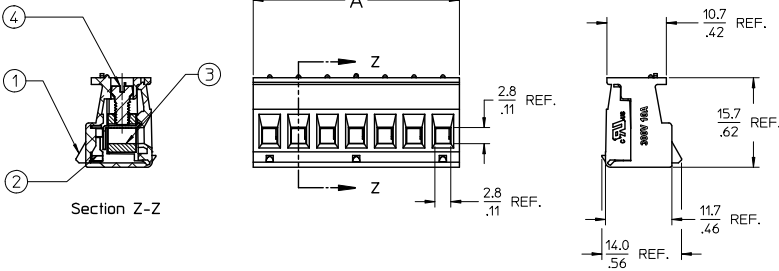
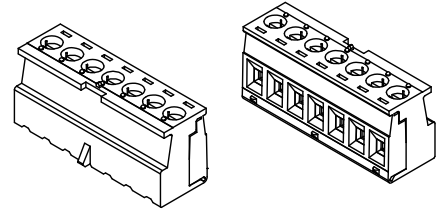
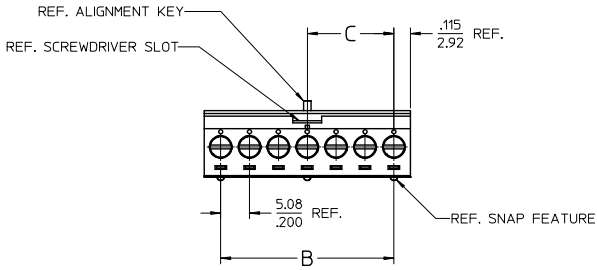
TITLE:
SR EUROSTYLE PLUG, ASSEMBLY
5.08 (.2001)

MOLEX INCORPORATED

MATERIAL NO. SEE CHART
DRAWING NO. SD-39980-010
SHEET NO. 1 OF 1

THIS DRAWING CONTAINS INFORMATION THAT IS PROPRIETARY TO MOLEX INCORPORATED AND SHOULD NOT BE USED WITHOUT WRITTEN PERMISSION.

(A) REF. THIS DRAWING IS SUPERSEDED CADKEY DOC SD-39980-010 REV-B



NOTES:

1. MATERIAL: SEE TABLE
2. FINISHES: SEE TABLE
3. ELECTRICAL SPECIFICATIONS
VOLTAGE RATING: 300V
CURRENT RATING: 10 AMPS
4. WIRE RANGE: 24-12AWG
5. WIRE STRIP: 6mm (.25 IN)
6. TIGHTENING TORQUE: .45NM (4 IN.LBS)
7. XX REFERS TO NUMBER OF CIRCUITS

CIRCUITS	PART NO.	DIM-A mm ±0.25	DIM-A IN ±.010	DIM-B mm	DIM-B IN	DIM-C mm	DIM-C IN
2	399800302	10.92	.430	5.08	.200	5.08	.200
3	399800303	16.00	.630	10.16	.400	10.16	.400
4	399800304	21.08	.830	15.24	.600	10.16	.400
5	399800305	26.16	1.030	20.32	.800	10.16	.400
6	399800306	31.24	1.230	25.40	1.000	15.24	.600
7	399800307	36.32	1.430	30.48	1.200	15.24	.600
8	399800308	41.40	1.630	35.56	1.400	20.34	.800
9	399800309	46.48	1.830	40.64	1.600	20.34	.800
10	399800310	51.56	2.030	45.72	1.800	25.40	1.000
11	399800311	56.64	2.230	50.80	2.000	25.40	1.000
12	399800312	61.72	2.430	55.88	2.200	30.48	1.200
13	399800313	66.80	2.630	60.96	2.400	30.48	1.200
14	399800314	71.88	2.830	66.04	2.600	35.56	1.400
15	399800315	76.96	3.030	71.12	2.800	35.56	1.400
16	399800316	82.04	3.230	76.20	3.000	40.64	1.600
17	399800317	87.12	3.430	81.28	3.200	40.64	1.600
18	399800318	92.20	3.630	86.36	3.400	45.72	1.800
19	399800319	97.28	3.830	91.44	3.600	45.72	1.800
20	399800320	102.36	4.030	96.52	3.800	50.80	2.000
21	399800321	107.44	4.230	101.60	4.000	50.80	2.000
22	399800322	112.52	4.430	106.68	4.200	55.88	2.200
23	399800323	117.60	4.630	111.76	4.400	55.88	2.200
24	399800324	122.68	4.830	116.84	4.600	60.96	2.400

4	XX	SCREW, M3 X 0.5	STEEL	ZN, CLEAR CHROMATE
3	XX	CAGE	BRASS	NICKEL PLATED
2	XX	TERMINAL	Cu ALLOY	TIN PLATED
1	1	PLUG BODY	NYLON	BLACK
ITEM	QTY.	DESCRIPTION	MATERIAL	FINISH

REDRAWN REMOVE GOLD OPT EC NO: IPGZ016-1588 DRAWN BY: RSTONE 2016/04/13 CHECKED BY: MZILEL INSKI 2016/04/20 APPROVED BY: BRUPERT 2016/04/22 DESCRIPTION: A REV:	QUALITY SYMBOLS	GENERAL TOLERANCES (UNLESS SPECIFIED)	DIMENSION STYLE	SCALE	DESIGN UNITS	THIRD ANGLE PROJECTION	
	▽=0 ▽=0	mm INCH 4 PLACES ± --- ± --- 3 PLACES ± --- ± .005 2 PLACES ± 0.13 ± .01 1 PLACE ± 0.3 ± --- 0 PLACE ± --- ± ---	MM/IN	2:1	INCH	DRAWN BY: RSTONE DATE: 2016/04/13 CHECKED BY: MZILEL INSKI DATE: 2016/04/20 APPROVED BY: BRUPERT DATE: 2016/04/22	
		ANGULAR ± --- °	DRAFT WHERE APPLICABLE MUST REMAIN WITHIN DIMENSIONS	SEE TABLE			TITLE: SINGLE ROW EURO PLUG 5.08MM (.200 IN) PITCH molex DOCUMENT NO. SD-39980-012 SHEET NO. 1 OF 1
							THIS DRAWING CONTAINS INFORMATION THAT IS PROPRIETARY TO MOLEX INCORPORATED AND SHOULD NOT BE USED WITHOUT WRITTEN PERMISSION