

Excellent Integrated System Limited

Stocking Distributor

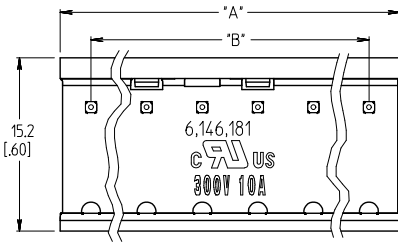
Click to view price, real time Inventory, Delivery & Lifecycle Information:

[Molex Connector Corporation](#)
[0399900415](#)

For any questions, you can email us directly:

sales@integrated-circuit.com

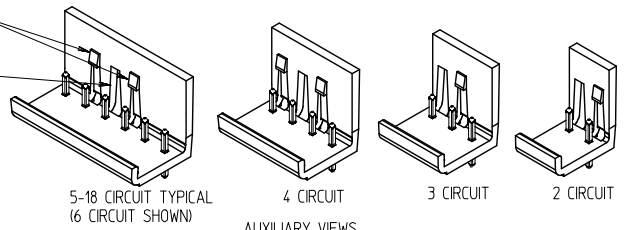
10 9 8 7 6 5 4 3 2 39990



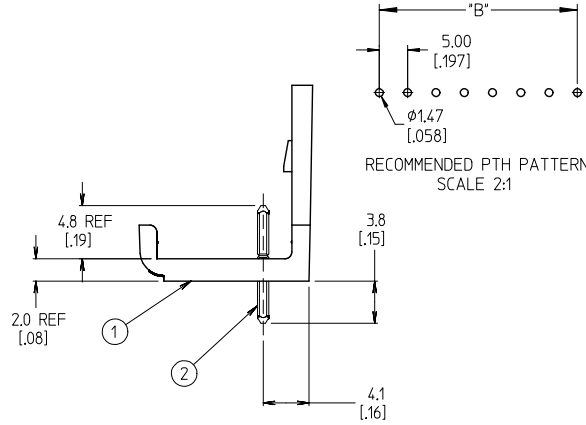
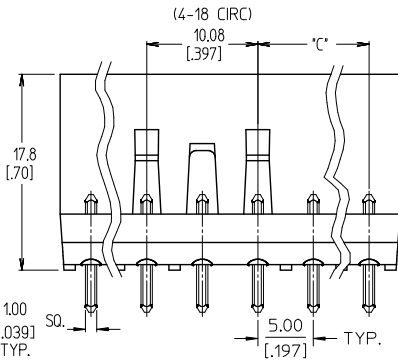
NOTES:

1. MATERIAL: SEE TABLE
2. FINISHES: SEE TABLE
3. MATES WITH 99 SERIES PLUG
4. INCH DIMENSIONS ARE SHOWN IN BRACKETS [XXX].
5. "XX" REFERS TO QTY OF CIRCUITS
6. ALL COMPONENTS ARE ROHS COMPLIANT.

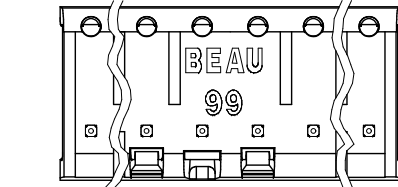
DUAL SNAP FEATURE
EITHER SIDE OF
ALIGNMENT FEATURE
ALIGNMENT FEATURE TO
MATCH FEATURE ON PLUG



AUXILIARY VIEWS
SCALE 1:1



RECOMMENDED PTH PATTERN
SCALE 2:1



| ASSEMBLY MATERIAL NO. (STANDARD) | NUMBER OF CIRCUITS "XX" | DIM. ± 0.25 "A" [± .101] | DIM. "B" | DIM. "C" |
|----------------------------------|-------------------------|--------------------------|---------------|---------------|
| 399900402 | 02 | 10.59 [0.417] | 5.00 [0.197] | N/A |
| 399900403 | 03 | 15.60 [0.614] | 10.00 [0.394] | 5.00 [0.197] |
| 399900404 | 04 | 20.60 [0.811] | 15.00 [0.591] | 5.00 [0.197] |
| 399900405 | 05 | 25.60 [1.008] | 20.00 [0.787] | 5.00 [0.197] |
| 399900406 | 06 | 30.61 [1.205] | 25.00 [0.984] | 10.00 [0.394] |
| 399900407 | 07 | 35.61 [1.402] | 30.00 [1.181] | 10.00 [0.394] |
| 399900408 | 08 | 40.61 [1.599] | 35.00 [1.378] | 15.00 [0.591] |
| 399900409 | 09 | 45.62 [1.796] | 40.00 [1.575] | 15.00 [0.591] |
| 399900410 | 10 | 50.62 [1.993] | 45.00 [1.772] | 20.00 [0.787] |
| 399900411 | 11 | 55.63 [2.190] | 50.00 [1.968] | 20.00 [0.787] |
| 399900412 | 12 | 60.63 [2.387] | 55.00 [2.165] | 25.00 [0.984] |
| 399900413 | 13 | 65.63 [2.584] | 60.00 [2.362] | 25.00 [0.984] |
| 399900414 | 14 | 70.64 [2.781] | 65.00 [2.559] | 30.00 [1.181] |
| 399900415 | 15 | 75.64 [2.978] | 70.00 [2.756] | 30.00 [1.181] |
| 399900416 | 16 | 80.65 [3.175] | 75.00 [2.953] | 35.00 [1.378] |
| 399900417 | 17 | 85.65 [3.372] | 80.00 [3.150] | 35.00 [1.378] |
| 399900418 | 18 | 90.65 [3.569] | 85.00 [3.346] | 40.00 [1.575] |

| ITEM | QTY | DESCRIPTION | MATERIAL | FINISH |
|------|-----|-----------------------|----------|--------|
| 2 | XX | HEADER PIN (STANDARD) | BRASS | TIN |
| 1 | 1 | MOLDING | NYLON | BLACK |

| | | | | | | | | | | |
|---|-------------------------------|--|-----------------------|------------------------|---------------------|---------------------------|--------------------|---|--|--|
| REMOVED GOLD OPT EC NO: ICG2016-1388 DRAWN BY: CHAKRAJEEVINSKI 2016/04/20 APPROVED BY: APPREBROUPT 2016/04/22 | QUALITY SYMBOLS ▽=0 ▽=0 | GENERAL TOLERANCES (UNLESS SPECIFIED) | | DIMENSION STYLE: MM/IN | | SCALE: INCH | DESIGN UNITS: INCH | THIRD ANGLE PROJECTION | | |
| | | 4 PLACES ± --- ± --- | 3 PLACES ± --- ± .005 | 2 PLACES ± 0.13 ± .01 | 1 PLACE ± 0.3 ± --- | DRAWN BY: C. YORK | DATE: 2003/08/12 | TITLE: 5.00/.197 SINGLE ROW EUROSTYLE HEADER ASSEMBLY | | |
| | | ANGULAR ± 2° | | | | CHECKED BY: P. WALTZ | DATE: 2003/12/04 | MATERIAL NO. G. ROBERTSON 2003/12/08 | | |
| | | DRAFT WHERE APPLICABLE MUST REMAIN WITHIN DIMENSIONS | | | | APPROVED BY: G. ROBERTSON | DATE: 2003/12/08 | DOCUMENT NO. SD-39990-002 | | |
| THIS DRAWING CONTAINS INFORMATION THAT IS PROPRIETARY TO MOLEX INCORPORATED AND SHOULD NOT BE USED WITHOUT WRITTEN PERMISSION | | SHEET NO. 1 OF 1 | | | | | | | | |

9 8 7 6 5 4 3 2 1