

Excellent Integrated System Limited

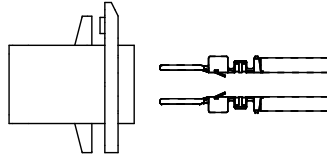
Stocking Distributor

Click to view price, real time Inventory, Delivery & Lifecycle Information:

[Molex Connector Corporation](#)
[0456260008](#)

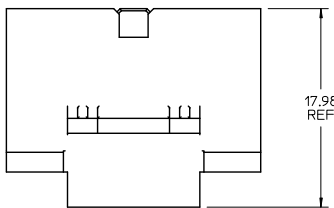
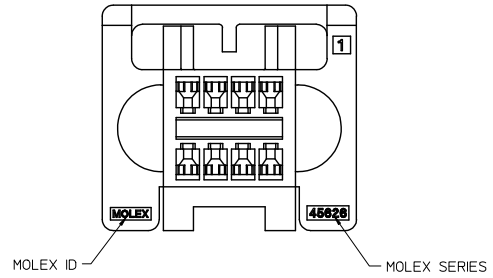
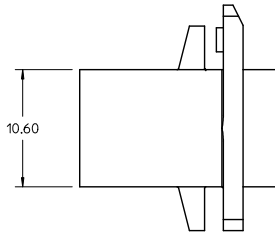
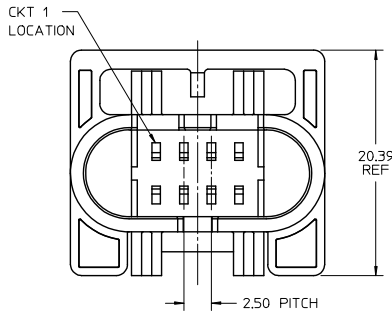
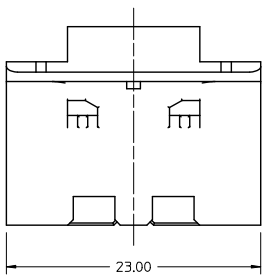
For any questions, you can email us directly:
sales@integrated-circuit.com

TERMINALS TO BE ORIENTED AND LOADED INTO THE HOUSING AS SHOWN BELOW

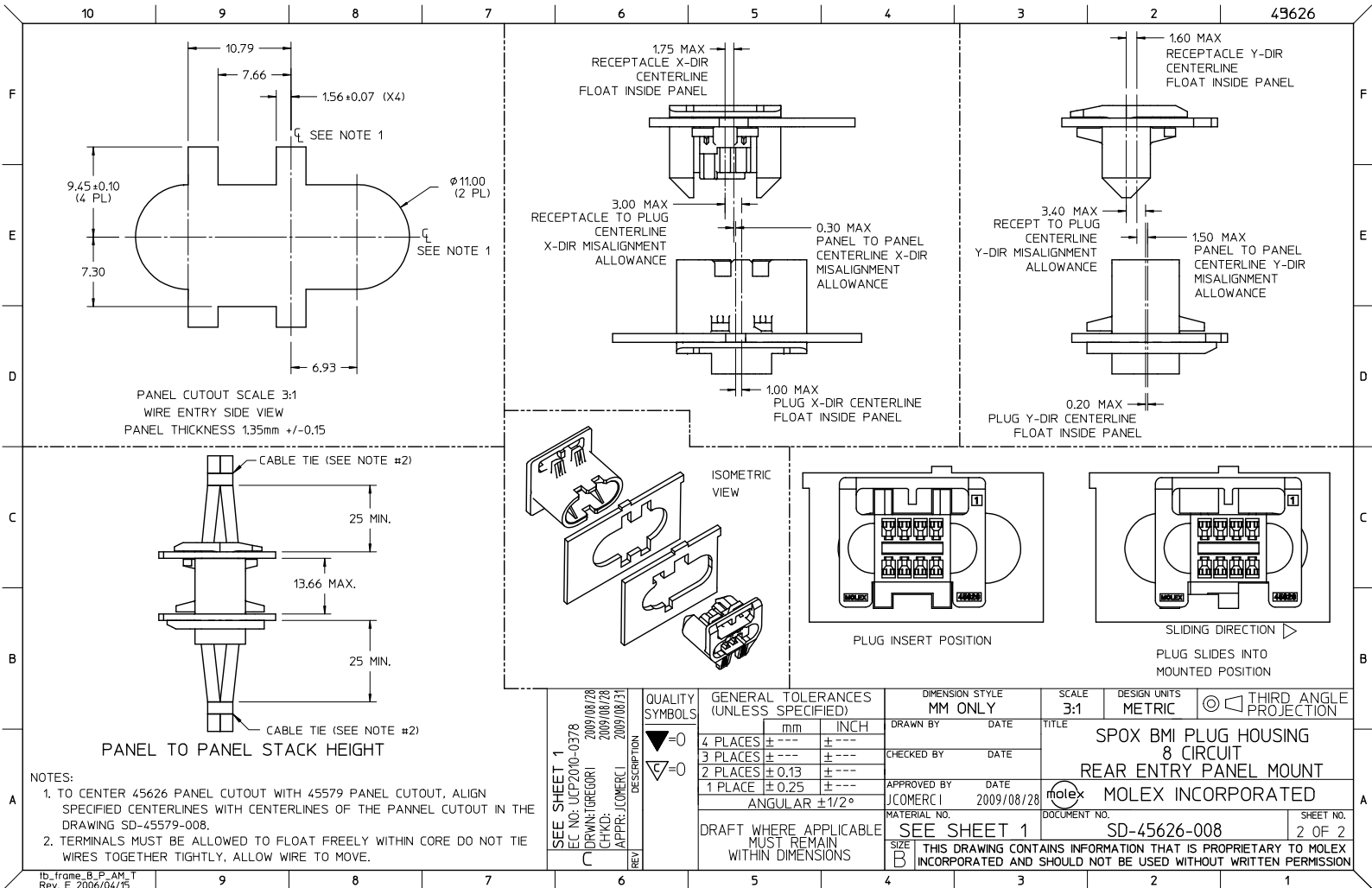


NOTES:

1. MATERIAL: POLYESTER, UL94V-0, COLOR: BLACK.
2. PRODUCT CONFORMS TO PRODUCT SPECIFICATION PS-45779-001.
3. USES MALE CRIMP TERMINALS SERIES 45627.
4. PART MATES WITH MOLEX RECEPTACLE SERIES 45579.
5. PACKAGING: BULK.
6. SEE PAGE 2 OF 2 FOR PANEL CUTOUT DIMENSIONS AND THE ALLOWED PANEL TO PANEL MISALIGNMENT.
7. USE MOLEX EXTRACTION TOOL 63813-1400 TO REMOVE TERMINALS WITHOUT DAMAGING THE PLUG CORE. RELOAD CORE WITH NEW TERMINAL ONLY. REMOVED TERMINAL AFTER EXTRACTION NOT USABLE.



REVISED EC NO: LUCP2010-0378 DRWN: GREGORI 2009/08/28 CHKD: JCOMERC 2009/08/28 APPR: JCOMERC 2009/08/31	QUALITY SYMBOLS DESCRIPTION	GENERAL TOLERANCES (UNLESS SPECIFIED)		DIMENSION STYLE MM ONLY		SCALE 3:1	DESIGN UNITS METRIC	THIRD ANGLE PROJECTION
		4 PLACES ± --- ± ---	3 PLACES ± --- ± ---	DRAWN BY DATE	TITLE SPOX BMI PLUG HOUSING 8 CIRCUIT REAR ENTRY PANEL MOUNT			
		2 PLACES ± 0.13 ± ---	1 PLACE ± 0.25 ± ---	CHECKED BY DATE	MOLEX INCORPORATED			
		ANGULAR ± 1/2°		APPROVED BY JCOMERC 2009/08/28	MATERIAL NO. 456260008	DOCUMENT NO. SD-45626-008	SHEET NO. 1 OF 2	
DRAFT WHERE APPLICABLE MUST REMAIN WITHIN DIMENSIONS		THIS DRAWING CONTAINS INFORMATION THAT IS PROPRIETARY TO MOLEX INCORPORATED AND SHOULD NOT BE USED WITHOUT WRITTEN PERMISSION						



1b_frame_B_P_AM_T
Rev. E 2006/04/15

QUALITY SYMBOLS ▽=0 ▽=0	GENERAL TOLERANCES (UNLESS SPECIFIED)		DIMENSION STYLE MM ONLY		SCALE 3:1	DESIGN UNITS METRIC	THIRD ANGLE PROJECTION
	4 PLACES ± --- ± --- 3 PLACES ± --- ± --- 2 PLACES ± 0.13 ± --- 1 PLACE ± 0.25 ± ---	mm INCH	DRAWN BY JCOMERC1	DATE 2009/08/28	TITLE SPOX BMI PLUG HOUSING 8 CIRCUIT REAR ENTRY PANEL MOUNT	MOLEX INCORPORATED	SHEET NO. 2 OF 2
	ANGULAR ±1/2°		CHECKED BY JCOMERC1	DATE 2009/08/28	APPROVED BY JCOMERC1	DATE 2009/08/28	DOCUMENT NO. SD-45626-008
	DRAFT WHERE APPLICABLE MUST REMAIN WITHIN DIMENSIONS		MATERIAL NO. SEE SHEET 1		THIS DRAWING CONTAINS INFORMATION THAT IS PROPRIETARY TO MOLEX INCORPORATED AND SHOULD NOT BE USED WITHOUT WRITTEN PERMISSION		

1b_frame_B_P_AM_T
Rev. E 2006/04/15