

Excellent Integrated System Limited

Stocking Distributor

Click to view price, real time Inventory, Delivery & Lifecycle Information:

[CNC Tech](#)
[3030-06-0103-99](#)

For any questions, you can email us directly:
sales@integrated-circuit.com

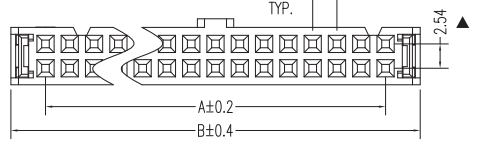
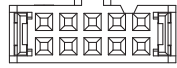
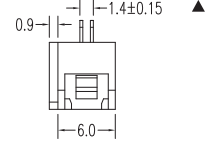
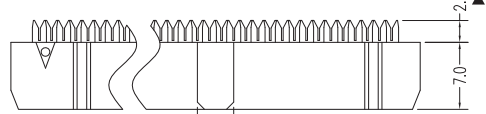
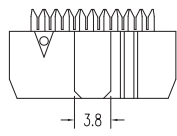
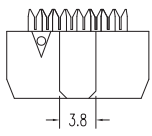
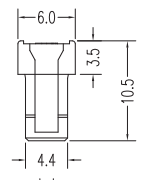
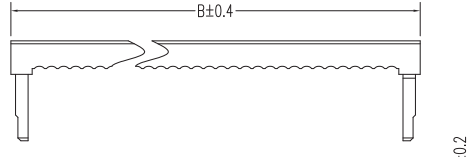
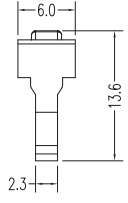
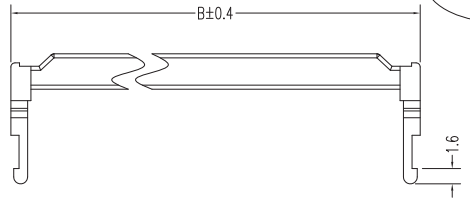
NUMBER OF POSITIONS	DIMENSION	
	A	B
08	7.62	14.86
10	10.16	17.40
12	12.70	19.94
14	15.24	22.48
16	17.78	25.02
18	20.32	27.56
20	22.86	30.10
22	25.40	32.64
24	27.94	35.18
26	30.48	37.72
30	35.56	42.80
34	40.64	47.88
36	43.18	50.42
40	48.26	55.50
44	53.34	60.58
50	60.96	68.20
60	73.66	80.90
64	78.74	85.98

NOTES:
 Insulator Material: PBT, UL 94V-0
 Contact Plating: Nickel 50μ"
 Contact Material: Brass

Current Rating : 1A AC,DC
 Contact Resistance: 20MΩ Max.
 Dielectric Withstanding: AC 500V
 Insulator Resistance: 1000MΩ Min.
 Operating Temp.: -40°C~+105°C



REV.	DESCRIPTION	DATE
A	RELEASE	2012/11/7



8P

10P-12P

14P-64P

Mating Part Number		
3020-ALL	3010-XX-001-11-XX	3010-XX-001-13-XX
3010-XX-002-13-XX	3010-XX-003-13-XX	

UNLESS TOLERANCE		DRAW BY		CnC Tech, LLC			
GENERAL	ANGLE	DESIGN BY	CHECK BY			Part NO.	
X. ± 0.30	X.* ± 3.0°					3030-XX-0103-99	
.X ± 0.25	.X* ± 2.0°					DRW NO:	REV: A
.XX ± 0.20	.XX* ± 1.0°						
.XXX ± 0.10	.XXX* ± 0.5°						
SCALE		SHEET	UNIT				
1:1		1/1	MM				