

Excellent Integrated System Limited

Stocking Distributor

Click to view price, real time Inventory, Delivery & Lifecycle Information:

[Visual Communications Company, LLC](#)
[CMC_441_ATP](#)

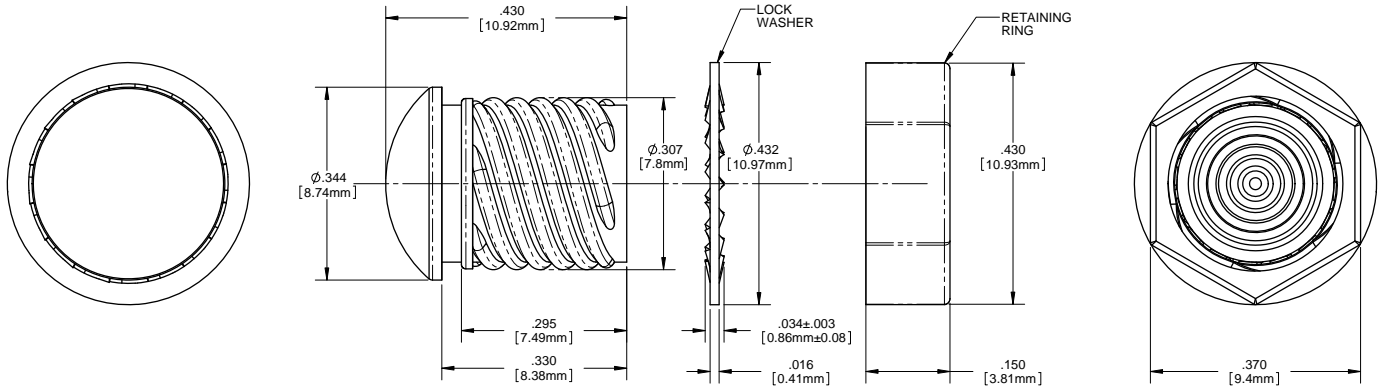
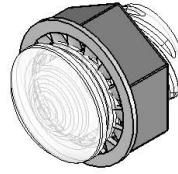
For any questions, you can email us directly:

sales@integrated-circuit.com



- NOTES:
1. MOUNTING: Mounts in a $\phi .312 \pm .002$ [$\phi 7.92\text{mm} \pm .05$] panel hole on .500 [12.7mm] centers. Panel thickness .031 [.8mm] to .125 [3.18mm]. Panel hole should be deburred, but not chamfered.
 2. ASSEMBLY: Insert lens through panel hole, slide lock washer onto lens barrel and twist on retaining ring. PCB mounted LEDs slide into lens when the panel cover is closed or the PCB card is inserted into the case.
 3. MATERIAL: Lens-Polycarbonate, UL 94-V2
Lock Washer- FH Steel, Nickel plate
Retaining ring - Thermoplastic, U.L. 94 V0 Rated
 4. U.S. & Foreign Pat. Issued & Pend.

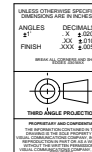
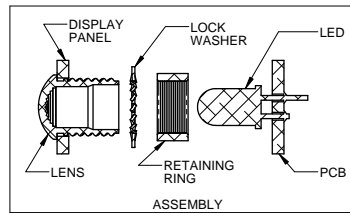
REVISIONS				
ECN#	REV.	DESCRIPTION	DATE	INITIALS
	001	REVISED PER ECR111009AZ01	4-23-10	SMU



ORDERING CODE : **CMC 441 XXX**

MODEL

LENS COLOR	
RTP	RED TRANSPARENT
ATP	AMBER TRANSPARENT
GTP	GREEN TRANSPARENT
BTP	BLUE TRANSPARENT
YTP	YELLOW TRANSPARENT
CTP	CLEAR TRANSPARENT



MATERIAL	
SEE NOTES	
FINISH	
SEE NOTES	
APPROVAL	DATE
SMU	4-23-10
DRAWN	CHECKED
DZ	DZ
DO NOT SCALE DRAWING	

VISUAL COMMUNICATIONS COMPANY, INC.			
190 Bostwick Boulevard, Suite 101 San Marcos, CA 92069 USA Phone (760) 560-1300 Fax (760) 560-1301 email vccsales@vccs.com			
TITLE: 5MM ROUND STANDARD THREADED FRESNEL LENS			
SIZE	DWG. NO.	REV	
B	CMC 441 XXX	001	
SCALE: 4:1		SHEET 1 OF 1	