

## Excellent Integrated System Limited

Stocking Distributor

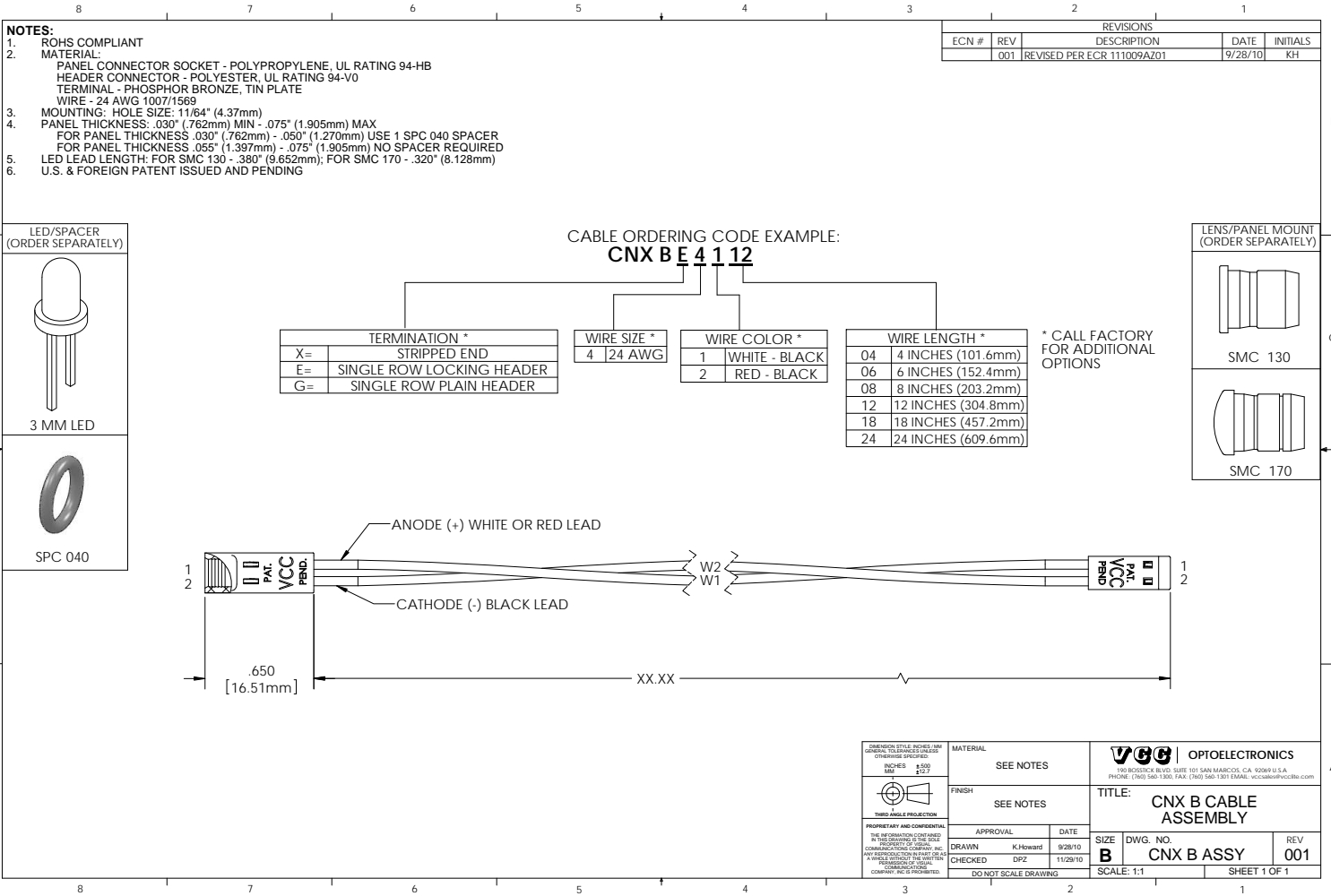
Click to view price, real time Inventory, Delivery & Lifecycle Information:

[Visual Communications Company, LLC](#)

[CNX\\_B\\_E\\_4\\_1\\_04](#)

For any questions, you can email us directly:

[sales@integrated-circuit.com](mailto:sales@integrated-circuit.com)



- NOTES:**
1. ROHS COMPLIANT
  2. MATERIAL:  
 PANEL CONNECTOR SOCKET - POLYPROPYLENE, UL RATING 94-HB  
 HEADER CONNECTOR - POLYESTER, UL RATING 94-V0  
 TERMINAL - PHOSPHOR BRONZE, TIN PLATE  
 WIRE - 24 AWG 1007/1569
  3. MOUNTING: HOLE SIZE: .1164" (4.37mm)
  4. PANEL THICKNESS: .030" (.762mm) MIN - .075" (1.905mm) MAX  
 FOR PANEL THICKNESS .030" (.762mm) - .050" (1.270mm) USE 1 SPC 040 SPACER  
 FOR PANEL THICKNESS .050" (1.397mm) - .075" (1.905mm) NO SPACER REQUIRED
  5. LED LEAD LENGTH: FOR SMC 130 - .390" (9.652mm); FOR SMC 170 - .320" (8.128mm)
  6. U.S. & FOREIGN PATENT ISSUED AND PENDING

REVISIONS				
ECN #	REV	DESCRIPTION	DATE	INITIALS
	001	REVISED PER ECR 111009AZ01	9/28/10	KH

CABLE ORDERING CODE EXAMPLE:  
**CNX B E 4 1 12**

TERMINATION *	
X=	STRIPPED END
E=	SINGLE ROW LOCKING HEADER
G=	SINGLE ROW PLAIN HEADER

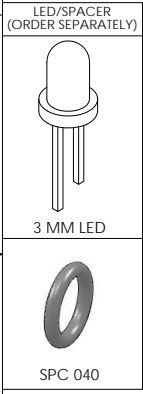
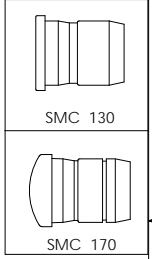
WIRE SIZE *	
4	24 AWG

WIRE COLOR *	
1	WHITE - BLACK
2	RED - BLACK

WIRE LENGTH *	
04	4 INCHES (101.6mm)
06	6 INCHES (152.4mm)
08	8 INCHES (203.2mm)
12	12 INCHES (304.8mm)
18	18 INCHES (457.2mm)
24	24 INCHES (609.6mm)

\* CALL FACTORY FOR ADDITIONAL OPTIONS

LENS/PANEL MOUNT (ORDER SEPARATELY)



DIMENSION STYLE: INCHES (MM) GENERAL TOLERANCES UNLESS OTHERWISE SPECIFIED: INCHES .500 MM .254 	MATERIAL	VCC OPTOELECTRONICS 190 BLOSSICK BLVD. SUITE 101 SAN MARCOS, CA 92669 U.S.A. PHONE: (760) 569-1300, FAX: (760) 569-1301 EMAIL: vccsales@vccllc.com
	SEE NOTES	
PROPRIETARY AND CONFIDENTIAL THE INFORMATION CONTAINED IN THIS DRAWING IS THE SOLE PROPERTY OF VISUAL COMMUNICATIONS COMPANY, INC. ANY REPRODUCTION OR PARTIAL REPRODUCTION OF THIS DRAWING WITHOUT THE WRITTEN PERMISSION OF VISUAL COMMUNICATIONS COMPANY, INC. IS PROHIBITED.	FINISH	TITLE:
	SEE NOTES	CNX B CABLE ASSEMBLY SIZE B DWG. NO. CNX B ASSY REV 001
APPROVAL DATE DRAWN K Howard 9/28/10 CHECKED DPZ 11/29/10 DO NOT SCALE DRAWING	SCALE: 1:1 SHEET 1 OF 1	