

Excellent Integrated System Limited

Stocking Distributor

Click to view price, real time Inventory, Delivery & Lifecycle Information:

[Molex Connector Corporation](#)
[0732161120](#)

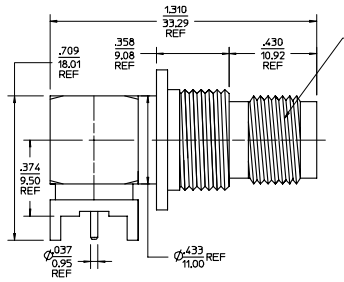
For any questions, you can email us directly:

sales@integrated-circuit.com

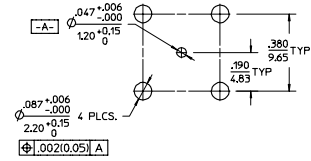
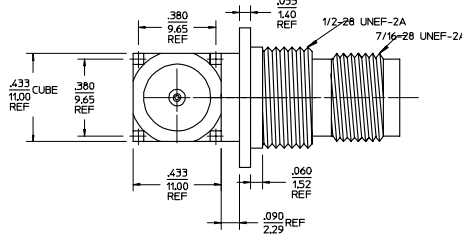
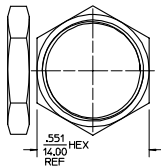
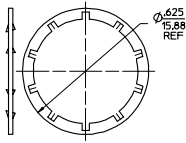
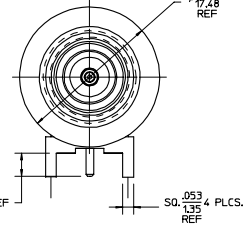
MATERIALS AND FINISHES

MATERIALS:

- BODY, FRONT -- BRASS
PLATED NICKEL
- BODY, BASE -- BRASS
PLATED TIN
- CENTER CONTACT -- BRASS
PLATED GOLD
- INSULATOR -- TEFLON
- COVER -- BRASS
PLATED NICKEL
- RETAINING RING -- BRASS
PLATED NICKEL
- JAM NUT -- BRASS
PLATED NICKEL
- LOCK WASHER -- PHOSPHOR BRONZE
PLATED NICKEL



TNC JACK REVERSE POLARITY



PART # 73216-1120

CHG: PLATING WAS
TIN/LEAD ON BASE
BODY.

EC NO: URF2008-0112
DRAWN: ARBERTSON 2007/08/22
CHKD: 2007/08/22
APPR: WIENER 2007/08/22

QUALITY SYMBOLS
▽⊕
▽⊖

GENERAL TOLERANCES (UNLESS SPECIFIED)	
	INCH
4 PLACES	± .005
3 PLACES	± .004
2 PLACES	± .003
1 PLACE	± .002
ANGULAR ± 1/2°	

DRAWN BY	DATE	TITLE
AZR	2003/05/16	TNC, JACK R/A PCB
CHECKED BY	DATE	REVERSE POLAR 50 OHMS
TEF	2003/06/23	EWR-2063, TNC-J/PCB/RP
APPROVED BY	DATE	
GMH	2003/06/23	

SCALE	DESIGN UNITS	THIRD ANGLE PROJECTION
	INCH	⊕
MATERIAL NO. 732161120		DOCUMENT NO. SD-73216-112
DRAFT WHERE APPLICABLE MUST REMAIN WITHIN DIMENSIONS		SHEET NO. 1 OF 1